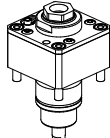
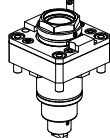
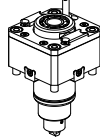
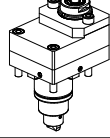
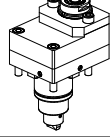
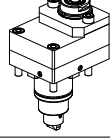
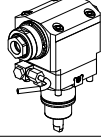
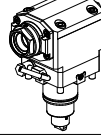
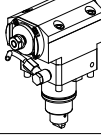
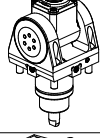
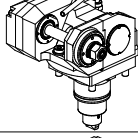
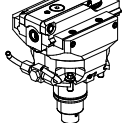
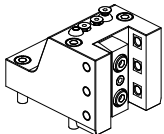
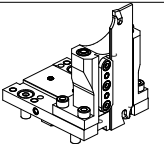
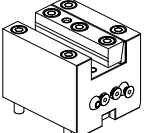
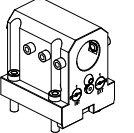
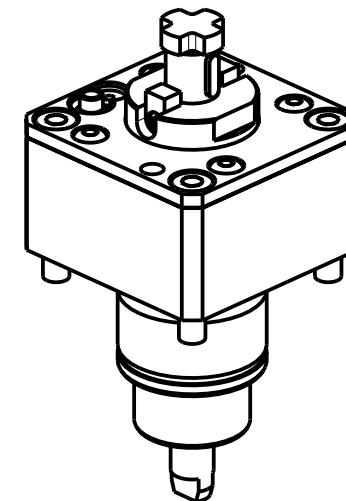
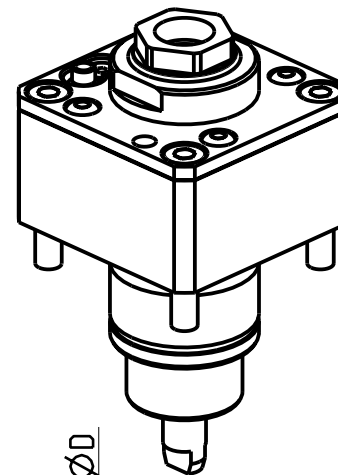
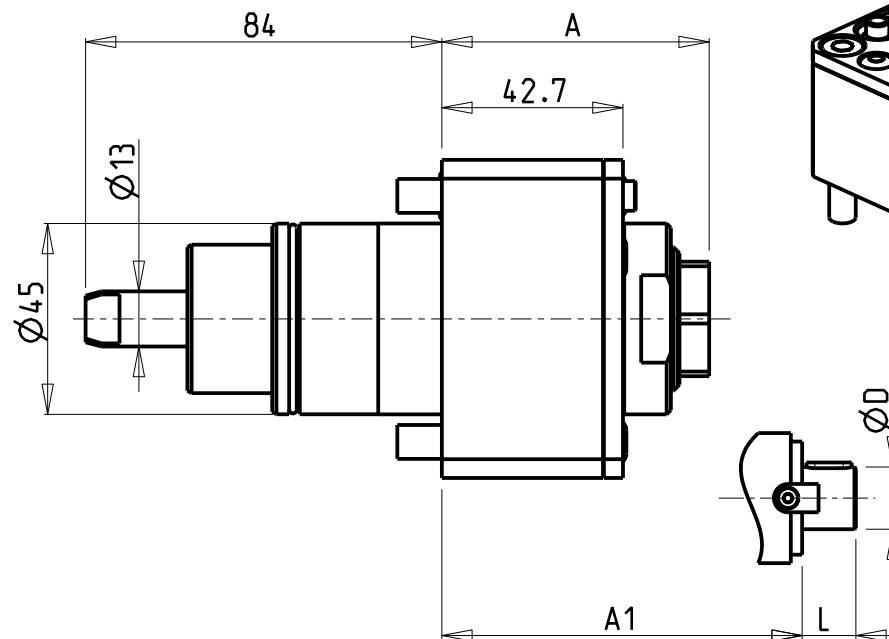
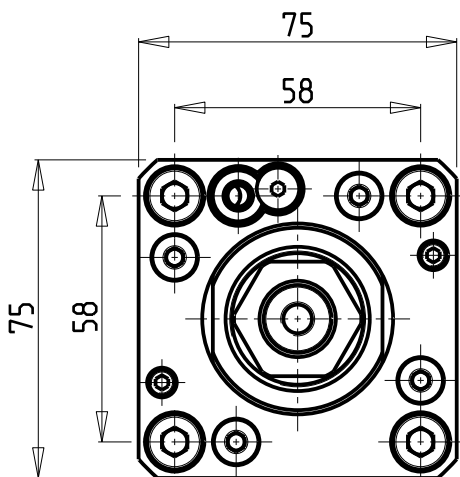


		PAGINA Page Seite
<p><b>MODULO MOTORIZZATO RADIALE</b> Radial driven tool Radial angetriebenes Werkzeug</p>		VCT010.5.00
<p><b>MODULO MOTORIZZATO RADIALE MTSK</b> Radial MTSK driven tool Radial MTSK angetriebenes Werkzeug</p>		VCT010.5.00.K
<p><b>MODULO MOTORIZZATO RADIALE</b> Radial driven tool Radial angetriebenes Werkzeug</p>		VCT010.5.01
<p><b>MODULO MOTORIZZATO RADIALE DISASSATO IN Z 36mm</b> Radial driven tool re-directed in Z by 36mm Radial angetriebenes Werkzeug achsversetzt in Z um 36mm</p>		VCT030.5.10
<p><b>MODULO MOTORIZZATO RADIALE MOLTIPLICATO I=1:2 DISASSATO IN Z 36mm</b> Radial geared-up I=1:2 driven tool re-directed in Z by 36mm Radial angetriebenes Werkzeug uebersetzt I=1:2 achsversetzt in Z um 36mm</p>		VCT030.5.30
<p><b>MODULO MOTORIZZATO RADIALE MOLTIPLICATO I=1:3 DISASSATO IN Z 36mm</b> Radial geared-up I=1:3 driven tool re-directed in Z by 36mm Radial angetriebenes Werkzeug uebersetzt I=1:3 achsversetzt in Z um 36mm</p>		VCT030.5.50
<p><b>MODULO MOTORIZZATO ASSIALE</b> Axial driven tool Axial angetriebenes Werkzeug</p>		VCT150.5.00
<p><b>MODULO MOTORIZZATO ASSIALE MTSK</b> Axial MTSK driven tool Axial MTSK angetriebenes Werkzeug</p>		VCT150.5.00.K
<p><b>MODULO MOTORIZZATO ASSIALE MOLTIPLICATO I=1:2 H=65mm</b> Axial gear-up I=1:2 driven tool H=65mm Axial angetriebenes Werkzeug uebersetzt I=1:2 H=65mm</p>		VCT200.5.10
<p><b>MODULO MOTORIZZATO ORIENTABILE ±90°</b> ±90° adjustable angle driven tool Angetriebenes Werkzeug schwenkbar ±90°</p>		VCT335.5.00
<p><b>MODULO MOTORIZZATO PORTACREATORE</b> Driven gear hobber Angetriebenes Zahnradwaelzfraes-Werkzeug</p>		VCT340.5.20
<p><b>MODULO MOTORIZZATO STOZZATORE CORSA 25mm H=75mm</b> Slotting driven tool 25mm stroke H=75mm Keilnutenstossmaschine 25mm Hub H=75mm</p>		VCT360.5.02

		PAGINA Page Seite
<p><b>PORTAUTENSILE RADIALE SINGOLO QD=20mm / QD=3/4"</b>                      Radial single static tool QD=20mm / QD=3/4"                      Radial Single-Werkzeughalter QD=20mm / QD=3/4"</p>		VCT420.5.00
<p><b>PORTAUTENSILE RADIALE PER LAMA</b>                      Radial blade holder                      Radial Abstechhalter</p>		VCT520.5.10
<p><b>PORTAUTENSILE ASSIALE SINGOLO QD=20mm / QD=3/4"</b>                      Axial single static tool QD=20mm / QD=3/4"                      Axial Single-Werkzeughalter QD=20mm / QD=3/4"</p>		VCT550.5.00
<p><b>PORTAUTENSILE ASSIALE PER BARENO Ø32mm / Ø1 1/4" H=65mm</b>                      Axial single boring bar holder Ø32mm / Ø1 1/4" H=65mm                      Axial Bohrhalter Ø32mm / Ø1 1/4" H=65mm</p>		VCT650.5.10

ATTENZIONE - ATTENTION - ACHTUNG

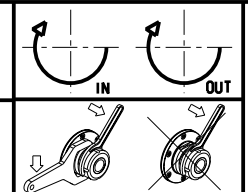
- FINO AD ESAURIMENTO SCORTE
- clearance sale
- solange vorrat



Cod. MT	Mandrino Spindel Spindel	I	RPM	Coppia Max Max Torque Max Drehmoment	Lubrificazione int. Coolant through Innenkuehlung	Lubrificazione est. Ext. coolant Aussenkuehlung	A	A1	D	L	CHIAVI NON INCLUSE Keys not included Schluessel nicht einbegriffen
DW 00110220	ER A 20	1:1	6000	35Nm	P=30bar	X	52.73	-	-	-	CHUB22 CHUB36
DW 00110125	ER A 25	1:1	6000	35Nm	-	X	63.03	-	-	-	CHUB27 CHUB40
DW 00111617	$\varnothing 16 \times 17$	1:1	6000	35Nm	-	X	-	52	16	17	CH_VTCROCE_M08 CHUB36
DW 00111919	$\varnothing 3/4 \times 3/4$	1:1	6000	35Nm	-	X	-	52	3/4"	3/4"	CH_VTCROCE_M08 CHUB36

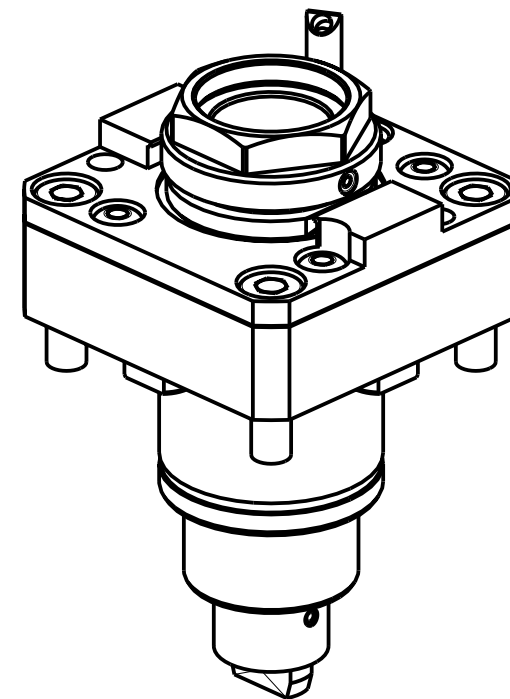
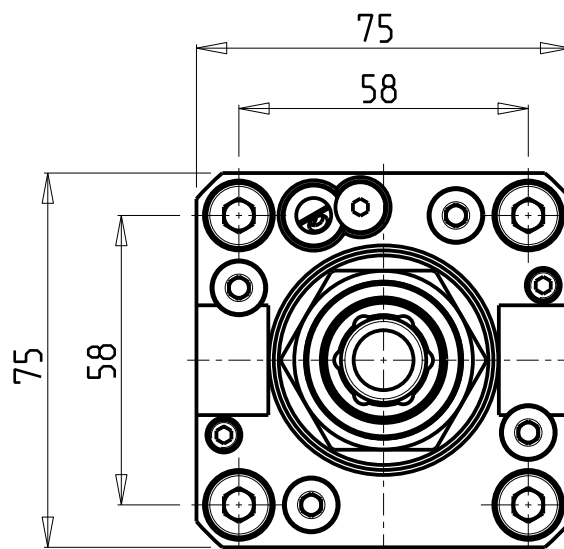
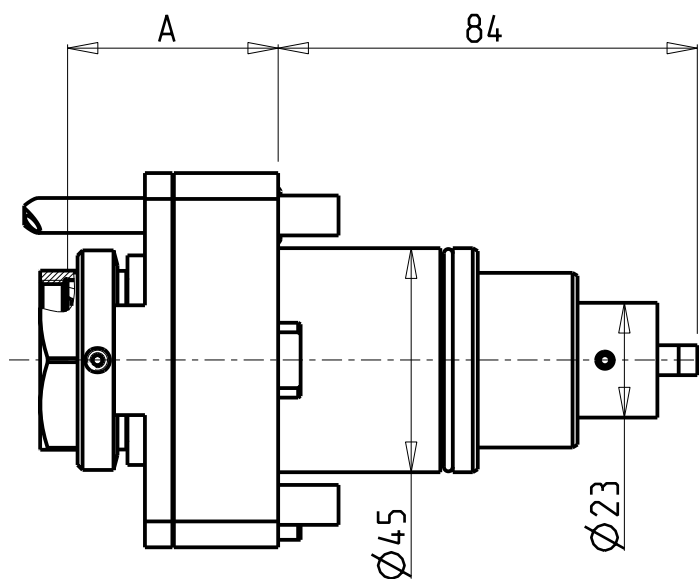
- Chiave inclusa
- Key included
- Schluessel inbegriffen

VICTOR  
 MOD: VTURN-NP16CM  
 MODULO MOTORIZZATO RADIALE  
 Radial driven tool  
 Radial angetriebenes Werkzeug  
 Subject to change without notice.



**M.T. srl**  
 Via Casino Albini 480  
 Tel. 0541/956034-957884  
 Fax 0541/956341  
 47842 S. GIOVANNI IN M. (RN)  
 e-mail: mtma@mtmarchetti.com  
 http://www.mtmarchetti.com

PRODUZIONE MODULI ROTANTI  
  
 PAGINA VCT010-5-00



PER PORTAUTENSILI MODULARI MTSK-32 VEDI PAG. TBL300-1-32  
 FOR MTSK-32 QUIK CHANGE TOOLHOLDERS CLAMPINGS SEE PAGE TBL300-1-32  
 FUER MTSK-32 MODULARE WERKZEUGAUFNAHMEN SIEHE SEITE TBL300-1-32

Cod. MT	Mandrino Spindle Spindel	I	RPM	Coppia Max Max Torque Max Drehmoment	Lubr.interna Coolant through Innenkuehlung	Lubrificazione est. Ext. coolant Aussenkuehlung	A	CHIAVI NON INCLUSE Keys not included Schluessel nicht einbegriffen	
DW 01780132	MTSK-32	1:1	6000	35Nm	-	X	42.2	CHUB36	OKU0290009 *
DW 01780232	MTSK-32	1:1	6000	35Nm	P=30bar	X	49.7	CHUB36	OKU0290009 *

- Chiave inclusa
- Key included
- Schluessel inbegriffen

VICTOR

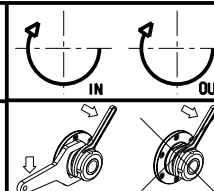
MOD: VTURN-NP16CM

MODULO MOTORIZZATO RADIALE MTSK

Radial MTSK driven tool

Radial MTSK angetriebenes Werkzeug

Subject to change without notice.



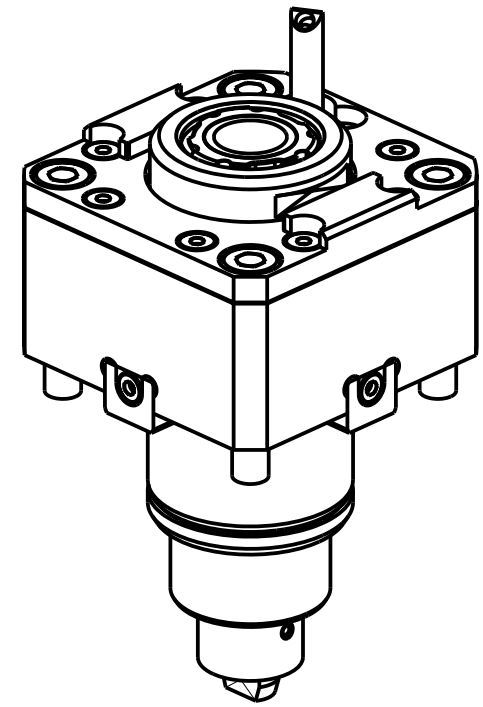
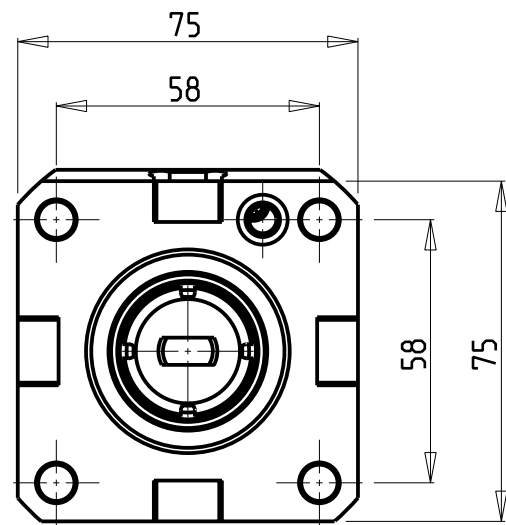
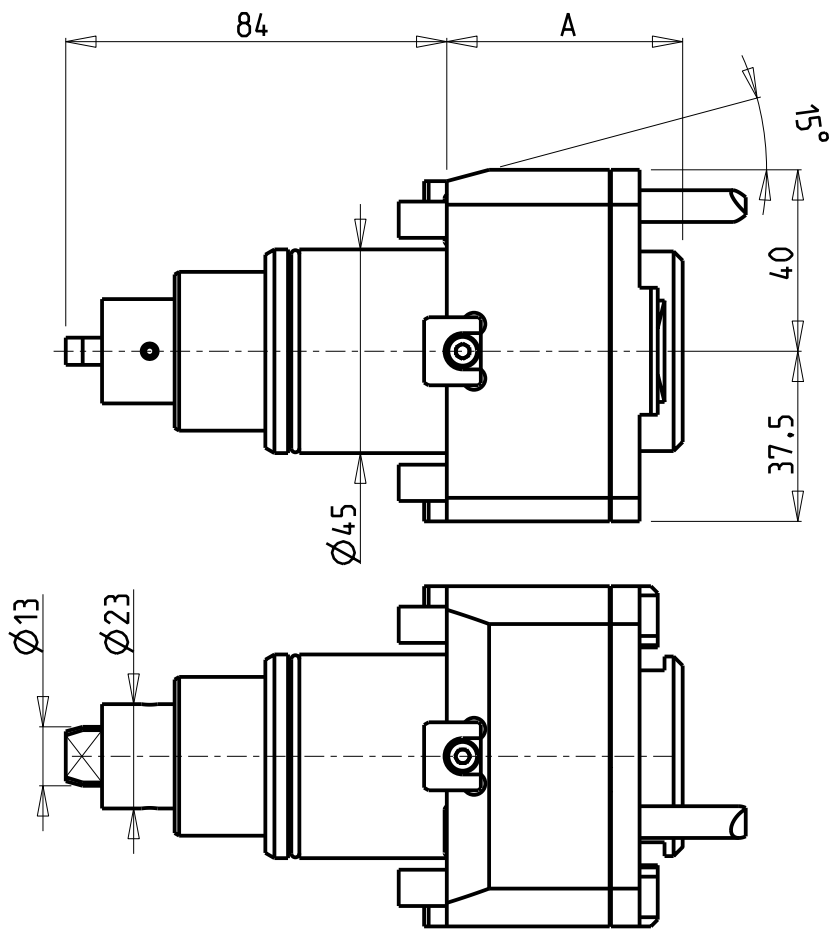
**M.T. srl**

Via Casino Albini 480  
 Tel. 0541/956034-957884  
 Fax 0541/956341  
 47842 S. GIOVANNI IN M. (RN)  
 e-mail: mtma@mtmarchetti.com  
 http://www.mtmarchetti.com

PRODUZIONE MODULI ROTANTI



PAGINA VCT010-5-00-K



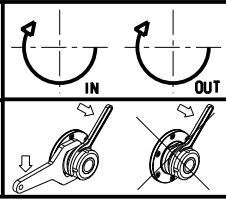
Cod. MT	Mandrino Spindle Spindel	I	RPM	Coppia Max Max Torque Max Drehmoment	Lubrificazione int. Coolant through Innenkuehlung	Lubrificazione est. Ext. coolant Aussenkuehlung	A	CHIAVI NON INCLUSE Keys not included Schlüssel nicht inbegriffen		
DW 02000325	ERA25	1:1	6000	35Nm	-	X	52	CHUB27	CHTAER25ZC	OKU0290009
DW 02000425	ERA25	1:1	6000	35Nm	P=30bar	X	60	CHUB27	CHTAER25ZC	OKU0290009

- Chiave inclusa
- Key included
- Schlüssel inbegriffen

VICTOR  
MOD: VTURN-NP16CM

MODULO MOTORIZZATO RADIALE  
Radial driven tool  
Radial angetriebenes Werkzeug

Subject to change without notice.

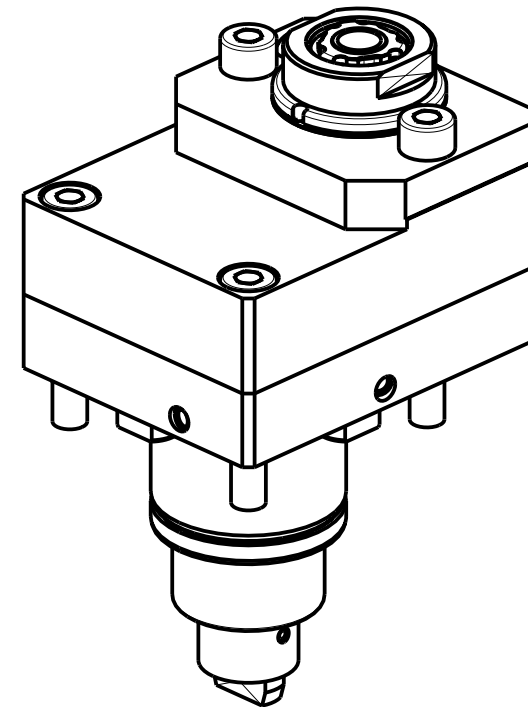
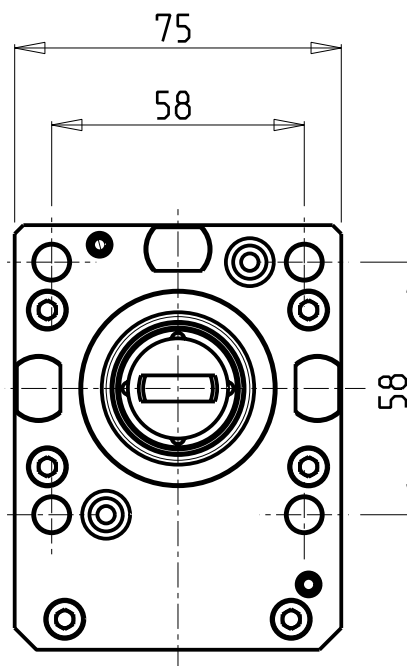
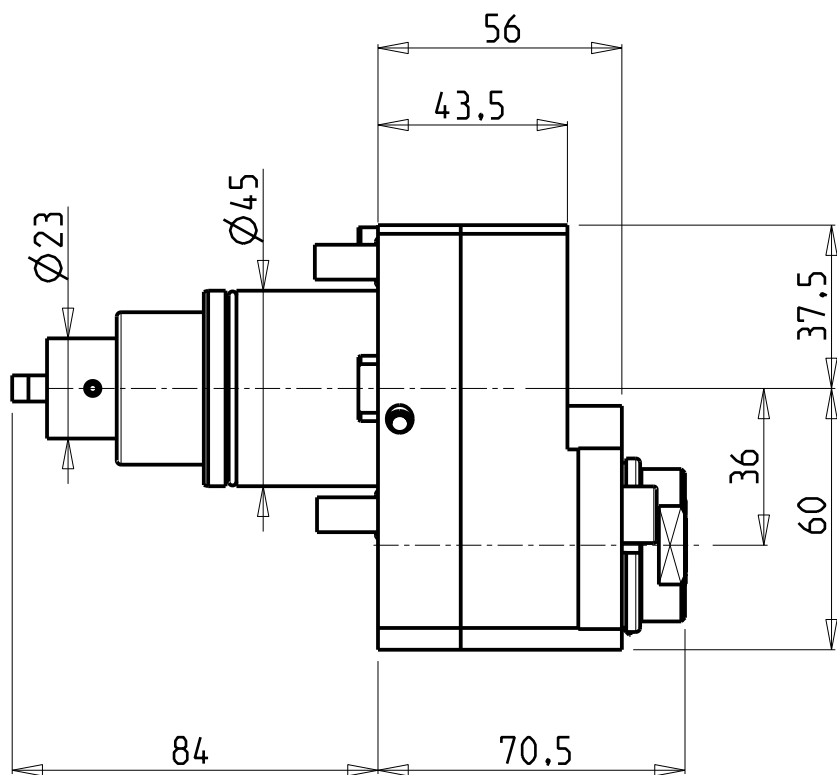


**M.T. srl**  
Via Casino Albini 480  
Tel. 0541/956034-957884  
Fax 0541/956341  
47842 S. GIOVANNI IN M. (RN)  
e-mail: mtma@mtmarchetti.com  
http://www.mtmarchetti.com

PRODUZIONE MODULI ROTANTI



PAGINA VCT010-5-01



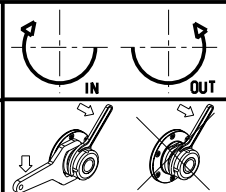
- Chiave inclusa
- Key included
- Schluessel inbegriffen

Cod. MT	Mandrino Spindle Spindel	I	RPM	Coppia Max Max Torque Max Drehmoment	Reversibile lato mandrino/contromandrino Reversible sub/main spindle side Umkehrbare Spindel-seite/ Gegenspindel-seite	Lubrificazione int. Coolant through Innenkuehlung	Lubrificazione est. Ext. coolant Aussenkuehlung	CHIAVI NON INCLUSE Keys not included Schluessel nicht einbegriffen		
								C HUB30	C HUB19_SP3	C HTAER16ZC
DW 01890316	ERA16	1:1	6000	25Nm	X	-	X	C HUB30	C HUB19_SP3	C HTAER16ZC
DW 01890416	ERA16	1:1	6000	25Nm	X	P=70bar	X	C HUB30	C HUB19_SP3	C HTAER16ZC

VICTOR  
MOD: VTURN-NP16CM

MODULO MOTORIZZATO RADIALE DISASSATO IN Z 36mm  
Radial driven tool re-directed in Z by 36mm  
Radial angetriebenes Werkzeug achsversetzt in Z um 36mm

Subject to change without notice.

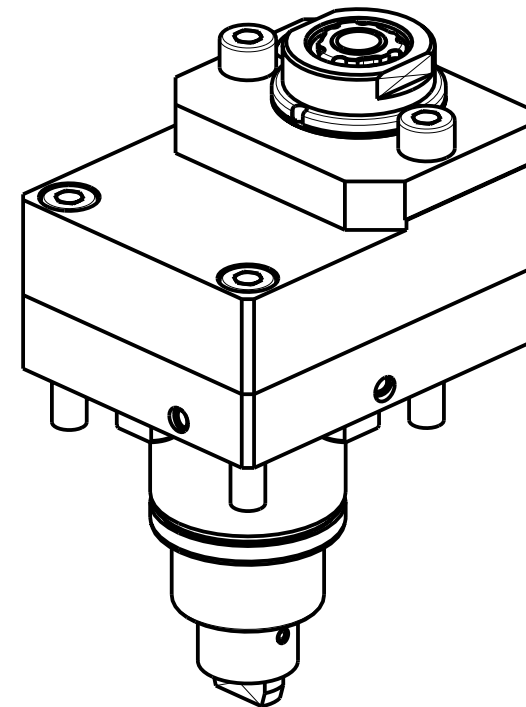
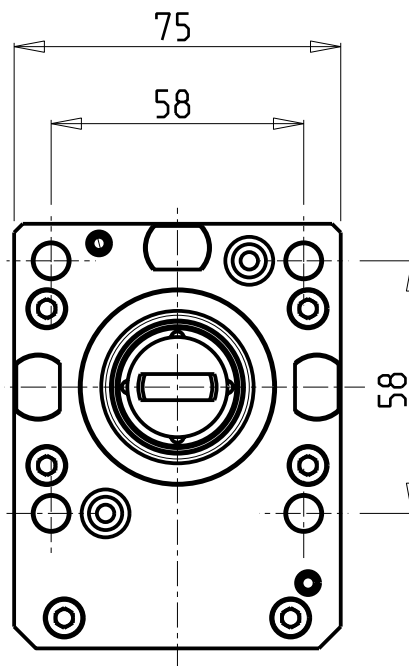
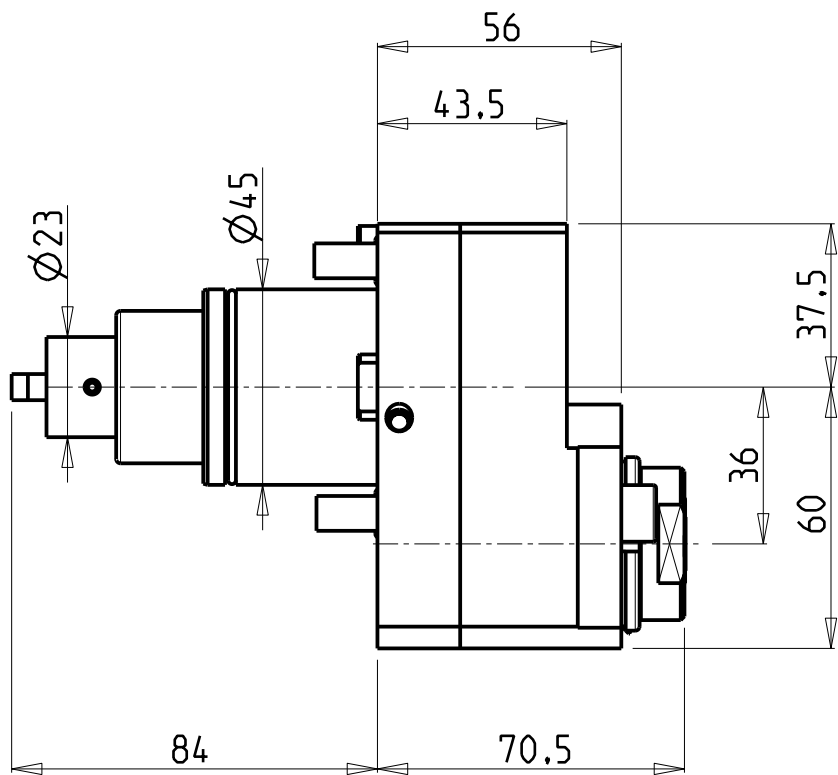


**M.T. srl**  
Via Casino Albini 480  
Tel. 0541/956034-957884  
Fax 0541/956341  
47842 S. GIOVANNI IN M. (RN)  
e-mail: mtma@mtmarchetti.com  
http://www.mtmarchetti.com

PRODUZIONE MODULI ROTANTI



PAGINA VCT030-5-10

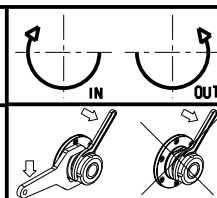


- Chiave inclusa
- Key included
- Schlüssel inbegriffen

Cod. MT	Mandrino Spindle Spindel	I	RPM	Coppia Max Max Torque Max Drehmoment	Reversibile lato mandrino/contromandrino Reversible sub/main spindle side Umkehrbare Spindel-seite/ Gegenspindel-seite	Lubrificazione int. Coolant through Innenkuehlung	Lubrificazione est. Ext. coolant Aussenkuehlung	CHIAVI NON INCLUSE Keys not included Schlüssel nicht einbegriffen		
								C HUB30	C HUB19_SP3	C HTAER16ZC
DW 01891316	ERA16	1:2	12000	15Nm	X	-	X	C HUB30	C HUB19_SP3	C HTAER16ZC
DW 01891416	ERA16	1:2	12000	15Nm	X	P=70bar	X	C HUB30	C HUB19_SP3	C HTAER16ZC

VICTOR  
MOD: VTURN-NP16CM

MODULO MOTORIZZATO RADIALE MOLTIPLICATO I=1:2 DISASSATO IN Z 36mm  
Radial geared-up I=1:2 driven tool re-directed in Z by 36mm  
Radial angetriebenes Werkzeug uebersetzt I=1:2 achsversetzt in Z um 36mm



**M.T. srl**  
Via Casino Albini 480  
Tel. 0541/956034-957884  
Fax 0541/956341  
47842 S. GIOVANNI IN M. (RN)  
e-mail: mtma@mtmarchetti.com  
<http://www.mtmarchetti.com>

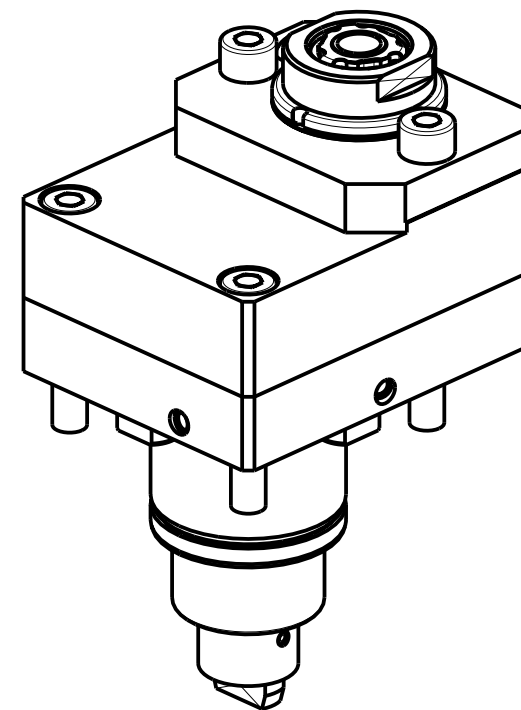
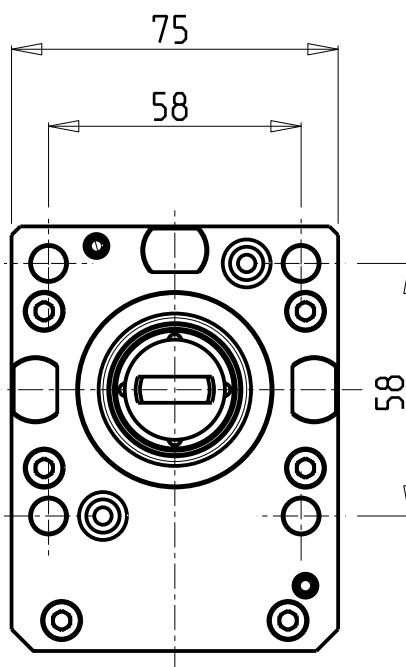
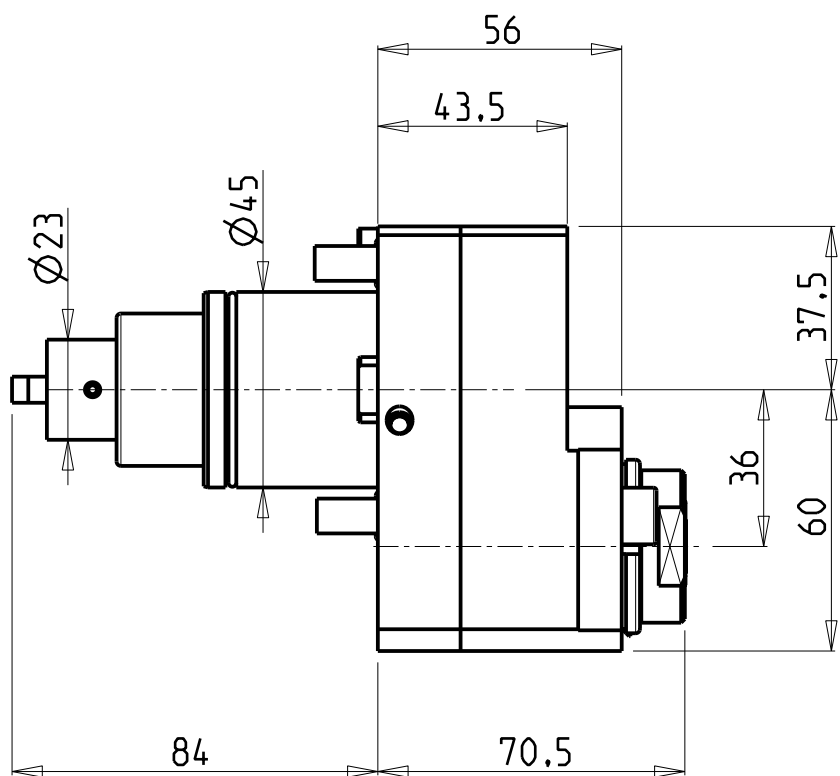
PRODUZIONE MODULI ROTANTI



PAGINA VCT030-5-30

Subject to change without notice.

10/2018



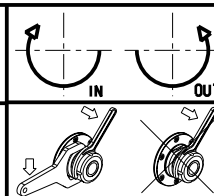
- Chiave inclusa
- Key included
- Schuessel inbegriffen

Cod. MT	Mandrino Spindle Spindel	I	RPM	Coppia Max Max Torque Max Drehmoment	Reversibile lato mandrino/contromandrino Reversible sub/main spindle side Umkehrbare Spindel-seite/ Gegenspindel-seite	Lubrificazione int. Coolant through Innenkuehlung	Lubrificazione est. Ext. coolant Aussenkuehlung	CHIAVI NON INCLUSE Keys not included Schluessel nicht einbegriffen		
								C HUB30	C HUB19_SP3	C HTAER16ZC
DW 01892316	ERA16	1:3	18000	10Nm	X	-	X	C HUB30	C HUB19_SP3	C HTAER16ZC
DW 01892416	ERA16	1:3	18000	10Nm	X	P=70bar	X	C HUB30	C HUB19_SP3	C HTAER16ZC

VICTOR  
MOD: VTURN-NP16CM

MODULO MOTORIZZATO RADIALE MOLTIPLICATO I=1:3 DISASSATO IN Z 36mm  
Radial geared-up I=1:3 driven tool re-directed in Z by 36mm  
Radial angetriebenes Werkzeug uebersetzt I=1:3 achsversetzt in Z um 36mm

Subject to change without notice.



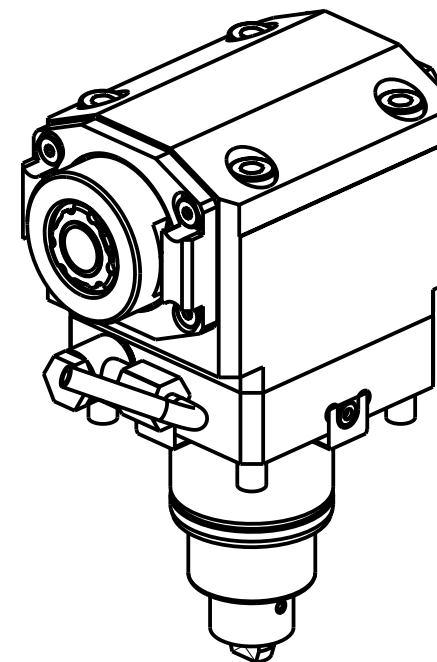
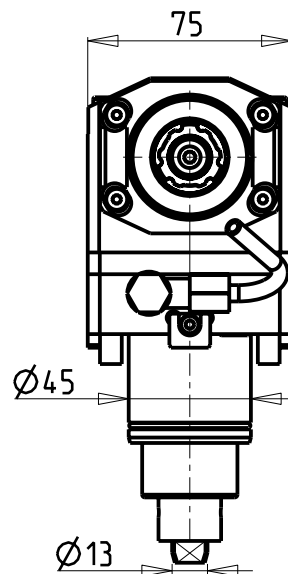
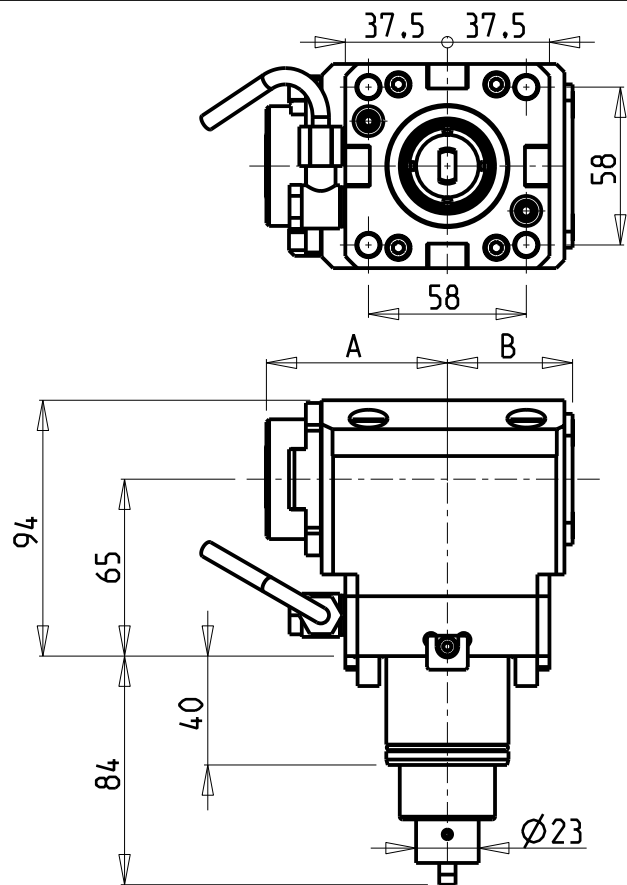
**M.T. srl**  
Via Casino Albini 480  
Tel. 0541/956034-957884  
Fax 0541/956341  
47842 S. GIOVANNI IN M. (RN)  
e-mail: mtma@mtmarchetti.com  
http://www.mtmarchetti.com

PRODUZIONE MODULI ROTANTI



PAGINA VCT030-5-50

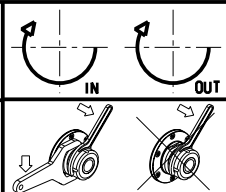





- Chiave inclusa
- Key included
- Schlüssel inbegriffen

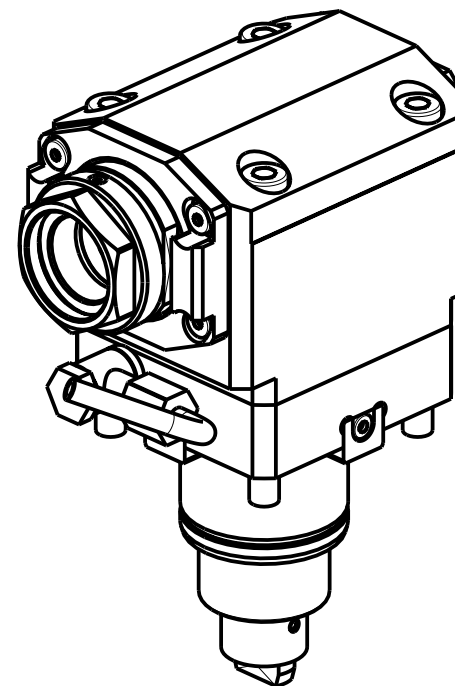
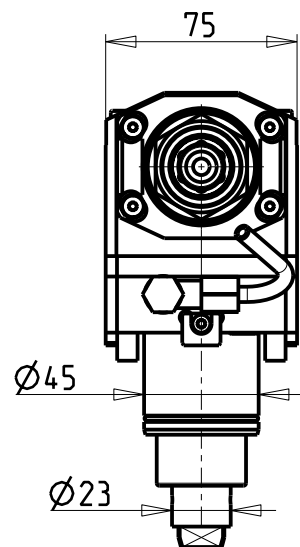
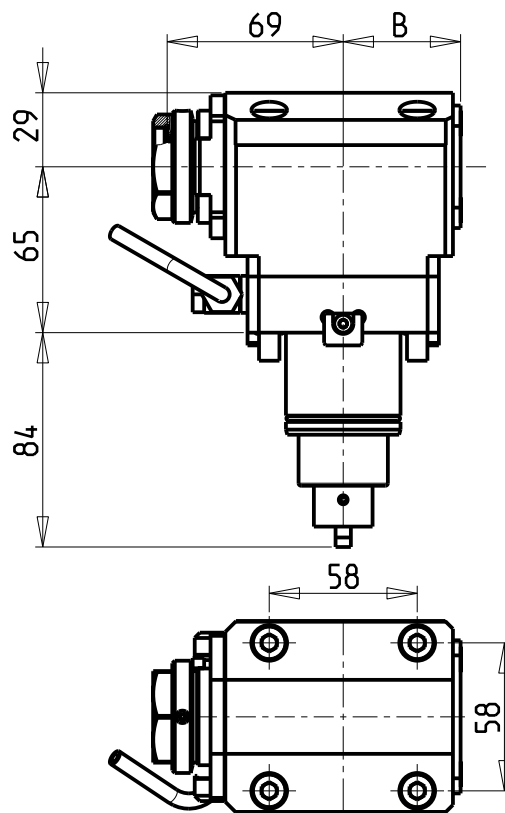
Cod. MT	Mandrino Spindle Spindel	I	RPM	Coppia Max Max Torque Max Drehmoment	Reversibile lato mandrino/contromandrino Reversible sub/main spindle side Umkehrbare Spindel-seite/ Gegenspindel-seite	Lubrificazione int. Coolant through Innenkuehlung	Lubrificazione est. Ext. coolant Aussenkuehlung	A	B	CHIAVI NON INCLUSE Keys not included Schlüssel nicht inbegriffen		
DW 02290320	ERA20	1:1	6000	35Nm	X	-	X	66,5	46	CHUB22	CHTAER20ZC	OKU0290009
DW 02290420	ERA20	1:1	6000	35Nm	X	P=70bar	X	66,5	56	CHUB22	CHTAER20ZC	OKU0290009
DW 02290325	ERA25	1:1	6000	35Nm	X	-	X	70	46	CHUB27	CHTAER25ZC	OKU0290009
DW 02290425	ERA25	1:1	6000	35Nm	X	P=70bar	X	70	56	CHUB27	CHTAER25ZC	OKU0290009

VICTOR  
 MOD: VTURN-NP16CM  
 MODULO MOTORIZZATO ASSIALE  
 Axial driven tool  
 Axial angetriebenes Werkzeug  
 Subject to change without notice.



**M.T. srl**  
 Via Casino Albini 480  
 Tel. 0541/956034-957884  
 Fax 0541/956341  
 47842 S. GIOVANNI IN M. (RN)  
 e-mail: mtma@mtmarchetti.com  
 http://www.mtmarchetti.com

PRODUZIONE MODULI ROTANTI  
  
 PAGINA VCT150-5-00



PER PORTAUTENSILI MODULARI MTSK-32 VEDI PAG. TBL300-1-32  
 FOR MTSK-32 QUICK CHANGE TOOLHOLDERS CLAMPINGS SEE PAGE TBL300-1-32  
 FUER MTSK-32 MODULARE WERKZEUGAUFNAHMEN SIEHE SEITE TBL300-1-32

- Chiave inclusa
- Key included
- Schluessel inbegriffen

Cod. MT	Mandrino Spindel Spindel	I	RPM	Coppia Max Max Torque Max Drehmoment	Reversibile lato mandrino/contromandrino Reversible sub/main spindle side Umkehrbare Spindel-seite/ Gegen-spindel-seite	Lubr.interna Coolant through Innenkuehlung	Lubrificazione est. Ext. coolant Aussenkuehlung	B	CHIAVI NON INCLUSE Keys not included Schluessel nicht einbegriffen	
DW01790132	MTSK-32	1:1	6000	35Nm	X	-	X	46	CHUB36	OKU0290009 ▪
DW01790232	MTSK-32	1:1	6000	35Nm	X	P=70bar	X	56	CHUB36	OKU0290009 ▪

VICTOR

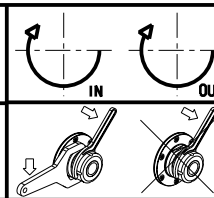
MOD: VTURN-NP16CM

MODULO MOTORIZZATO ASSIALE MTSK

Axial MTSK driven tool

Axial MTSK angetriebenes Werkzeug

Subject to change without notice.



**M.T. srl**

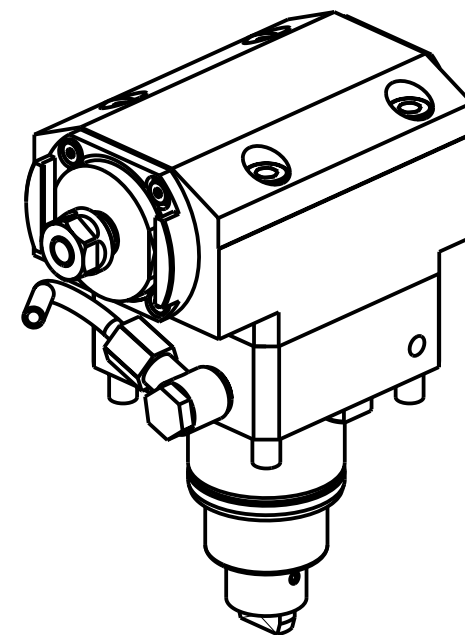
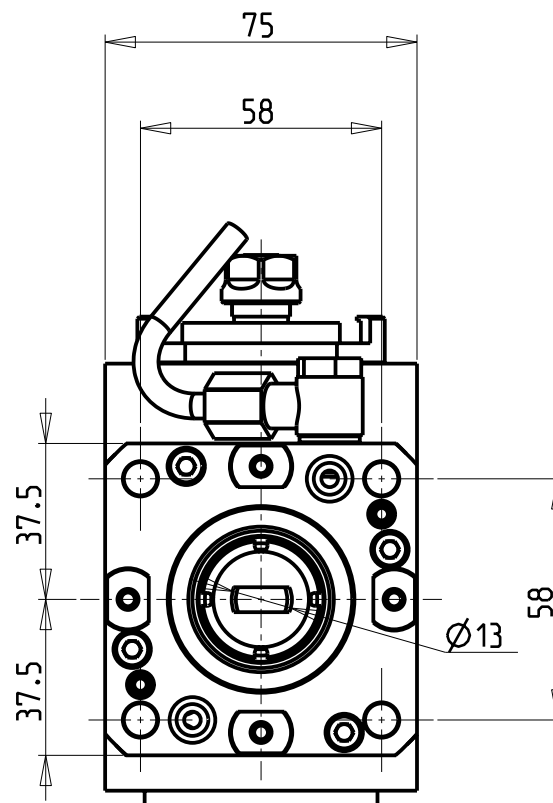
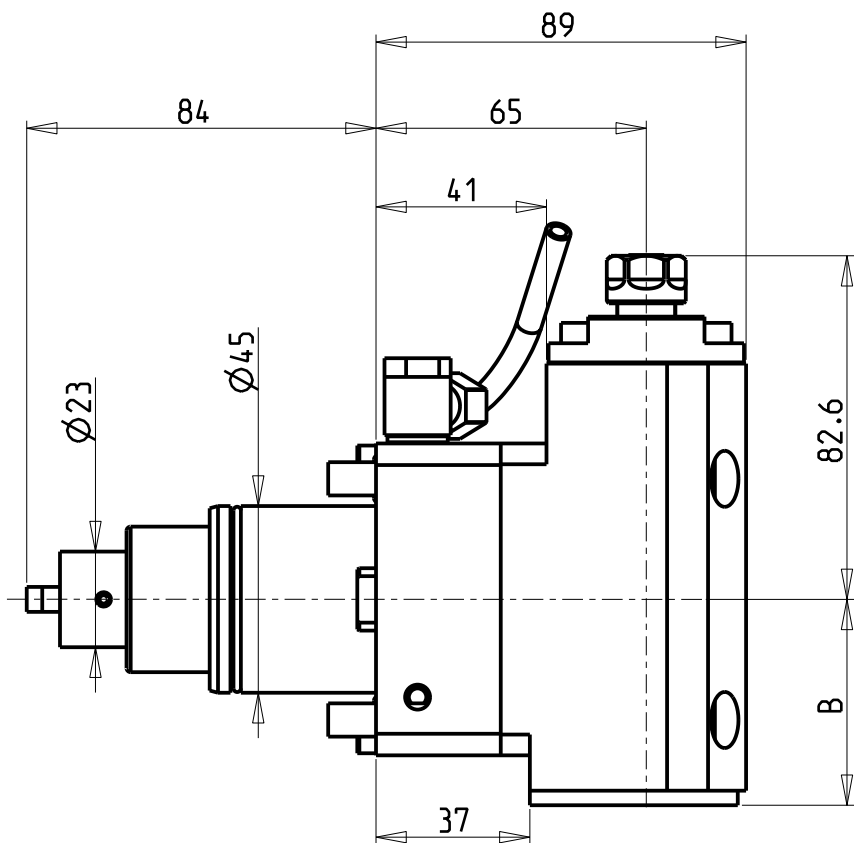
Via Casino Albini 480  
 Tel. 0541/956034-957884  
 Fax 0541/956341

47842 S. GIOVANNI IN M. (RN)  
 e-mail: mtma@mtmarchetti.com  
 http://www.mtmarchetti.com

PRODUZIONE MODULI ROTANTI



PAGINA VCT150-5-00-K



- Chiave inclusa
- Key included
- Schlüssel inbegriffen

Cod. MT	Mandrino Spindle Spindel	I	RPM	Coppia Max Max Torque Max Drehmoment	Reversibile lato mandrino/contromandrino Reversible sub/main spindle side Umkehrbare Spindel-seite/ Gegenspindel-seite	Lubrificazione int. Coolant through Innenkuehlung	Lubrificazione est. Ext. coolant Aussenkuehlung	B	CHIAVI NON INCLUSE Keys not included Schluessel nicht einbegriffen	
DW02320111	ER11	1:2	12000	20Nm	X	-	X	49.5	CHUB17	OKU0290009 ▪
DW02320211	ER11	1:2	12000	20Nm	X	P=70bar	X	57.5	CHUB17	OKU0290009 ▪

VICTOR

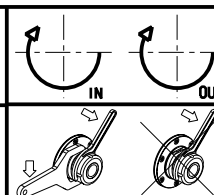
MOD: VTURN-NP16CM

MODULO MOTORIZZATO ASSIALE MOLTIPLICATO I=1:2 H=65mm

Axial gear-driven I=1:2 driven tool H=65mm

Axial angetriebenes Werkzeug uebersetzt I=1:2 H=65mm

Subject to change without notice.



**M.T. srl**

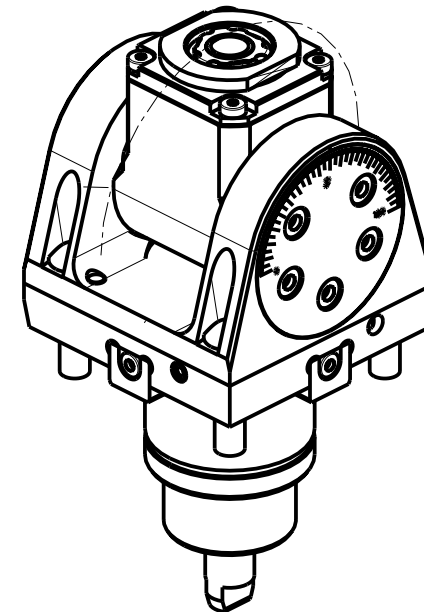
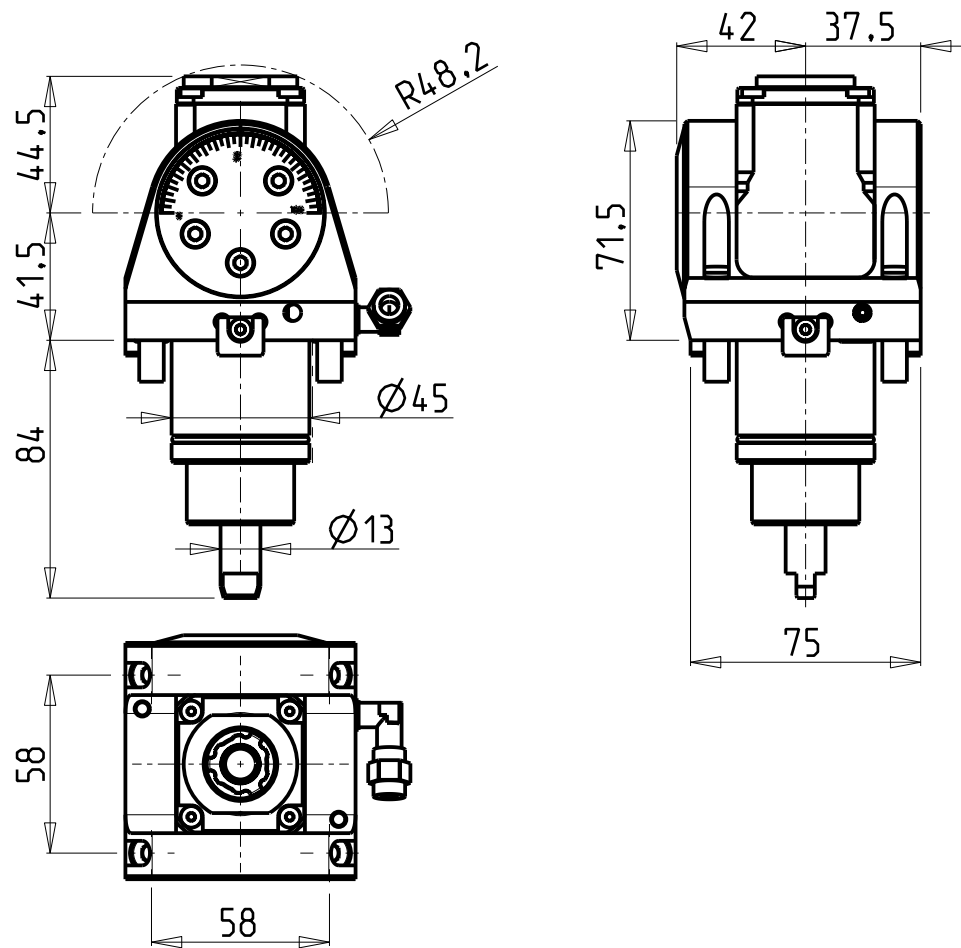
Via Casino Albini 480  
Tel. 0541/956034-957884  
Fax 0541/956341

47842 S. GIOVANNI IN M. (RN)  
e-mail: mtma@mtmarchetti.com  
http://www.mtmarchetti.com

PRODUZIONE MODULI ROTANTI



PAGINA VCT200-5-10



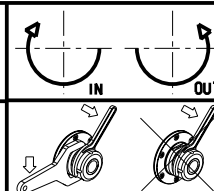
Cod. MT	Mandrino Spindle Spindel	I	RPM	Coppia Max Max Torque Max Drehmoment	Reversibile lato mandrino/contromandrino Reversible sub/main spindle side Umkehrbare Spindel-seite/ Gegenspindel-seite	Lubrificazione est. Ext. coolant Aussenkuehlung	CHIAVI INCLUSE Keys included Schlüssel inbegriffen			
DW00040116	ER A 16	1:1	6000	20Nm	X	X	CHUB19_SP3	CHUB32	CHESL05	CHTAER16ZC

VICTOR

MOD: VTURN-NP16CM

MODULO MOTORIZZATO ORIENTABILE ±90°  
±90° adjustable angle driven tool  
Angetriebenes Werkzeug schwenkbar ±90°

Subject to change without notice.



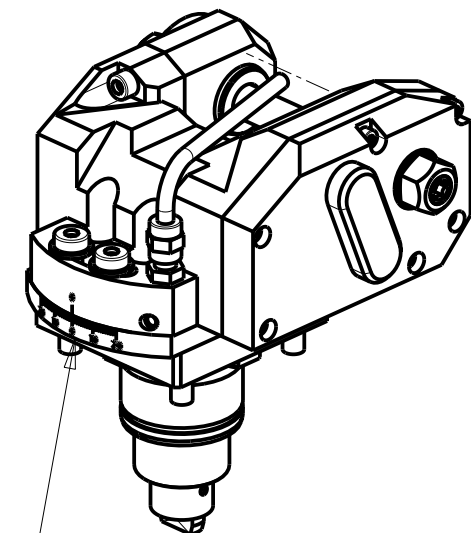
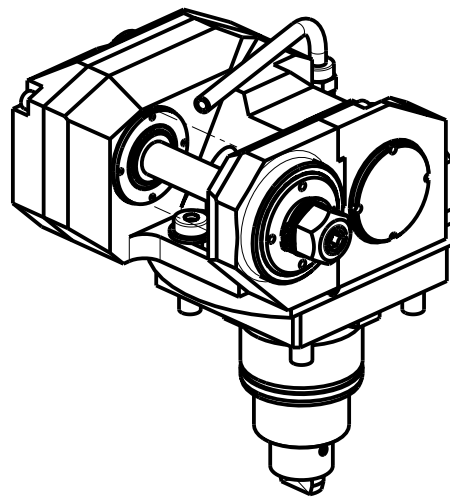
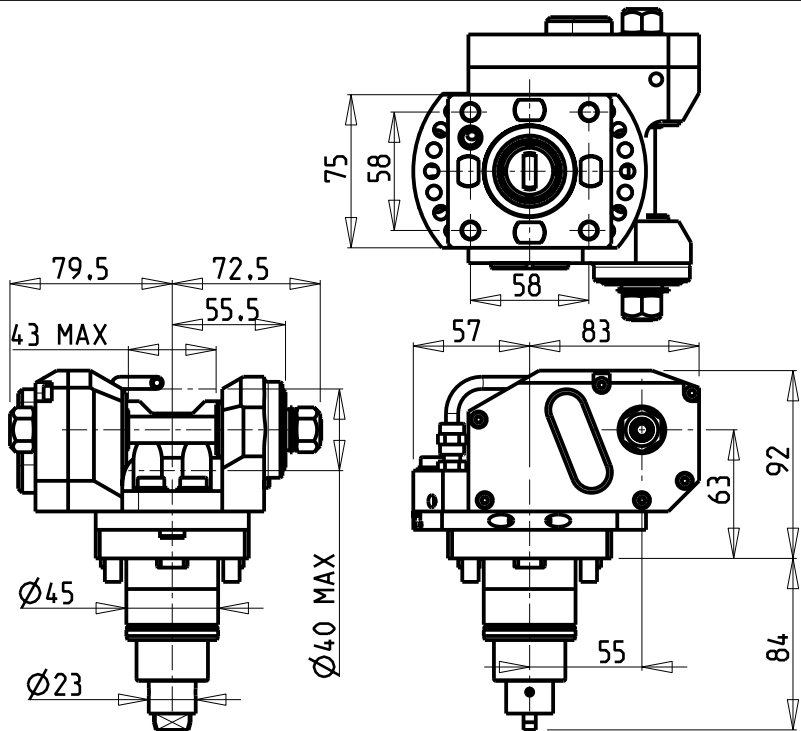
**M.T. srl**

Via Casino Albini 480  
Tel. 0541/956034-957884  
Fax 0541/956341  
47842 S. GIOVANNI IN M. (RN)  
e-mail: mtma@mtmarchetti.com  
http://www.mtmarchetti.com

PRODUZIONE MODULI ROTANTI



PAGINA VCT335-5-00



INCLINAZIONE  
REGOLABILE ±20°

Cod. MT	i	RPM max	Coppia Max Max Torque Max Drehmoment	Lubrificazione est. Ext. coolant Aussenkuehlung	D (mm)	CHIAVI INCLUSE Keys included Schluessel inbegriffen				
DW 01611116	1:1	6000	30Nm	X	16	CHUB19	CHESL06	CHESL05	-	-
DW 01611113	1:1	6000	30Nm	X	13	CHUB19	CHESL06	CHESL05	-	-
DW 01611110	1:1	6000	30Nm	X	10	CHUB19	CHESL06	CHESL05	-	CHUB17
DW 01611108	1:1	6000	30Nm	X	8	CHUB19	CHESL06	CHESL05	CHESL04	CHUB13
DW 01612116	2:1	3000	50Nm	X	16	CHUB19	CHESL06	CHESL05	-	-
DW 01612113	2:1	3000	50Nm	X	13	CHUB19	CHESL06	CHESL05	-	-
DW 01612110	2:1	3000	50Nm	X	10	CHUB19	CHESL06	CHESL05	-	CHUB17
DW 01612108	2:1	3000	50Nm	X	8	CHUB19	CHESL06	CHESL05	CHESL04	CHUB13

VICTOR

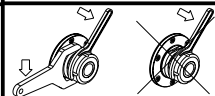
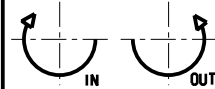
MOD: VTURN-NP16CM

MODULO MOTORIZZATO PORTACREATORE

Driven gear hobber

Angetriebenes Zahnradwaeltzraes-Werkzeug

Subject to change without notice.



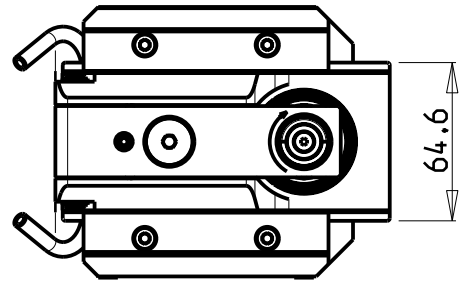
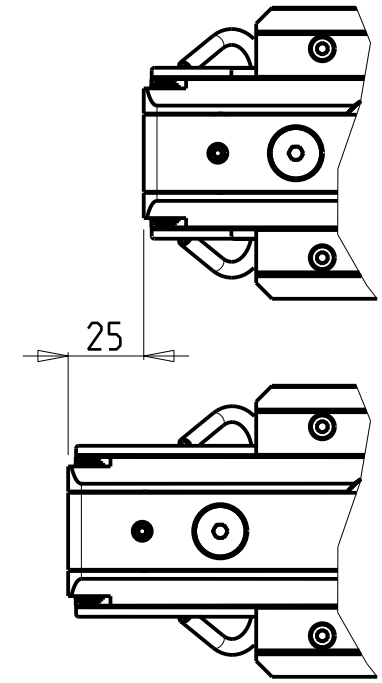
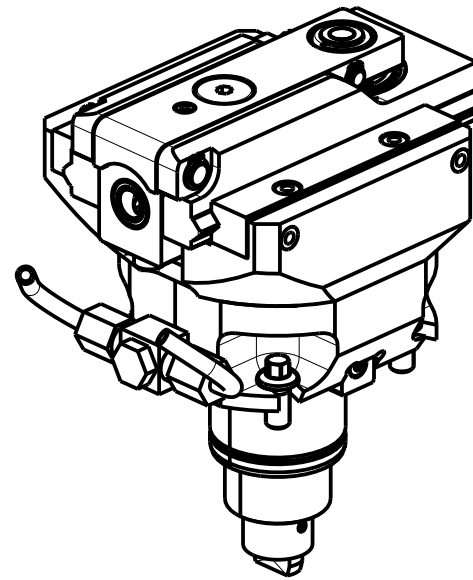
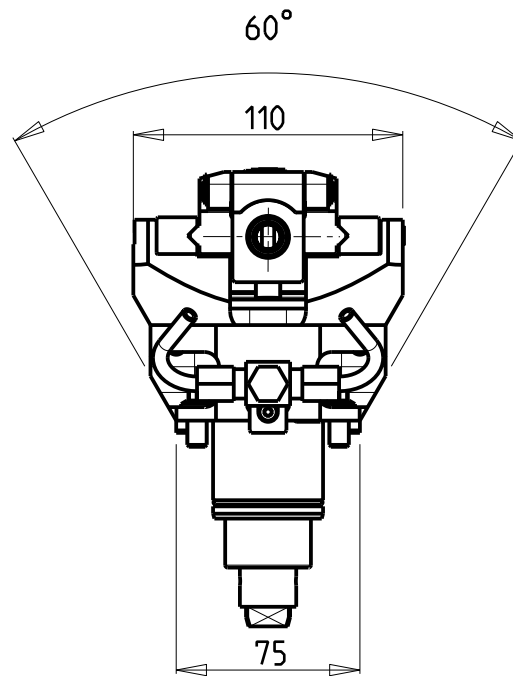
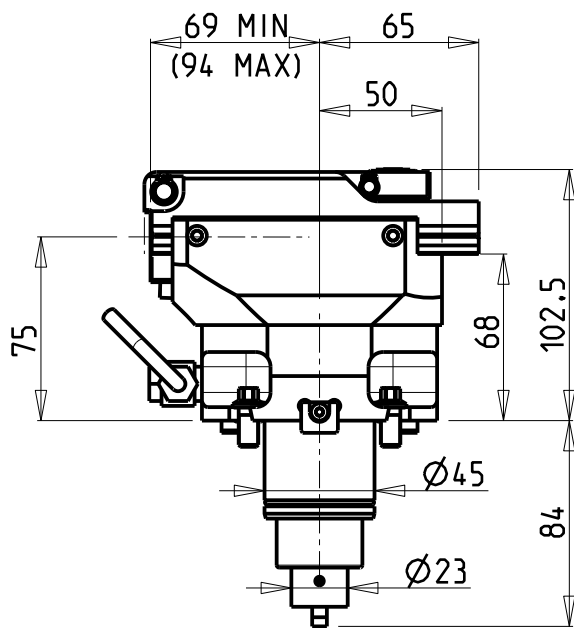
M.T. srl

Via Casino Albini 480  
Tel. 0541/956034-957884  
Fax 0541/956341  
47842 S. GIOVANNI IN M. (RN)  
e-mail: mtma@mtmarchetti.com  
http://www.mtmarchetti.com

PRODUZIONE MODULI ROTANTI



PAGINA VCT340-5-20



PER UTENSILI STOZZATORI VEDI PAG. TBL400-1-00  
 FOR DRIVEN SLOTTING TOOL CUTTING-TOOLS SEE PAGE TBL400-1-00  
 FÜR NUTENSTOSS-WERKZEUG SCHNEIDWERKZEUGE SIEHE SEITE TBL400-1-00


Cod. MT	I	RPM MAX	Reversibile lato mandrino/contromandrino Reversible sub/main spindle side Umkehrbare Spindel-seite/ Gegenspindel-seite	Lubr. esterna Ext. coolant Aussenkuehlung
DW01870200	4:1	2400	X	X

VICTOR  
 MOD: VTURN-NP16CM  
 MODULO MOTORIZZATO STOZZATORE CORSA 25mm H=75mm  
 Slotting driven tool 25mm stroke H=75mm  
 Keilnutenstossmaschine 25mm Hub H=75mm

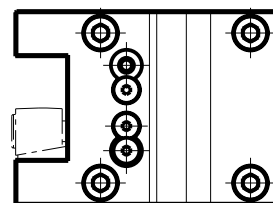
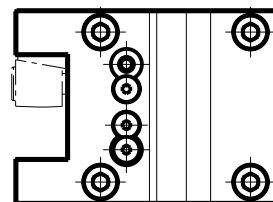
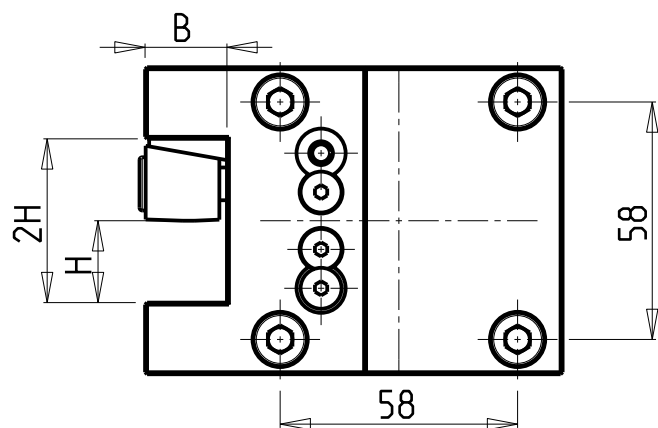
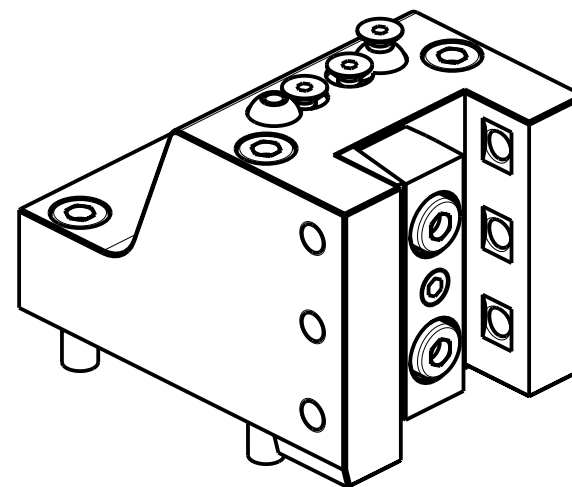
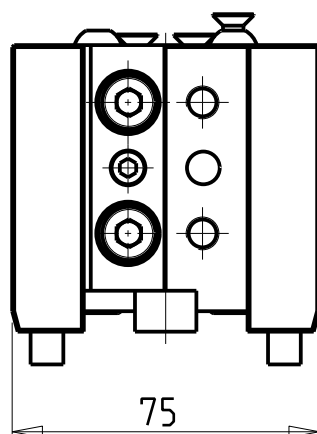
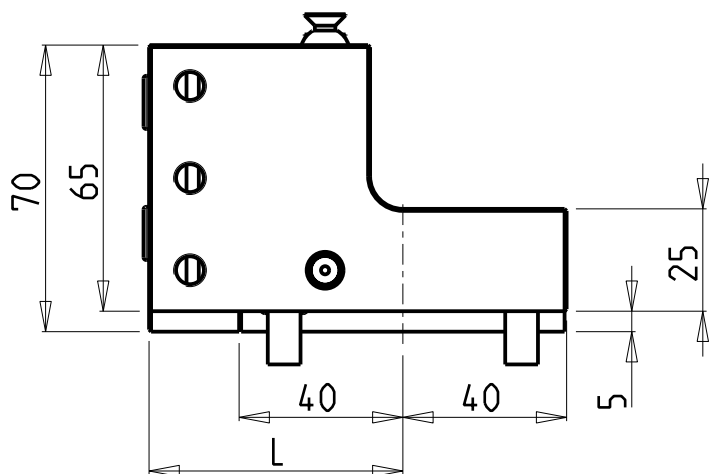
Subject to change without notice.

**M.T. srl**  
 Via Casino Albini 480  
 Tel. 0541/956034-957884  
 Fax 0541/956341  
 47842 S. GIOVANNI IN M. (RN)  
 e-mail: mtma@mtmarchetti.com  
 http://www.mtmarchetti.com

PRODUZIONE MODULI ROTANTI



PAGINA VCT360-5-02



Cod. MT	N°Utensili N°Tools N°Werkzeuge	Misure Dimensions Masse	L	B	H
DW00312000	1/2	mm	62	20	20
DW00312010	1/2	mm	85	20	20
DW00311905	1/2	Inch	62	3/4"	3/4"

VICTOR

MOD: VTURN-NP16CM

PORTAUTENSILE RADIALE SINGOLO QD=20mm / QD=3/4"

Radial single static tool QD=20mm / QD=3/4"

Radial Single-Werkzeughalter QD=20mm / QD=3/4"

Subject to change without notice.

**M.T. srl**

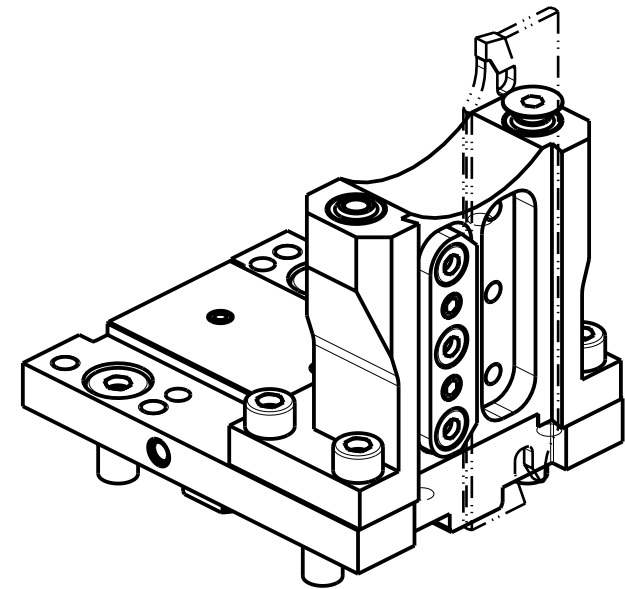
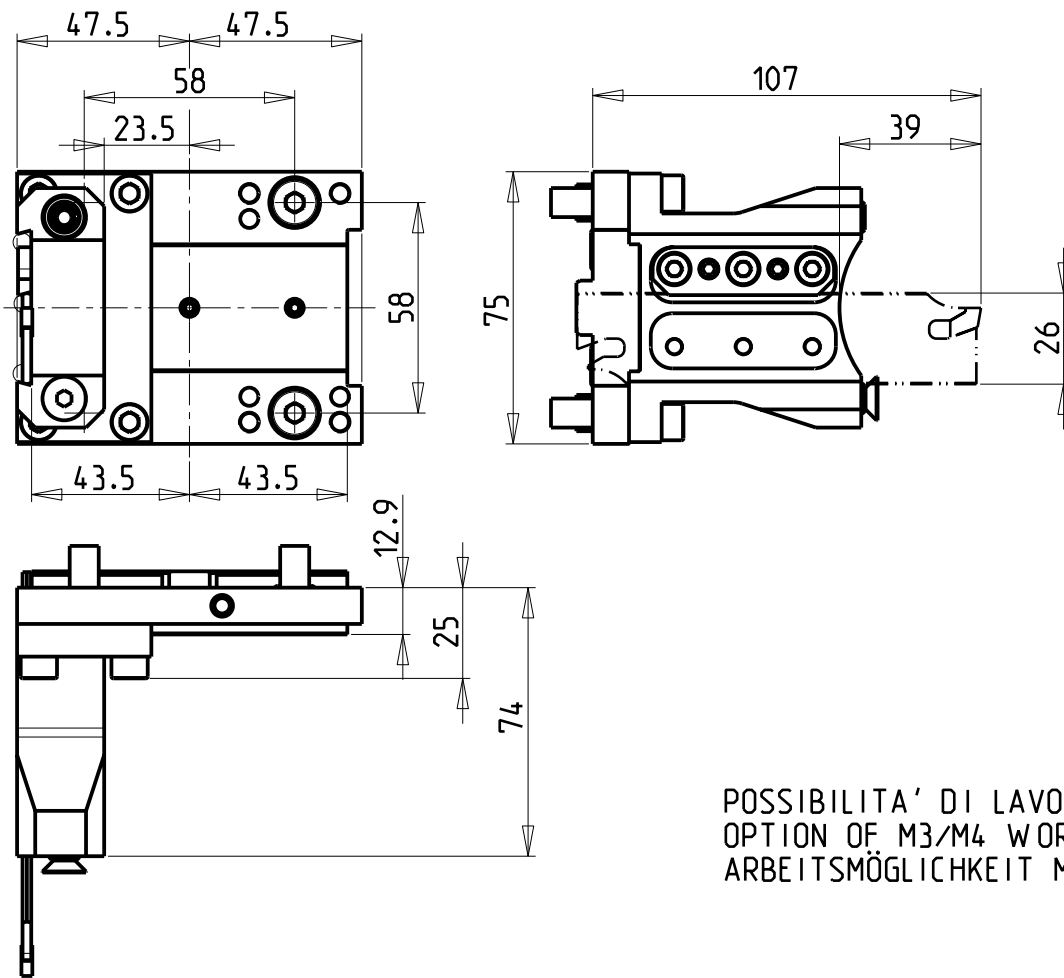
Via Casino Albini 480  
Tel. 0541/956034-957884  
Fax 0541/956341

47842 S. GIOVANNI IN M. (RN)  
e-mail: mtma@mtmarchetti.com  
http://www.mtmarchetti.com

PRODUZIONE MODULI ROTANTI



PAGINA VCT420-5-00



POSSIBILITA' DI LAVORO M3/M4  
 OPTION OF M3/M4 WORKING  
 ARBEITSMÖGLICHKEIT M3/M4

**DOTAZIONI - SUPPLIED WITH - AUSSTATTUNG**

- N°1 - LAMA - BLADE - KLINGE KENNAMETAL H=26 Sp. 3/4mm
- N°10 - INSERTI - INSERTS - EINLAGEN
- N°1 - CHIAVE A T PER MONTAGGIO INSERTI  
 - T-WRENCH FOR INSERT SET UP  
 - T-SCHLUESSEL FUER EINSATZSTUECK-MONTAGE

Cod. MT	N°Utensili N°Tools N°Werkzeuge	Reversibile lato mandrino/contromandrino Reversible sub/main spindle side Umkehrbare Spindelseite/ Gegenspindelseite	Lubr.esterna Ext. coolant Aussenkuehlung
DW 01570126	1	X	X

VICTOR

MOD: VTURN-NP16CM

PORTAUTENSILE RADIALE PER LAMA

Radial blade holder

Radial Abstechhalter

Subject to change without notice.

**M.T. srl**

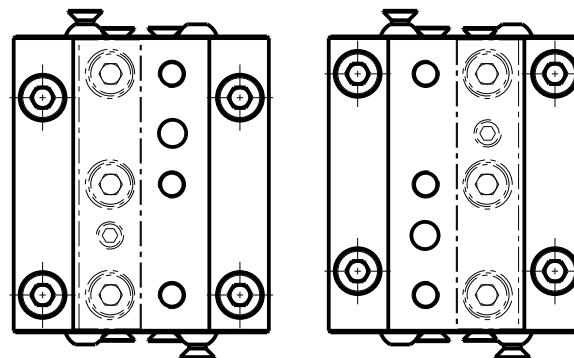
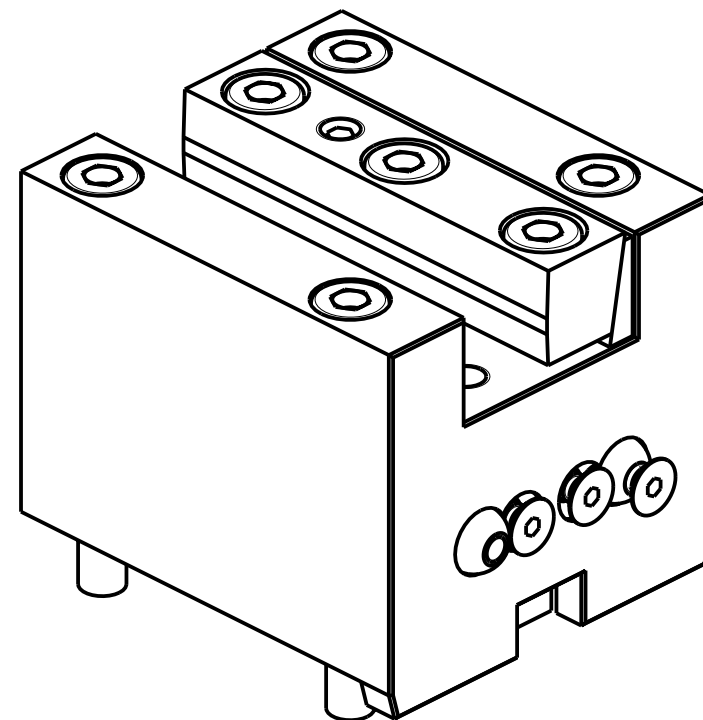
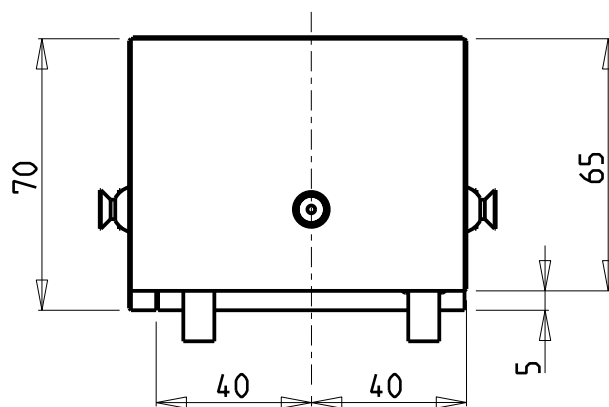
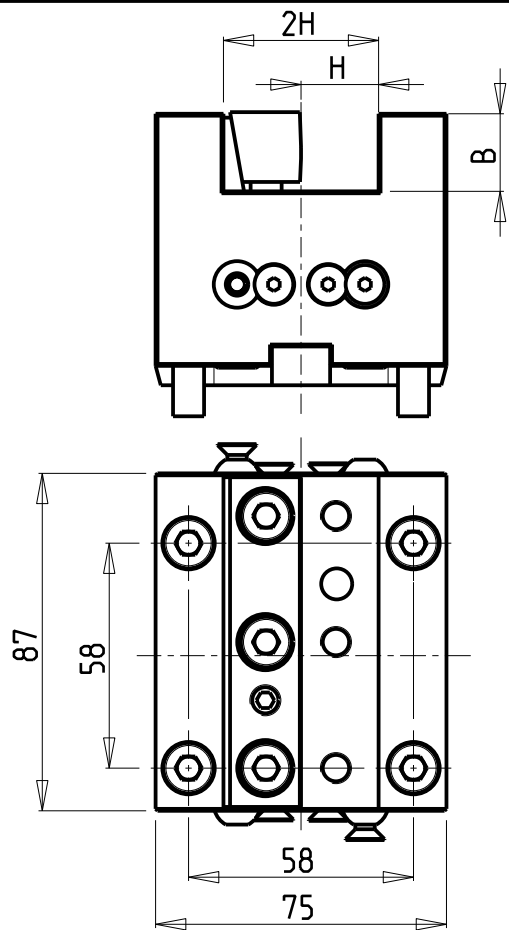
Via Casino Albini 480  
 Tel. 0541/956034-957884  
 Fax 0541/956341  
 47842 S. GIOVANNI IN M. (RN)  
 e-mail: mtma@mtmarchetti.com  
 http://www.mtmarchetti.com

PRODUZIONE MODULI ROTANTI



PAGINA VCT520-5-10





Cod. MT	N°Utensili N°Tools N°Werkzeuge	Misure Dimensions Masse	B	H
DW 00282000	1	mm	20	20
DW 00281905	1	Inch	3/4"	3/4"

VICTOR

MOD: VTURN-NP16CM

PORTAUTENSILE ASSIALE SINGOLO QD=20mm / QD=3/4"

Axial single static tool QD=20mm / QD=3/4"

Axial Single-Werkzeughalter QD=20mm / QD=3/4"

Subject to change without notice.

**M.T. srl**

Via Casino Albini 480  
Tel. 0541/956034-957884  
Fax 0541/956341

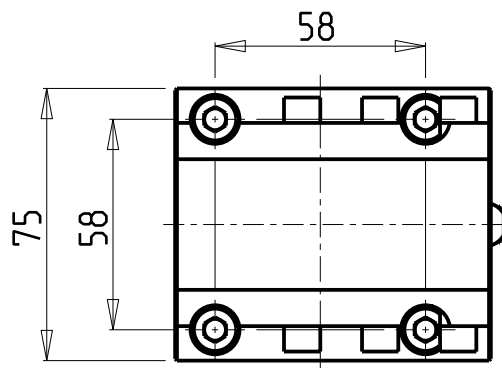
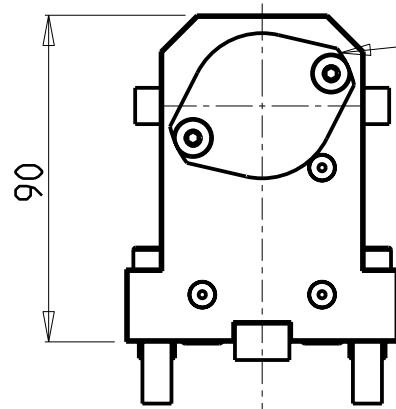
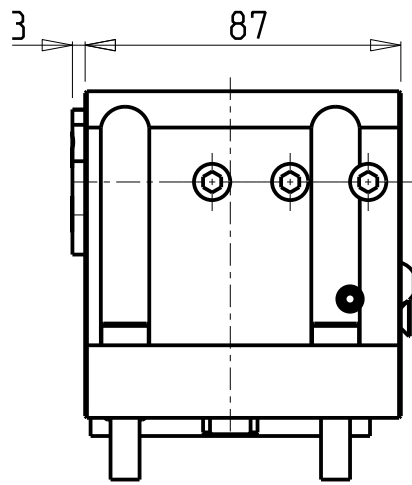
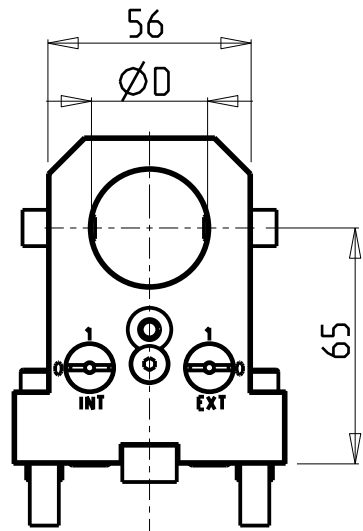
47842 S. GIOVANNI IN M. (RN)  
e-mail: mtma@mtmarchetti.com  
http://www.mtmarchetti.com

PRODUZIONE MODULI ROTANTI

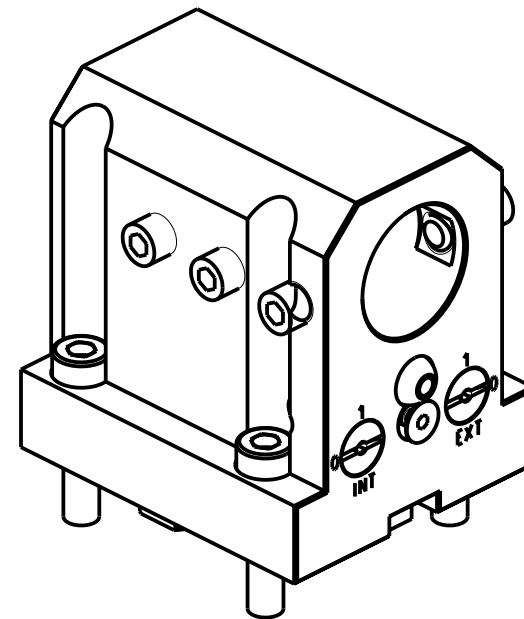


PAGINA VCT550-5-00

10/2018



KIT ADDUZIONE INTERNA (OPZIONALE)  
 KIT FOR INTERNAL COOLANT (OPTIONAL)  
 KIT FÜR INTERNE KUEHLMITTELZUFUHR (OPTIONAL)  
 Ø32-Ø1 1/4" KIT1000001



PER BOCCOLE DI RIDUZIONE VEDI PAG. TBL150-1-00  
 FOR REDUCING BUSHINGS SEE PAGE TBL150-1-00  
 FÜR REDUZIERBUCHSE SIEHE SEITE TBL150-1-00

Cod. MT	N°Utensili N°Tools N°Werkzeuge	Reversibile lato mandrino/contromandrino Reversible sub/main spindle side Umkehrbare Spindel-seite/ Gegenspindel-seite	Lubrificazione int. opzionale Coolant through optional Innenkuehlung Optional	Lubrificazione est. Ext. coolant Aussenkuehlung	Misure Dimensions Masse	D
DW00293200	1	X	X	X	mm	32
DW00293175	1	X	X	X	Inch	1 1/4"

VICTOR  
 MOD: VTURN-NP16CM

PORTAUTENSILE ASSIALE PER BARENO Ø32mm / Ø1 1/4" H=65mm  
 Axial single boring bar holder Ø32mm / Ø1 1/4" H=65mm  
 Axial Bohrhälter Ø32mm / Ø1 1/4" H=65mm

Subject to change without notice.

**M.T. srl**

Via Casino Albini 480  
 Tel. 0541/956034-957884  
 Fax 0541/956341  
 47842 S. GIOVANNI IN M. (RN)  
 e-mail: mtma@mtmarchetti.com  
 http://www.mtmarchetti.com

PRODUZIONE MODULI ROTANTI



PAGINA VCT650-5-10