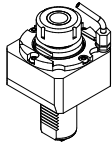
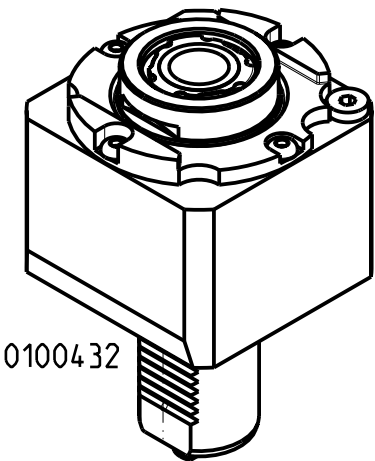
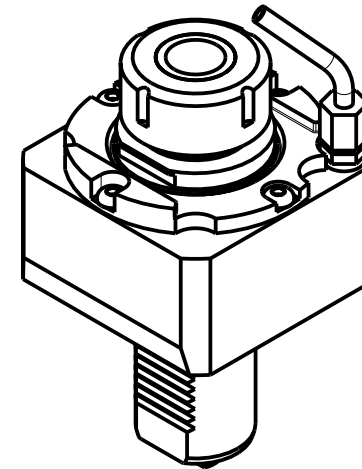
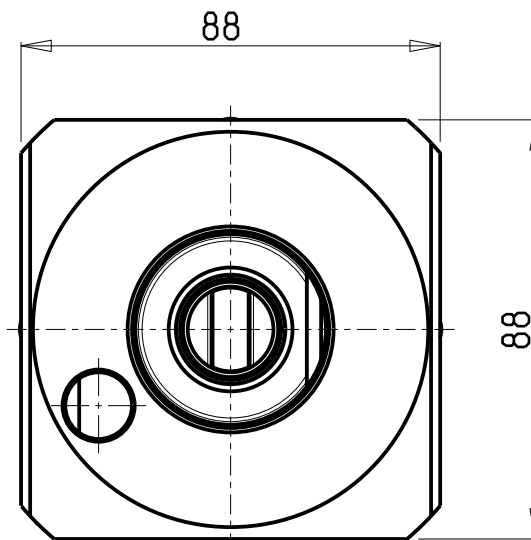
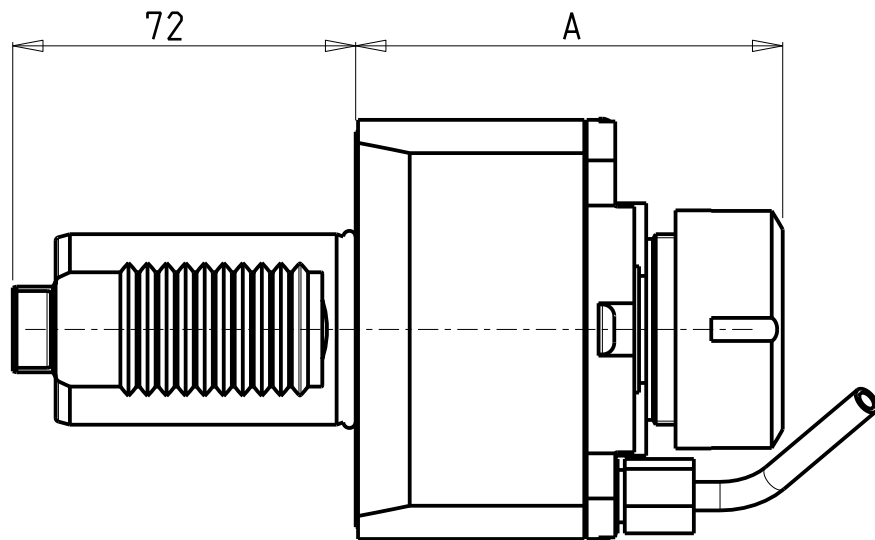


		PAGINA Page Seite
MODULO MOTORIZZATO RADIALE VD140 Radial driven tool VD140 Radial angetriebenes Werkzeug VD140		TKW 010.3.00
MODULO MOTORIZZATO ASSIALE VD140 Axial driven tool VD140 Axial angetriebenes Werkzeug VD140		TKW 150.3.10
MODULO MOTORIZZATO ASSIALE MTSK VD140 Axial MTSK driven tool VD140 Axial MTSK angetriebenes Werkzeug VD140		TKW 150.3.10.K
MODULO MOTORIZZATO ASSIALE VD140 Axial driven tool VD140 Axial angetriebenes Werkzeug VD140		TKW 150.3.15
MODULO MOTORIZZATO ASSIALE MTSK VD140 Axial MTSK driven tool VD140 Axial MTSK angetriebenes Werkzeug VD140		TKW 150.3.15.K
MODULO MOTORIZZATO ASSIALE PER CONTROMANDRINO VD140 Axial driven tool for subspindle VD140 Axial angetriebenes Werkzeug fuer Gegenspindel VD140		TKW 155.3.10
MODULO MOTORIZZATO ASSIALE MTSK PER CONTROMANDRINO VD140 Axial MTSK driven tool for subspindle VD140 Axial MTSK angetriebenes Werkzeug fuer Gegenspindel VD140		TKW 155.3.10.K
MODULO MOTORIZZATO ASSIALE PER CONTROMANDRINO VD140 Axial driven tool for subspindle VD140 Axial angetriebenes Werkzeug fuer Gegenspindel VD140		TKW 155.3.15
MODULO MOTORIZZATO ASSIALE MTSK PER CONTROMANDRINO VD140 Axial MTSK driven tool for subspindle VD140 Axial MTSK angetriebenes Werkzeug fuer Gegenspindel VD140		TKW 155.3.15.K
MODULO MOTORIZZATO ASSIALE MOLTIPLICATO I=1:3 VD140 H=90mm Axial geared-up I=1:3 driven tool VD140 H=90mm Axial angetriebenes Werkzeug uebersetzt I=1:3 VD140 H=90mm		TKW 208.3.10
MODULO MOT. ASSIALE PER CONTROMANDR. MOLTIPLICATO I=1:3 VD140 H=90mm Axial geared-up I=1:3 driven tool for subspindle VD140 H=90mm Axial angetriebenes Werkzeug fuer Gegenspindel uebersetzt I=1:3 VD140 H=90mm		TKW 209.3.10
MODULO MOTORIZZATO PORTACREATORE VD140 Driven gear hobber VD140 Angetriebenes Zahnradwaelzfraes-Werkzeug VD140		TKW 340.3.05

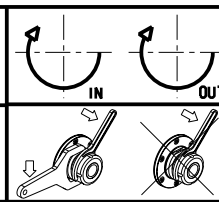


TKW 0100432


- Chiave inclusa
- Key included
- Schluessel inbegriffen

Cod. MT	Cod. TAKISAWA	Mandrino Spindle Spindel	I	RPM	Coppia Max Max Torque Max Drehmoment	Lubr.interna Coolant through Innenkuehlung	Lubrificazione est. Ext. coolant Aussenkuehlung	A	CHIAVI NON INCLUSE Keys not included Schluessel nicht einbegriffen	
TKW 0100132	GM81998-640A	ER32	1:1	6000	65Nm		X	89.66	CHSTER32	OKU0650004 *
TKW 0100432		ERA32	1:1	6000	65Nm	P=30bar	X	84	CHUB30	OKU0650004 * CHTAER32ZC *

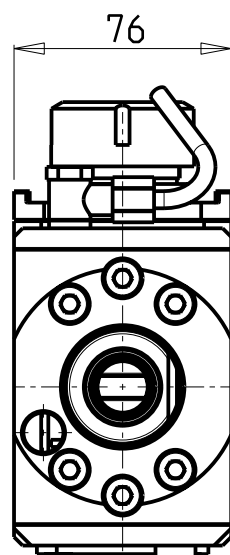
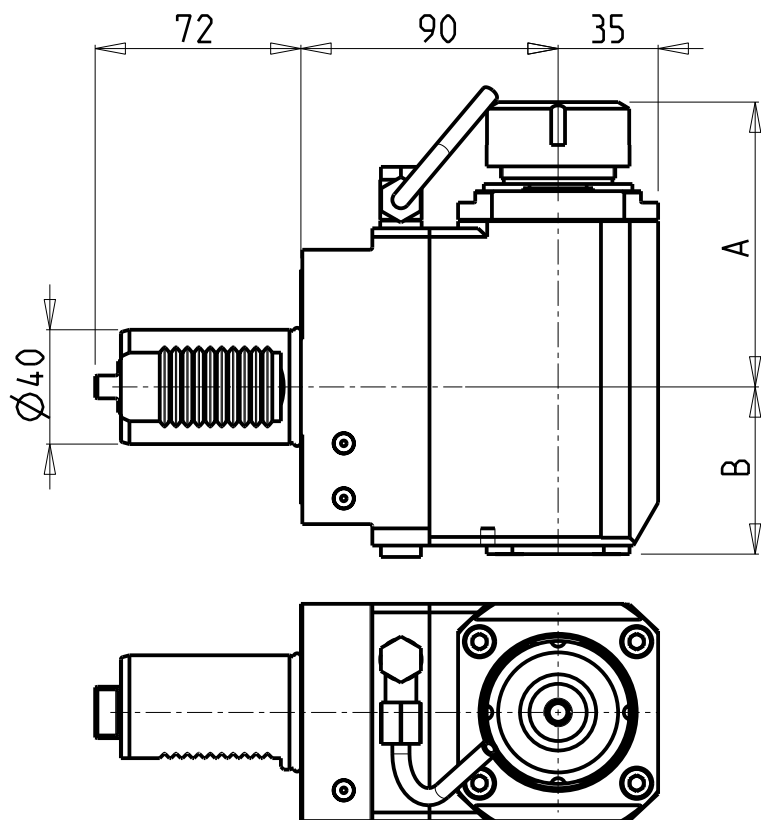
TAKISAWA
 MOD: TMM200/250 - TNR200
 MODULO MOTORIZZATO RADIALE VDI40
 Radial driven tool VDI40
 Radial angetriebenes Werkzeug VDI40



M.T. srl
 Via Casino Albini 480
 Tel. 0541/956034-957884
 Fax 0541/956341
 47842 S. GIOVANNI IN M. (RN)
 e-mail: mtma@mtmarchetti.com
 http://www.mtmarchetti.com

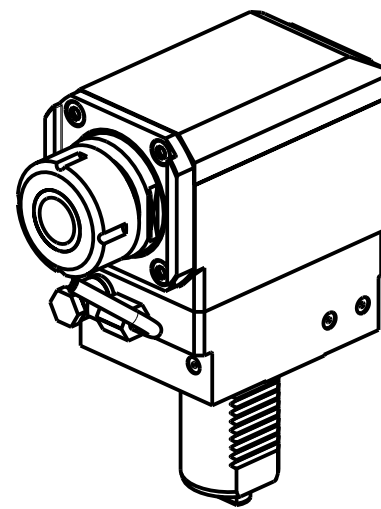
PRODUZIONE MODULI ROTANTI

 PAGINA TKW 010-3-00

Subject to change without notice.



ATTENZIONE - ATTENTION - ACHTUNG

- Per lo smontaggio degli utensili utilizzare sempre la chiave di contrasto come indicato nel manuale d'uso.
- For disassembly of the tools use always the contrast key as mentioned in the user instructions.
- Fuer das Abmontieren der Werkzeuge immer den Gegenschlüssel benutzen wie in der Bedienungsanleitung erwaeht.



Cod. MT	Cod. TAKISAWA	Mandrino Spindle Spindel	I	RPM	Coppia Max Max Torque Max Drehmoment	Lubrificazione int. Coolant through Innenkuehlung	Lubr.esterna Ext. coolant Aussenkuehlung	A	B	CHIAVI NON INCLUSE Keys not included Schluesssel nicht einbegriffen	
TKW 0090132	GM81998-642A	ER32	1:1	6000	65Nm	-	X	99.7	58.5	CHSTER32	OKU0650004
TKW 0090232	-	ER32	1:1	6000	65Nm	P=70bar	X	99.7	69.5	CHSTER32	OKU0650004
TKW 0090140	-	ER40	1:1	6000	65Nm	-	X	103.7	58.5	CHSTER40	OKU0650004
TKW 0090240	-	ER40	1:1	6000	65Nm	P=70bar	X	103.7	69.5	CHSTER40	OKU0650004

- Chiave inclusa
- Key included
- Schluesssel inbegriffen

TAKISAWA

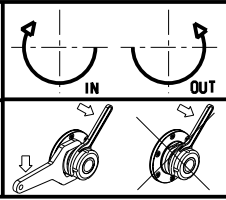
MOD: TMM200/250 - TNR200

MODULO MOTORIZZATO ASSIALE VDI40

Axial driven tool VDI40

Axial angetriebenes Werkzeug VDI40

Subject to change without notice.

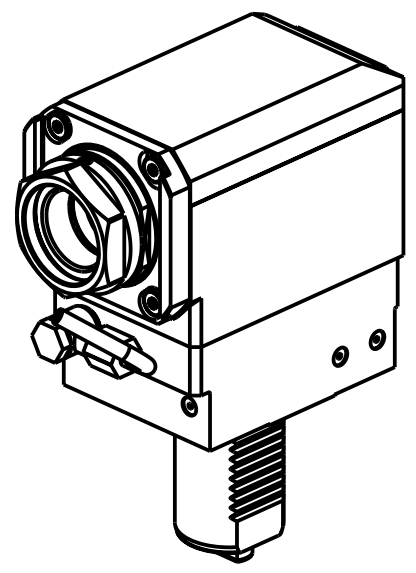
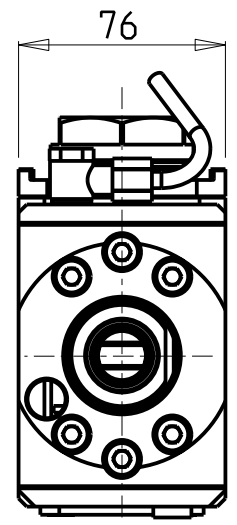
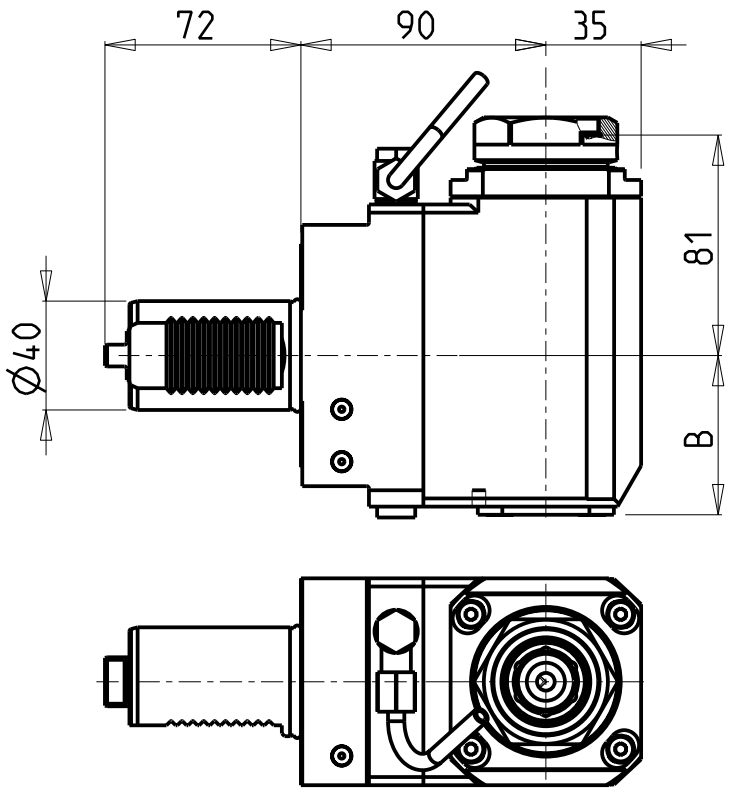


M.T. srl
 Via Casino Albini 480
 Tel. 0541/956034-957884
 Fax 0541/956341
 47842 S. GIOVANNI IN M. (RN)
 e-mail: mtma@mtmarchetti.com
 http://www.mtmarchetti.com

PRODUZIONE MODULI ROTANTI



PAGINA TKW 150-3-10



ATTENZIONE - ATTENTION - ACHTUNG

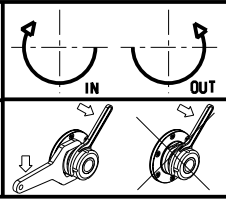
- Per lo smontaggio degli utensili utilizzare sempre la chiave di contrasto come indicato nel manuale d'uso.
- For disassembly of the tools use always the contrast key as mentioned in the user instructions.
- Fuer das Abmontieren der Werkzeuge immer den Gegenschlüssel benutzen wie in der Bedienungsanleitung erwaehnt.

PER PORTAUTENSILI MODULARI MTSK-40 VEDI PAG. TBL300-1-40
 FOR MTSK-40 QUICK CHANGE TOOLHOLDERS CLAMPINGS SEE PAGE TBL300-1-40
 FUER MTSK-40 MODULARE WERKZEUGAUFNAHMEN SIEHE SEITE TBL300-1-40

Cod. MT	Mandrino Spindle Spindel	I	RPM	Coppia Max Max Torque Max Drehmoment	Lubrificazione int. Coolant through Innenkuehlung	Lubrificazione est. Ext. coolant Aussenkuehlung	B	CHIAVI NON INCLUDE Keys not included Schlüssel nicht einbegriffen	
TKW 0510140	MTSK-40	1:1	6000	65Nm	-	X	58.5	CHUB46	OKU0650004 *
TKW 0510240	MTSK-40	1:1	6000	65Nm	P=70bar	X	69.5	CHUB46	OKU0650004 *

- Chiave inclusa
- Key included
- Schlüssel einbegriffen

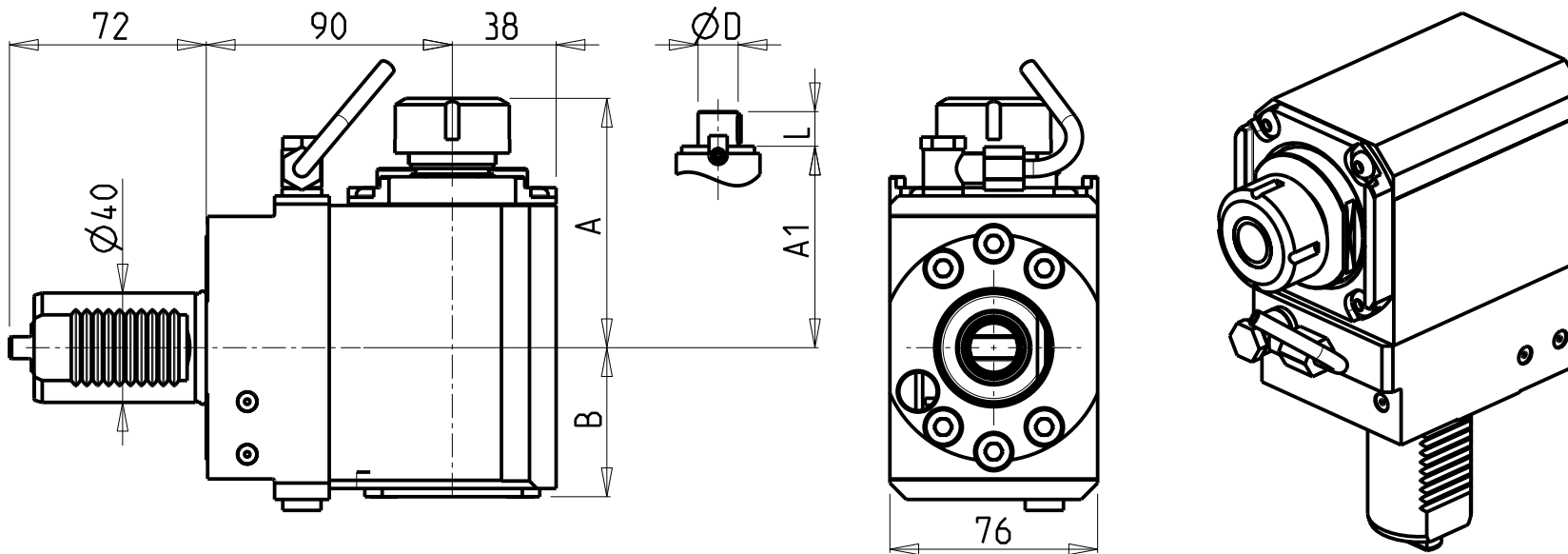
TAKISAWA
 MOD: TMM200/250 - TNR200
 MODULO MOTORIZZATO ASSIALE MTSK VDI40
 Axial MTSK driven tool VDI40
 Axial MTSK angetriebenes Werkzeug VDI40



M.T. srl
 Via Casino Albini 480
 Tel. 0541/956034-957884
 Fax 0541/956341
 47842 S. GIOVANNI IN M. (RN)
 e-mail: mtma@mtmarchetti.com
 http://www.mtmarchetti.com

PRODUZIONE MODULI ROTANTI

Subject to change without notice.



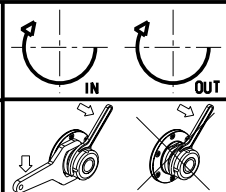
ATTENZIONE - ATTENTION - ACHTUNG

- Per lo smontaggio degli utensili utilizzare sempre la chiave di contrasto come indicato nel manuale d'uso.
- For disassembly of the tools use always the contrast key as mentioned in the user instructions.
- Fuer das Abmontieren der Werkzeuge immer den Gegenschlüssel benutzen wie in der Bedienungsanleitung erwäehnt.


- Chiave inclusa
- Key included
- Schluessel inbegriffen

Cod. MT	Cod. TAKISAWA	Mandrino Spindel	I	RPM	Coppia Max Max Torque Max Drehmoment	Lubr.interna Coolant through Innenkuehlung	Lubr.esterna Ext. coolant Aussenkuehlung	A	A1	B	D	L	CHIAVI NON INCLUDE Keys not included Schluessel nicht einbegriffen		
TKW 0140125	-	ER25	1:1	6000	65Nm	-	X	91.16	-	54.5	-	-	-	CHSTER25	OKU0650004
TKW 0140132	GM81998-642R	ER32	1:1	6000	65Nm	-	X	93.66	-	54.5	-	-	-	CHSTER32	OKU0650004
TKW 0140140	-	ER40	1:1	6000	65Nm	-	X	98.16	-	54.5	-	-	-	CHSTER40	OKU0650004
TKW 0140325	-	ERA25	1:1	6000	65Nm	-	X	65	-	54.5	-	-	CHUB27	CHTAER25ZC	OKU0650004
TKW 0140225	-	ER25	1:1	6000	65Nm	P=70bar	X	91.16	-	67	-	-	-	CHSTER25	OKU0650004
TKW 0140232	-	ER32	1:1	6000	65Nm	P=70bar	X	93.66	-	67	-	-	-	CHSTER32	OKU0650004
TKW 0140240	-	ER40	1:1	6000	65Nm	P=70bar	X	98.16	-	67	-	-	-	CHSTER40	OKU0650004
TKW 0140425	-	ERA25	1:1	6000	65Nm	P=70bar	X	65	-	67	-	-	CHUB27	CHTAER25ZC	OKU0650004
TKW 0140516	-	Ø16x17	1:1	6000	65Nm	-	X	-	67.5	54.5	16	17	-	CH_VTCROCE_M08	OKU0650004
TKW 0140522	-	Ø22x19	1:1	6000	65Nm	-	X	-	67.5	54.5	22	19	-	CH_VTCROCE_M10	OKU0650004
TKW 0140527	-	Ø27x21	1:1	6000	65Nm	-	X	-	70	54.5	27	21	-	CH_VTCROCE_M12	OKU0650004

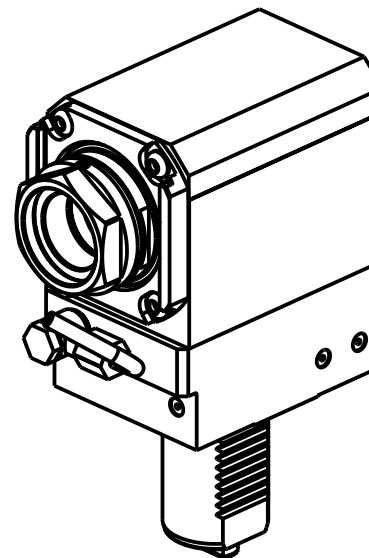
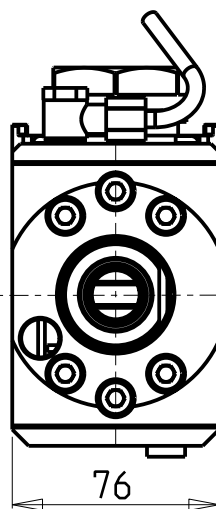
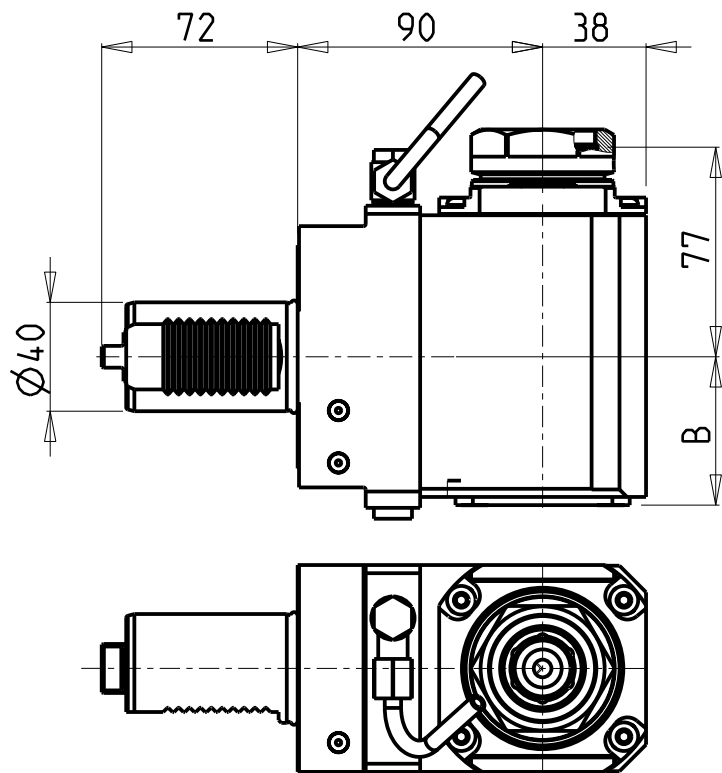
TAKISAWA
MOD: TMM200/250 - TNR200
 MODULO MOTORIZZATO ASSIALE VDI40
 Axial driven tool VDI40
 Axial angetriebenes Werkzeug VDI40



M.T. srl
 Via Casino Albini 480
 Tel. 0541/956034-957884
 Fax 0541/956341
 47842 S. GIOVANNI IN M. (RN)
 e-mail: mtma@mtmarchetti.com
 http://www.mtmarchetti.com

PRODUZIONE MODULI ROTANTI

 PAGINA TKW 150-3-15

Subject to change without notice.



ATTENZIONE - ATTENTION - ACHTUNG

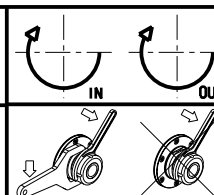
- Per lo smontaggio degli utensili utilizzare sempre la chiave di contrasto come indicato nel manuale d'uso.
- For disassembly of the tools use always the contrast key as mentioned in the user instructions.
- Fuer das Abmontieren der Werkzeuge immer den Gegenschlüssel benutzen wie in der Bedienungsanleitung erwaehnt.

PER PORTAUTENSILI MODULARI MTSK-40 VEDI PAG. TBL300-1-40
 FOR MTSK-40 QUICK CHANGE TOOLHOLDERS CLAMPINGS SEE PAGE TBL300-1-40
 FUER MTSK-40 MODULARE WERKZEUGAUFNAHMEN SIEHE SEITE TBL300-1-40

Cod. MT	Mandrino Spindle Spindel	I	RPM	Coppia Max Max Torque Max Drehmoment	Lubrificazione int. Coolant through Innenkuehlung	Lubrificazione est. Ext. coolant Aussenkuehlung	B	CHIAVI NON INCLUDE Keys not included Schlüssel nicht einbegriffen	
TKW0520140	MTSK-40	1:1	6000	65Nm	-	X	54.5	CHUB46	OKU0650004 ■
TKW0520240	MTSK-40	1:1	6000	65Nm	P=70bar	X	67	CHUB46	OKU0650004 ■

• Chiave inclusa
• Key included
• Schlüssel inbegriffen

TAKISAWA
 MOD: TMM200/250 - TNR200
 MODULO MOTORIZZATO ASSIALE MTSK VDI40
 Axial MTSK driven tool VDI40
 Axial MTSK angetriebenes Werkzeug VDI40



M.T. srl
 Via Casino Albini 480
 Tel. 0541/956034-957884
 Fax 0541/956341
 47842 S. GIOVANNI IN M. (RN)
 e-mail: mtma@mtmarchetti.com
 http://www.mtmarchetti.com

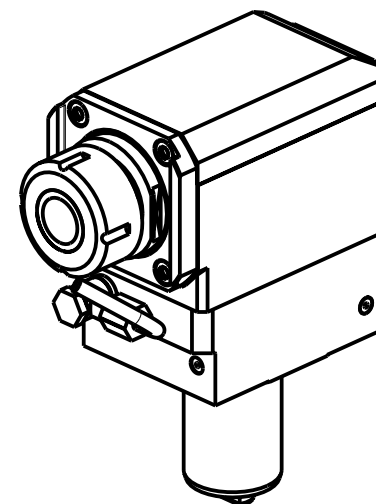
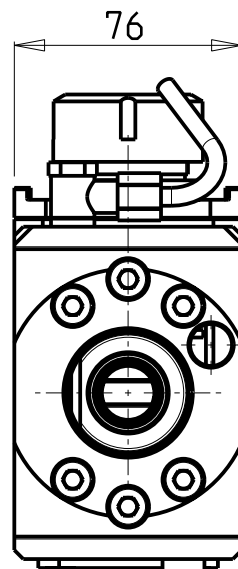
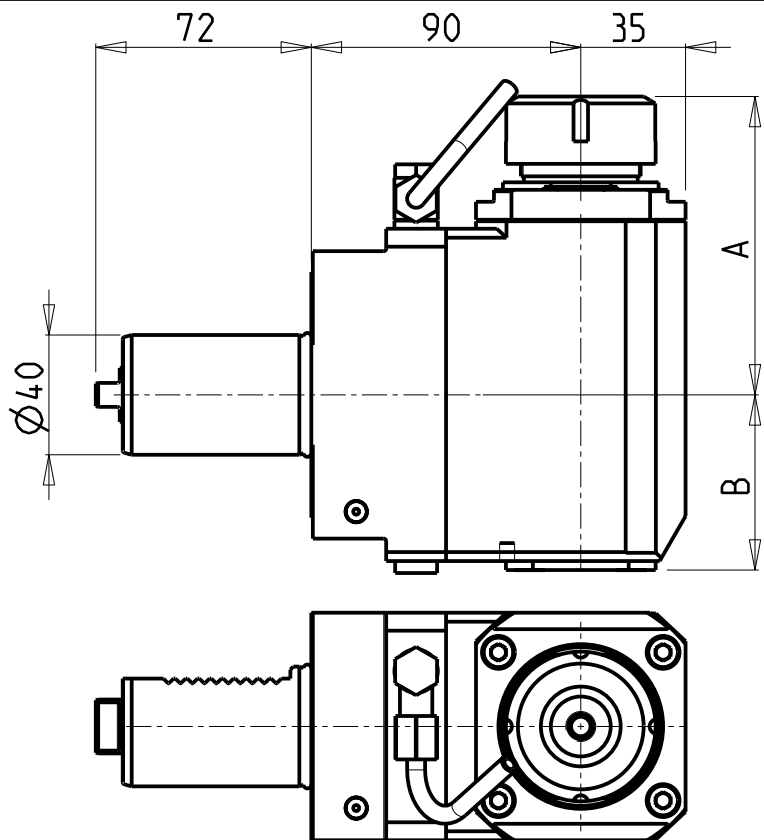
PRODUZIONE MODULI ROTANTI



PAGINA TKW 150-3-15-K

Subject to change without notice.

10/2018



ATTENZIONE - ATTENTION - ACHTUNG

- Per lo smontaggio degli utensili utilizzare sempre la chiave di contrasto come indicato nel manuale d'uso.
- For disassembly of the tools use always the contrast key as mentioned in the user instructions.
- Fuer das Abmontieren der Werkzeuge immer den Gegenschlüssel benutzen wie in der Bedienungsanleitung erwaeht.

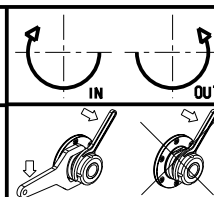
- Chiave inclusa
- Key included
- Schluessel inbegriffen

Cod. MT	Mandrino Spindle Spindel	I	RPM	Coppia Max Max Torque Max Drehmoment	Lubrificazione int. Coolant through Innenkuehlung	Lubr.esterna Ext. coolant Aussenkuehlung	A	B	CHIAVI NON INCLUSE Keys not included Schluessel nicht einbegriffen	
TKW 0091132	ER32	1:1	6000	65Nm	-	X	99.7	58.5	CHSTER32	OKU0650004 *
TKW 0091232	ER32	1:1	6000	65Nm	P=70bar	X	99.7	69.5	CHSTER32	OKU0650004 *
TKW 0091140	ER40	1:1	6000	65Nm	-	X	103.7	58.5	CHSTER40	OKU0650004 *
TKW 0091240	ER40	1:1	6000	65Nm	P=70bar	X	103.7	69.5	CHSTER40	OKU0650004 *

TAKISAWA
MOD: TMM200/250 - TNR200

MODULO MOTORIZZATO ASSIALE PER CONTROMANDRINO VDI40
Axial driven tool for subspindle VDI40
Axial angetriebenes Werkzeug fuer Gegenspindel VDI40

Subject to change without notice.



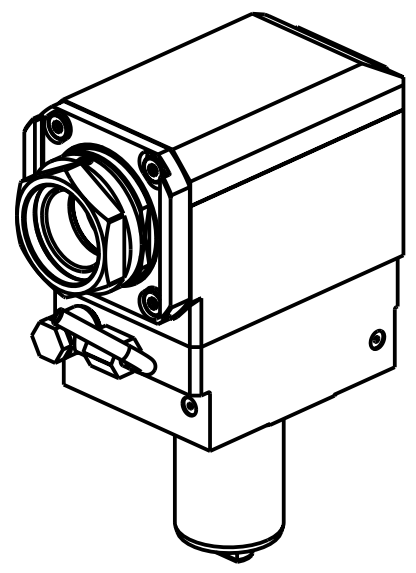
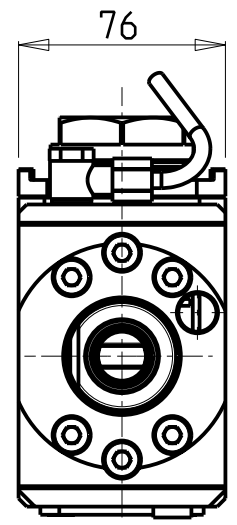
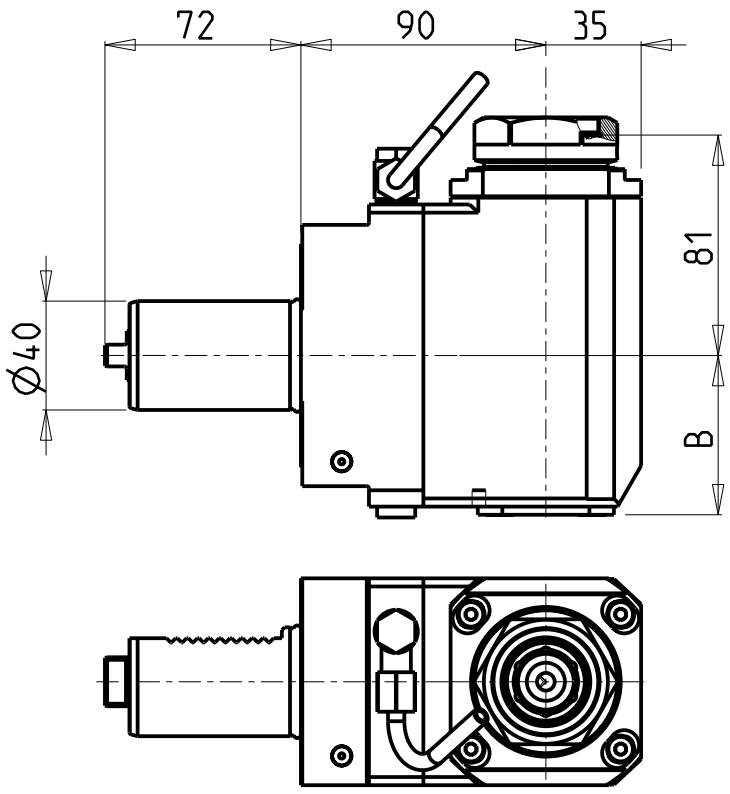
M.T. srl

Via Casino Albini 480
Tel. 0541/956034-957884
Fax 0541/956341
47842 S. GIOVANNI IN M. (RN)
e-mail: mtma@mtmarchetti.com
http://www.mtmarchetti.com

PRODUZIONE MODULI ROTANTI



PAGINA TKW 155-3-10



ATTENZIONE - ATTENTION - ACHTUNG

- Per lo smontaggio degli utensili utilizzare sempre la chiave di contrasto come indicato nel manuale d'uso.
- For disassembly of the tools use always the contrast key as mentioned in the user instructions.
- Fuer das Abmontieren der Werkzeuge immer den Gegenschlüssel benutzen wie in der Bedienungsanleitung erwaehnt.

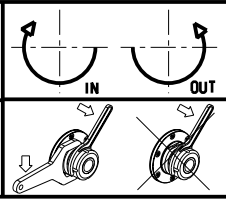
PER PORTAUTENSILI MODULARI MTSK-40 VEDI PAG. TBL300-1-40
 FOR MTSK-40 QUICK CHANGE TOOLHOLDERS CLAMPINGS SEE PAGE TBL300-1-40
 FUER MTSK-40 MODULARE WERKZEUGAUFNAHMEN SIEHE SEITE TBL300-1-40

Cod. MT	Mandrino Spindle Spindel	I	RPM	Coppia Max Max Torque Max Drehmoment	Lubrificazione int. Coolant through Innenkuehlung	Lubrificazione est. Ext. coolant Aussenkuehlung	B	CHIAVI NON INCLUDE Keys not included Schlüssel nicht einbegriffen	
								CHUB46	OKU0650004
TKW 0511140	MTSK-40	1:1	6000	65Nm	-	X	58.5	CHUB46	OKU0650004
TKW 0511240	MTSK-40	1:1	6000	65Nm	P=70bar	X	69.5	CHUB46	OKU0650004

- Chiave inclusa
- Key included
- Schlüssel inbegriffen

TAKISAWA
 MOD: TMM200/250 - TNR200

MODULO MOTORIZZATO ASSIALE MTSK PER CONTROMANDRINO VD140
 Axial MTSK driven tool for subspindle VD140
 Axial MTSK angetriebenes Werkzeug fuer Gegenspindel VD140

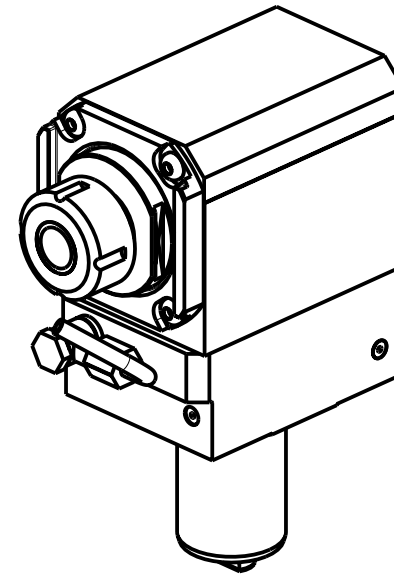
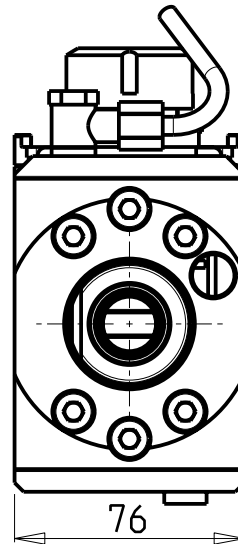
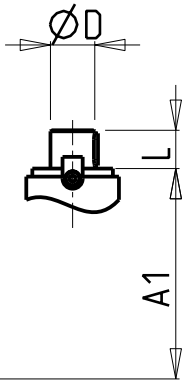
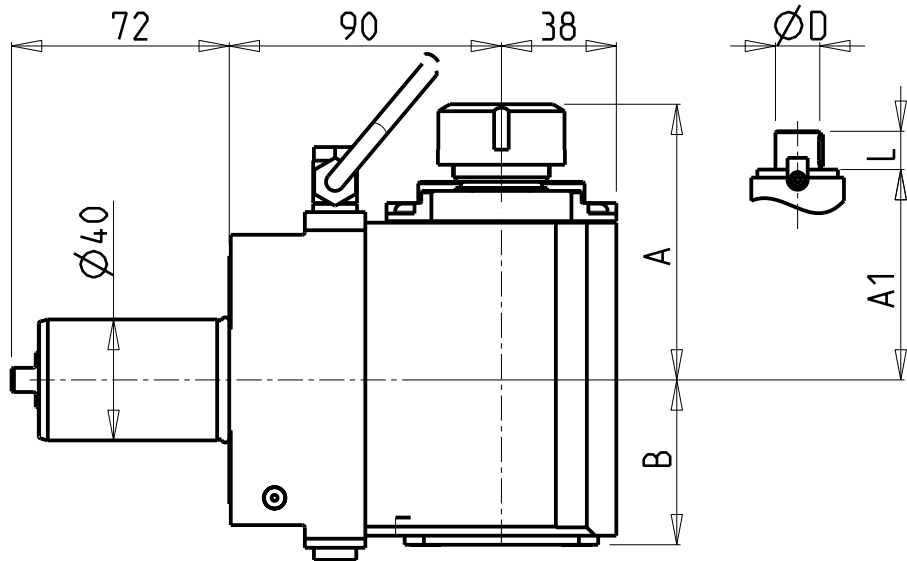


M.T. srl
 Via Casino Albini 480
 Tel. 0541/956034-957884
 Fax 0541/956341
 47842 S. GIOVANNI IN M. (RN)
 e-mail: mtma@mtmarchetti.com
 http://www.mtmarchetti.com

PRODUZIONE MODULI ROTANTI

PAGINA TKW 155-3-10-K

Subject to change without notice.



ATTENZIONE - ATTENTION - ACHTUNG

- Per lo smontaggio degli utensili utilizzare sempre la chiave di contrasto come indicato nel manuale d'uso.
- For disassembly of the tools use always the contrast key as mentioned in the user instructions.
- Fuer das Abmontieren der Werkzeuge immer den Gegenschluessel benutzen wie in der Bedienungsanleitung erwaeht.

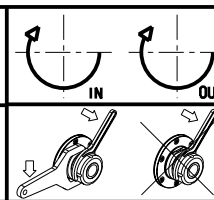
- Chiave inclusa
- Key included
- Schluessel inbegriffen

Cod. MT	Cod. TAKISAWA	Mandrino Spindle Spindel	I	RPM	Coppia Max Max Torque Max Drehmoment	Lubr.interna Coolant through Innenkuehlung	Lubr.esterna Ext. coolant Aussenkuehlung	A	A1	B	D	L	CHIAVI NON INCLUDE Keys not included Schluessel nicht einbegriffen		
TKW 014 1125	-	ER25	1:1	6000	65Nm	-	X	91.16	-	54.5	-	-	-	CHSTER25	OKU0650004 •
TKW 014 1132	GM81998-642L	ER32	1:1	6000	65Nm	-	X	93.66	-	54.5	-	-	-	CHSTER32	OKU0650004 •
TKW 014 1140	-	ER40	1:1	6000	65Nm	-	X	98.16	-	54.5	-	-	-	CHSTER40	OKU0650004 •
TKW 014 1325	-	ERA25	1:1	6000	65Nm	-	X	65	-	54.5	-	-	CHUB27	CHTAER25ZC •	OKU0650004 •
TKW 014 1225	-	ER25	1:1	6000	65Nm	P=70bar	X	91.16	-	67	-	-	-	CHSTER25	OKU0650004 •
TKW 014 1232	-	ER32	1:1	6000	65Nm	P=70bar	X	93.66	-	67	-	-	-	CHSTER32	OKU0650004 •
TKW 014 1240	-	ER40	1:1	6000	65Nm	P=70bar	X	98.16	-	67	-	-	-	CHSTER40	OKU0650004 •
TKW 014 14 25	-	ERA25	1:1	6000	65Nm	P=70bar	X	65	-	67	-	-	CHUB27	CHTAER25ZC •	OKU0650004 •
TKW 014 1516	-	Ø16x17	1:1	6000	65Nm	-	X	-	67.5	54.5	16	17	-	CH_VTCROCE_M08	OKU0650004 •
TKW 014 1522	-	Ø22x19	1:1	6000	65Nm	-	X	-	67.5	54.5	22	19	-	CH_VTCROCE_M10	OKU0650004 •
TKW 014 1527	-	Ø27x21	1:1	6000	65Nm	-	X	-	70	54.5	27	21	-	CH_VTCROCE_M12	OKU0650004 •

TAKISAWA
MOD: TMM200/250 - TNR200

MODULO MOTORIZZATO ASSIALE PER CONTROMANDRINO VD140
Axial driven tool for subspindle VD140
Axial angetriebenes Werkzeug fuer Gegenspindel VD140

Subject to change without notice.



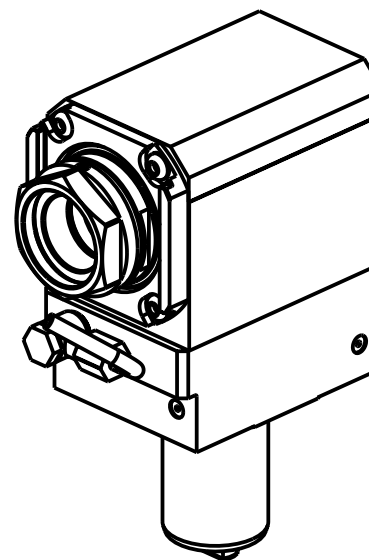
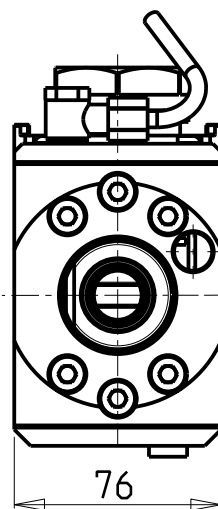
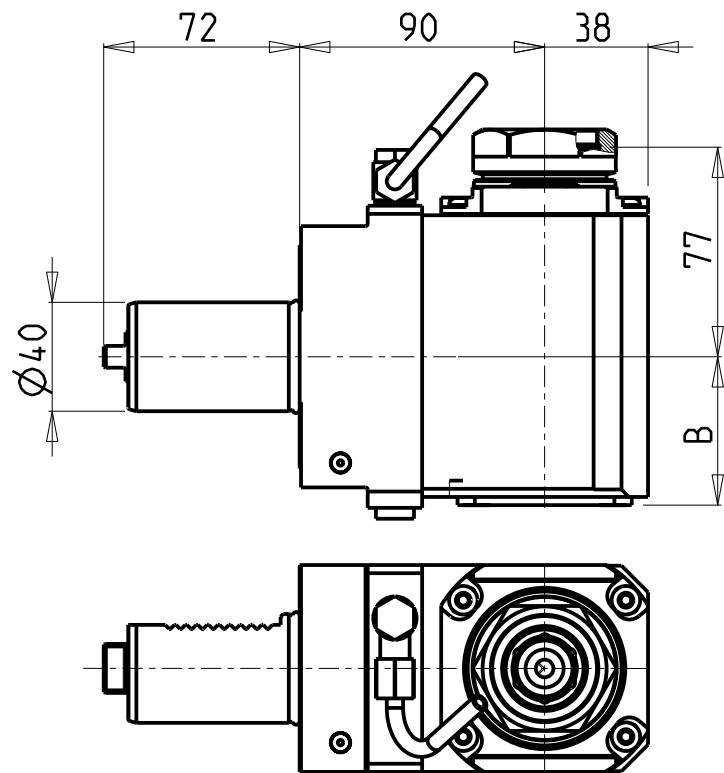
M.T. srl

Via Casino Albini 480
Tel. 0541/956034-957884
Fax 0541/956341
47842 S. GIOVANNI IN M. (RN)
e-mail: mtma@mtmarchetti.com
http://www.mtmarchetti.com

PRODUZIONE MODULI ROTANTI



PAGINA TKW 155-3-15



ATTENZIONE - ATTENTION - ACHTUNG

- Per lo smontaggio degli utensili utilizzare sempre la chiave di contrasto come indicato nel manuale d'uso.
- For disassembly of the tools use always the contrast key as mentioned in the user instructions.
- Fuer das Abmontieren der Werkzeuge immer den Gegenschlüssel benutzen wie in der Bedienungsanleitung erwaehnt.

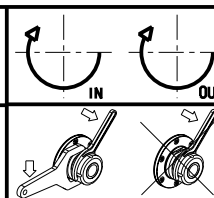
PER PORTAUTENSILI MODULARI MTSK-40 VEDI PAG. TBL300-1-40
 FOR MTSK-40 QUICK CHANGE TOOLHOLDERS CLAMPINGS SEE PAGE TBL300-1-40
 FUER MTSK-40 MODULARE WERKZEUGAUFNAHMEN SIEHE SEITE TBL300-1-40

Cod. MT	Mandrino Spindle Spindel	I	RPM	Coppia Max Max Torque Max Drehmoment	Lubrificazione int. Coolant through Innenkuehlung	Lubrificazione est. Ext. coolant Aussenkuehlung	B	CHIAVI NON INCLUDE Keys not included Schlüssel nicht einbegriffen	
								CHUB46	OKU0650004
TKW0521140	MTSK-40	1:1	6000	65Nm	-	X	54.5	CHUB46	OKU0650004
TKW0521240	MTSK-40	1:1	6000	65Nm	P=70bar	X	67	CHUB46	OKU0650004

• Chiave inclusa
• Key included
• Schlüssel inbegriffen

TAKISAWA
 MOD: TMM200/250 - TNR200

MODULO MOTORIZZATO ASSIALE MTSK PER CONTROMANDRINO VD140
 Axial MTSK driven tool for subspindle VD140
 Axial MTSK angetriebenes Werkzeug fuer Gegenspindel VD140



M.T. srl
 Via Casino Albini 480
 Tel. 0541/956034-957884
 Fax 0541/956341
 47842 S. GIOVANNI IN M. (RN)
 e-mail: mtma@mtmarchetti.com
 http://www.mtmarchetti.com

PRODUZIONE MODULI ROTANTI



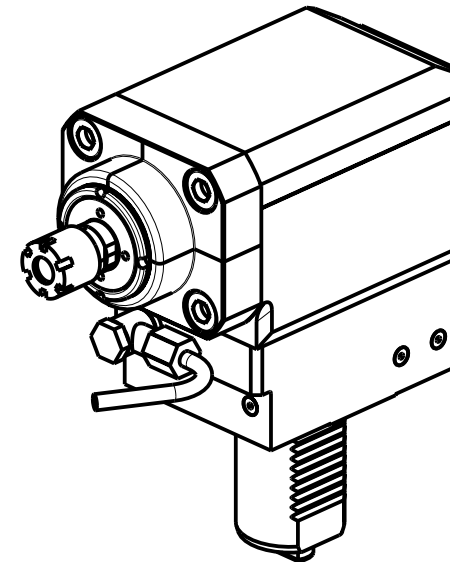
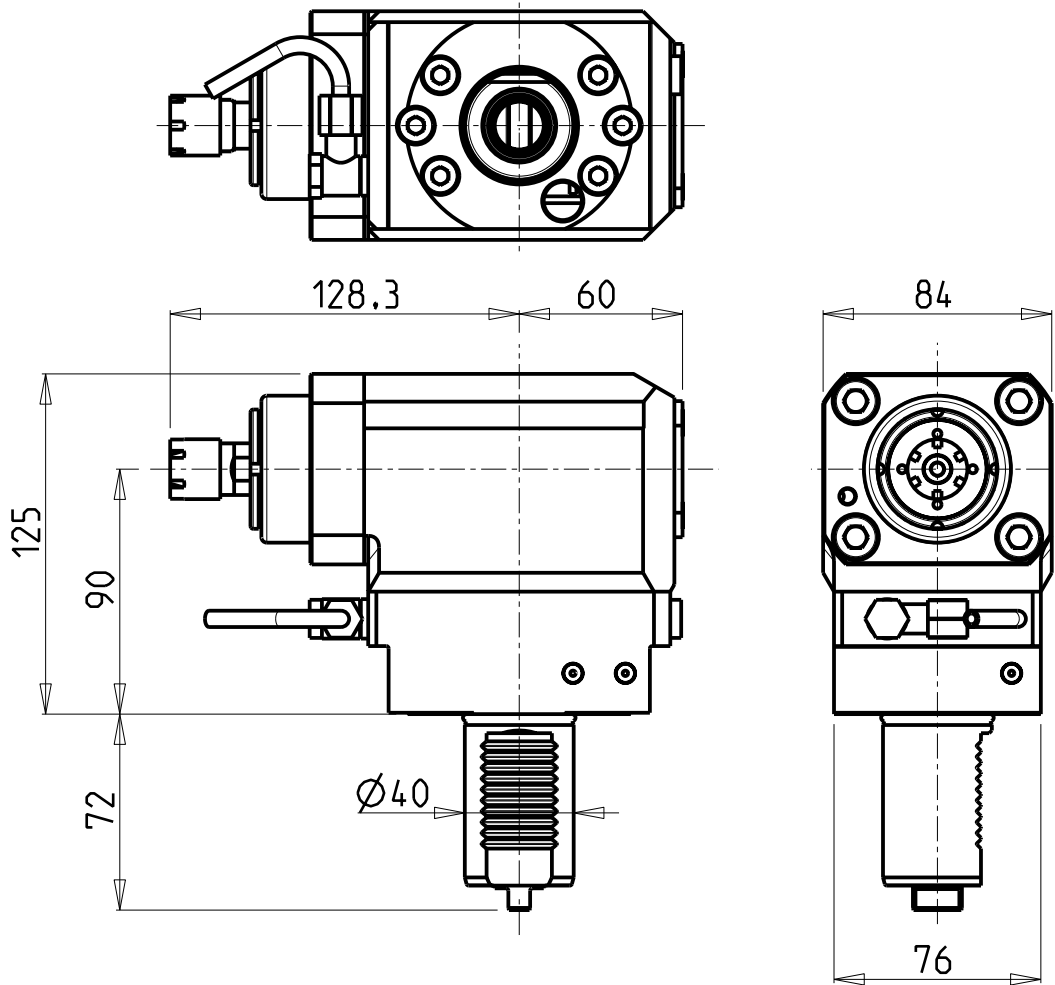
PAGINA TKW 155-3-15-K

Subject to change without notice.

10/2018

ATTENZIONE - ATTENTION - ACHTUNG

- Per lo smontaggio degli utensili utilizzare sempre la chiave di contrasto come indicato nel manuale d'uso.
- For disassembly of the tools use always the contrast key as mentioned in the user instructions.
- Fuer das Abmontieren der Werkzeuge immer den Gegenschlüssel benutzen wie in der Bedienungsanleitung erwaeht.

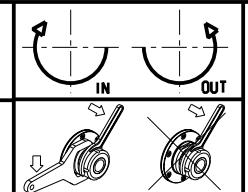


Cod. MT	Mandrino Spindle Spindel	I	RPM	Coppia Max Max Torque Max Drehmoment	Lubrificazione est. Ext. coolant Aussenkuehlung	CHIAVI INCLUSE Keys included Schluessel einbegriffen	
TKW 0260016	ER16	1:3	18000	10Nm	X	CHUB17	CHMNER16

TAKISAWA
 MOD: TMM200/250 - TNR200

MODULO MOTORIZZATO ASSIALE MOLTIPLICATO I=1:3 VDI40 H=90mm
 Axial geared-up I=1:3 driven tool VDI40 H=90mm
 Axial angetriebenes Werkzeug uebersetzt I=1:3 VDI40 H=90mm

Subject to change without notice.



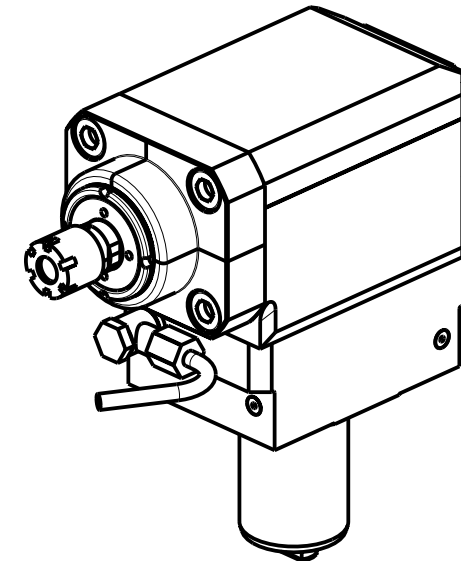
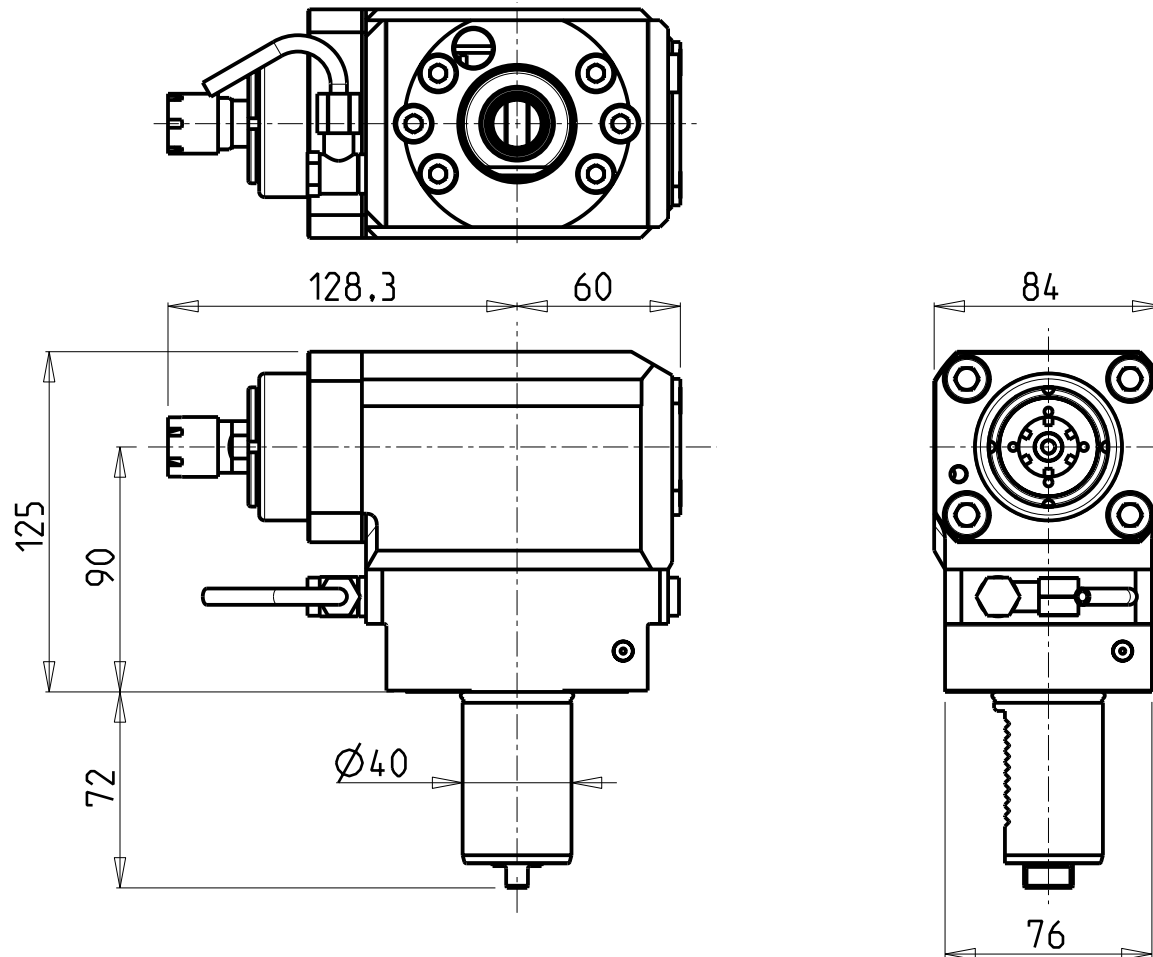
M.T. srl
 Via Casino Albini 480
 Tel. 0541/956034-957884
 Fax 0541/956341
 47842 S. GIOVANNI IN M. (RN)
 e-mail: mtma@mtmarchetti.com
 http://www.mtmarchetti.com

PRODUZIONE MODULI ROTANTI

PAGINA TKW 208-3-10

ATTENZIONE - ATTENTION - ACHTUNG

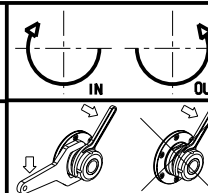
- Per lo smontaggio degli utensili utilizzare sempre la chiave di contrasto come indicato nel manuale d'uso.
- For disassembly of the tools use always the contrast key as mentioned in the user instructions.
- Fuer das Abmontieren der Werkzeuge immer den Gegenschluessel benutzen wie in der Bedienungsanleitung erwaeht.



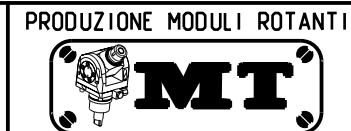
Cod. MT	Mandrino Spindle Spindel	I	RPM	Coppia Max Max Torque Max Drehmoment	Lubrificazione est. Ext. coolant Aussenkuhlung	CHIAVI INCLUSE Keys included Schluessel einbegriffen	
TKW 0261016	ER16	1:3	18000	10Nm	X	CHUB17	CHMNER16

TAKISAWA
MOD: TMM200/250 - TNR200

MODULO MOTORIZZATO ASSIALE PER CONTROMANDRINO MOLTIPLICATO I=1:3 VDI40 H=90mm
Axial geared-up I=1:3 driven tool for subspindle VDI40 H=90mm
Axial angetriebenes Werkzeug fuer Gegenspindel uebersetzt I=1:3 VDI40 H=90mm



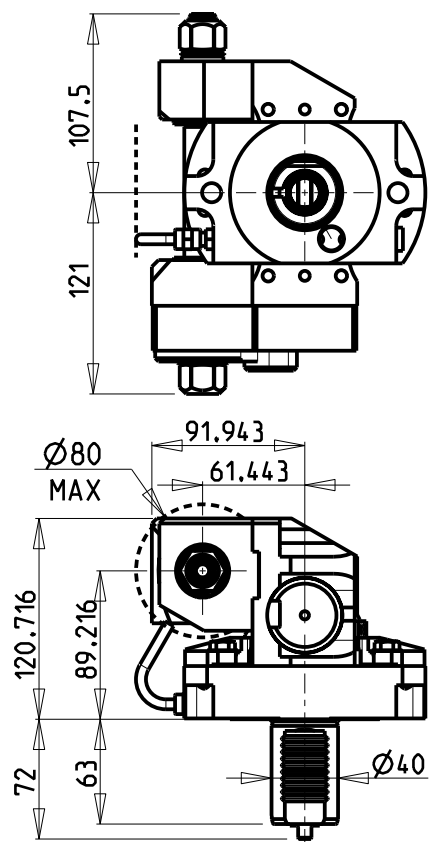
M.T. srl
Via Casino Albini 480
Tel. 0541/956034-957884
Fax 0541/956341
47842 S. GIOVANNI IN M. (RN)
e-mail: mtma@mtmarchetti.com
http://www.mtmarchetti.com



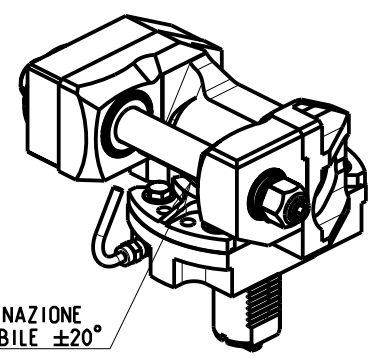
PAGINA TKW 209-3-10

Subject to change without notice.

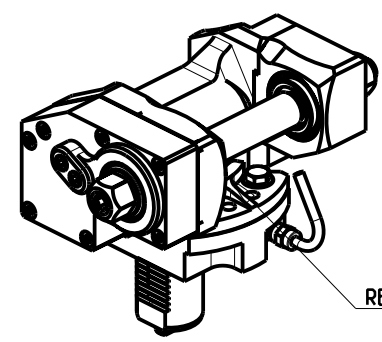
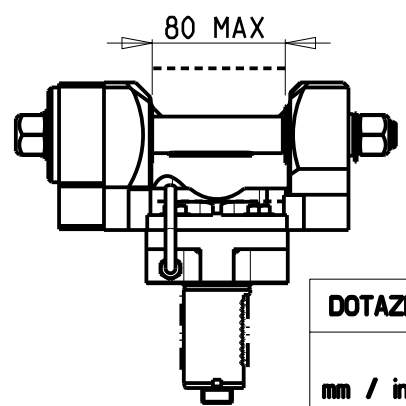
10/2018



VDI DESTRO
VDI Right hand
VDI Recht

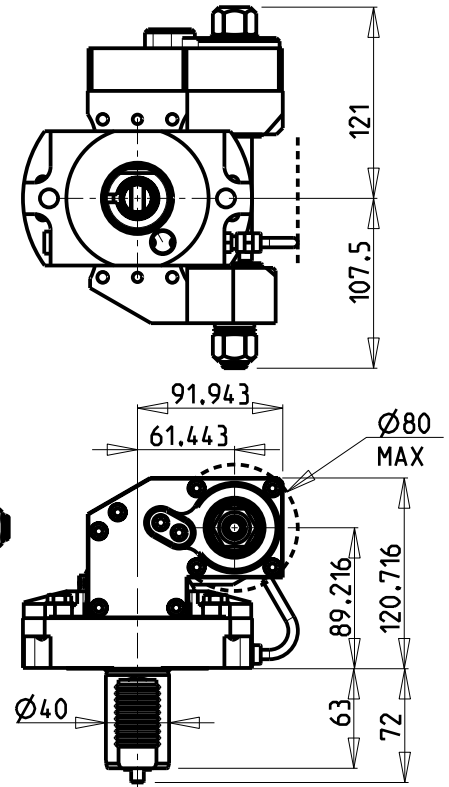
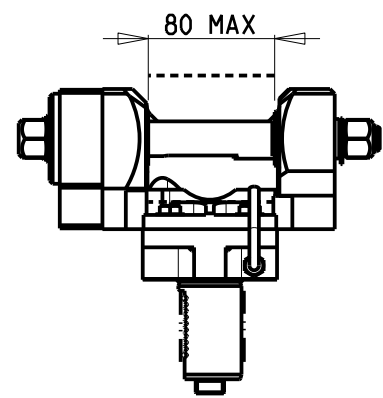


INCLINAZIONE
REGOLABILE ±20°



VDI SINISTRO
VDI Left hand
VDI Link

INCLINAZIONE
REGOLABILE ±20°



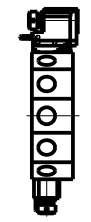
DOTAZIONI - SUPPLIED WITH - AUSSTATTUNG

mm / inch	- N°1 ALBERO + DISTANZIALI - N°1 SHAFT + SPACER - N°1 DORN + ABSTANDSSTUECK
-----------	---

PER ALBERI E DISTANZIALI VEDI PAG. TBL250-1-00
FOR SHAFT END SPACER SEE PAGE TBL250-1-00
FUER DORN UND ABSTANDSSTUECK SEITE TBL250-1-00

Cod. MT	I	RPM max	Coppia Max Max Torque Max Drehmoment	Lubrificazione est. Ext. coolant Aussenkuehlung	D (mm)	D (Inch)	CHIAVI INCLUSE Keys included Schlüssel inbegriffen			VDI
							CHUB24	CHUB13	CHESL08	
TKW 0151100	1:1	4000	60Nm	X	16-22-27-32	3/4"-1"-1 1/4"	CHUB24	CHUB13	CHESL08	DESTRO - Right - Recht
TKW 0152100	2:1	2000	80Nm	X	16-22-27-32	3/4"-1"-1 1/4"	CHUB24	CHUB13	CHESL08	DESTRO - Right - Recht
TKW 0151110	1:1	4000	60Nm	X	16-22-27-32	3/4"-1"-1 1/4"	CHUB24	CHUB13	CHESL08	SINISTRO - Left - Link
TKW 0152110	2:1	2000	80Nm	X	16-22-27-32	3/4"-1"-1 1/4"	CHUB24	CHUB13	CHESL08	SINISTRO - Left - Link

**TORRETTE RADIALI
RADIAL TURRETS
RADIAL REVOLVER**



TAKISAWA

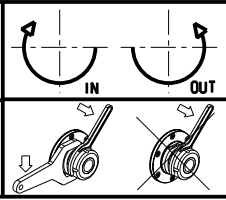
MOD: TMM200/250 - TNR200

MODULO MOTORIZZATO PORTACREATORE VDI40

Driven gear hobber VDI40

Angetriebenes Zahnradwaelzfraes-Werkzeug VDI40

Subject to change without notice.



M.T. srl
Via Casino Albini 480
Tel. 0541/956034-957884
Fax 0541/956341
47842 S. GIOVANNI IN M. (RN)
e-mail: mtma@tmarchetti.com
http://www.tmmarchetti.com

PRODUZIONE MODULI ROTANTI



PAGINA TKW 340-3-05