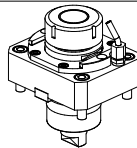
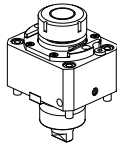
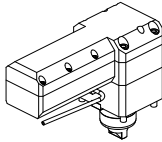
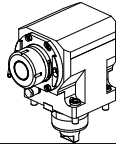
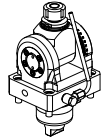
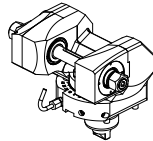
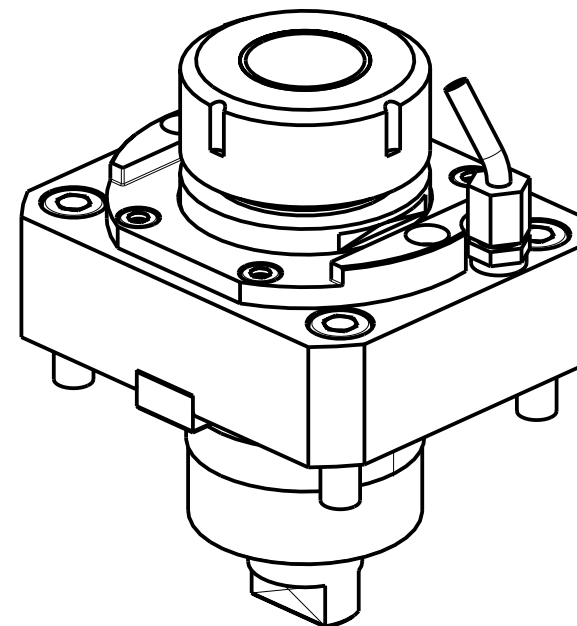
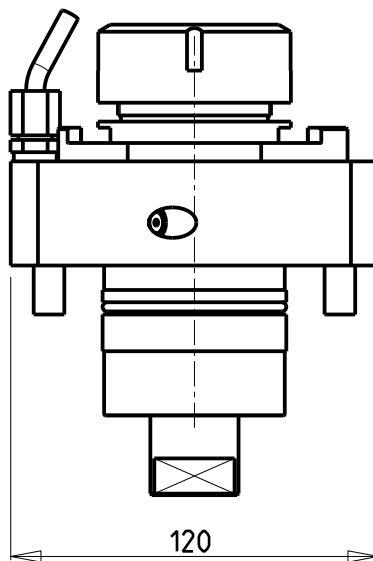
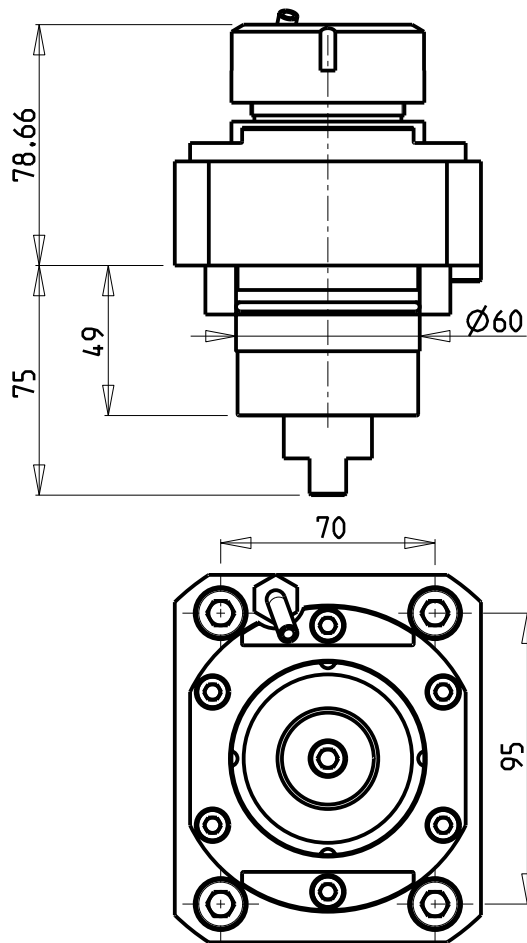


		PAGINA Page Seite
MODULO MOTORIZZATO RADIALE Radial driven tool Radial angetriebenes Werkzeug		TKW 010.4.00
MODULO MOTORIZZATO RADIALE ALTA PRESSIONE Radial driven tool high pressure Radial angetriebenes Werkzeug hochdruck		TKW 010.4.20 NEW
MODULO MOTORIZZATO RADIALE ROVESCiato DISASSATO IN Z 180mm Radial inverted driven tool re-directed in Z by 180mm Radial angetriebenes Werkzeug ungekehrt achsversetzt in Z um 180mm		TKW 120.4.10 NEW
MODULO MOTORIZZATO ASSIALE Axial driven tool Axial angetriebenes Werkzeug		TKW 150.4.10
MODULO MOTORIZZATO ORIENTABILE ±90° H=70mm ±90° adjustable angle driven tool H=70mm Angetriebenes Werkzeug schwenkbar ±90° H=70mm		TKW 333.4.00 NEW
MODULO MOTORIZZATO PORTACREATORE MAGGIORATO Reinforced driven gear hobber Angetriebenes Zahnradwaelzfraes-Werkzeug vergroessert		TKW 340.4.60



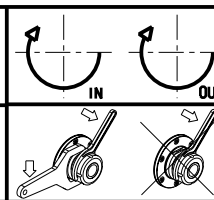
- Chiave inclusa
- Key included
- Schluessel inbegriffen

Cod. MT	Mandrino Spindle Spindel	I	RPM	Coppia Max Max Torque Max Drehmoment	Lubrificazione est. Ext. coolant Aussenkuehlung	CHIAVI NON INCLUSE Keys not included Schluessel nicht einbegriffen
TKW 0170140	ER40	1:1	3500	90Nm	X	CHSTER40 OKU0430007

TAKISAWA
 MOD: NEX315/715 - LS800M - VTL750M - LA350M - LA250YS 12ST.

MODULO MOTORIZZATO RADIALE
 Radial driven tool
 Radial angetriebenes Werkzeug

Subject to change without notice.

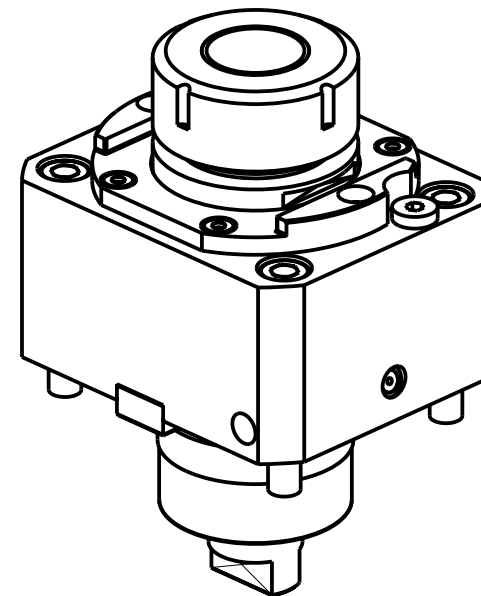
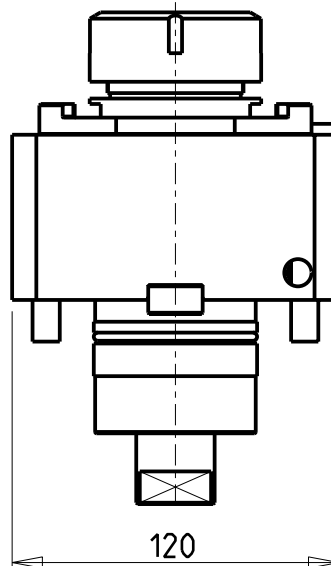
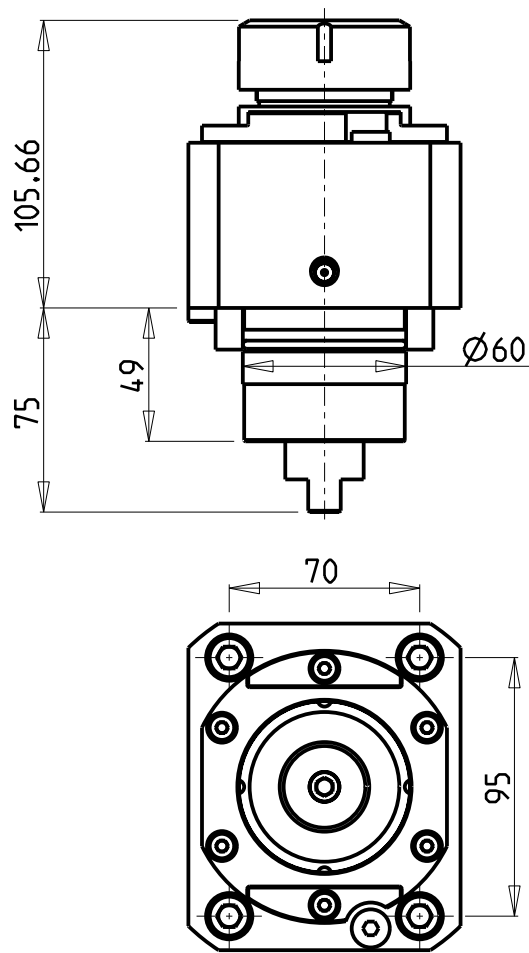


M.T. srl
 Via Casino Albini 480
 Tel. 0541/956034-957884
 Fax 0541/956341
 47842 S. GIOVANNI IN M. (RN)
 e-mail: mtma@mtmarchetti.com
 http://www.mtmarchetti.com

PRODUZIONE MODULI ROTANTI



PAGINA TKW 010-4-00

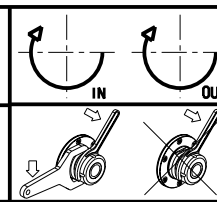


- Chiave inclusa
- Key included
- Schluessel inbegriffen

Cod. MT	Mandrino Spindle Spindel	I	RPM	Coppia Max Max Torque Max Drehmoment	Lubr.interna Coolant through Innenkuehlung	Lubrificazione est. Ext. coolant Aussenkuehlung	CHIAVI NON INCLUSE Keys not included Schluessel nicht einbegriffen
TKW 0660140	ER40	1:1	3500	90Nm	P=70bar	X	CHSTER40 OKU0430007 • NEW

TAKISAWA
 MOD: NEX315/715 - LS800M - VTL750M - LA350M - LA250YS 12ST.

MODULO MOTORIZZATO RADIALE ALTA PRESSIONE
 Radial driven tool high pressure
 Radial angetriebenes Werkzeug hochdruck



M.T. srl
 Via Casino Albini 480
 Tel. 0541/956034-957884
 Fax 0541/956341
 47842 S. GIOVANNI IN M. (RN)
 e-mail: mtma@mtmarchetti.com
 http://www.mtmarchetti.com

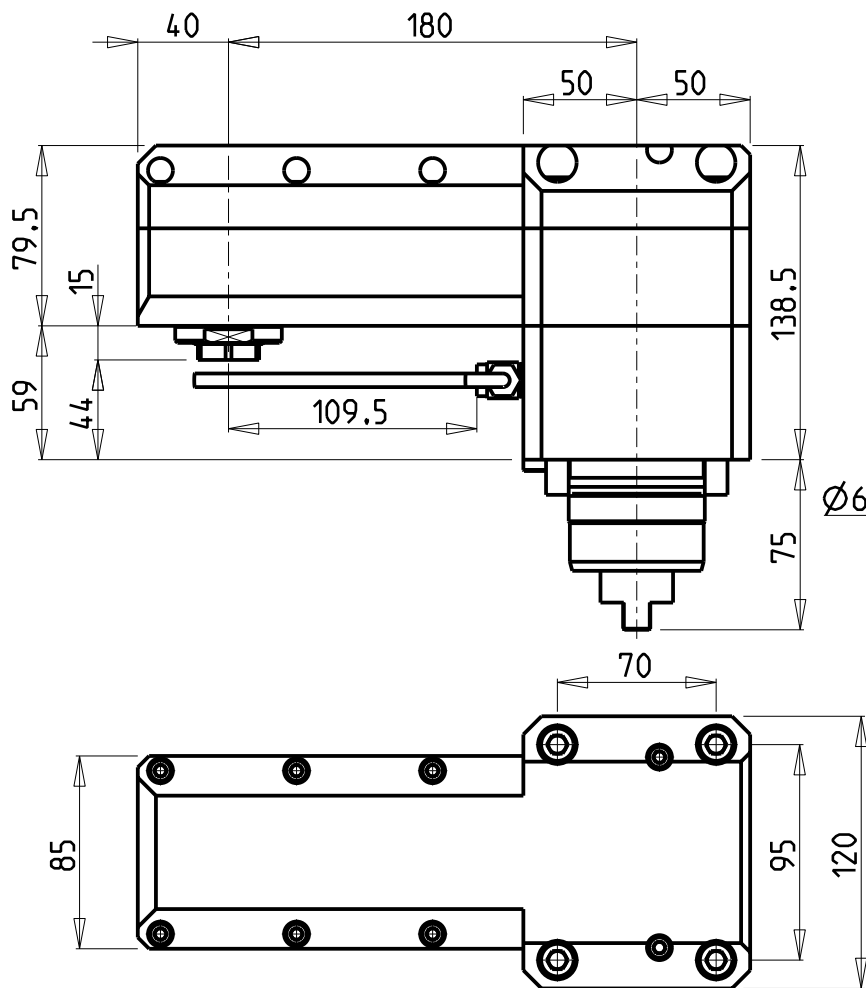
PRODUZIONE MODULI ROTANTI



PAGINA TKW 010-4-20

Subject to change without notice.

10/2018



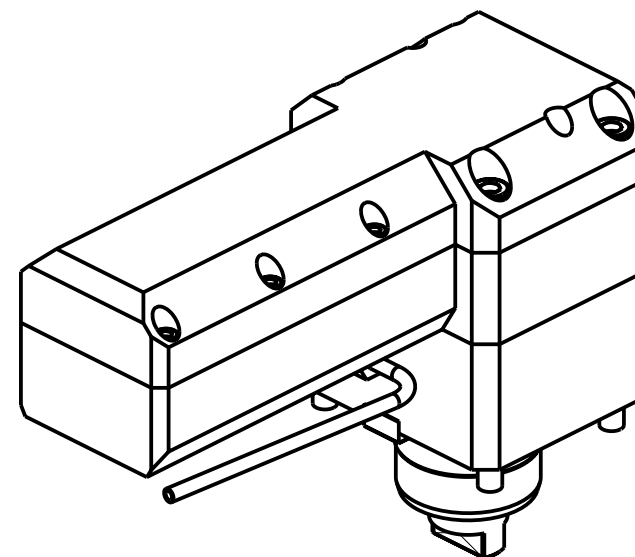
PER LAVORAZIONI INTERNE
SU FORI Ø120 MINIMO

For machining internal
holes with Ø120 min. hole

Fuer interne Bearbeitungen
am Loch minimum Ø120

ATTENZIONE - ATTENTION - ACHTUNG

- Per lo smontaggio degli utensili utilizzare sempre la chiave di contrasto come indicato nel manuale d'uso.
- For disassembly of the tools use always the contrast key as mentioned in the user instructions.
- Fuer das Abmontieren der Werkzeuge immer den Gegenschlüssel benutzen wie in der Bedienungsanleitung erwaeht.

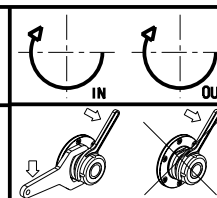


Cod. MT	Mandrino Spindle Spindel	I	RPM MAX	Coppia Max Max Torque Max Drehmoment	Lubrificazione est. Ext. coolant Aussenkuehlung	CHIAVI NON INCLUSE Keys not included Schluessel nicht einbegriffen	
TKW 0790325	ERA25	1:1	3500	60Nm	X	CHUB27	CHUB42

NEW

TAKISAWA
MOD: NEX315/715 - LS800M - VTL750M - LA350M - LA250YS 12ST.

MODULO MOTORIZZATO RADIALE ROVESCiato DISASSATO IN Z 180mm
Radial inverted driven tool re-directed in Z by 180mm
Radial angetriebenes Werkzeug ungekehrt achsversetzt in Z um 180mm



M.T. srl
Via Casino Albini 480
Tel. 0541/956034-957884
Fax 0541/956341
47842 S. GIOVANNI IN M. (RN)
e-mail: mtma@mtmarchetti.com
http://www.mtmarchetti.com

PRODUZIONE MODULI ROTANTI



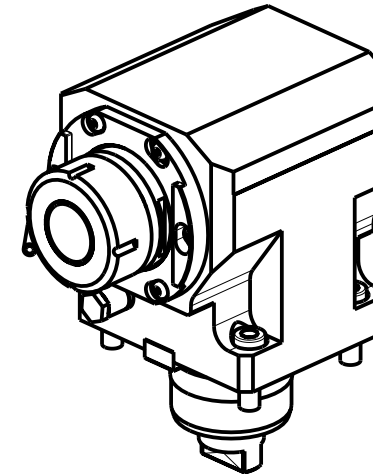
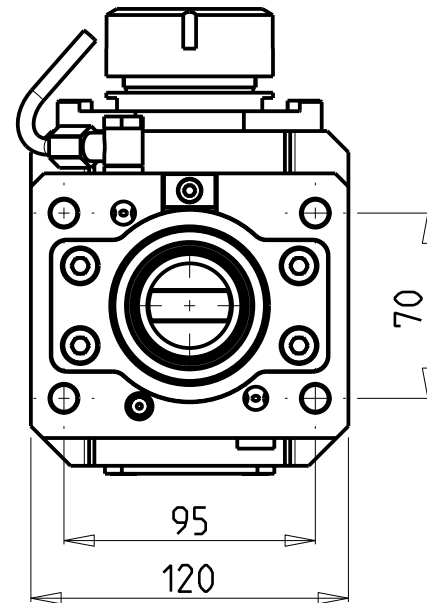
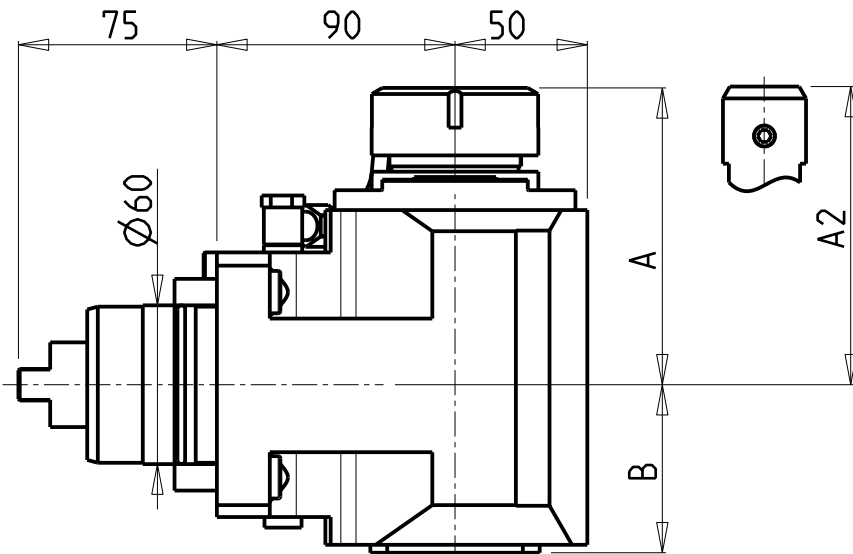
PAGINA TKW 120-4-10

Subject to change without notice.

10/2018

ATTENZIONE - ATTENTION - ACHTUNG

- Per lo smontaggio degli utensili utilizzare sempre la chiave di contrasto come indicato nel manuale d'uso.
- For disassembly of the tools use always the contrast key as mentioned in the user instructions.
- Fuer das Abmontieren der Werkzeuge immer den Gegenschlüssel benutzen wie in der Bedienungsanleitung erwaeht.



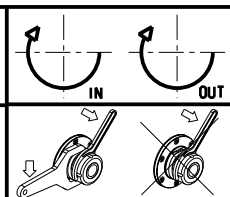
- Chiave inclusa
- Key included
- Schlüssel inbegriffen

Cod. MT	Mandrino Spindel Spindel	I	RPM	Coppia Max Max Torque Max Drehmoment	Reversibile lato mandrino/contromandrino Reversible sub/main spindle side Umkehrbare Spindel-seite/ Gegenspindel-seite	Lubr.interna Coolant through Innenkuehlung	Lubr.esterna Ext. coolant Aussenkuehlung	A	A2	B	CHIAVI NON INCLUDE Keys not included Schluessel nicht einbegriffen	
TKW 0160140	ER40	1:1	3500	90Nm	X	-	X	112.16	-	63.5	CHSTER40	OKU0430007 •
TKW 0160240	ER40	1:1	3500	90Nm	X	P=70bar	X	112.16	-	76	CHSTER40	OKU0430007 •
TKW 0160532	WELDON 32	1:1	3500	90Nm	X	-	X	-	107	63.5	-	-
TKW 0160632	WELDON 32	1:1	3500	90Nm	X	P=70bar	X	-	107	76	-	-

TAKISAWA
 MOD: NEX315/715 - LS800M - VTL750M - LA350M - LA250YS 12ST.

MODULO MOTORIZZATO ASSIALE
 Axial driven tool
 Axial angetriebenes Werkzeug

Subject to change without notice.

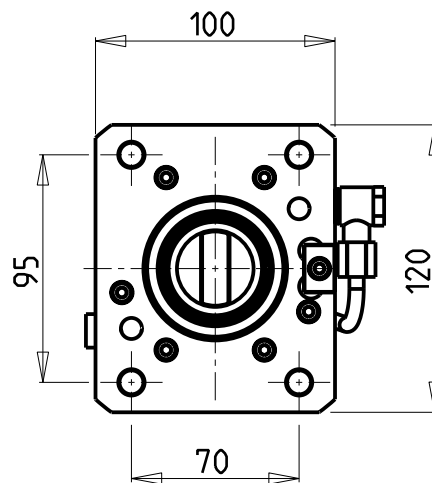
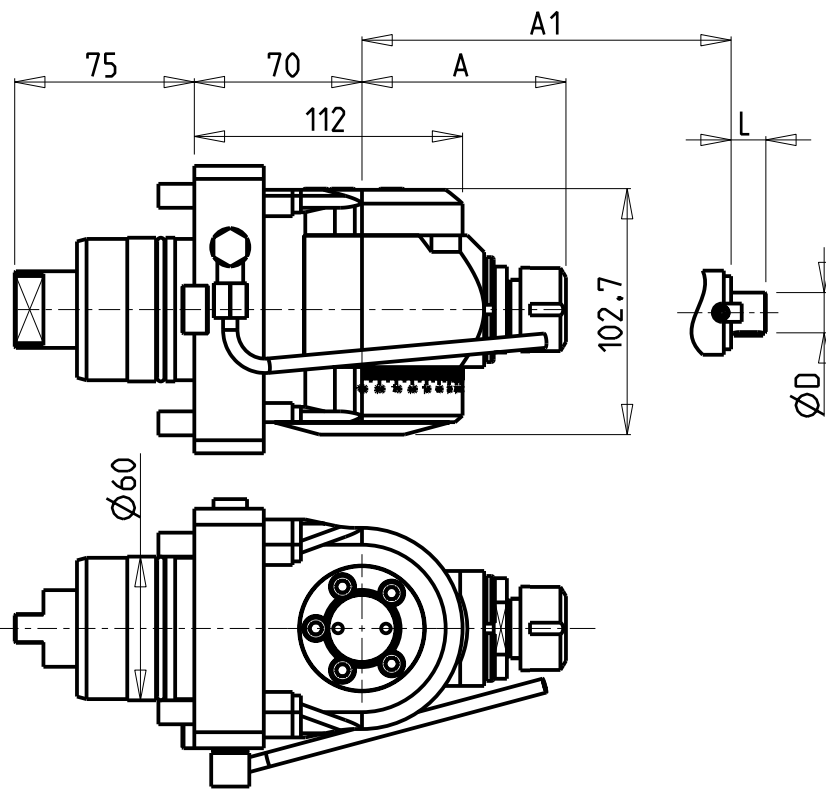


M.T. srl
 Via Casino Albini 480
 Tel. 0541/956034-957884
 Fax 0541/956341
 47842 S. GIOVANNI IN M. (RN)
 e-mail: mtma@mtmarchetti.com
 http://www.mtmarchetti.com

PRODUZIONE MODULI ROTANTI

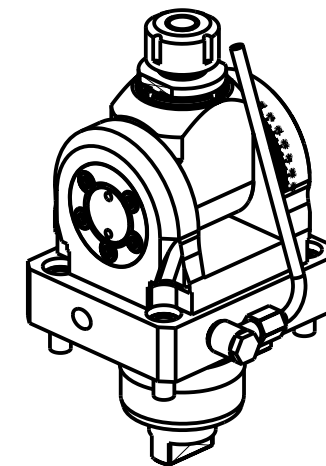


PAGINA TKW 150-4-10



ATTENZIONE - ATTENTION - ACHTUNG

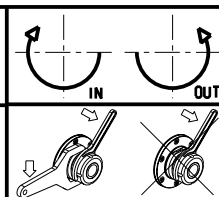
- VERIFICARE LE MISURE DI INGOMBRO PER POSSIBILE INTERFERENZA SU ALCUNI MODELLI DI MACCHINE
- Please check the overall sizes for possible interferences on some machine models
- Bitte überprüfen sie das ausmass um mögliche interferenzen auf einigen maschinen modellen zu vermeiden



Cod. MT	Mandrino Spindle Spindel	I	RPM	Coppia Max Max Torque Max Drehmoment	Reversibile lato mandrino/contromandrino Reversible sub/main spindle side Umkehrbare Spindel-seite/ Gegenspindel-seite	Lubrificazione est. Ext. coolant Ausseinkuehlung	A	A1	D	L	CHIAVI INCLUSE Keys included Schluessel inbegriffen			
											CHSTER20	CHUB36	CHESLO8	
TKW 0760120	ER20	1:1	3500	40Nm	X	X	85.16	-	-	-	CHSTER20	CHUB36	CHESLO8	NEW
TKW 0760125	ER25	1:1	3500	40Nm	X	X	86.16	-	-	-	CHSTER25	CHUB36	CHESLO8	NEW
TKW 0760516	Ø16x17	1:1	3500	40Nm	X	X	-	65	16	17	CH_VTCROCE_M08	CHUB36	CHESLO8	NEW
TKW 0760522	Ø22x19	1:1	3500	40Nm	X	X	-	66	22	19	CH_VTCROCE_M10	CHUB36	CHESLO8	NEW
TKW 0760519	Ø3/4"x3/4"	1:1	3500	40Nm	X	X	-	65	3/4"	3/4"	CH_VTCROCE_M08	CHUB36	CHESLO8	NEW

TAKISAWA
 MOD: NEX315/715 - LS800M - VTL750M - LA350M - LA250YS 12ST.

MODULO MOTORIZZATO ORIENTABILE ±90° H=70mm
 ±90° adjustable angle driven tool H=70mm
 Angetriebenes Werkzeug schwenkbar ±90° H=70mm



M.T. srl
 Via Casino Albini 480
 Tel. 0541/956034-957884
 Fax 0541/956341
 47842 S. GIOVANNI IN M. (RN)
 e-mail: mtma@mtmarchetti.com
 http://www.mtmarchetti.com

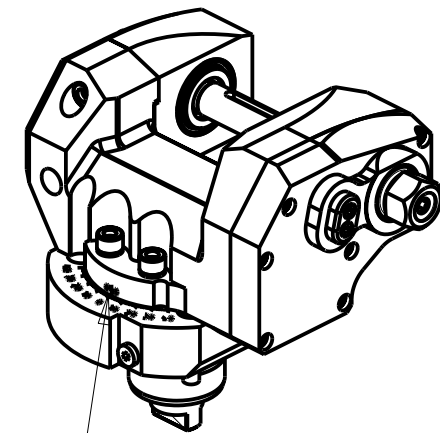
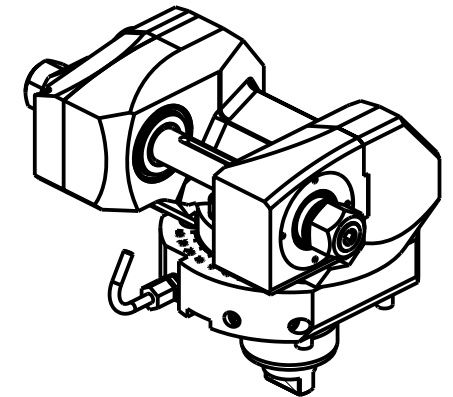
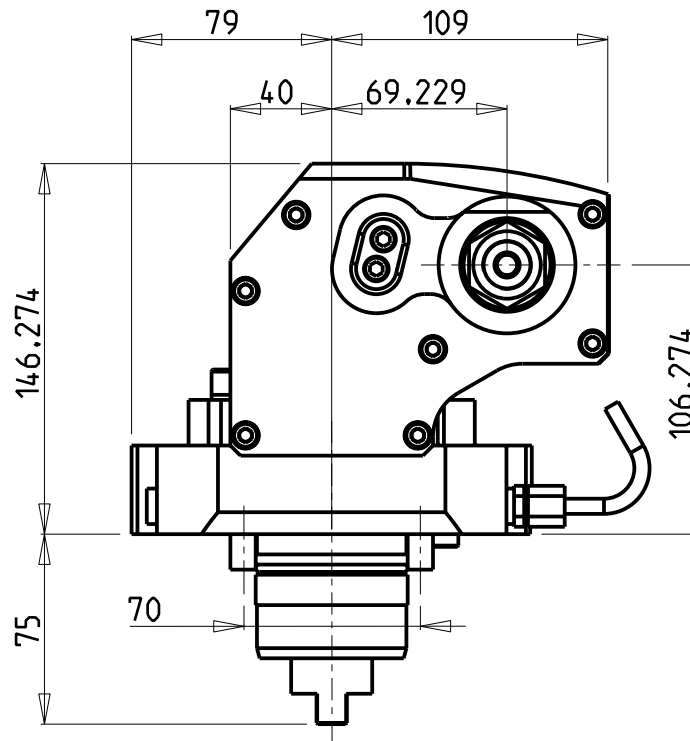
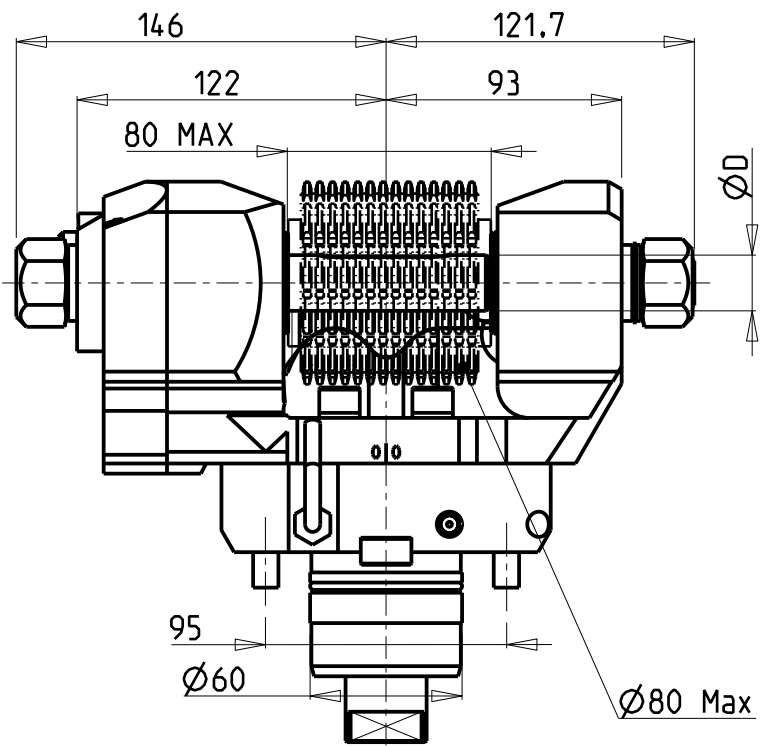
PRODUZIONE MODULI ROTANTI



PAGINA TKW 333-4-00

Subject to change without notice.

10/2018



INCLINAZIONE
REGOLABILE $\pm 40^\circ$

DOTAZIONI - SUPPLIED WITH - AUSSTATTUNG

mm / inch	
	- N°1 ALBERO + DISTANZIALI
	- N°1 SHAFT + SPACER
	- N°1 DORN + ABSTANDSSTUECK

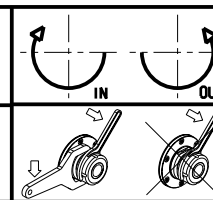
PER ALBERI E DISTANZIALI VEDI PAG. TBL250-1-00
FOR SHAFT END SPACER SEE PAGE TBL250-1-00
FUER DORN UND ABSTANDSSTUECK SEITE TBL250-1-00

Cod. MT	i	RPM max	Coppia Max Max Torque Max Drehmoment	Lubrificazione est. Ext. coolant Aussenkuehlung	D (mm)	D (Inch)	CHIAVI INCLUSE Keys included Schlüssel inbegriffen			
							CHUB30	CHESL08	CHESL10	CHUB24 (Ø16 / Ø3/4")
TKW 0451100	1:1	3500	90Nm	X	16-22-27-32	3/4"-1"-1 1/4"	CHUB30	CHESL08	CHESL10	CHUB24 (Ø16 / Ø3/4")
TKW 0452100	2:1	1750	110Nm	X	16-22-27-32	3/4"-1"-1 1/4"	CHUB30	CHESL08	CHESL10	CHUB24 (Ø16 / Ø3/4")

TAKISAWA
MOD: NEX315/715 - LS800M - VTL750M - LA350M - LA250YS 12ST.

MODULO MOTORIZZATO PORTACREATORE MAGGIORATO
Reinforced driven gear hobber
Angetriebenes Zahnradwaeltzraes-Werkzeug vergroessert

Subject to change without notice.



M.T. srl

Via Casino Albini 480
Tel. 0541/956034-957884
Fax 0541/956341
47842 S. GIOVANNI IN M. (RN)
e-mail: mtma@mtmarchetti.com
http://www.mtmarchetti.com

PRODUZIONE MODULI ROTANTI



PAGINA TKW 340-4-60

10/2018