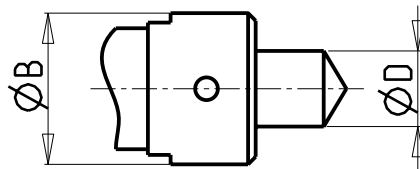


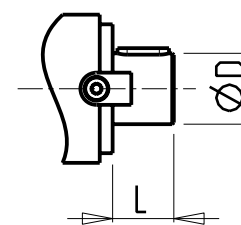
ER

| Grandezza Size Grösse | Dmax. | Dmin. | B |
|-----------------------------|-------|-------|----|
| ERM11 | 7 | 1 | 16 |
| ER16 | 10 | 1 | 28 |
| ERM16 | 10 | 1 | 22 |
| ER20 | 13 | 1 | 35 |
| ERM20 | 13 | 1 | 28 |
| ER25 | 16 | 1 | 42 |
| ERM25 | 16 | 1 | 35 |
| ER32 | 20 | 2 | 50 |
| ER40 | 30 | 3 | 63 |



WELDON

| Grandezza Size Grösse | D | B |
|-----------------------------|----|----|
| Ø8 | 8 | 28 |
| Ø10 | 10 | 30 |
| Ø12 | 12 | 34 |
| Ø16 | 16 | 32 |
| Ø20 | 20 | 42 |
| Ø25 | 25 | 62 |



ALBERO PORTA FRESA

Mill. cut. holder shaft
Fräsdorn

| Grandezza Size Grösse | D | L |
|-----------------------------|-------|-------|
| Ø16x17 | 16 | 17 |
| Ø22x19 | 22 | 19 |
| Ø22x40 | 22 | 40 |
| Ø27x21 | 27 | 21 |
| Ø27x33 | 27 | 33 |
| Ø27x50 | 27 | 50 |
| Ø1"x19 | 25.4 | 19 |
| Ø3/4"x3/4" | 19.05 | 19.05 |

TABELLE

TABELLE DEI MANDRINI
Spindle charts
Tabelle der Spindeln

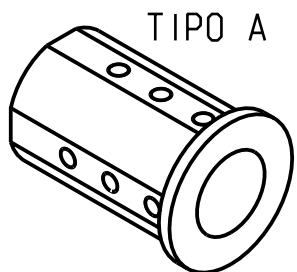
M.T. srl

Via Casino Albini 480
Tel. 0541/956034-957884
Fax 0541/956341
47842 S. GIOVANNI IN M. (RN)
e-mail: mtma@mtmarchetti.com
http://www.mtmarchetti.com

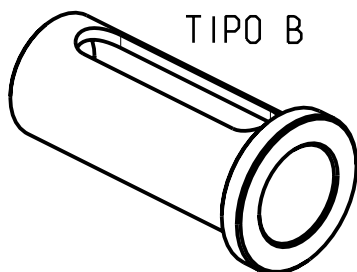
PRODUZIONE MODULI ROTANTI



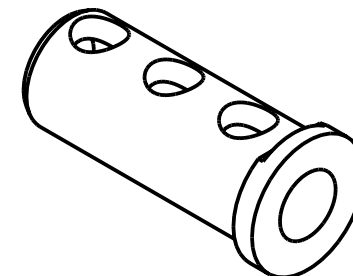
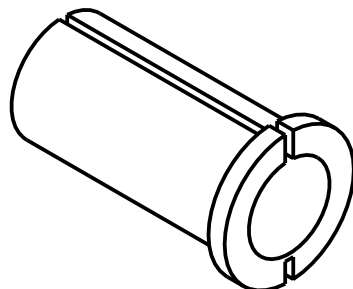
PAGINA TBL100-1-00



TIPO A



TIPO B



BOCCOLE CON GRANI
Bushings with dowel pins
Buchse mit Dubël

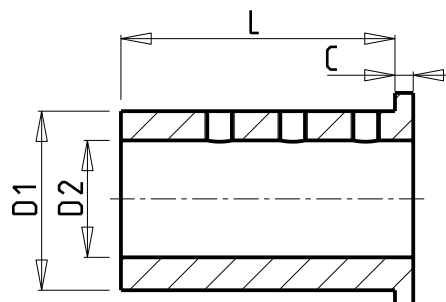
BOCCOLE A DEFORMAZIONE ELASTICA
Elastic deformation bushings
Buchse mit elastischer Deformation

BOCCOLE CON FORI PASSANTI
Bushings with through-hole
Buchse mit Durchgangslocher

| COD. MT | D1 | D2 | L | C | TIPO |
|---------|----|----|-------|---|------|
| BCL5040 | 50 | 40 | 85 | 5 | B |
| BCL5032 | 50 | 32 | 85 | 5 | A |
| BCL4032 | 40 | 32 | 75 | 5 | B |
| BCL4025 | 40 | 25 | 75 | 5 | A |
| BCL4020 | 40 | 20 | 75 | 5 | A |
| BCL4016 | 40 | 16 | 75 | 5 | A |
| BCL4012 | 40 | 12 | 75 | 5 | A |
| BCL4010 | 40 | 10 | 75 | 5 | A |
| BCL4008 | 40 | 8 | 75 | 5 | A |
| BCL3225 | 32 | 25 | 65/70 | 5 | B |
| BCL3220 | 32 | 20 | 65 | 5 | B |
| BCL3216 | 32 | 16 | 65 | 5 | A |
| BCL3212 | 32 | 12 | 65 | 5 | A |
| BCL3210 | 32 | 10 | 65 | 5 | A |
| BCL3208 | 32 | 8 | 65 | 5 | A |
| BCL3206 | 32 | 6 | 65 | 5 | A |
| BCL2520 | 25 | 20 | 65 | 5 | B |
| BCL2516 | 25 | 16 | 65 | 5 | B |
| BCL2512 | 25 | 12 | 60 | 5 | A |
| BCL2510 | 25 | 10 | 60 | 5 | A |
| BCL2508 | 25 | 8 | 60 | 5 | A |
| BCL2506 | 25 | 6 | 60 | 5 | A |

| COD. MT | D1 | D2 | L | C |
|----------|----|----|----|---|
| BCLT3225 | 32 | 25 | 70 | 4 |
| BCLT3216 | 32 | 16 | 55 | 4 |
| BCLT3212 | 32 | 12 | 55 | 4 |
| BCLT3210 | 32 | 10 | 55 | 4 |

| COD. MT | D1 | D2 | L | C |
|---------|------|------|----|---|
| 0440005 | 20 | 16 | 48 | 4 |
| 0440004 | 20 | 12 | 48 | 4 |
| 0440003 | 20 | 10 | 48 | 4 |
| 0440002 | 20 | 8 | 48 | 4 |
| 0440001 | 20 | 6 | 48 | 4 |
| 0440024 | 3/4" | 1/2" | 48 | 4 |
| 0440023 | 3/4" | 3/8" | 48 | 4 |
| 0440021 | 3/4" | 1/4" | 48 | 4 |



LE BOCCOLE VENGONO FORNITE SU RICHIESTA A CORREDO DEL PORTAUTENSILE
Bushings can be supplied with toolholder orders on request
Die Buchsen werden auf Anfrage, zusätzlich geliefert

TABELLE

TABELLE BOCCOLE DI RIDUZIONE
Bushing charts
Reduzierbuchsen -Tabelle

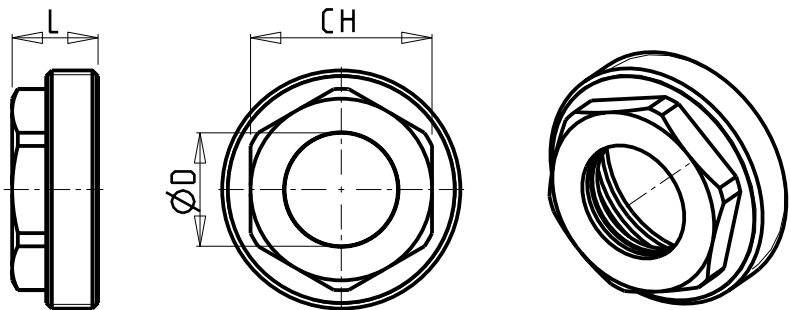
M.T. srl

Via Casino Albini 480
Tel. 0541/956034-957884
Fax 0541/956341
47842 S. GIOVANNI IN M. (RN)
e-mail: mtma@mtmarchetti.com
http://www.mtmarchetti.com

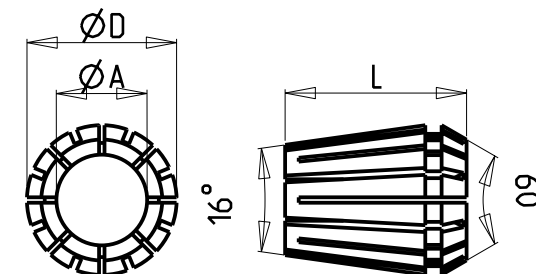
PRODUZIONE MODULI ROTANTI



PAGINA TBL150-1-00



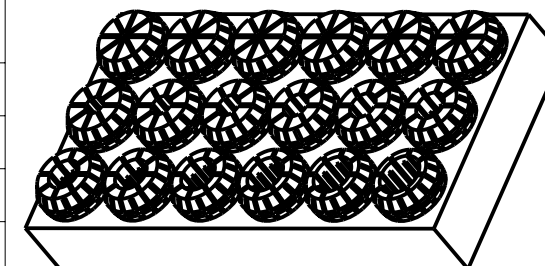
| PINZE ERG-DIN 6499/B | | | | |
|------------------------|-------------|------|------|----------------------|
| DIN 6499-B ERG COLLETS | | | | |
| TIPO type | A | D | L | ESPANSIONE expansion |
| ERG-11 | 1-7 | 11.5 | 18.0 | mm 0.5 |
| ERG-16 | 1-3 4-10 | 17.0 | 27.5 | mm 0.5 mm 1.0 |
| ERG-20 | 1-3 4-13 | 21.0 | 31.5 | mm 0.5 mm 1.0 |
| ERG-25 | 1-3 4-16 | 26.0 | 34.0 | mm 0.5 mm 1.0 |
| ERG-32 | 2-20 | 33.0 | 40.0 | mm 1.0 |
| ERG-40 | 3-30 | 41.0 | 46.0 | mm 1.0 |
| ERG-50 | 6-34 | 52.0 | 60.0 | mm 2.0 |



SERIE DI GHIERE ERA REFRIGERAZIONE INTERNA PER PINZE DIN 6499/B
COOLANT TROUGH ERA CLAMPING-NUTS SET FOR DIN 6499/B COLLETS

| CODICE KIT | TIPO type | ØD | L | CH | n° GHIERE n° clamping-nuts |
|--------------|-----------|-----------------|-------|----|----------------------------|
| KITGHTA2000E | ERA-20 | 6-8-10-12 | 13.1 | 22 | 4 |
| KITGHTA2500E | ERA-25 | 6-8-10-12-16 | 14.0 | 27 | 5 |
| KITGHTA3200E | ERA-32 | 6-8-10-12-16-20 | 15.15 | 32 | 6 |
| KITGHTA4000E | ERA-40 | 8-10-12-16-20 | 16.1 | 42 | 5 |
| KITGHTA5000E | ERA-50 | 8-10-12-16-20 | 27.4 | 50 | 5 |

| SERIE DI PINZE ERG-DIN 6499/B | | | |
|-------------------------------|-----------|--------------------|---------------------|
| DIN-6499/B ERG COLLETS SET | | | |
| CODICE KIT | TIPO type | CAPACITA' capacity | n° PINZE n° collets |
| KITPINZEER11 | ERG-11 | da Ø1 a Ø7 | 13 |
| KITPINZEER16 | ERG-16 | da Ø1 a Ø10 | 10 |
| KITPINZEER20 | ERG-20 | da Ø2 a Ø13 | 12 |
| KITPINZEER25 | ERG-25 | da Ø2 a Ø16 | 15 |
| KITPINZEER32 | ERG-32 | da Ø3 a Ø20 | 18 |
| KITPINZEER40 | ERG-40 | da Ø4 a Ø26 | 23 |



TABELLE

PINZE ERG-DIN 6499/B
 DIN 6499/B ERG Collets
 DIN 6499/B ERG Collets

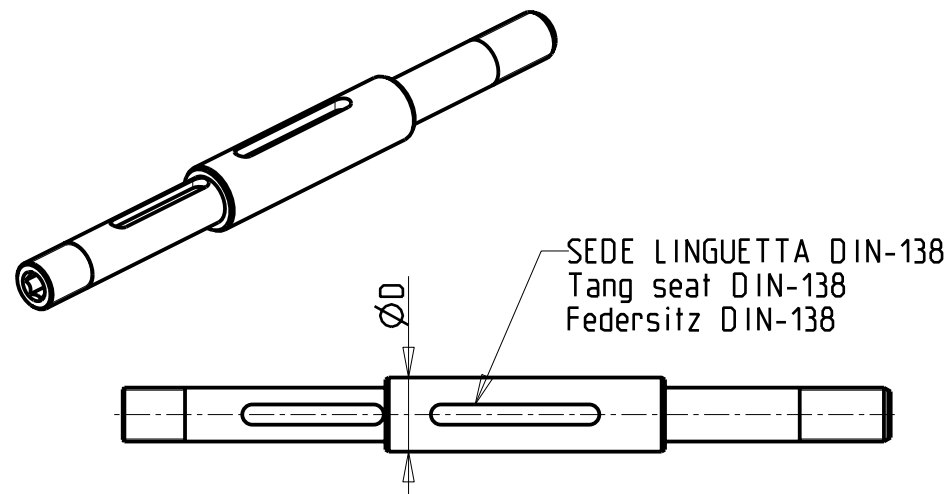
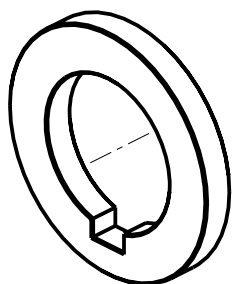
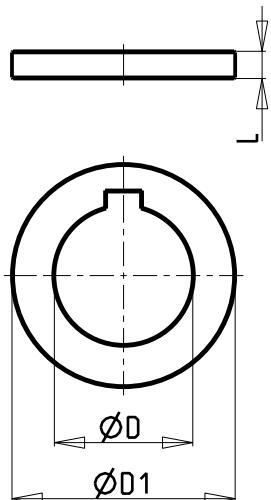
M.T. srl
 Via Casino Albini 480
 Tel. 0541/956034-957884
 Fax 0541/956341
 47842 S. GIOVANNI IN M. (RN)
 e-mail: mtma@mtmarchetti.com
 http://www.mtmarchetti.com

PRODUZIONE MODULI ROTANTI



PAGINA TBL200-1-00

| COD. MT | D | D1 | L |
|----------------|--------|----|----|
| DIST_D16_L2 | 16 | 27 | 2 |
| DIST_D16_L5 | 16 | 27 | 5 |
| DIST_D16_L10 | 16 | 27 | 10 |
| DIST_D16_L20 | 16 | 27 | 20 |
| DIST_D22_L2 | 22 | 34 | 2 |
| DIST_D22_L5 | 22 | 34 | 5 |
| DIST_D22_L10 | 22 | 34 | 10 |
| DIST_D22_L20 | 22 | 34 | 20 |
| DIST_D27_L2 | 27 | 41 | 2 |
| DIST_D27_L5 | 27 | 41 | 5 |
| DIST_D27_L10 | 27 | 41 | 10 |
| DIST_D27_L20 | 27 | 41 | 20 |
| DIST_D32_L2 | 32 | 47 | 2 |
| DIST_D32_L3 | 32 | 47 | 3 |
| DIST_D32_L5 | 32 | 47 | 5 |
| DIST_D32_L10 | 32 | 47 | 10 |
| DIST_D1905_L2 | 3/4" | 34 | 2 |
| DIST_D1905_L5 | 3/4" | 34 | 5 |
| DIST_D1905_L10 | 3/4" | 34 | 10 |
| DIST_D1905_L20 | 3/4" | 34 | 20 |
| DIST_D2540_L2 | 1" | 41 | 2 |
| DIST_D2540_L5 | 1" | 41 | 5 |
| DIST_D2540_L10 | 1" | 41 | 10 |
| DIST_D2540_L20 | 1" | 41 | 20 |
| DIST_D3175_L2 | 1-1/4" | 47 | 2 |
| DIST_D3175_L5 | 1-1/4" | 47 | 5 |
| DIST_D3175_L10 | 1-1/4" | 47 | 10 |
| DIST_D3175_L20 | 1-1/4" | 47 | 20 |
| DIST_D3810_L2 | 1-1/2" | 54 | 2 |
| DIST_D3810_L5 | 1-1/2" | 54 | 5 |
| DIST_D3810_L10 | 1-1/2" | 54 | 10 |
| DIST_D3810_L20 | 1-1/2" | 54 | 20 |



| PORTACREATORE STANDARD Driven gear hobber Zahnradwaelzfraes-Werkzeug | |
|--|--------|
| COD. MT | D |
| 0100106 | 16 |
| 0100105 | 22 |
| 0100104 | 27 |
| 0100107 | 32 |
| 0100108 | 3/4" |
| 0100109 | 1" |
| 0100110 | 1 1/4" |

| PORTACREATORE MAGGIORATO Reinforced driven gear hobber Vergroesserter Zahnradwaelzfraes-Werkzeug | |
|--|--------|
| COD. MT | D |
| MNL0410030 | 16 |
| MNL0410004 | 22 |
| MNL0410005 | 27 |
| MNL0410006 | 32 |
| MNL0410031 | 3/4" |
| MNL0410027 | 1" |
| MNL0410032 | 1 1/4" |

| PORTACREATORE TAGLIA GRANDE Driven gear hobber (big size) Zahnradwaelzfraes-Werkzeug (grosse version) | |
|---|--------|
| COD. MT | D |
| DW00810025 | 22 |
| DW00810026 | 27 |
| DW00810027 | 32 |
| DW00810029 | 1" |
| DW00810030 | 1 1/4" |
| DW00810031 | 1 1/2" |

TABELLE

TABELLE DISTANZIALI E ALBERI PER PORTACREATORE

Shaft and spacer for driven gear hobber charts

Dorne und Abstandsstuecke Tabelle fuer Zahnradwaelzfraeser

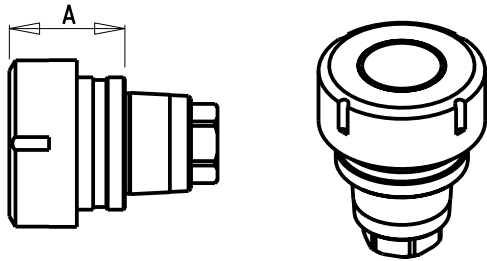
M.T. srl

Via Casino Albini 480
Tel. 0541/956034-957884
Fax 0541/956341
47842 S. GIOVANNI IN M. (RN)
e-mail: mtma@mtmarchetti.com
http://www.mtmarchetti.com

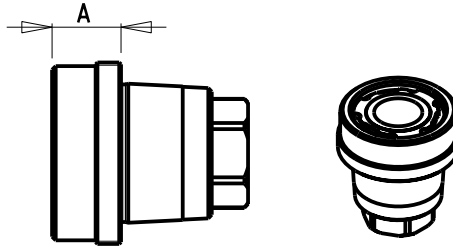
PRODUZIONE MODULI ROTANTI



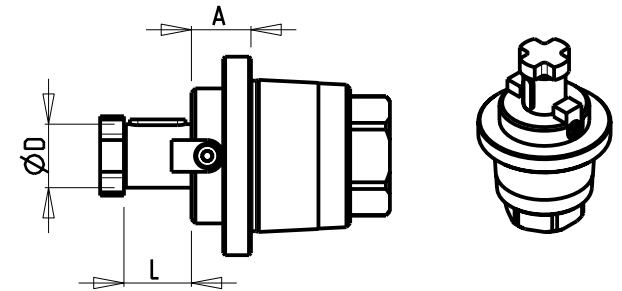
PAGINA TBL250-1-00



| Cod. MT | Mandrino Spindle Spindel | A |
|-----------|--------------------------|------|
| MTSK32A03 | ER25 | 31.7 |

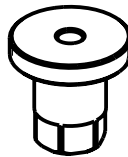


| Cod. MT | Mandrino Spindle Spindel | A |
|-----------|--------------------------|----|
| MTSK32B03 | ERA20 | 19 |
| MTSK32B04 | ERA16 | 13 |



| Cod. MT | Mandrino Spindle Spindel | Misure Dimensions Masse | A | D | L |
|-----------|--------------------------|-------------------------|----|----|----|
| MTSK32C02 | Ø16x17 | mm | 14 | 16 | 17 |

| Cod. MT | |
|-----------|---------------------|
| MTSK32T00 | Tappo di protezione |
| | Cover Plug |
| | Abdeckstopfen |



TABELLE

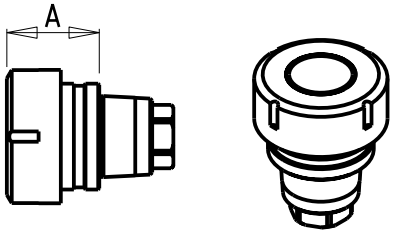
TABELLE PORTAUTENSILI MODULARI MTSK-32
 MTSK-32 quick change toolholders clampings chart
 MTSK-32 modulare Werkzeugaufnahmen tabelle

M.T. srl
 Via Casino Albini 480
 Tel. 0541/956034-957884
 Fax 0541/956341
 47842 S. GIOVANNI IN M. (RN)
 e-mail: mtma@mtmarchetti.com
 http://www.mtmarchetti.com

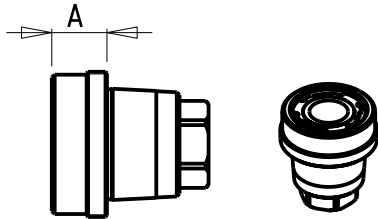
PRODUZIONE MODULI ROTANTI



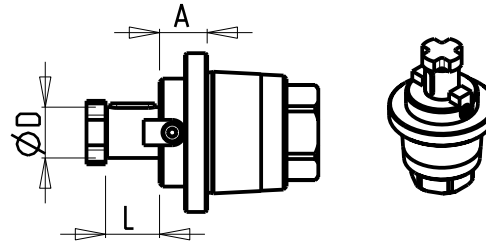
PAGINA TBL300-1-32



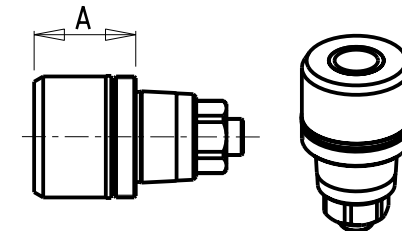
| Cod. MT | Mandrino Spindle Spindel | A |
|-----------|--------------------------|------|
| MTSK40A02 | ER32 | 35.6 |
| MTSK40A03 | ER25 | 32.6 |



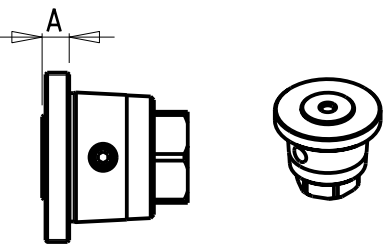
| Cod. MT | Mandrino Spindle Spindel | A |
|-----------|--------------------------|----|
| MTSK40B02 | ERA25 | 16 |
| MTSK40B03 | ERA20 | 14 |



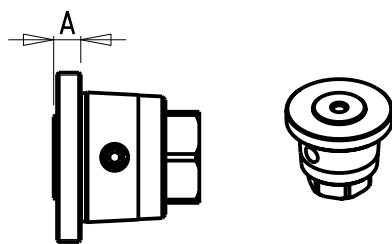
| Cod. MT | Mandrino Spindle Spindel | Misure Dimensions Masse | A | D | L |
|-----------|--------------------------|-------------------------|------|------|------|
| MTSK40C02 | Ø16x17 | mm | 15 | 16 | 17 |
| MTSK40C03 | Ø3/4"x3/4" | Inch | 15.5 | 3/4" | 3/4" |
| MTSK40C04 | Ø22x19 | mm | 17 | 22 | 19 |
| MTSK40C05 | Ø27x21 | mm | 22 | 27 | 21 |



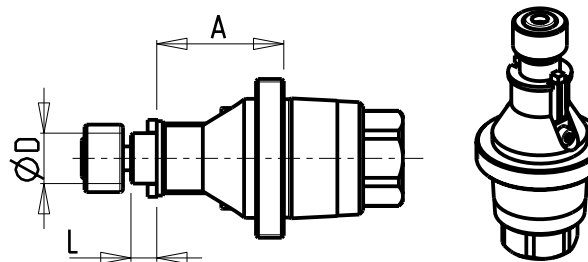
| Cod. MT | Mandrino Spindle Spindel | A |
|-----------|--------------------------|------|
| MTSK40G03 | MR25 | 33.6 |



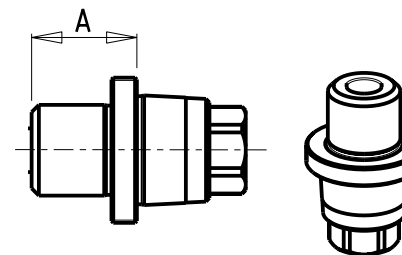
| Cod. MT | Mandrino Spindle Spindel | A |
|-----------|--------------------------|------|
| MTSK40D01 | WELDON 6 | 8 |
| MTSK40D21 | WELDON 6 | 27.5 |
| MTSK40D02 | WELDON 8 | 8 |
| MTSK40D03 | WELDON 10 | 9 |
| MTSK40D04 | WELDON 12 | 14 |
| MTSK40D06 | WELDON 16 | 39.5 |
| MTSK40D07 | WELDON 20 | 39.5 |



| Cod. MT | Mandrino Spindle Spindel | A |
|-----------|--------------------------|----|
| MTSK40D11 | WELDON 1/4" | 8 |
| MTSK40D12 | WELDON 5/16" | 8 |
| MTSK40D13 | WELDON 3/8" | 9 |
| MTSK40D14 | WELDON 1/2" | 14 |

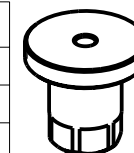


| Cod. MT | Mandrino Spindle Spindel | Misure Dimensions Masse | A | D | L |
|-----------|--------------------------|-------------------------|----|------|-----|
| MTSK40F01 | Ø 1/2" | Inch | 32 | 1/2" | 6.5 |



| Cod. MT | Mandrino Spindle Spindel | A |
|-----------|--------------------------|----|
| MTSK40H01 | MORSE-1 | 29 |
| MTSK40H02 | MORSE-2 | 42 |

| Cod. MT | |
|-----------|---------------------|
| MTSK40T00 | Tappo di protezione |
| | Cover Plug |
| | Abdeckstopfen |



TABELLE

TABELLE PORTAUTENSILI MODULARI MTSK-40
 MTSK-40 quick change toolholders clampings chart
 MTSK-40 modulare Werkzeugaufnahmen tabelle

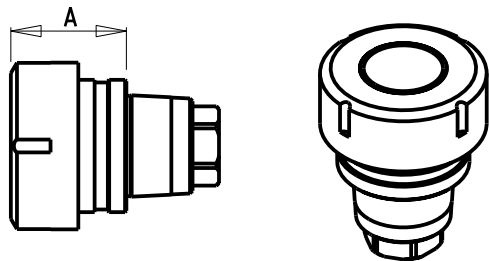
M.T. srl

Via Casino Albini 480
 Tel. 0541/956034-957884
 Fax 0541/956341
 47842 S. GIOVANNI IN M. (RN)
 e-mail: mtma@tmarchetti.com
 http://www.tmmarchetti.com

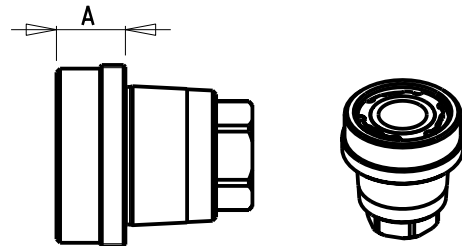
PRODUZIONE MODULI ROTANTI



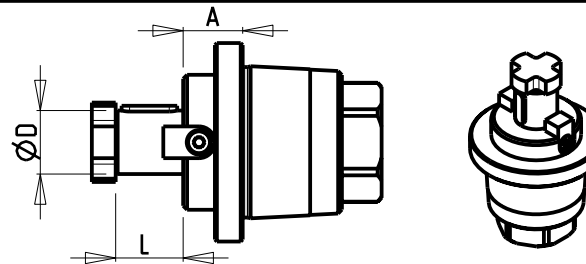
PAGINA TBL300-1-40



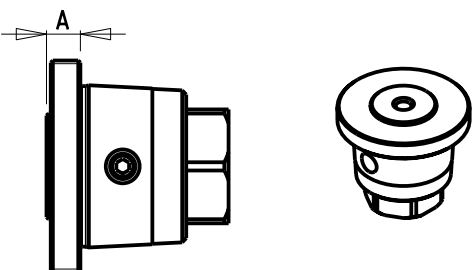
| Cod. MT | Mandrino Spindle Spindel | A |
|-----------|--------------------------|------|
| MTSK50A01 | ER40 | 46.6 |
| MTSK50A02 | ER32 | 35.6 |
| MTSK50A03 | ER25 | 32.6 |



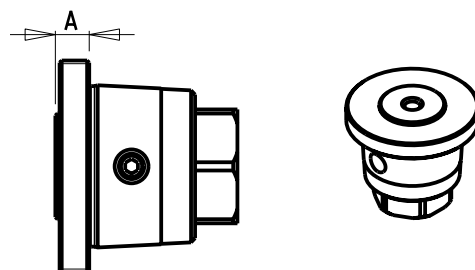
| Cod. MT | Mandrino Spindle Spindel | A |
|-----------|--------------------------|----|
| MTSK50B01 | ERA32 | 19 |
| MTSK50B02 | ERA25 | 14 |
| MTSK50B03 | ERA20 | 9 |



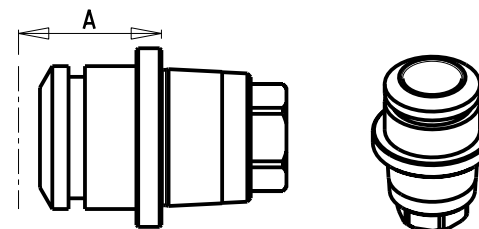
| Cod. MT | Mandrino Spindle Spindel | Misure Dimensions Masse | A | D | L |
|-----------|--------------------------|-------------------------|------|------|------|
| MTSK50C02 | Ø16x17 | mm | 15 | 16 | 17 |
| MTSK50C03 | Ø3/4"x3/4" | Inch | 15.5 | 3/4" | 3/4" |
| MTSK50C04 | Ø22x19 | mm | 17 | 22 | 19 |
| MTSK50C05 | Ø1"x3/4" | Inch | 19 | 1" | 3/4" |
| MTSK50C06 | Ø27x21 | mm | 19 | 27 | 21 |



| Cod. MT | Mandrino Spindle Spindel | A |
|-----------|--------------------------|----|
| MTSK50D01 | WELDON 6 | 8 |
| MTSK50D02 | WELDON 8 | 8 |
| MTSK50D03 | WELDON 10 | 8 |
| MTSK50D04 | WELDON 12 | 9 |
| MTSK50D05 | WELDON 16 | 12 |
| MTSK50D07 | WELDON 20 | 40 |
| MTSK50D08 | WELDON 25 | 44 |

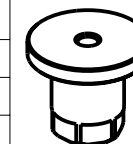


| Cod. MT | Mandrino Spindle Spindel | A |
|-----------|--------------------------|----|
| MTSK50D11 | WELDON 1/4" | 8 |
| MTSK50D12 | WELDON 5/16" | 8 |
| MTSK50D13 | WELDON 3/8" | 8 |
| MTSK50D14 | WELDON 1/2" | 9 |
| MTSK50D15 | WELDON 5/8" | 12 |



| Cod. MT | Mandrino Spindle Spindel | A |
|-----------|--------------------------|----|
| MTSK50E01 | POWRGRIP® PG25 | 40 |

| Cod. MT | |
|-----------|---------------------|
| MTSK50T00 | Tappo di protezione |
| | Cover Plug |
| | Abdeckstopfen |



TABELLE

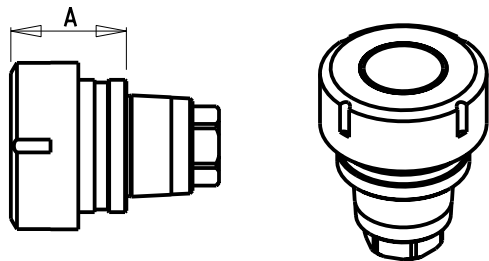
TABELLE PORTAUTENSILI MODULARI MTSK-50
 MTSK-50 quick change toolholders clampings chart
 MTSK-50 modulare Werkzeugaufnahmen tabelle

M.T. srl
 Via Casino Albini 480
 Tel. 0541/956034-957884
 Fax 0541/956341
 47842 S. GIOVANNI IN M. (RN)
 e-mail: mtma@mtmarchetti.com
 http://www.mtmarchetti.com

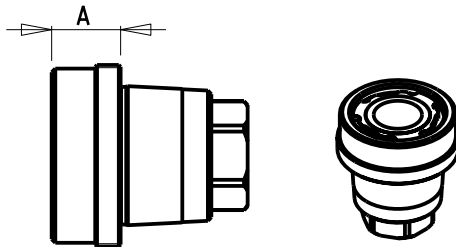
PRODUZIONE MODULI ROTANTI



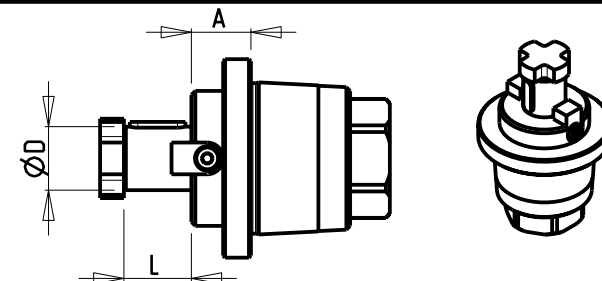
PAGINA TBL300-1-50



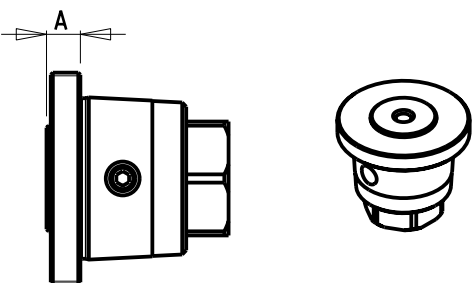
| Cod. MT | Mandrino Spindle Spindel | A |
|-----------|--------------------------|------|
| MTSK63A01 | ER50 | 53.9 |
| MTSK63A02 | ER40 | 39.6 |
| MTSK63A03 | ER32 | 36.6 |
| MTSK63A04 | ER25 | 33.6 |



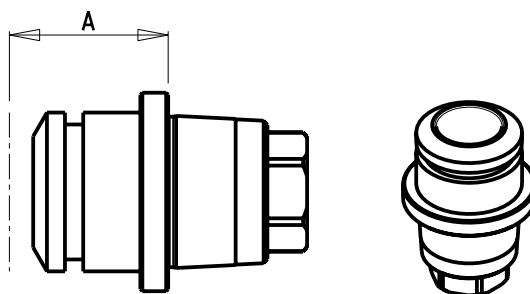
| Cod. MT | Mandrino Spindle Spindel | A |
|-----------|--------------------------|----|
| MTSK63B01 | ERA40 | 20 |
| MTSK63B02 | ERA32 | 18 |
| MTSK63B03 | ERA25 | 10 |



| Cod. MT | Mandrino Spindle Spindel | Misure Dimensions Masse | A | D | L |
|-----------|--------------------------|-------------------------|------|------|------|
| MTSK63C02 | Ø16x17 | mm | 16 | 16 | 17 |
| MTSK63C03 | Ø3/4"x3/4" | Inch | 16.5 | 3/4" | 3/4" |
| MTSK63C04 | Ø22x19 | mm | 18 | 22 | 19 |
| MTSK63C05 | Ø1"x3/4" | Inch | 20 | 1" | 3/4" |
| MTSK63C06 | Ø27x21 | mm | 20 | 27 | 21 |

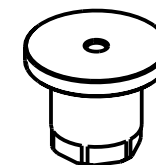


| Cod. MT | Mandrino Spindle Spindel | A |
|-----------|--------------------------|----|
| MTSK63D01 | WELDON 6 | 9 |
| MTSK63D02 | WELDON 8 | 9 |
| MTSK63D03 | WELDON 10 | 9 |
| MTSK63D04 | WELDON 12 | 10 |
| MTSK63D05 | WELDON 16 | 12 |
| MTSK63D06 | WELDON 20 | 14 |
| MTSK63D17 | WELDON 1" | 14 |



| Cod. MT | Mandrino Spindle Spindel | A |
|-----------|--------------------------|----|
| MTSK63E01 | POWRGRIP® PG32 | 53 |

| Cod. MT | |
|-----------|---------------------|
| MTSK63T00 | Tappo di protezione |
| | Cover Plug |
| | Abdeckstopfen |



TABELLE

TABELLE PORTAUTENSILI MODULARI MTSK-63
 MTSK-63 quick change toolholders clampings chart
 MTSK-63 modulare Werkzeugaufnahmen tabelle

M.T. srl
 Via Casino Albini 480
 Tel. 0541/956034-957884
 Fax 0541/956341
 47842 S. GIOVANNI IN M. (RN)
 e-mail: mtma@mtmarchetti.com
 http://www.mtmarchetti.com

PRODUZIONE MODULI ROTANTI



PAGINA TBL300-1-63

POWRGRIP® PG25

| COD. MT | D (mm) | D (inch) | D (inch) |
|-----------|--------|----------|----------|
| PG2503000 | 3 | 0.1181 | - |
| PG2503181 | 3.175 | 0.1250 | 1/8" |
| PG2504000 | 4 | 0.1575 | - |
| PG2504761 | 4.763 | 0.1875 | 3/16" |
| PG2505000 | 5 | 0.1969 | - |
| PG2506000 | 6 | 0.2362 | - |
| PG2506351 | 6.350 | 0.2500 | 1/4" |
| PG2507000 | 7 | 0.2756 | - |
| PG2507941 | 7.938 | 0.3125 | 5/16" |
| PG2508000 | 8 | 0.3150 | - |
| PG2509000 | 9 | 0.3543 | - |
| PG2509521 | 9.525 | 0.3750 | 3/8" |
| PG2510000 | 10 | 0.3937 | - |
| PG2511000 | 11 | 0.4331 | - |
| PG2511111 | 11.113 | 0.4375 | 7/16" |
| PG2512000 | 12 | 0.4724 | - |
| PG2512701 | 12.7 | 0.5000 | 1/2" |
| PG2514000 | 14 | 0.5512 | - |
| PG2514291 | 14.288 | 0.5625 | 9/16" |
| PG2515881 | 15.875 | 0.6250 | 5/8" |
| PG2516000 | 16 | 0.6300 | - |
| PG2518000 | 18 | 0.7087 | - |
| PG2519051 | 19.050 | 0.7500 | 3/4" |
| PG2520000 | 20 | 0.7874 | - |

POWRGRIP® PG32

| COD. MT | D (mm) | D (inch) | D (inch) |
|-----------|--------|----------|----------|
| PG3206000 | 6 | 0.2362 | - |
| PG3206351 | 6.350 | 0.2500 | 1/4" |
| PG3207000 | 7 | 0.2756 | - |
| PG3207941 | 7.938 | 0.3125 | 5/16" |
| PG3208000 | 8 | 0.3150 | - |
| PG3209000 | 9 | 0.3543 | - |
| PG3209521 | 9.525 | 0.3750 | 3/8" |
| PG3210000 | 10 | 0.3937 | - |
| PG3211000 | 11 | 0.4331 | - |
| PG3211111 | 11.113 | 0.4375 | 7/16" |
| PG3212000 | 12 | 0.4724 | - |
| PG3212701 | 12.7 | 0.5000 | 1/2" |
| PG3214000 | 14 | 0.5512 | - |
| PG3214291 | 14.288 | 0.5625 | 9/16" |
| PG3215881 | 15.875 | 0.6250 | 5/8" |
| PG3216000 | 16 | 0.6300 | - |
| PG3218000 | 18 | 0.7087 | - |
| PG3219051 | 19.050 | 0.7500 | 3/4" |
| PG3220000 | 20 | 0.7874 | - |
| PG3222000 | 22 | 0.8661 | - |
| PG3222231 | 22.225 | 0.8750 | 7/8" |
| PG3225000 | 25 | 0.9843 | - |
| PG3225401 | 25.400 | 1 | 1" |

TABELLE

TABELLE PINZE POWRGRIP®
PowRgrip® collets charts
PowRgrip® Spannzangen Tabelle

M.T. srl

Via Casino Albini 480
Tel. 0541/956034-957884
Fax 0541/956341
47842 S. GIOVANNI IN M. (RN)
e-mail: mtma@mtmarchetti.com
<http://www.mtmarchetti.com>

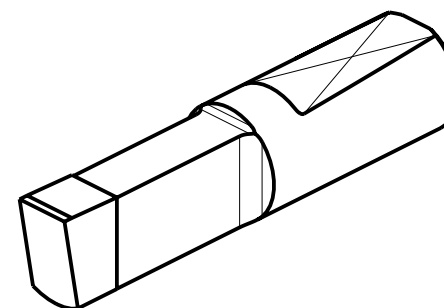
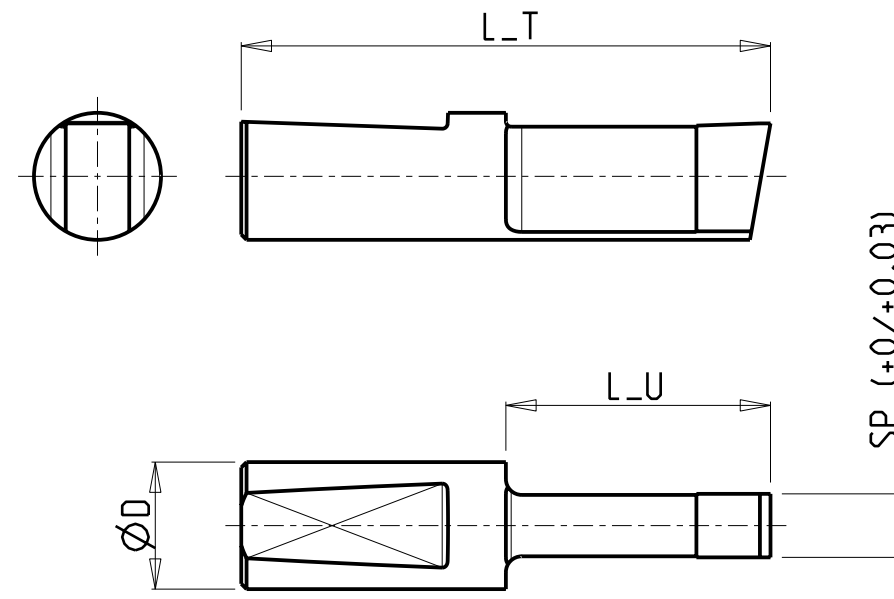
PRODUZIONE MODULI ROTANTI



PAGINA TBL350-1-00

| COD. MT | D (mm) | SP (mm) | L_U (mm) | L_T (mm) |
|------------|--------|---------|----------|----------|
| MNL0651001 | 12.000 | 4.000 | 20.000 | 45.000 |
| MNL0651002 | 12.000 | 5.000 | 25.000 | 50.000 |
| MNL0651003 | 12.000 | 6.000 | 25.000 | 50.000 |
| MNL0651004 | 12.000 | 6.000 | 35.000 | 60.000 |
| MNL0651005 | 12.000 | 6.000 | 50.000 | 75.000 |
| MNL0651006 | 16.000 | 8.000 | 25.000 | 50.000 |
| MNL0651007 | 16.000 | 10.000 | 30.000 | 55.000 |
| MNL0651008 | 16.000 | 12.000 | 30.000 | 55.000 |
| MNL0651009 | 12.000 | 3.000 | 25.000 | 50.000 |
| MNL0651010 | 16.000 | 8.000 | 50.000 | 75.000 |
| MNL0651011 | 16.000 | 10.000 | 36.000 | 61.000 |
| MNL0651012 | 16.000 | 10.000 | 50.000 | 75.000 |
| MNL0651013 | 16.000 | 7.000 | 25.000 | 50.000 |
| MNL0651014 | 12.000 | 5.000 | 50.000 | 75.000 |

| COD. MT | D (mm) | SP (inch) | L_U (mm) | L_T (mm) |
|------------|--------|-----------|----------|----------|
| MNL0652001 | 12.000 | 1/8" | 20.000 | 45.000 |
| MNL0652002 | 12.000 | 3/16" | 25.000 | 50.000 |
| MNL0652003 | 12.000 | 1/4" | 25.000 | 50.000 |
| MNL0652004 | 16.000 | 5/16" | 25.000 | 50.000 |
| MNL0652005 | 16.000 | 3/8" | 30.000 | 55.000 |
| MNL0652006 | 16.000 | 1/2" | 30.000 | 55.000 |
| MNL0652007 | 12.000 | 3/16" | 50.000 | 75.000 |



TABELLE

TABELLE UTENSILI PER STOZZATORE
Driven slotting tool cutting-tools charts
Nufentoss-Werkzeug schneidewerkzeuge -Tabelle

M.T. srl

Via Casino Albini 480
Tel. 0541/956034-957884
Fax 0541/956341
47842 S. GIOVANNI IN M. (RN)
e-mail: mtma@mtmarchetti.com
<http://www.mtmarchetti.com>

PRODUZIONE MODULI ROTANTI



PAGINA TBL400-1-00