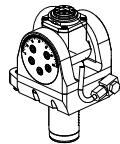
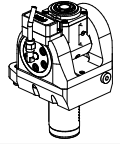
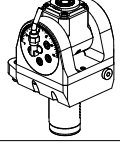
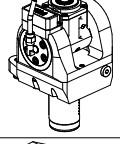
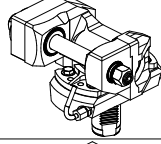
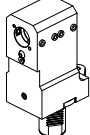
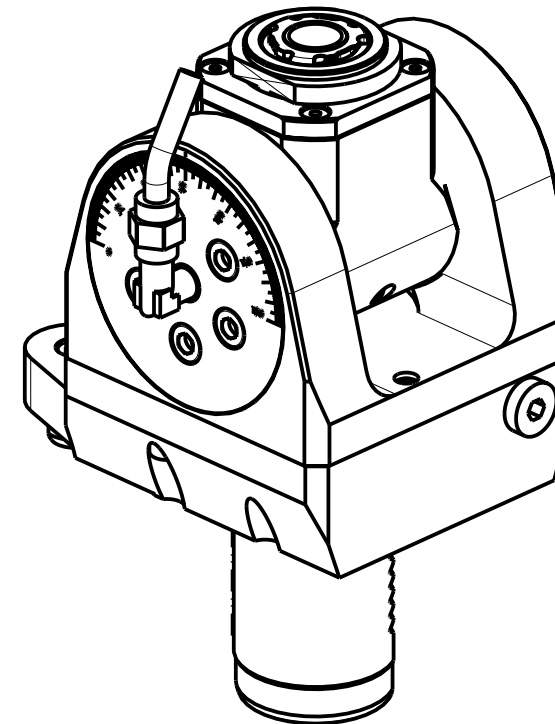
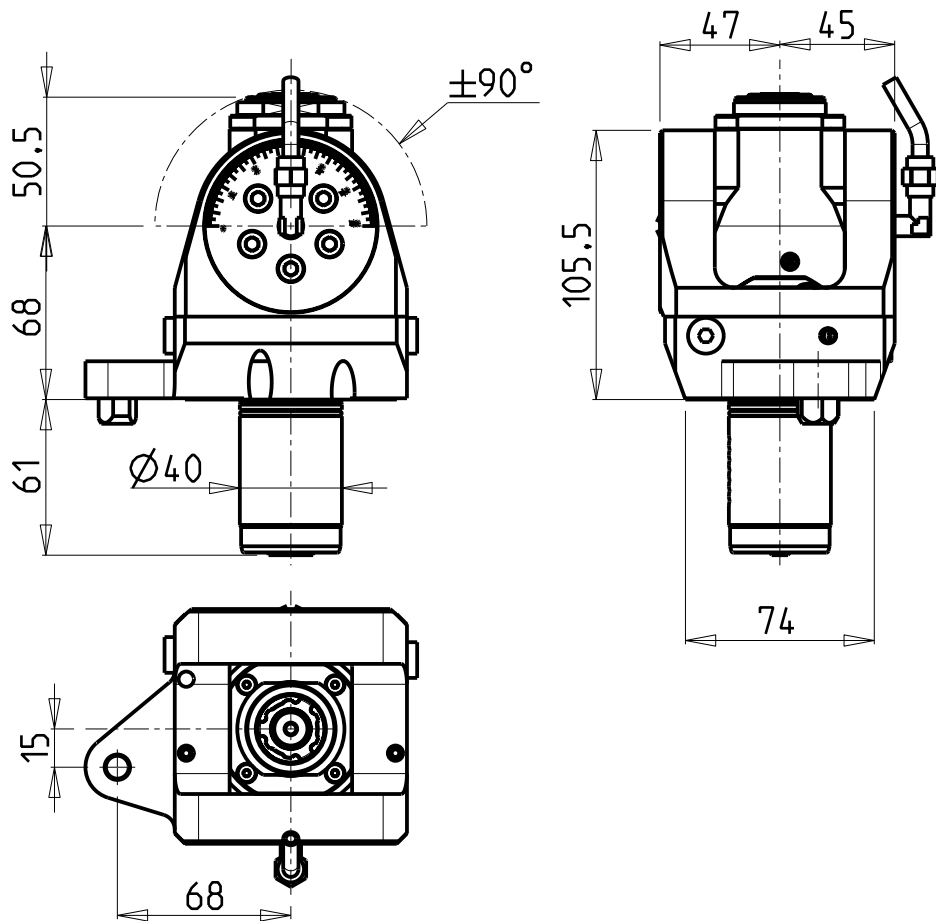


		PAGINA Page Seite
<p><b>MODULO MOTORIZZATO ORIENTABILE <math>\pm 90^\circ</math></b>  <math>\pm 90^\circ</math> adjustable angle driven tool                      Angetriebenes Werkzeug schwenkbar <math>\pm 90^\circ</math></p>		MZK335.2.00
<p><b>MODULO MOTORIZZATO ORIENTABILE <math>\pm 90^\circ</math> CON NONIO DIGITALE</b>  <math>\pm 90^\circ</math> adjustable angle driven tool with digital display                      Angetriebenes Werkzeug schwenkbar <math>\pm 90^\circ</math> mit digital display</p>		MZK335.2.01
<p><b>MODULO MOTORIZZATO ORIENTABILE <math>\pm 90^\circ</math> MOLTIPLICATO l=1:2</b>  <math>\pm 90^\circ</math> adjustable angle driven tool geared-up l=1:2                      Angetriebenes Werkzeug schwenkbar <math>\pm 90^\circ</math> uebersetzt l=1:2</p>		MZK336.2.00
<p><b>MODULO MOTOR. ORIENTABILE <math>\pm 90^\circ</math> MOLTIPL. l=1:2 CON NONIO DIGITALE</b>  <math>\pm 90^\circ</math> adjustable angle driven tool geared-up l=1:2 with digital display                      Angetriebenes Werkzeug schwenkbar <math>\pm 90^\circ</math> uebersetzt l=1:2 mit digital display</p>		MZK336.2.01
<p><b>MODULO MOTORIZZATO PORTACREATORE</b>                      Driven gear hobber                      Angetriebenes Zahnradwaelzfraes-Werkzeug</p>		MZK340.2.00
<p><b>PORTAUTENSILE ASSIALE PER BARENO <math>\varnothing 32\text{mm}</math> / <math>\varnothing 1\ 1/4"</math> H=130mm</b>                      Axial single boring bar holder <math>\varnothing 32\text{mm}</math> / <math>\varnothing 1\ 1/4"</math> H=130mm                      Axial Bohrhalter <math>\varnothing 32\text{mm}</math> / <math>\varnothing 1\ 1/4"</math> H=130mm</p>		MZK650.2.10





Cod. MT	Mandrino Spindle Spindel	I	RPM	Coppia Max Max Torque Max Drehmoment	Lubrificazione int. Coolant through Innenkuehlung	Lubrificazione est. Ext. coolant Aussenkuehlung	CHIAVI INCLUSE Keys included Schluessel inbegriffen		
							C HUB36	C HUB22	C HTAER20ZC
MZK0260120	ER A 20	1:1	6000	30Nm		X	C HUB36	C HUB22	C HTAER20ZC
MZK0260220	ER A 20	1:1	6000	30Nm	P=70bar	X	C HUB36	C HUB22	C HTAER20ZC

**MAZAK**

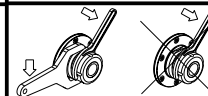
SQT 15-18M/MS/MY/MSY 16 STAZ. - QT NEXUS 200-250M/MS/MY/MSY 16 STAZ. - QT NEXUS 20011-25011 M/MS/MY/MSY 16 STAZ.  
 QT NEXUS 100-150M/MS 12 STAZ. - QT NEXUS 10011 M/MS - SQT100M/MS/MY/MSY - SQT10M/MS 12 STAZ. - SQT200-250M/MS/MY/MSY 16 ST.

**MODULO MOTORIZZATO ORIENTABILE ±90°**

±90° adjustable angle driven tool

Angetriebenes Werkzeug schwenkbar ±90°

Subject to change without notice.



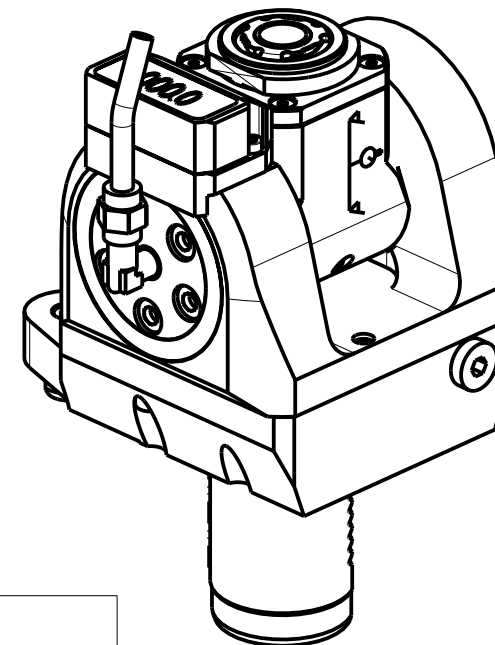
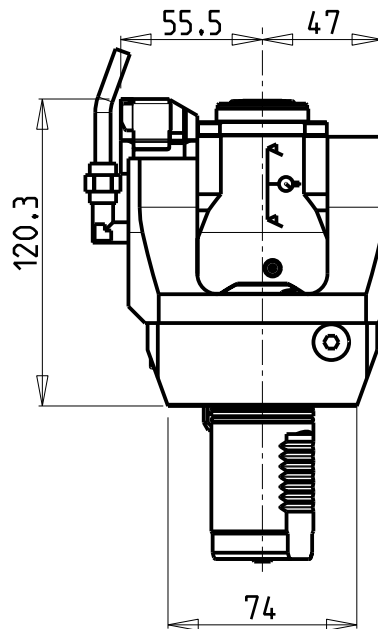
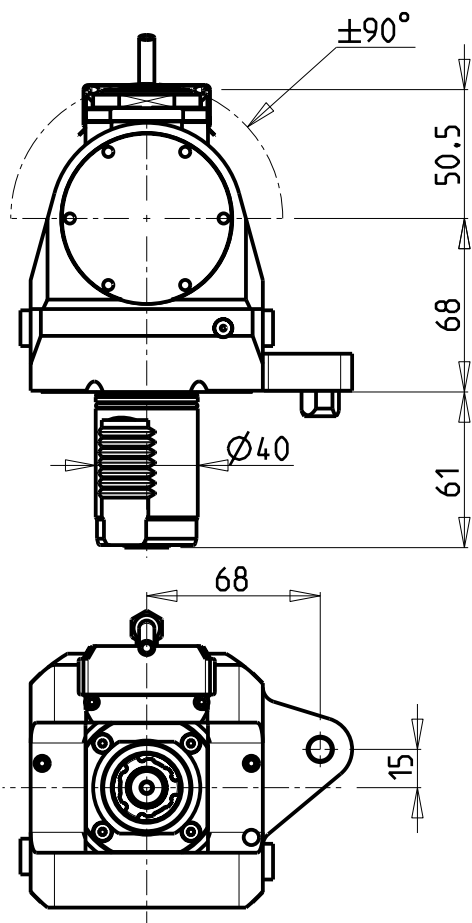
**M.T. srl**

Via Casino Albini 480  
 Tel. 0541/956034-957884  
 Fax 0541/956341  
 47842 S. GIOVANNI IN M. (RN)  
 e-mail: mtma@mtmarchetti.com  
 http://www.mtmarchetti.com

PRODUZIONE MODULI ROTANTI



PAGINA MZK335-2-00



### ATTENZIONE - ATTENTION - ACHTUNG

- Per lo smontaggio degli utensili utilizzare sempre la chiave di contrasto come indicato nel manuale d'uso.
- For disassembly of the tools use always the contrast key as mentioned in the user instructions.
- Fuer das Abmontieren der Werkzeuge immer den Gegenschluessel benutzen wie in der Bedienungsanleitung erwaeht.

Cod. MT	Mandrino Spindle	I	RPM	Coppia Max Max Torque Max Drehmoment	Lubrificazione int. Coolant through Innenkuehlung	Lubrificazione est. Ext. coolant Aussenkuehlung	CHIAVI INCLUSE Keys included Schluessel inbegriffen		
MZK0265120	ER A 20	1:1	6000	30Nm	-	X	CHUB36	CHUB22	CHTAER20ZC
MZK0265220	ER A 20	1:1	6000	30Nm	P=70bar	X	CHUB36	CHUB22	CHTAER20ZC

**MAZAK**

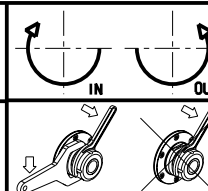
SQT 15-18M/MS/MY/MSY 16 STAZ. - QT NEXUS 200-250M/MS/MY/MSY 16 STAZ. - QT NEXUS 20011-25011 M/MS/MY/MSY 16 STAZ.  
 QT NEXUS 100-150M/MS 12 STAZ. - QT NEXUS 10011 M/MS - SQT100M/MS/MY/MSY - SQT10M/MS 12 STAZ. - SQT200-250M/MS/MY/MSY 16 ST.

MODULO MOTORIZZATO ORIENTABILE ±90° CON NONIO DIGITALE

±90° adjustable angle driven tool with digital display

Angetriebenes Werkzeug schwenkbar ±90° mit digital display

Subject to change without notice.



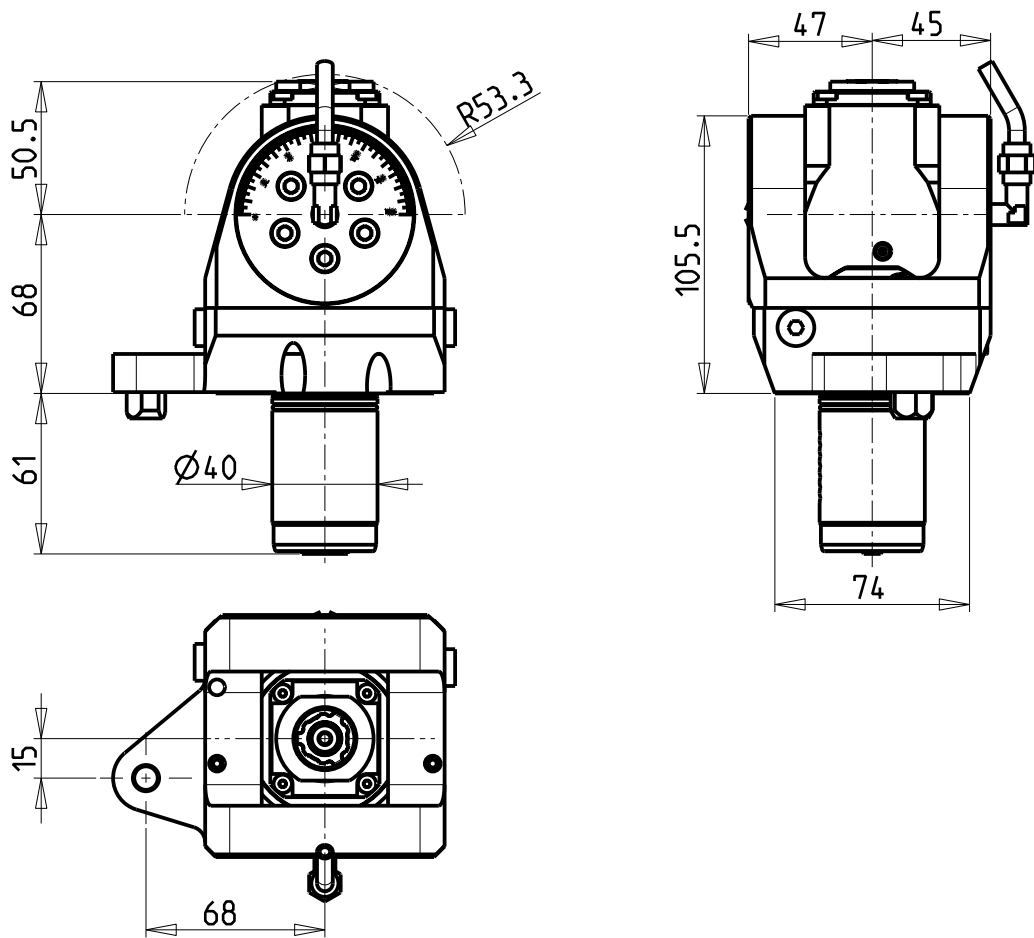
**M.T. srl**

Via Casino Albini 480  
 Tel. 0541/956034-957884  
 Fax 0541/956341  
 47842 S. GIOVANNI IN M. (RN)  
 e-mail: mtma@mtmarchetti.com  
 http://www.mtmarchetti.com

PRODUZIONE MODULI ROTANTI

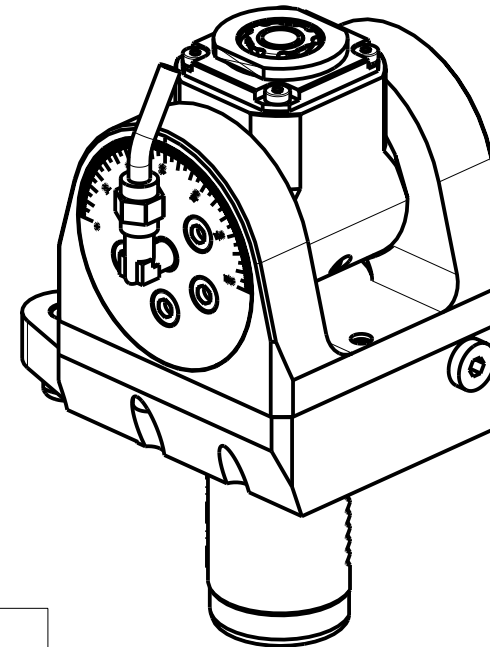


PAGINA MZK335-2-01



**ATTENZIONE - ATTENTION - ACHTUNG**

- Per lo smontaggio degli utensili utilizzare sempre la chiave di contrasto come indicato nel manuale d'uso.
- For disassembly of the tools use always the contrast key as mentioned in the user instructions.
- Fuer das Abmontieren der Werkzeuge immer den Gegenschlüssel benutzen wie in der Bedienungsanleitung erwäehnt.

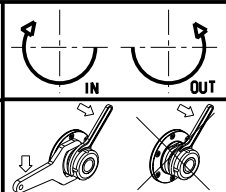


Cod. MT	Mandrino Spindle Spindel	I	RPM	Coppia Max Max Torque Max Drehmoment	Lubrificazione int. Coolant through Innenkuehlung	Lubrificazione est. Ext. coolant Aussenkuehlung	CHIAVI INCLUSE Keys included Schluesssel inbegriffen		
MZK0260316	ERA16	1:2	12000	8Nm		X	CHUB19_SP3	CHUB32	CHTAER16ZC
MZK0260416	ERA16	1:2	12000	8Nm	P=70bar	X	CHUB19_SP3	CHUB32	CHTAER16ZC

**MAZAK**  
 SQT 15-18M/MS/MY/MSY 16 STAZ. - QT NEXUS 200-250M/MS/MY/MSY 16 STAZ. - QT NEXUS 20011-25011 M/MS/MY/MSY 16 STAZ.  
 QT NEXUS 100-150M/MS 12 STAZ. - QT NEXUS 10011 M/MS - SQT100M/MS/MY/MSY - SQT10M/MS 12 STAZ. - SQT200-250M/MS/MY/MSY 16 ST.

**MODULO MOTORIZZATO ORIENTABILE +/-90° MOLTIPLICATO I=1:2**  
 +/-90° adjustable angle driven tool geared-up I=1:2  
 Angetriebenes Werkzeug schwenkbar +/-90° uebersetzt I=1:2

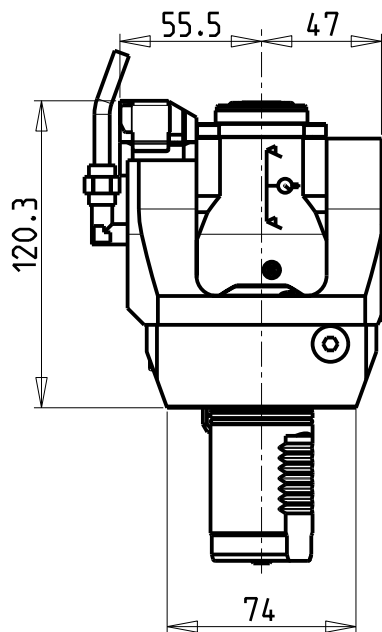
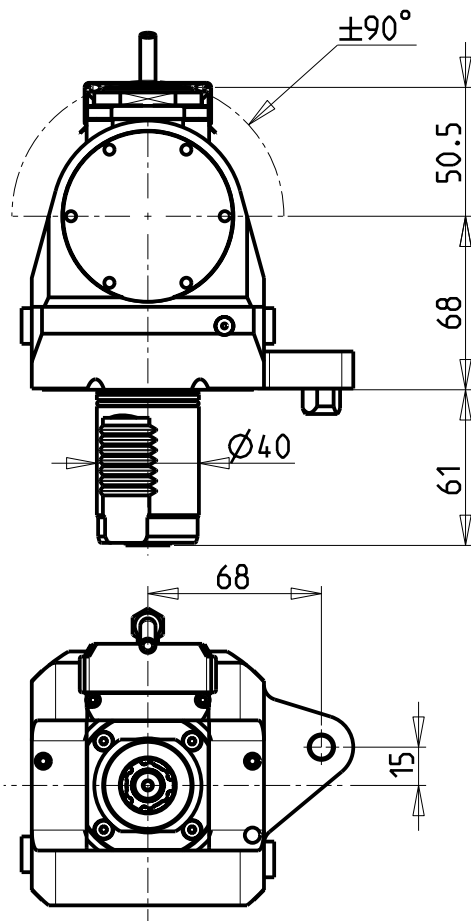
Subject to change without notice.



**M.T. srl**  
 Via Casino Albini 480  
 Tel. 0541/956034-957884  
 Fax 0541/956341  
 47842 S. GIOVANNI IN M. (RN)  
 e-mail: mtma@mtmarchetti.com  
 http://www.mtmarchetti.com

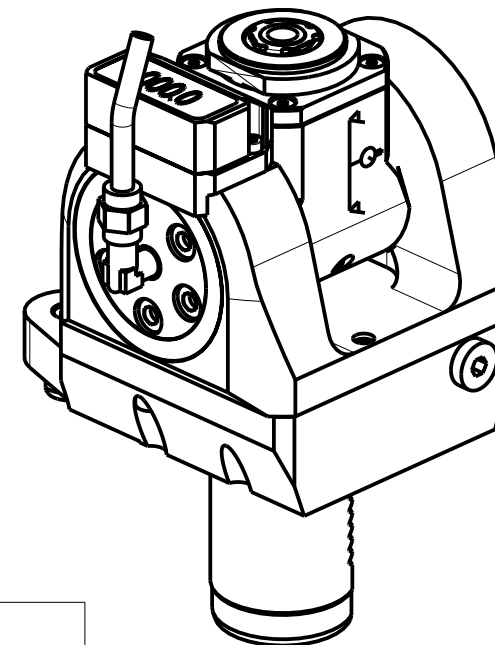
PRODUZIONE MODULI ROTANTI

PAGINA MZK336-2-00



**ATTENZIONE - ATTENTION - ACHTUNG**

- Per lo smontaggio degli utensili utilizzare sempre la chiave di contrasto come indicato nel manuale d'uso.
- For disassembly of the tools use always the contrast key as mentioned in the user instructions.
- Fuer das Abmontieren der Werkzeuge immer den Gegenschlüssel benutzen wie in der Bedienungsanleitung erwäehnt.



Cod. MT	Mandrino Spindle Spindel	I	RPM	Coppia Max Max Torque Max Drehmoment	Lubrificazione int. Coolant through Innenkuehlung	Lubrificazione est. Ext. coolant Aussenkuehlung	CHIAVI INCLUSE Keys included Schluesssel inbegriffen		
MZK0265316	ERA16	1:2	12000	8Nm	-	X	CHUB19_SP3	CHUB32	CHTAER16ZC
MZK0265416	ERA16	1:2	12000	8Nm	P=70bar	X	CHUB19_SP3	CHUB32	CHTAER16ZC

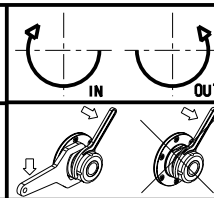
**MAZAK**

SQT 15-18M/MS/MY/MSY 16 STAZ. - QT NEXUS 200-250M/MS/MY/MSY 16 STAZ. - QT NEXUS 20011-25011 M/MS/MY/MSY 16 STAZ.  
 QT NEXUS 100-150M/MS 12 STAZ. - QT NEXUS 10011 M/MS - SQT100M/MS/MY/MSY - SQT10M/MS 12 STAZ. - SQT200-250M/MS/MY/MSY 16 ST.

MODULO MOTORIZZATO ORIENTABILE ±90° MOLTIPLICATO I=1:2 CON NONIO DIGITALE

+/-90° adjustable angle driven tool geared-up I=1:2 with digital display

Angetriebenes Werkzeug schwenkbar +/-90° uebersetzt I=1:2 mit digital display



**M.T. srl**

Via Casino Albini 480  
 Tel. 0541/956034-957884  
 Fax 0541/956341  
 47842 S. GIOVANNI IN M. (RN)  
 e-mail: mtma@mtmarchetti.com  
 http://www.mtmarchetti.com

PRODUZIONE MODULI ROTANTI



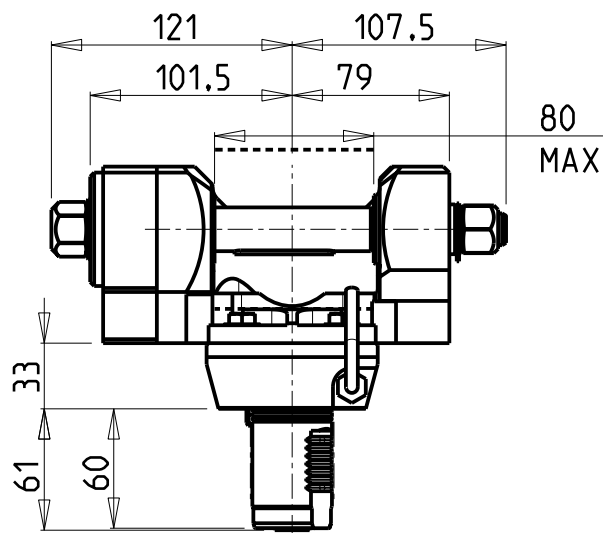
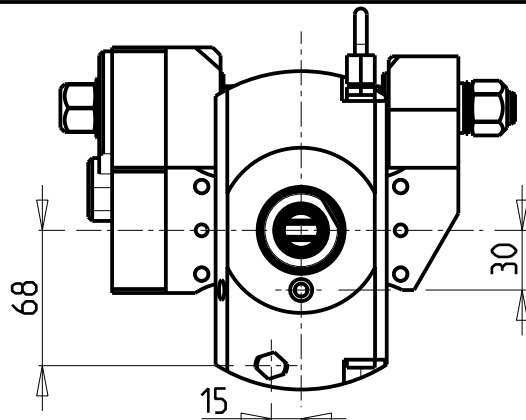
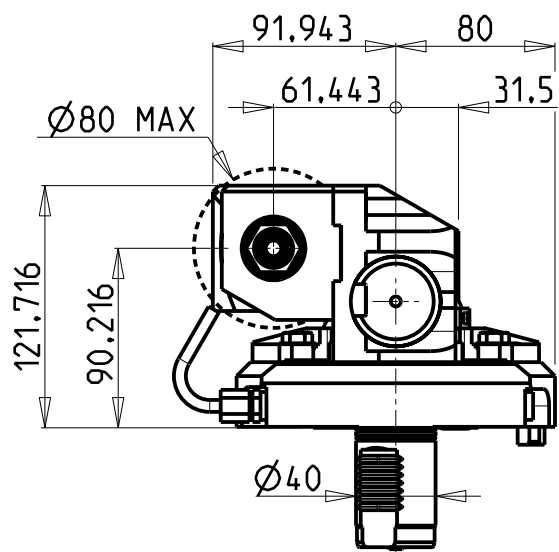
PAGINA MZK336-2-01

Subject to change without notice.

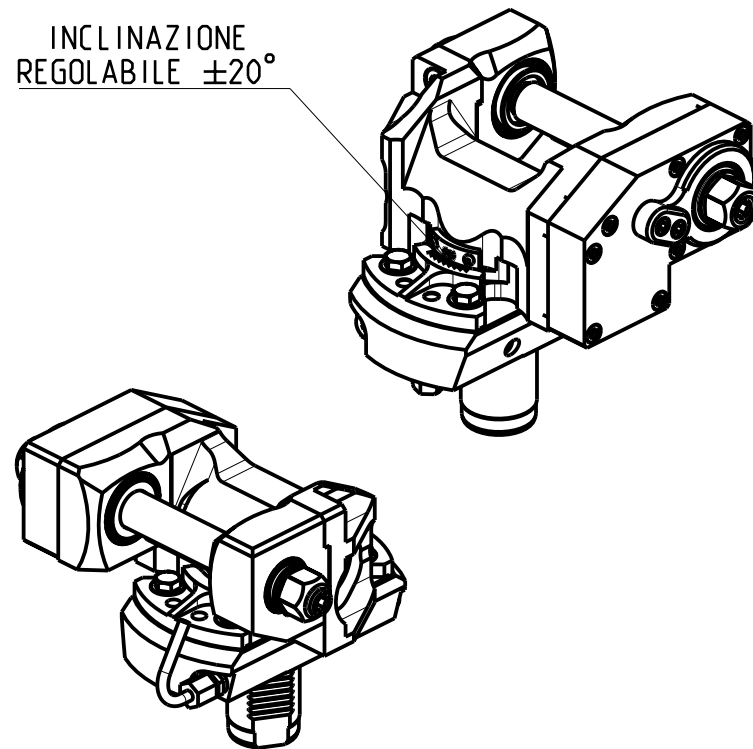
10/2018

**DOTAZIONI - SUPPLIED WITH - AUSSTATTUNG**

- mm / inch
- N°1 ALBERO + DISTANZIALI
  - N°1 SHAFT + SPACER
  - N°1 DORN + ABSTANDSSTUECK



INCLINAZIONE  
REGOLABILE ±20°



PER ALBERI E DISTANZIALI VEDI PAG. TBL250-1-00  
FOR SHAFT END SPACER SEE PAGE TBL250-1-00  
FUER DORN UND ABSTANDSSTUECK SEITE TBL250-1-00

Cod. MT	i	RPM max	Coppia Max Max Torque Max Drehmoment	Lubrificazione est. Ext. coolant Aussenkuehlung	D (mm)	D (Inch)	CHIAVI INCLUSE Keys included Schlüssel inbegriffen		
							CHUB24	CHUB13	CHESL08
MZK0351100	1:1	6000	60Nm	X	16-22-27-32	3/4"-1"-1 1/4"	CHUB24	CHUB13	CHESL08
MZK0352100	2:1	3000	80Nm	X	16-22-27-32	3/4"-1"-1 1/4"	CHUB24	CHUB13	CHESL08

**MAZAK**

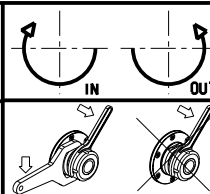
SQT 15-18M/MS/MY/MSY 16 STAZ. - QT NEXUS 200-250M/MS/MY/MSY 16 STAZ. - QT NEXUS 20011-25011 M/MS/MY/MSY 16 STAZ.  
QT NEXUS 100-150M/MS 12 STAZ. - QT NEXUS 10011 M/MS - SQT100M/MS/MY/MSY - SQT10M/MS 12 STAZ. - SQT200-250M/MS/MY/MSY 16 ST.

**MODULO MOTORIZZATO PORTACREATORE**

Driven gear hobber

Angetriebenes Zahnradwaelzfraes-Werkzeug

Subject to change without notice.



**M.T. srl**

Via Casino Albini 480  
Tel. 0541/956034-957884  
Fax 0541/956341

47842 S. GIOVANNI IN M. (RN)  
e-mail: mtma@mtmarchetti.com  
http://www.mtmarchetti.com

PRODUZIONE MODULI ROTANTI

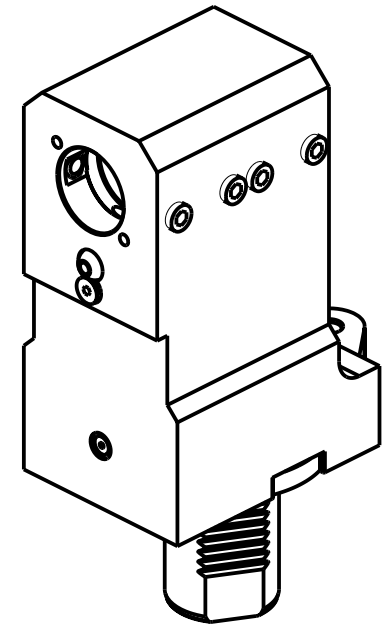
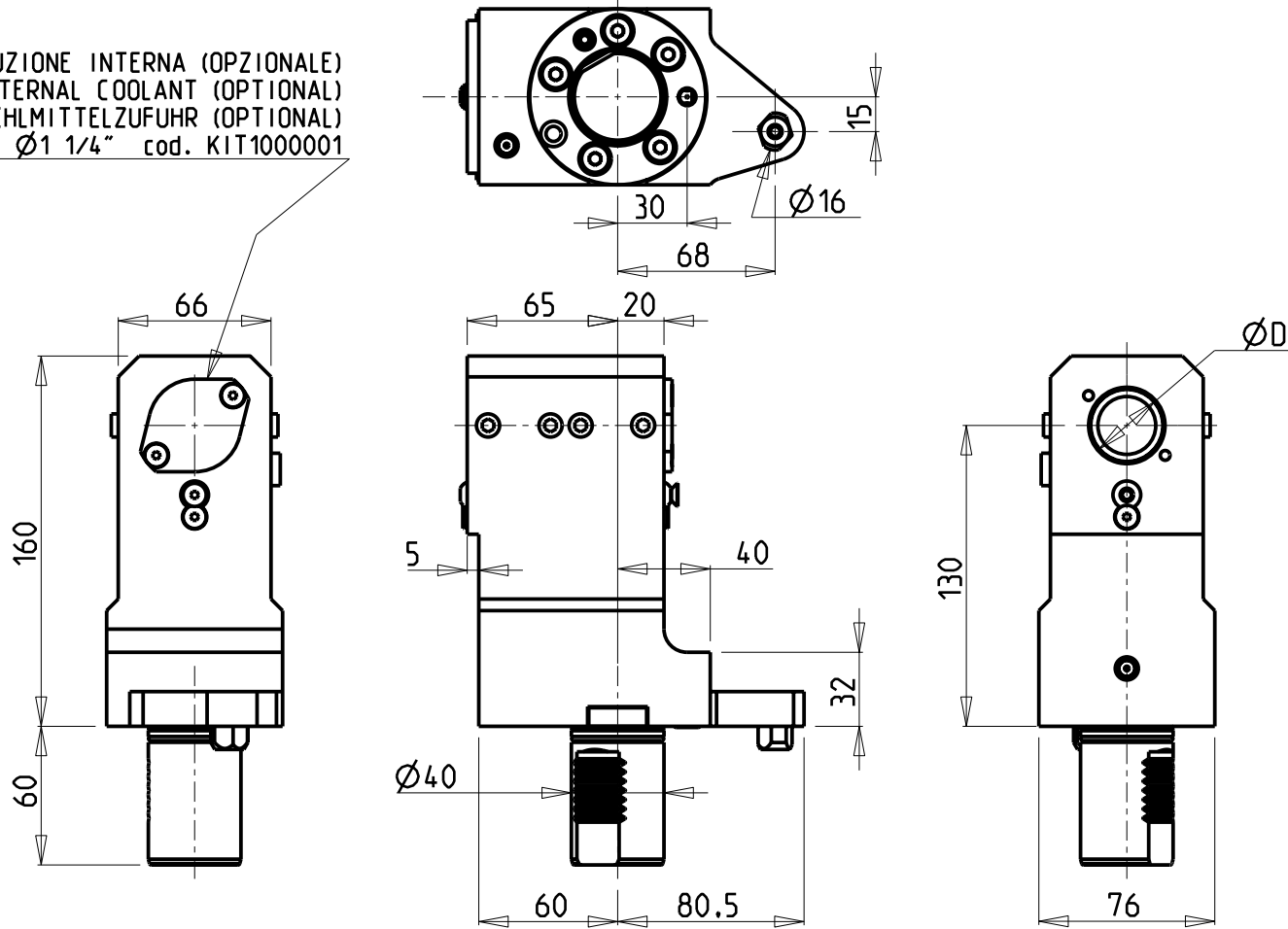


PAGINA MZK340-2-00

**ATTENZIONE - ATTENTION - ACHTUNG**

- VERIFICARE LE MISURE DI INGOMBRO PER POSSIBILE INTERFERENZA SU ALCUNI MODELLI DI MACCHINE
- Please check the overall sizes for possible interferences on some machine models
- Bitte überprüfen sie das ausmass um mögliche interferenzen auf einigen maschinen modellen zu vermeiden

KIT ADDUZIONE INTERNA (OPZIONALE)  
 KIT FOR INTERNAL COOLANT (OPTIONAL)  
 KIT FUER INTERNE KUEHLMITTELZUFUHR (OPTIONAL)  
 Ø32 - Ø1 1/4" cod. KIT1000001



PER BOCCOLE DI RIDUZIONE VEDI PAG. TBL150-1-00  
 FOR REDUCING BUSHINGS SEE PAGE TBL150-1-00  
 FÜR REDUZIERBUCHSE SIEHE SEITE TBL150-1-00

Cod. MT	N°Utensili N°Tools N°Werkzeuge	Lubrificazione int. opzionale Coolant through optional Innenkühlung Optional	Lubrificazione est. Ext. coolant Aussenkühlung	Misure Dimensions Masse	D
MZK0653200	1	X	X	mm	32
MZK0653175	1	X	X	inch	1 1/4"

**MAZAK**

SQT 15-18M/MS/MY/MSY 16 STAZ. - QT NEXUS 200-250M/MS/MY/MSY 16 STAZ. - QT NEXUS 20011-25011 M/MS/MY/MSY 16 STAZ.  
 QT NEXUS 100-150M/MS 12 STAZ. - SQT100M/MS/MY/MSY - SQT10M/MS 12 STAZ. - SQT200-250M/MS/MY/MSY 16 ST.

PORTAUTENSILE ASSIALE PER BARENO Ø32mm / Ø1 1/4" H=130mm

Axial single boring bar holder Ø32mm / Ø1 1/4" H=130mm

Axial Bohrhälter Ø32mm / Ø1 1/4" H=130mm

Subject to change without notice.

**M.T. srl**

Via Casino Albini 480  
 Tel. 0541/956034-957884  
 Fax 0541/956341  
 47842 S. GIOVANNI IN M. (RN)  
 e-mail: mtma@mtmarchetti.com  
 http://www.mtmarchetti.com

PRODUZIONE MODULI ROTANTI



PAGINA MZK650-2-10