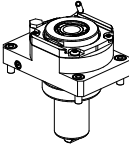
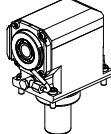
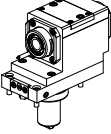

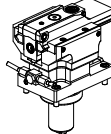
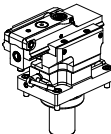
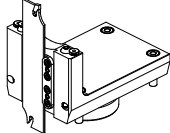
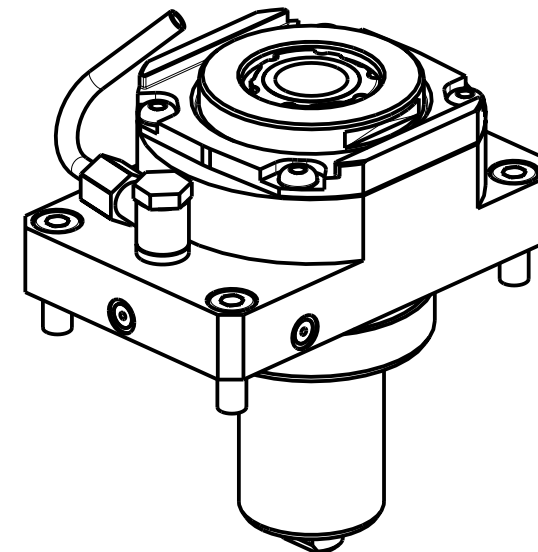
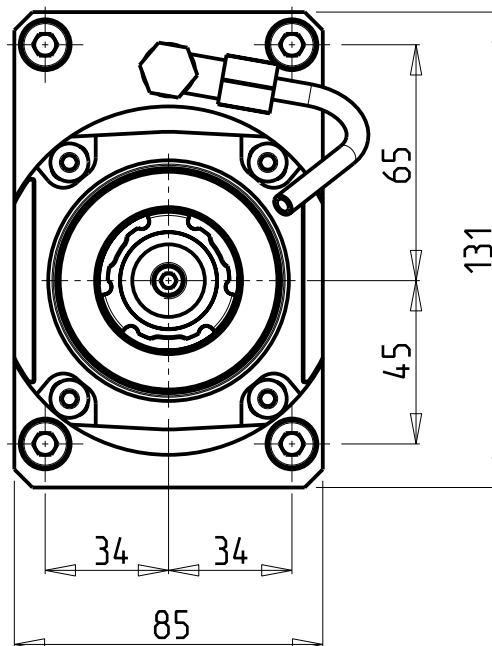
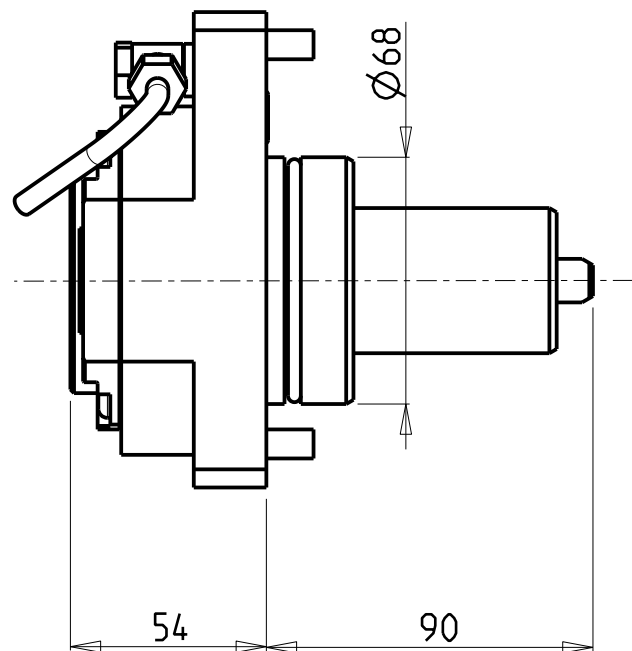


		PAGINA Page Seite
<p>MODULO MOTORIZZATO RADIALE Radial driven tool Radial angetriebenes Werkzeug</p>		MZK010.7.00
<p>MODULO MOTORIZZATO ASSIALE H=80mm Axial driven tool H=80mm Axial angetriebenes Werkzeug H=80mm</p>		MZK150.7.10
<p>MODULO MOTORIZZATO ASSIALE ARRETRATO BISPORGENTE H=85mm Axial opposite face rear-set driven tool H=85mm Axial angetriebenes Werkzeug zurueckversetzt halb vorspringend H=85mm</p>		MZK243.7.10 
<p>MODULO MOTORIZZATO STOZZATORE CORSA 50mm H=87mm Slotting driven tool 50mm stroke H=87mm Keilnutenstossmaschine 50mm Hub H=87mm</p>		MZK360.7.00
<p>MODULO MOTORIZZATO STOZZATORE CORSA 25mm H=87mm Slotting driven tool 25mm stroke H=87mm Keilnutenstossmaschine 25mm Hub H=87mm</p>		MZK360.7.01
<p>PORTAUTENSILE RADIALE PER LAMA Radial blade holder Radial Abstechhalter</p>		MZK510.7.00

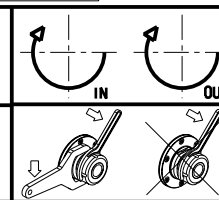


Cod. MT	Mandrino Spindle Spindel	I	RPM	Coppia Max Max Torque Max Drehmoment	Lubrificazione est. Ext. coolant Aussenkuehlung	CHIAVI NON INCLUSE Keys not included Schluessel nicht einbegriffen		
MZK0320332	ERA32	1:1	6000	70Nm	X	CHUB30	CHTAER32ZC ■	OKU0430007 ■

- Chiave inclusa
- Key included
- Schluessel inbegriffen

MAZAK
 MOD: QUICK TURN SMART 100M/150M/200M/250M - QT 200/250M - QTC100/200/300M - QTU 200/350M

MODULO MOTORIZZATO RADIALE
 Radial driven tool
 Radial angetriebenes Werkzeug



M.T. srl
 Via Casino Albini 480
 Tel. 0541/956034-957884
 Fax 0541/956341
 47842 S. GIOVANNI IN M. (RN)
 e-mail: mtma@mtmarchetti.com
 http://www.mtmarchetti.com

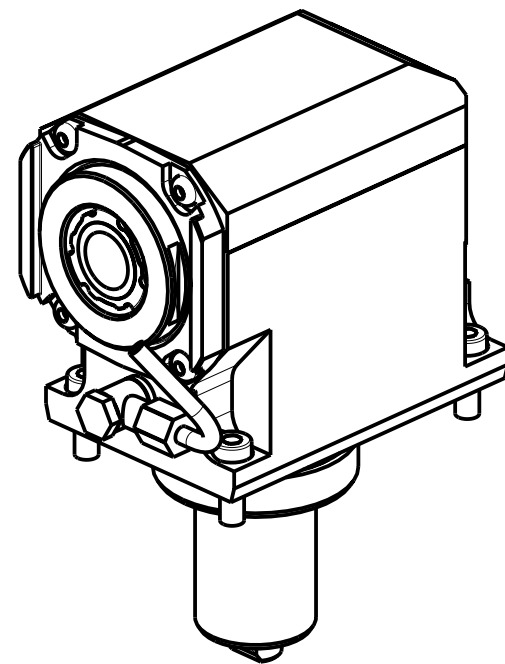
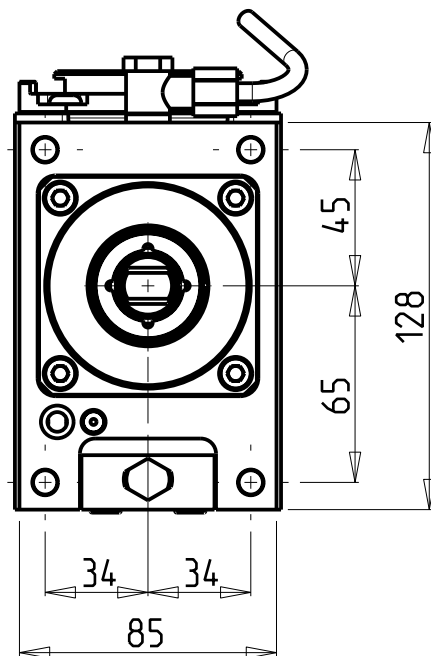
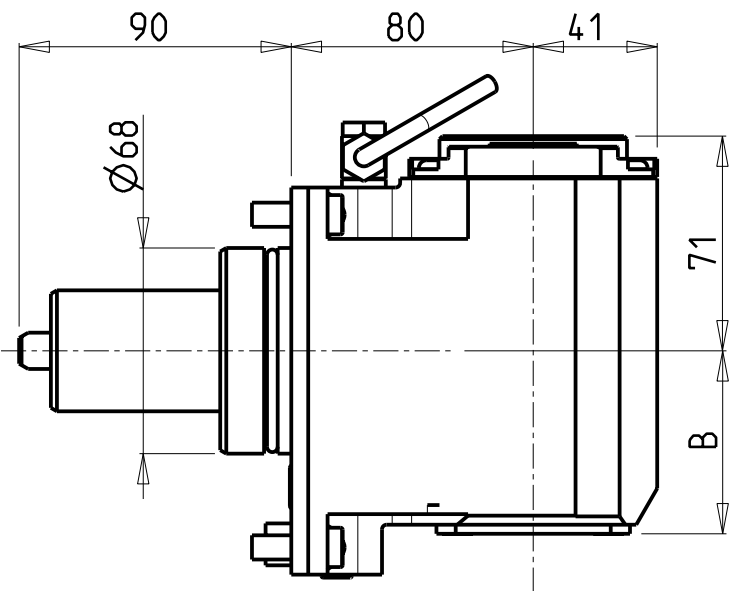
PRODUZIONE MODULI ROTANTI



PAGINA MZK010-7-00

Subject to change without notice.

10/2018

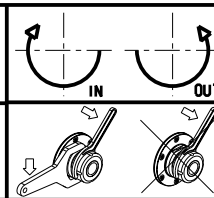


Cod. MT	Mandrino Spindle Spindel	I	RPM	Coppia Max Max Torque Max Drehmoment	Lubr.interna Coolant through Innenkuehlung	Lubr.esterna Ext. coolant Aussenkuehlung	B	CHIAVI NON INCLUDE Keys not included Schluessel nicht einbegriffen		
MZK0310332	ERA32	1:1	6000	70Nm		X	60.5	CHUB30	CHTAER32ZC	OKU0430007
MZK0310432	ERA32	1:1	6000	70Nm	P=70bar	X	74	CHUB30	CHTAER32ZC	OKU0430007

- Chiave inclusa
- Key included
- Schluessel inbegriffen

MAZAK
 MOD: QUICK TURN SMART 100M/150M/200M/250M - QT 200/250M - QTC100/200/300M - QTU 200/350M

MODULO MOTORIZZATO ASSIALE H=80mm
 Axial driven tool H=80mm
 Axial angetriebenes Werkzeug H=80mm



M.T. srl
 Via Casino Albini 480
 Tel. 0541/956034-957884
 Fax 0541/956341
 47842 S. GIOVANNI IN M. (RN)
 e-mail: mtma@mtmarchetti.com
 http://www.mtmarchetti.com

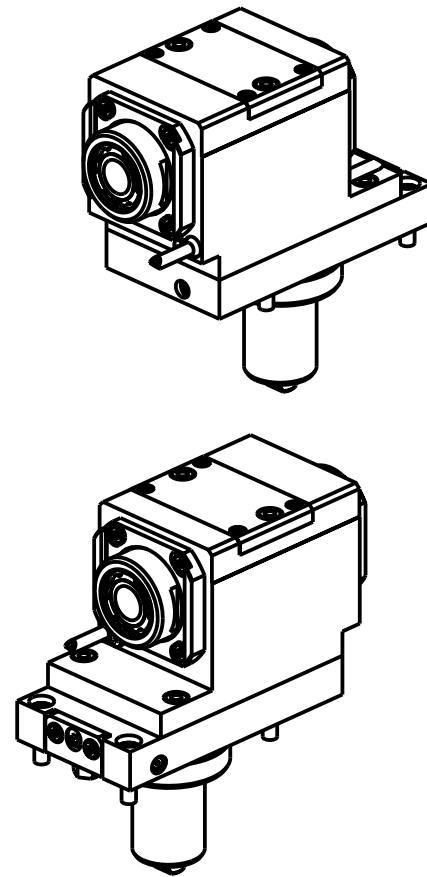
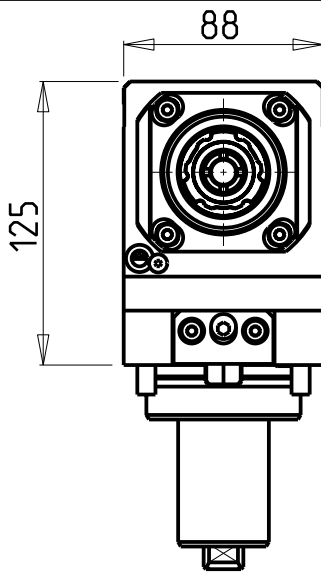
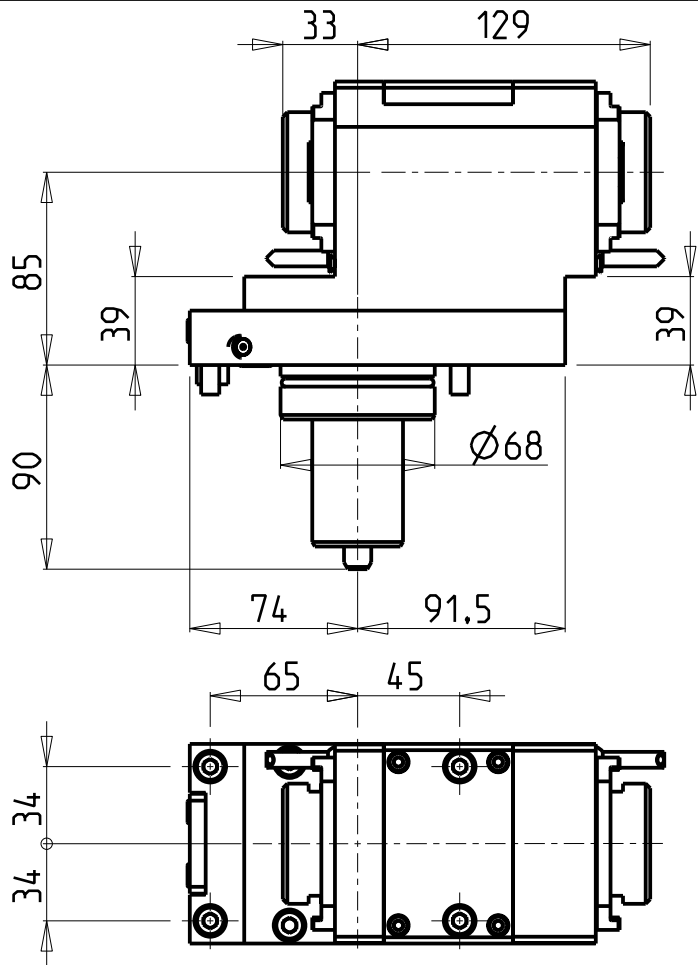
PRODUZIONE MODULI ROTANTI



PAGINA MZK150-7-10

Subject to change without notice.

10/2018



ATTENZIONE - ATTENTION - ACHTUNG

- Per lo smontaggio degli utensili utilizzare sempre la chiave di contrasto come indicato nel manuale d'uso.
- For disassembly of the tools use always the contrast key as mentioned in the user instructions.
- Fuer das Abmontieren der Werkzeuge immer den Gegenschlüssel benutzen wie in der Bedienungsanleitung erwaeht.

ATTENZIONE - ATTENTION - ACHTUNG

- VERIFICARE LE MISURE DI INGOMBRO PER POSSIBILE INTERFERENZA SU ALCUNI MODELLI DI MACCHINE
- Please check the overall sizes for possible interferences on some machine models
- Bitte überprüfen sie das ausmass um mögliche interferenzen auf einigen maschinen modellen zu vermeiden

- Chiave inclusa
- Key included
- Schlüssel inbegriffen

Cod. MT	Mandrino Spindle Spindel	I	RPM	Coppia Max Max Torque Max Drehmoment	Lubrificazione est. Ext. coolant Aussenkuehlung	CHIAVI NON INCLUSE Keys not included Schlüssel nicht einbegriffen		
MZK0810232	ERA32+ERA32	1:1	6000	70Nm	X	CHUB30	CHTAER32ZC	OKU0650004

NEW

MAZAK
 MOD: QUICK TURN SMART 100M/150M/200M/250M - QT 200/250M - QTC100/200/300M - QTU 200/350M

MODULO MOTORIZZATO ASSIALE ARRETRATO BISPORGENTE H=85mm
 Axial opposite face rear-set driven tool H=85mm
 Axial angetriebenes Werkzeug zurueckversetzt halb vorspringend H=85mm

M.T. srl
 Via Casino Albini 480
 Tel. 0541/956034-957884
 Fax 0541/956341
 47842 S. GIOVANNI IN M. (RN)
 e-mail: mtma@mtmarchetti.com
 http://www.mtmarchetti.com

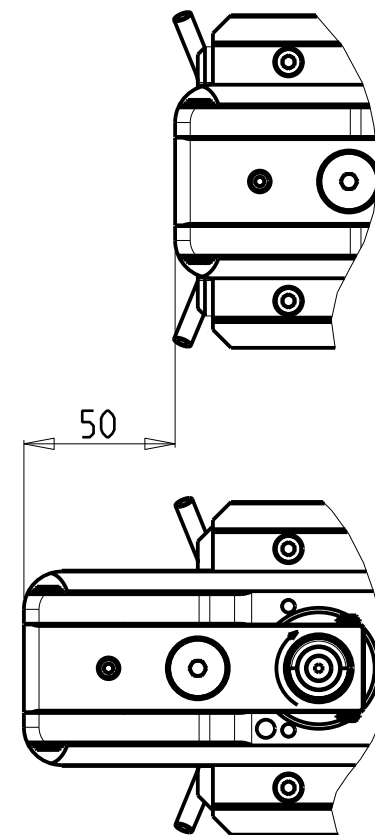
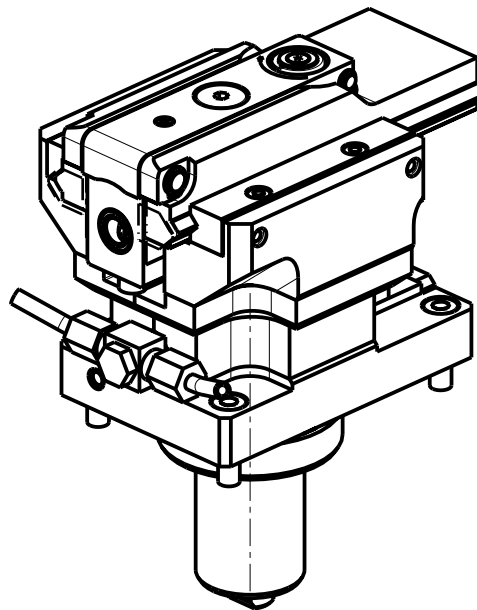
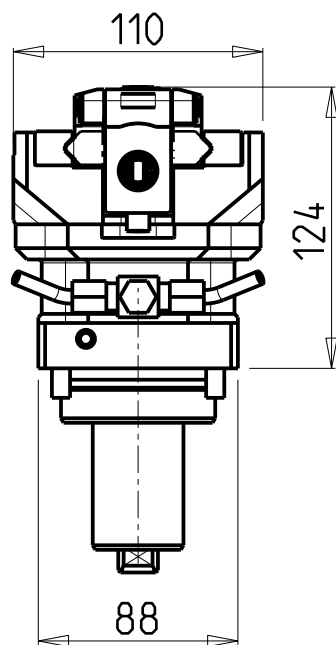
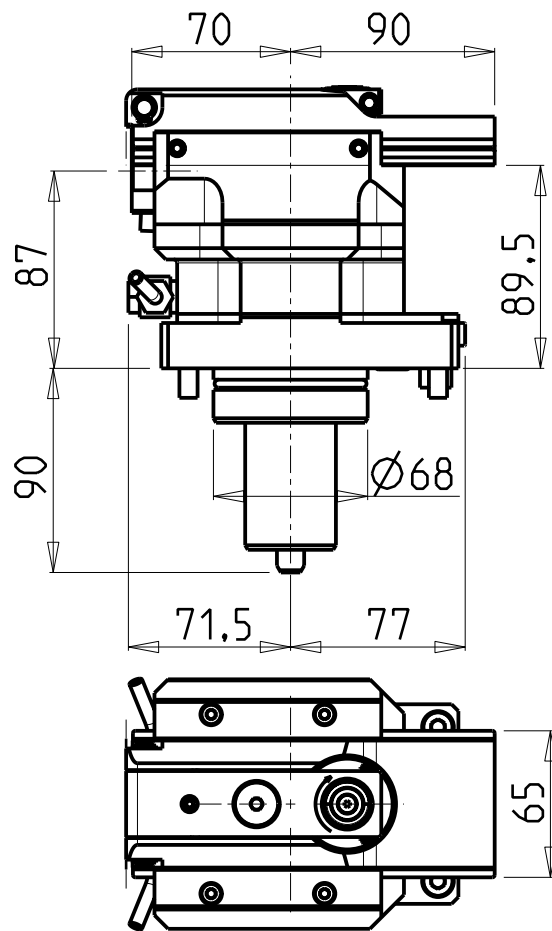
PRODUZIONE MODULI ROTANTI



PAGINA MZK243-7-10

Subject to change without notice.

10/2018



PER UTENSILI STOZZATORI VEDI PAG. TBL400-1-00
 FOR DRIVEN SLOTTING TOOL CUTTING-TOOLS SEE PAGE TBL400-1-00
 FÜR NUTENSTOSS-WERKZEUG SCHNEIDWERKZEUGE SIEHE SEITE TBL400-1-00

Cod. MT	I	RPM MAX	Lubr. esterna Ext. coolant Aussenkuehlung
MZK0340100	4:1	2000	X

MAZAK
 MOD: QUICK TURN SMART 100M/150M/200M/250M - QT 200/250M - QTC100/200/300M - QTU 200/350M

MODULO MOTORIZZATO STOZZATORE CORSA 50mm H=87mm
 Slotting driven tool 50mm stroke H=87mm
 Keilnutenstossmaschine 50mm Hub H=87mm

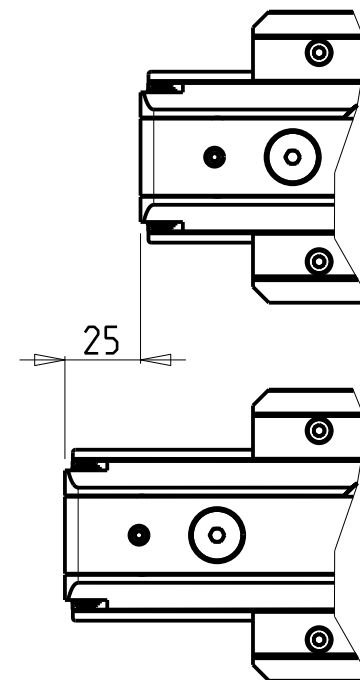
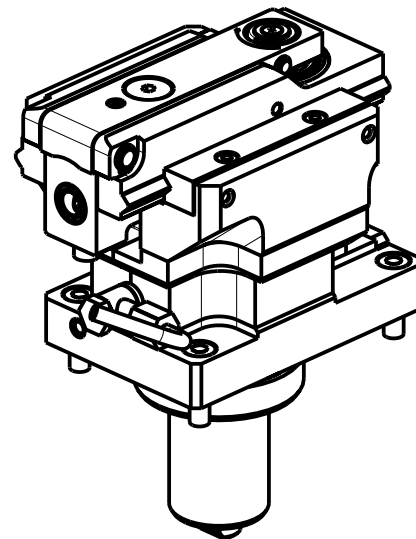
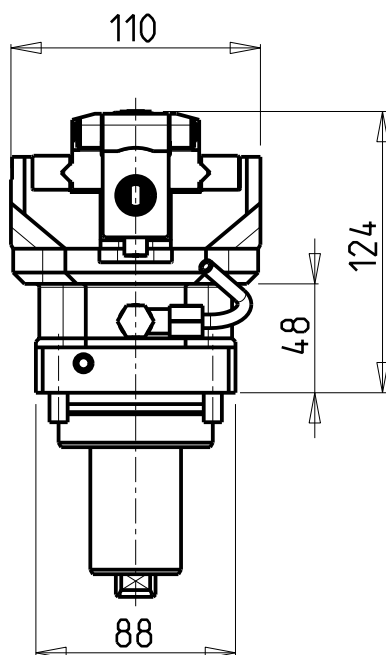
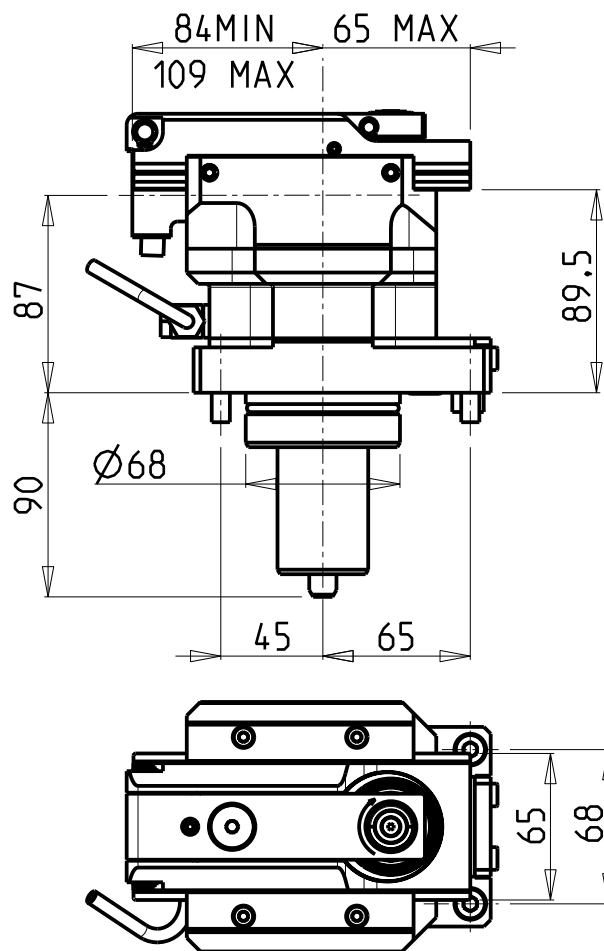
Subject to change without notice.

M.T. srl
 Via Casino Albini 480
 Tel. 0541/956034-957884
 Fax 0541/956341
 47842 S. GIOVANNI IN M. (RN)
 e-mail: mtma@mtmarchetti.com
 http://www.mtmarchetti.com

PRODUZIONE MODULI ROTANTI



PAGINA MZK360-7-00



PER UTENSILI STOZZATORI VEDI PAG. TBL400-1-00
 FOR DRIVEN SLOTTING TOOL CUTTING-TOOLS SEE PAGE TBL400-1-00
 FÜR NUTENSTOSS-WERKZEUG SCHNEIDWERKZEUGE SIEHE SEITE TBL400-1-00

Cod. MT	I	RPM MAX	Lubr. esterna Ext. coolant Aussenkuehlung
MZK0340200	4:1	2400	X

MAZAK
 MOD: QUICK TURN SMART 100M/150M/200M/250M - QT 200/250M - QTC100/200/300M - QTU 200/350M

MODULO MOTORIZZATO STOZZATORE CORSA 25mm H=87mm
 Slotting driven tool 25mm stroke H=87mm
 Keilnutenstossmaschine 25mm Hub H=87mm

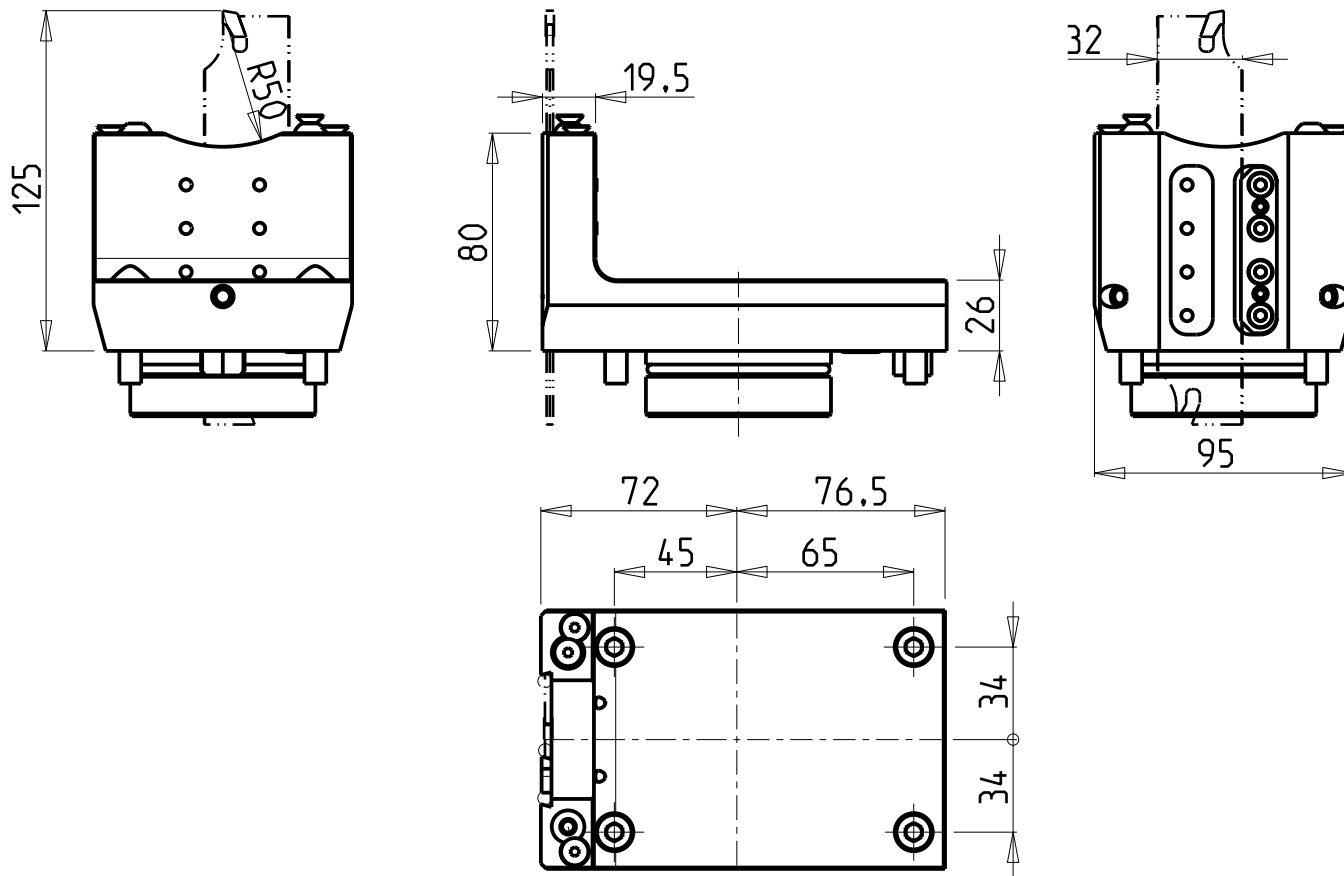
Subject to change without notice.

M.T. srl
 Via Casino Albini 480
 Tel. 0541/956034-957884
 Fax 0541/956341
 47842 S. GIOVANNI IN M. (RN)
 e-mail: mtma@mtmarchetti.com
 http://www.mtmarchetti.com

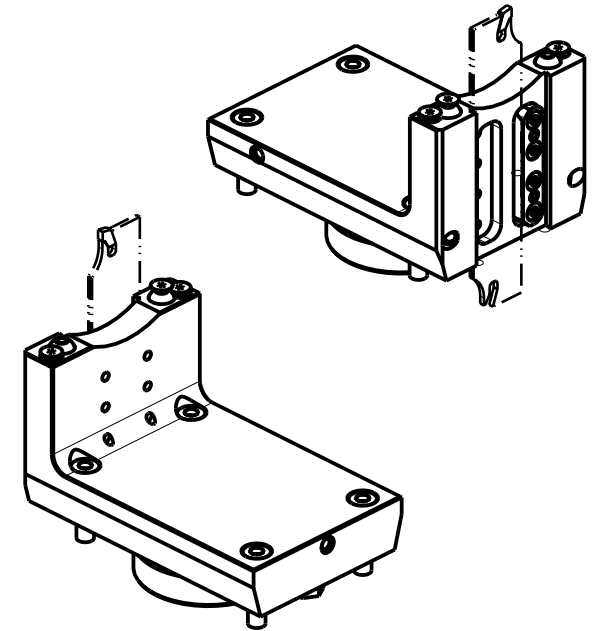
PRODUZIONE MODULI ROTANTI



PAGINA MZK360-7-01



POSSIBILITA' DI LAVORO M3/M4
 OPTION OF M3/M4 WORKING
 ARBEITSMOEGlichkeit M3/M4




DOTAZIONI - SUPPLIED WITH - AUSSTATTUNG

- N°1 - LAMA - BLADE - KLINGE ISCAR H=32 Sp. 3/4mm (KENNAMETAL OPTIONAL)
- N°10 - INSERTI - INSERTS - EINLAGEN
- N°1 - CHIAVE A T PER MONTAGGIO INSERTI
 - T-WRENCH FOR INSERT SET UP
 - T-SCHLUESSEL FUER EINSATZSTUECK-MONTAGE

Cod. MT	N°Utensili N°Tools N°Werkzeuge	Lubr.esterna Ext. coolant Aussenkuehlung
MZK0330132	1	X

MAZAK
 MOD: QUICK TURN SMART 100M/150M/200M/250M - QT 200/250M - QTC100/200/300M - QTU 200/350M
 PORTAUTENSILE RADIALE PER LAMA
 Radial blade holder
 Radial Abstechhalter

M.T. srl
 Via Casino Albini 480
 Tel. 0541/956034-957884
 Fax 0541/956341
 47842 S. GIOVANNI IN M. (RN)
 e-mail: mtma@mtmarchetti.com
 http://www.mtmarchetti.com

PRODUZIONE MODULI ROTANTI

 PAGINA MZK510-7-00

Subject to change without notice.