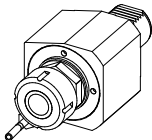

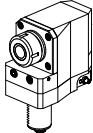
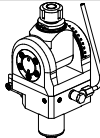
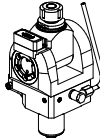
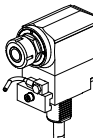
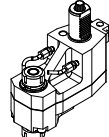
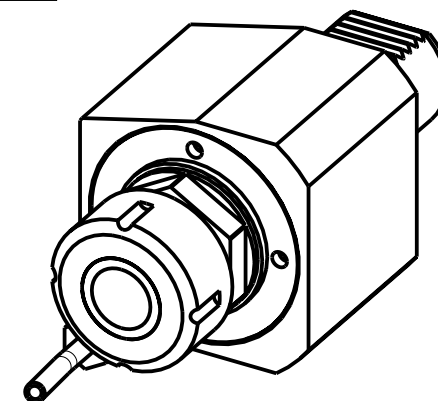
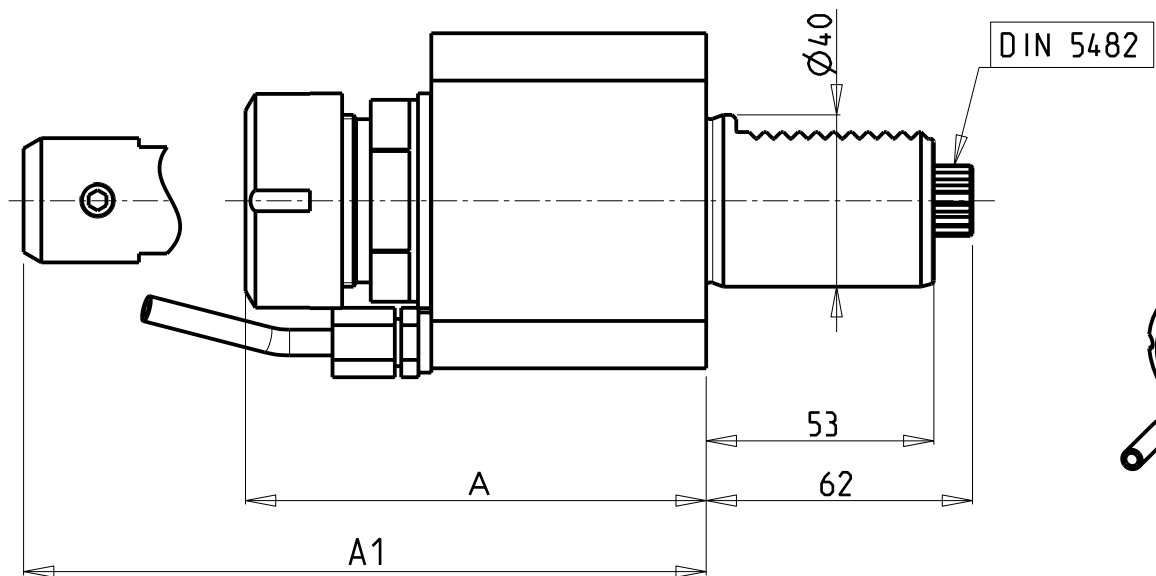
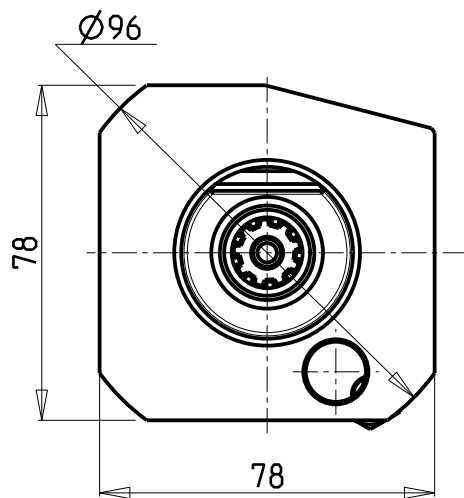


		PAGINA Page Seite
<p><b>MODULO MOTORIZZATO ASSIALE VD140 DIN 5482</b> Axial driven tool VD140 DIN 5482 Axial angetriebenes Werkzeug VD140 DIN 5482</p>		KIA014.1.00
<p><b>MODULO MOTORIZZ. ASSIALE MOLTIPLICATO I=1:2 DISASSATO 42mm VD140</b> Axial geared-up I=1:2 driven tool re-directed by 42mm VD140 Axial angetriebenes Werkzeug uebersetzt I=1:2 achsversetzt um 42mm VD140</p>		KIA014.1.60
<p><b>MODULO MOTORIZZATO RADIALE ARRETRATO VD140 DIN 5482</b> Radial rear-set driven tool VD140 DIN 5482 Radial angetriebenes Werkzeug zurueckversetzt VD140 DIN 5482</p>		KIA015.1.60
<p><b>MODULO MOTORIZZATO ORIENTABILE ±90° VD140 DIN 5482</b> ±90° adjustable angle driven tool VD140 DIN 5482 Angetriebenes Werkzeug schwenkbar ±90° VD140 DIN 5482</p>		KIA016.1.60
<p><b>MOD. MOTOR. ORIENTABILE ±90° CON NONIO DIGITALE VD140 DIN 5482</b> ±90° adjustable angle driven tool with digital display VD140 DIN 5482 Angetriebenes Werkzeug schwenkbar ±90° mit digital display VD140 DIN 5482</p>		KIA016.1.61
<p><b>MODULO MOTORIZZATO ASSIALE VD140</b> Axial driven tool VD140 Axial angetriebenes Werkzeug VD140</p>		KIA150.1.10
<p><b>MODULO MOTORIZZATO ASSIALE BISPORGENTE ARRETRATO VD140 DIN5482</b> Axial rear-set opposite face twin driven tool VD140 DIN5482 Axial angetriebenes Werkzeug halb vorspringend zurueckversetzt VD140 DIN5482</p>		KIA243.1.10

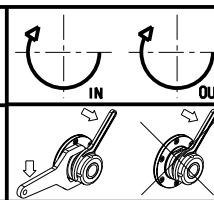




Cod. MT	Mandrino Spindle Spindel	I	RPM	Coppia Max Max Torque Max Drehmoment	Lubrificazione int. Coolant through Innenkuehlung	Lubrificazione est. Ext. coolant Aussenkuehlung	A	A1	CHIAVI NON INCLUSE Keys not included Schluessel nicht einbegriffen	
202SAU_A32_40D00	ER32	1:1	4000	70Nm	-	X	107.26	-	CHUB41	CHSTER32
202SAU_A32_40D10	ER32	1:1	4000	70Nm	P=30bar	X	110.46	-	CHUB41	CHSTER32
SAU0460420	WELDON 20	1:1	4000	70Nm	-	X	-	97.3	-	-

HYUNDAI-W IA (KIA)  
 MOD: SKT15LM/LMS - L150LMSA - SKT21LM/LMS - L210LMSA

MODULO MOTORIZZATO ASSIALE VDI40 DIN 5482  
 Axial driven tool VDI40 DIN 5482  
 Axial angetriebenes Werkzeug VDI40 DIN 5482



**M.T. srl**  
 Via Casino Albini 480  
 Tel. 0541/956034-957884  
 Fax 0541/956341  
 47842 S. GIOVANNI IN M. (RN)  
 e-mail: mtma@mtmarchetti.com  
 http://www.mtmarchetti.com

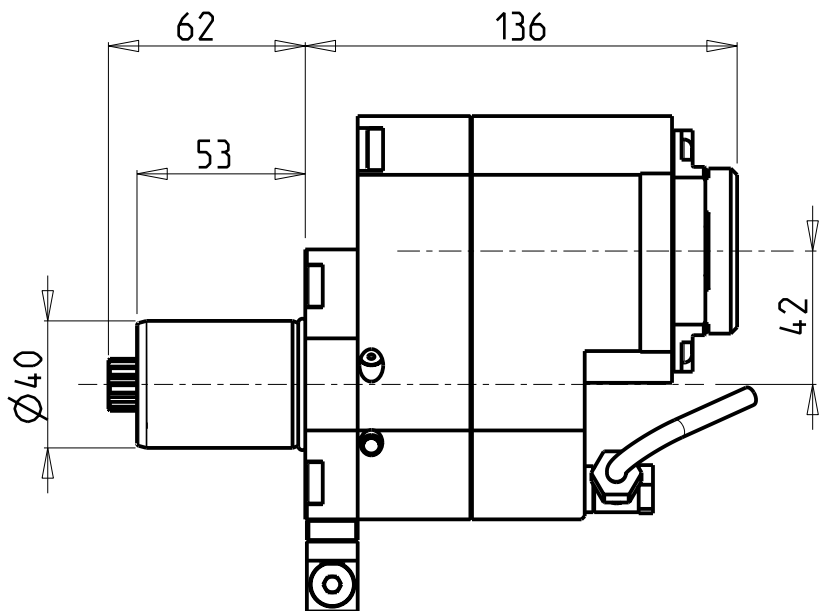
PRODUZIONE MODULI ROTANTI



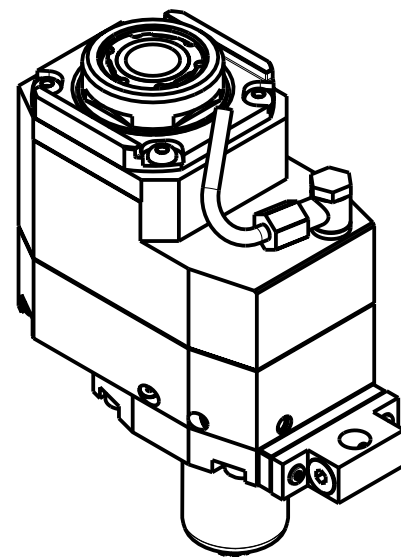
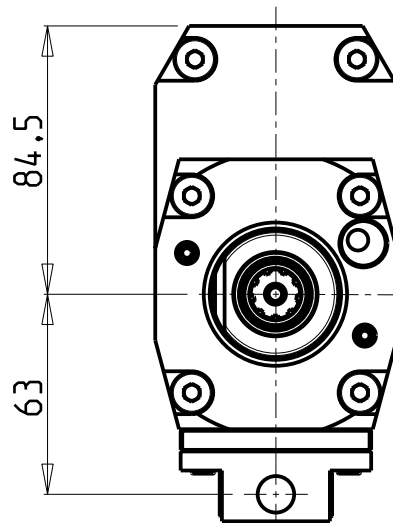
PAGINA KIA014-1-00

Subject to change without notice.

10/2018



versione sx  
left version  
version links



DIN 5482

- Chiave inclusa
- Key included
- Schluessel inbegriffen

Cod. MT	Mandrino Spindle Spindel	i	RPM	Coppia Max Max Torque Max Drehmoment	Lubrificazione int. Coolant Through Innenkuehlung	Lubrificazione est. Ext. coolant Aussenkuehlung	CHIAVI NON INCLUSE Keys not included Schluessel nicht einbegriffen		
SAU0447132	ERA32	1:2	8000	45Nm	-	X	CHUB30	CHTAER32ZC *	OKU0650004 *
SAU0447232	ERA32	1:2	8000	45Nm	P=70bar	X	CHUB30	CHTAER32ZC *	OKU0650004 *

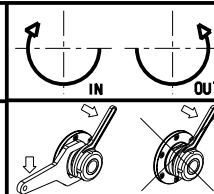
HYUNDAI-W IA (KIA)

MOD: SKT15LM/LMS - L150LMSA - SKT21LM/LMS - L210LMSA

MODULO MOTORIZZATO ASSIALE MOLTIPLICATO I=1:2 DISASSATO 42mm VD140

Axial geared-up I=1:2 driven tool re-directed by 42mm VD140

Axial angetriebenes Werkzeug uebersetzt I=1:2 achsversetzt um 42mm VD140



**M.T. srl**

Via Casino Albini 480  
Tel. 0541/956034-957884  
Fax 0541/956341

47842 S. GIOVANNI IN M. (RN)  
e-mail: mtma@mtmarchetti.com  
http://www.mtmarchetti.com

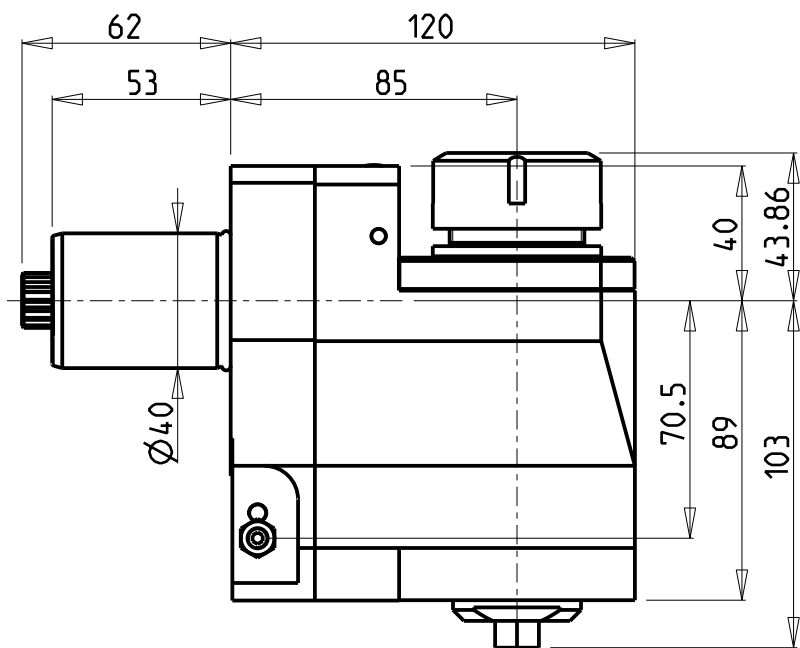
PRODUZIONE MODULI ROTANTI



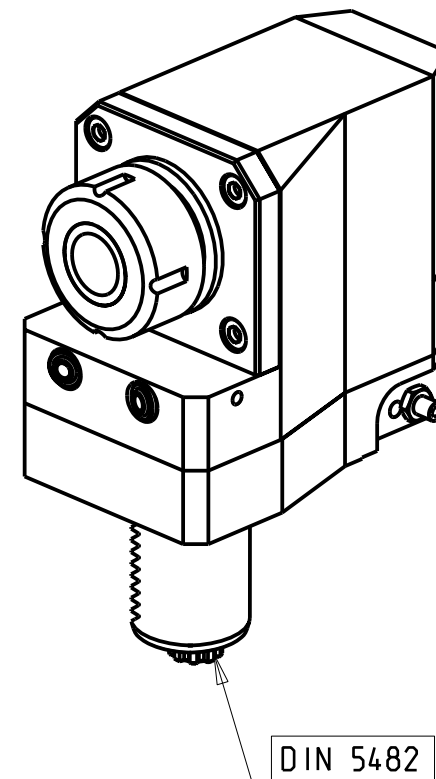
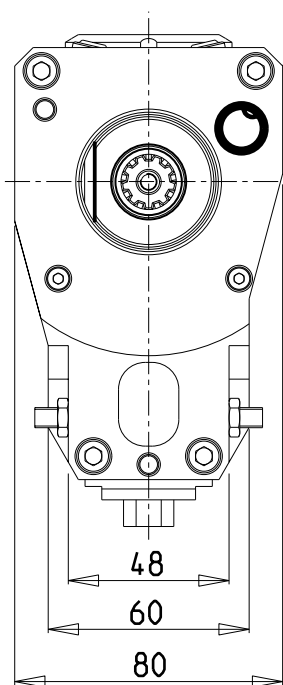
PAGINA KIA014-1-60

Subject to change without notice.

10/2018



versione sx  
left version  
version links



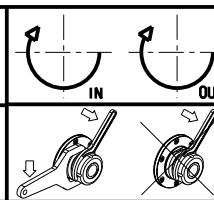
DIN 5482

Cod. MT	Mandrino Spindle Spindel	i	RPM	Coppia Max Max Torque Max Drehmoment	Lubrificazione est. Ext. coolant Aussehenkuehlung	CHIAVI NON INCLUSE Keys not included Schluessel nicht einbegriffen	
201SAU_R32_40D20	ER32	1:1	4000	70Nm	X	CHUB13	CHSTER32

HYUNDAI-W IA (KIA)  
MOD: SKT15LM/LMS - L150LMSA - SKT21LM/LMS - L210LMSA

MODULO MOTORIZZATO RADIALE ARRETRATO VDI40 DIN 5482  
Radial rear-set driven tool VDI40 DIN 5482  
Radial angetriebenes Werkzeug zurueckversetzt VDI40 DIN 5482

Subject to change without notice.

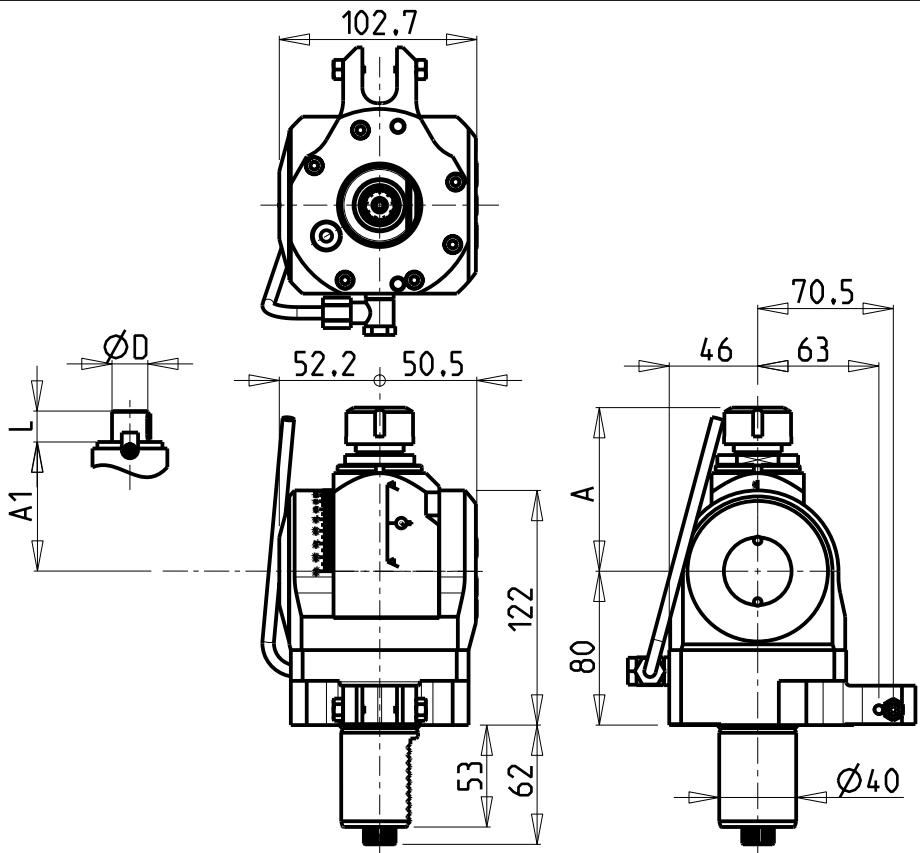


**M.T. srl**  
Via Casino Albini 480  
Tel. 0541/956034-957884  
Fax 0541/956341  
47842 S. GIOVANNI IN M. (RN)  
e-mail: mtma@mtmarchetti.com  
http://www.mtmarchetti.com

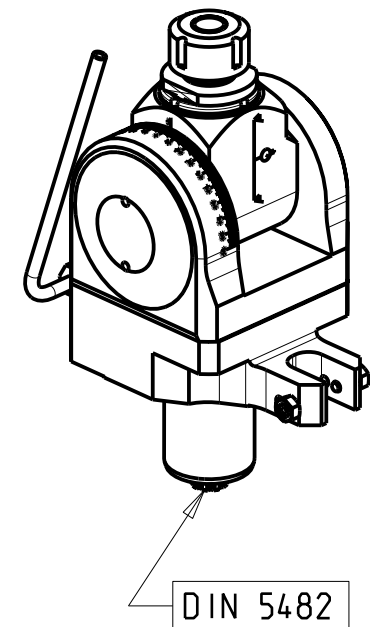
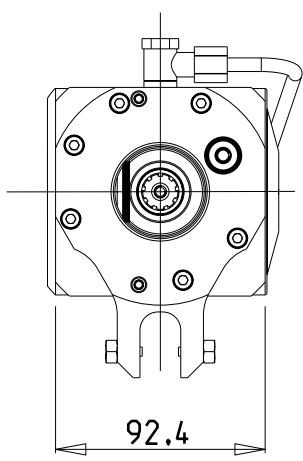
PRODUZIONE MODULI ROTANTI



PAGINA KIA015-1-60



versione sx  
left version  
version links



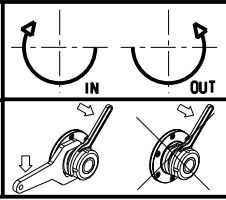
DIN 5482

Cod. MT	Mandrino Spindel Spindel	I	RPM	Coppia Max Max Torque Max Drehmoment	Lubrificazione est. Ext. coolant Aussenkuehlung	A	A1	D	L	CHIAVI INCLUDE Keys included Schluessel einbegriffen	
SAU0851120	ER20	1:1	4000	40Nm	X	85.16	-	-	-	CHUB36	CHSTER20
SAU0851125	ER25	1:1	4000	40Nm	X	86.16	-	-	-	CHUB36	CHSTER25
SAU0851516	Ø16x17	1:1	4000	40Nm	X	-	65	16	17	CHUB36	CH_VTCROCE_M08
SAU0851522	Ø22x19	1:1	4000	40Nm	X	-	66	22	19	CHUB36	CH_VTCROCE_M10
SAU0851519	Ø3/4"x3/4"	1:1	4000	40Nm	X	-	65	3/4"	3/4"	CHUB36	CH_VTCROCE_M08

HYUNDAI-W IA (KIA)  
MOD: SKT15LM/LMS - L150LMSA - SKT21LM/LMS - L210LMSA

MODULO MOTORIZZATO ORIENTABILE ±90° VDI40 DIN 5482  
±90° adjustable angle driven tool VDI40 DIN 5482  
Angetriebenes Werkzeug schwenkbar ±90° VDI40 DIN 5482

Subject to change without notice.

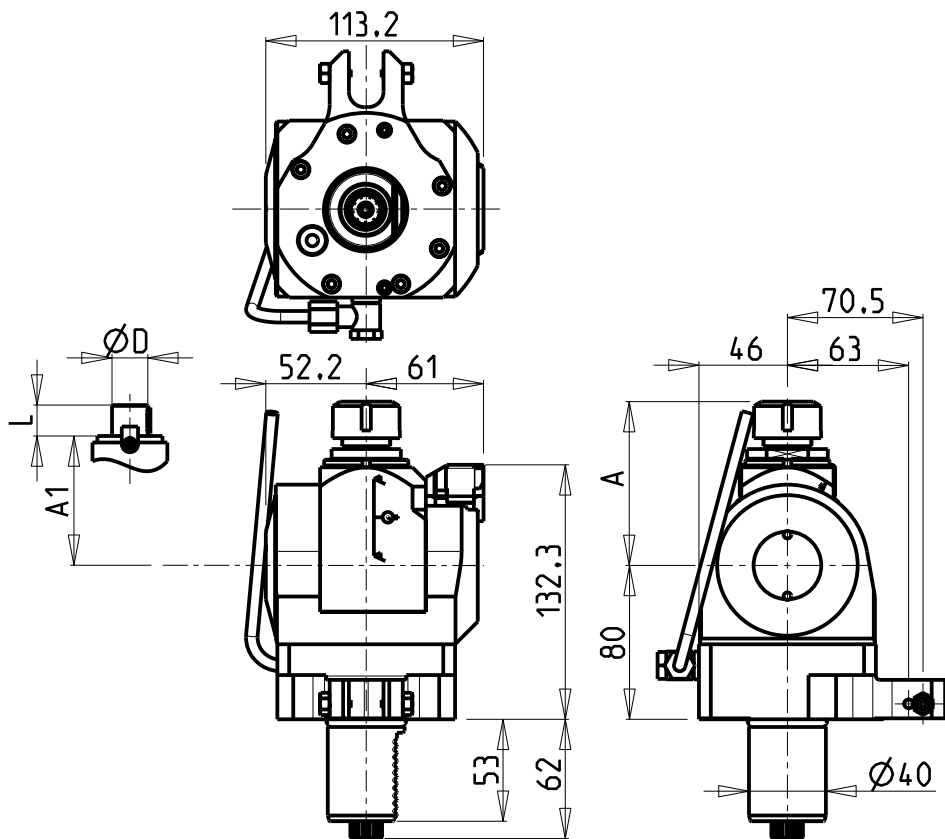


**M.T. srl**  
Via Casino Albini 480  
Tel. 0541/956034-957884  
Fax 0541/956341  
47842 S. GIOVANNI IN M. (RN)  
e-mail: mtma@mtmarchetti.com  
http://www.mtmarchetti.com

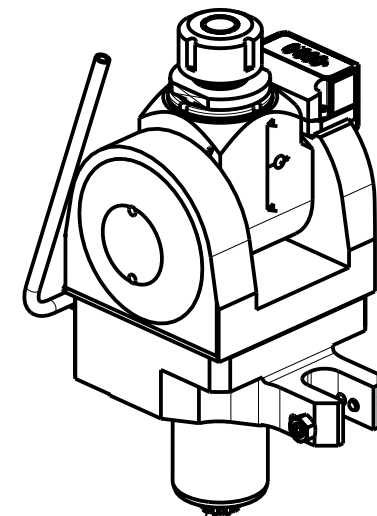
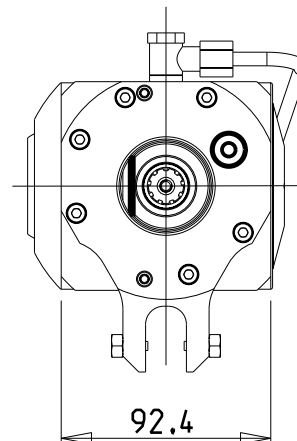
PRODUZIONE MODULI ROTANTI



PAGINA KIA016-1-60



versione sx  
left version  
version links



DIN 5482

Cod. MT	Mandrino Spindle	I	RPM	Coppia Max Max Torque Max Drehmoment	Lubrificazione est. Ext. coolant Aussenkuehlung	A	A1	D	L	CHIAVI INCLUDE Keys included Schluessel einbegriffen	
SAU0771120	ER20	1:1	4000	40Nm	X	85.16	-	-	-	CHUB36	CHSTER20
SAU0771125	ER25	1:1	4000	40Nm	X	86.16	-	-	-	CHUB36	CHSTER25
SAU0771516	Ø16x17	1:1	4000	40Nm	X	-	65	16	17	CHUB36	CH_VTCROCE_M08
SAU0771522	Ø22x19	1:1	4000	40Nm	X	-	66	22	19	CHUB36	CH_VTCROCE_M10
SAU0771519	Ø3/4"x3/4"	1:1	4000	40Nm	X	-	65	3/4"	3/4"	CHUB36	CH_VTCROCE_M08

HYUNDAI-W IA (KIA)

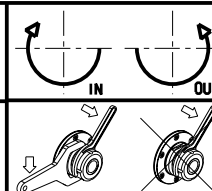
MOD: SKT15LM/LMS - L150LMSA - SKT21LM/LMS - L210LMSA

MODULO MOTORIZZATO ORIENTABILE ±90° CON NONIO DIGITALE VD140 DIN 5482

±90° adjustable angle driven tool with digital display VD140 DIN 5482

Angetriebenes Werkzeug schwenkbar ±90° mit digital display VD140 DIN 5482

Subject to change without notice.



**M.T. srl**

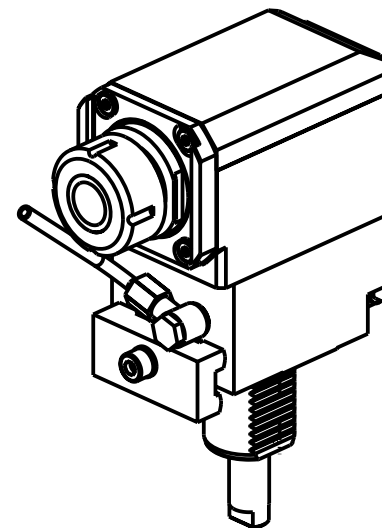
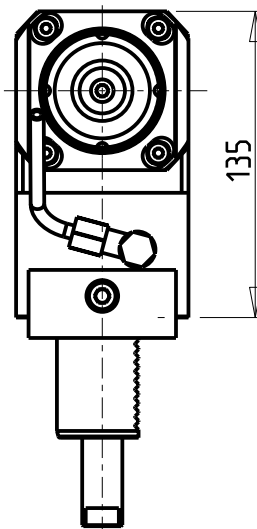
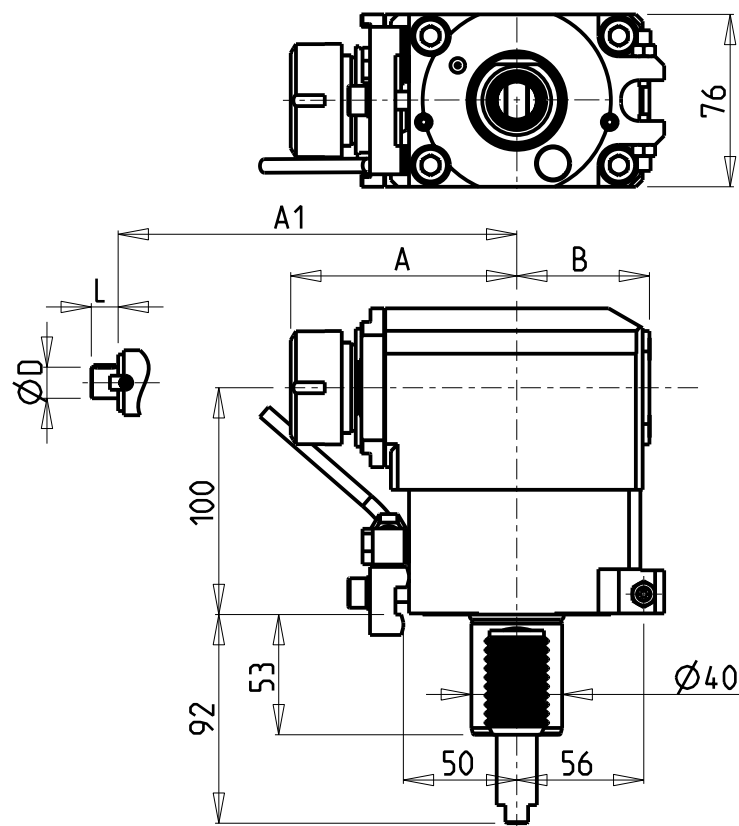
Via Casino Albini 480  
Tel. 0541/956034-957884  
Fax 0541/956341

47842 S. GIOVANNI IN M. (RN)  
e-mail: mtma@mtmarchetti.com  
http://www.mtmarchetti.com

PRODUZIONE MODULI ROTANTI



PAGINA KIA016-1-61



### ATTENZIONE - ATTENTION - ACHTUNG

- Per lo smontaggio degli utensili utilizzare sempre la chiave di contrasto come indicato nel manuale d'uso.
- For disassembly of the tools use always the contrast key as mentioned in the user instructions.
- Fuer das Abmontieren der Werkzeuge immer den Gegenschlüssel benutzen wie in der Bedienungsanleitung erwaeht.

- Chiave inclusa
- Key included
- Schluessel inbegriffen

Cod. MT	Mandrino Spindle Spindel	I	RPM	Coppia Max Max Torque Max Drehmoment	Lubrificazione int. Coolant through Innenkuhlung	Lubrificazione est. Ext. coolant Aussenkuhlung	A	A1	B	D	L	CHIAVI NON INCLUSE Keys not included Schluessel nicht einbegriffen	
KIA0010132	ER32	1:1	4000	70Nm	-	X	99.7	-	58.5	-	-	OKU0650004	CHSTER32
KIA0010232	ER32	1:1	4000	70Nm	P=70bar	X	99.7	-	69.5	-	-	OKU0650004	CHSTER32
KIA0010140	ER40	1:1	4000	70Nm	-	X	103.7	-	58.5	-	-	OKU0650004	CHSTER40
KIA0010240	ER40	1:1	4000	70Nm	P=70bar	X	103.7	-	69.5	-	-	OKU0650004	CHSTER40
253KIA_R22_40A00	Ø22x19	1:1	4000	70Nm	-	X	-	78.5	58.5	22	19	CHUB41	CH_VTCROCE_M10
253KIA_R27_40A00	Ø27x21	1:1	4000	70Nm	-	X	-	78.5	58.5	27	21	CHUB41	CH_VTCROCE_M12

HYUNDAI-W IA (KIA)

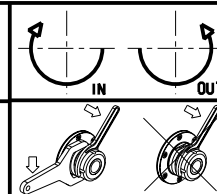
MOD: SKT28LM - L280LM

MODULO MOTORIZZATO ASSIALE VDI40

Axial driven tool VDI40

Axial angetriebenes Werkzeug VDI40

Subject to change without notice.



**M.T. srl**

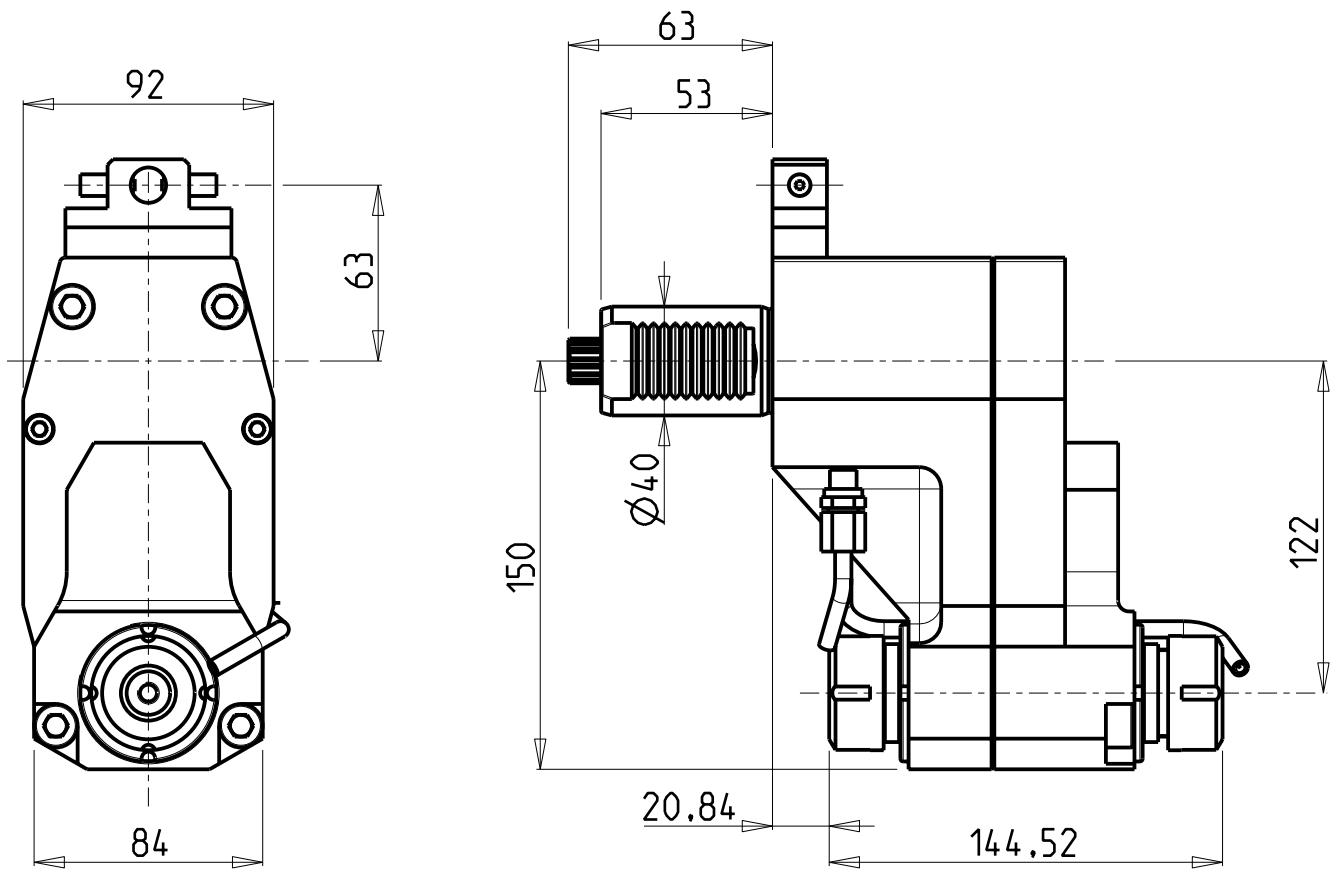
Via Casino Albini 480  
Tel. 0541/956034-957884  
Fax 0541/956341  
47842 S. GIOVANNI IN M. (RN)  
e-mail: mtma@mtmarchetti.com  
http://www.mtmarchetti.com

PRODUZIONE MODULI ROTANTI



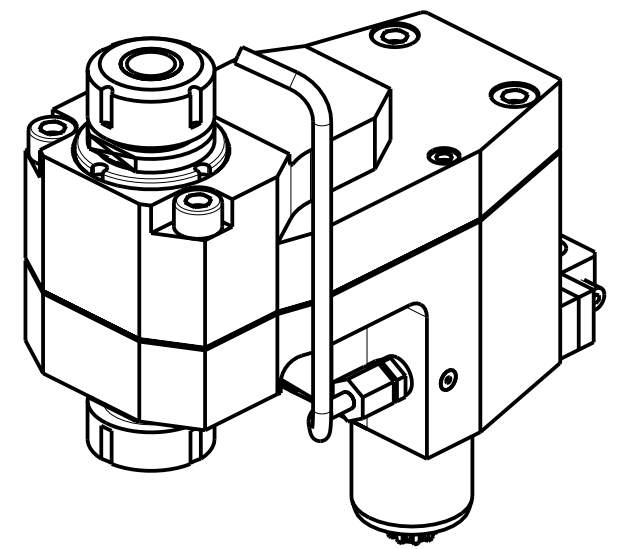
PAGINA KIA150-1-10





**ATTENZIONE - ATTENTION - ACHTUNG**

- Per lo smontaggio degli utensili utilizzare sempre la chiave di contrasto come indicato nel manuale d'uso.
- For disassembly of the tools use always the contrast key as mentioned in the user instructions.
- Fuer das Abmontieren der Werkzeuge immer den Gegenschlüssel benutzen wie in der Bedienungsanleitung erwaeht.



Cod. MT	Mandrino Spindle Spindel	I	RPM	Coppia Max Max Torque Max Drehmoment	Lubrificazione est. Ext. coolant Aussenkuehlung	CHIAVI NON INCLUSE Keys not included Schluesssel nicht einbegriffen	
254K1A_A25_40D00	ER25+ER25	1:1	4000	70Nm	X	CHUB36	CHSTER25

HYUNDAI-W IA (K1A)

MOD: SKT15LM/LMS - L150LMSA - SKT21LM/LMS - L210LMSA

MODULO MOTORIZZATO ASSIALE BISPORGENTE ARRETRATO VDI40 DIN5482

Axial rear-set opposite face twin driven tool VDI40 DIN5482

Axial angetriebenes Werkzeug halb vospringend zurueckversetzt VDI40 DIN5482

Subject to change without notice.

**M.T. srl**  
Via Casino Albini 480  
Tel. 0541/956034-957884  
Fax 0541/956341  
47842 S. GIOVANNI IN M. (RN)  
e-mail: mtma@mtmarchetti.com  
http://www.mtmarchetti.com

PRODUZIONE MODULI ROTANTI



PAGINA KIA243-1-10

