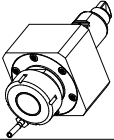
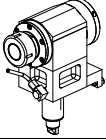

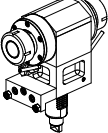
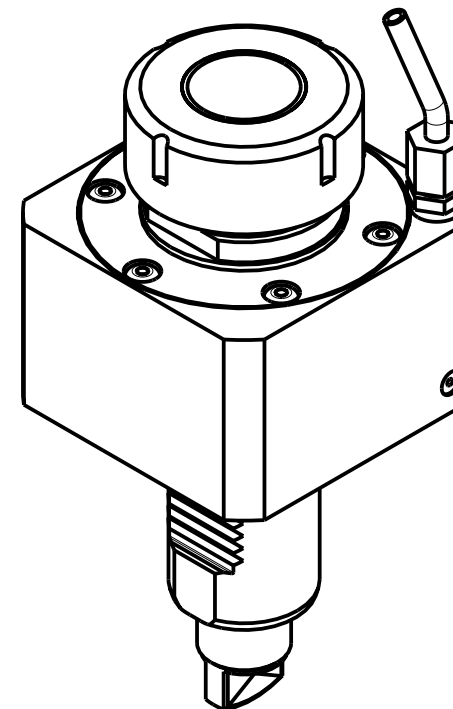
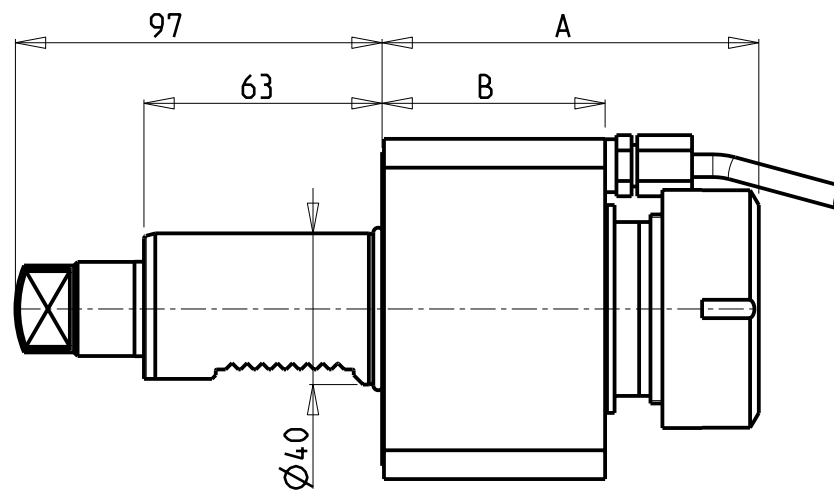
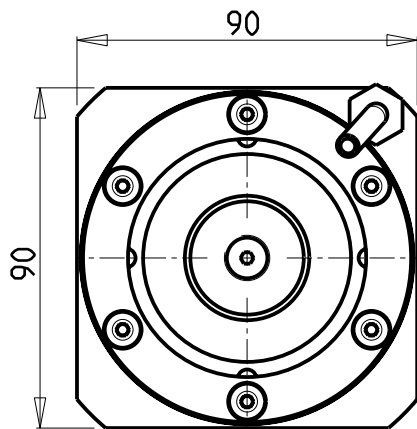


		PAGINA Page Seite
<p><b>MODULO MOTORIZZATO RADIALE</b> Radial driven tool Radial angetriebenes Werkzeug</p>		MZT010.2.00
<p><b>MODULO MOTORIZZATO ASSIALE</b> Axial driven tool Axial angetriebenes Werkzeug</p>		MZT150.2.10
<p><b>MODULO MOTORIZZATO ASSIALE PER CONTROMANDRINO</b> Axial driven tool sub spindle side Axial angetriebenes Werkzeug fuer Gegenspindel</p>		MZT155.2.10
<p><b>MODULO MOTORIZZATO ASSIALE BISPORGENTE</b> Axial opposite face driven tool Axial angetriebenes Werkzeug halb vorspringend</p>		MZT240.2.10



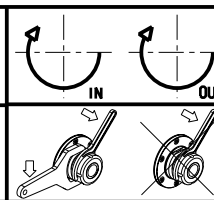


Cod. MT	Mandrino Spindel Spindel	I	RPM	Coppia Max Max Torque Max Drehmoment	Lubrificazione int. Coolant through Innenkühlung	Lubrificazione est. Ext. coolant Aussenkühlung	A	B	CHIAVI NON INCLUSE Keys not included Schlüssel nicht einbegriffen	
MMT0020140	ER40	1:1	6000	70Nm		X	99.66	59	CHUB46	CHSTER40
MMT0020240	ER40	1:1	6000	70Nm	P=30bar	X	112.66	72	CHUB46	CHSTER40

DMG-MORI  
MOD: MT2000/2500 - ZT2500

MODULO MOTORIZZATO RADIALE  
Radial driven tool  
Radial angetriebenes Werkzeug

Subject to change without notice.



**M.T. srl**  
Via Casino Albini 480  
Tel. 0541/956034-957884  
Fax 0541/956341  
47842 S. GIOVANNI IN M. (RN)  
e-mail: mtma@mtmarchetti.com  
http://www.mtmarchetti.com

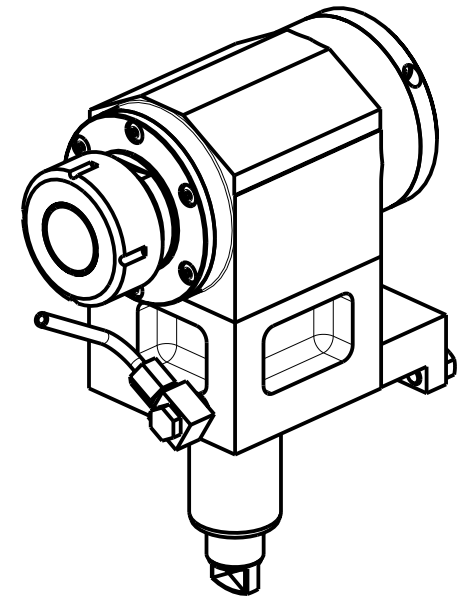
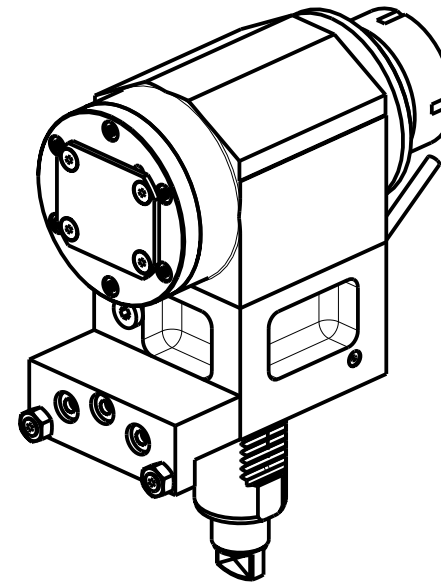
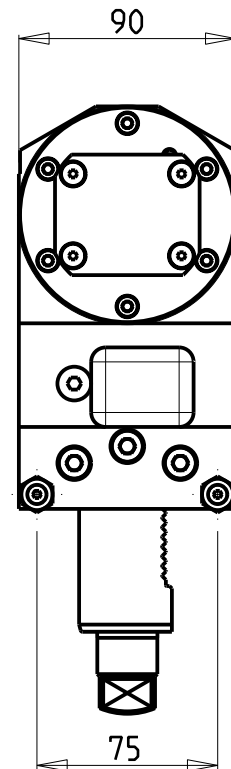
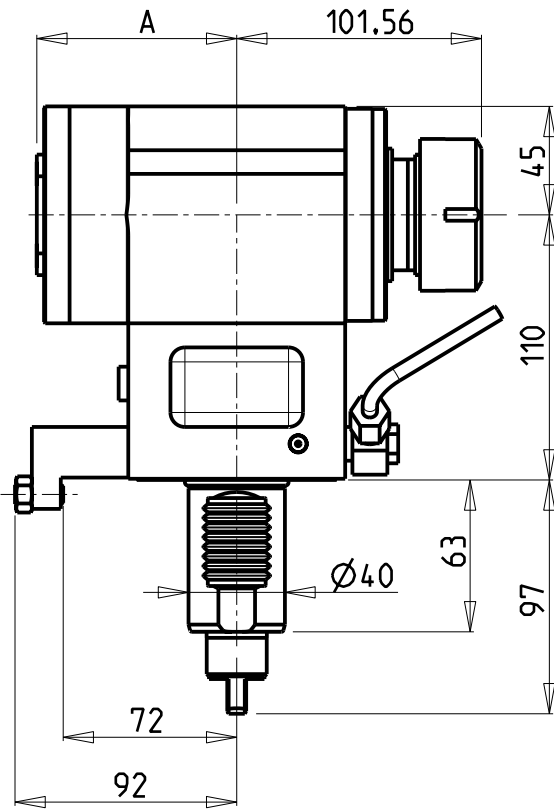
PRODUZIONE MODULI ROTANTI



PAGINA MZT010-2-00

**ATTENZIONE - ATTENTION - ACHTUNG**

- Per lo smontaggio degli utensili utilizzare sempre la chiave di contrasto come indicato nel manuale d'uso.
- For disassembly of the tools use always the contrast key as mentioned in the user instructions.
- Fuer das Abmontieren der Werkzeuge immer den Gegenschlüssel benutzen wie in der Bedienungsanleitung erwaeht.

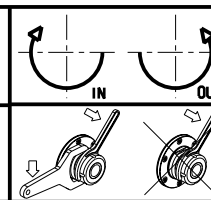


Cod. MT	Mandrino Spindle Spindel	I	RPM	Coppia Max Max Torque Max Drehmoment	Lubrificazione int. Coolant through Innenkuehlung	Lubrificazione est. Ext. coolant Aussenkuehlung	A	CHIAVI NON INCLUSE Keys not included Schlüssel nicht einbegriffen	
MMT0010140	ER40	1:1	6000	70Nm		X	82.95	CHUB46	CHSTER40
MMT0010340	ER40	1:1	6000	70Nm	P=70bar	X	106.45	CHUB46	CHSTER40

DMG-MORI  
MOD: MT2000/2500 - ZT2500

MODULO MOTORIZZATO ASSIALE  
Axial driven tool  
Axial angetriebenes Werkzeug

Subject to change without notice.

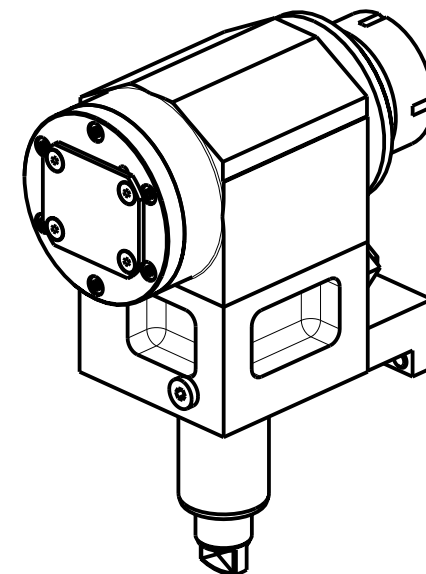
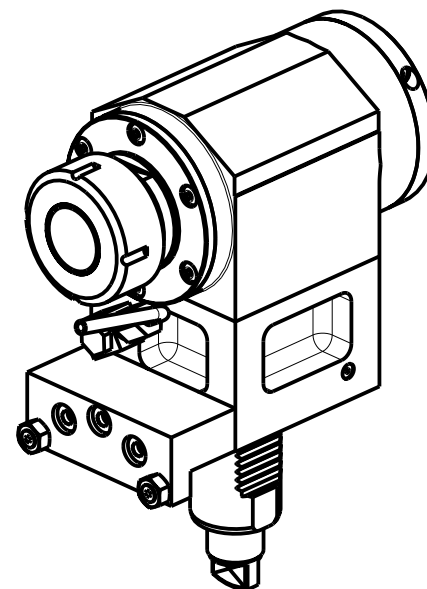
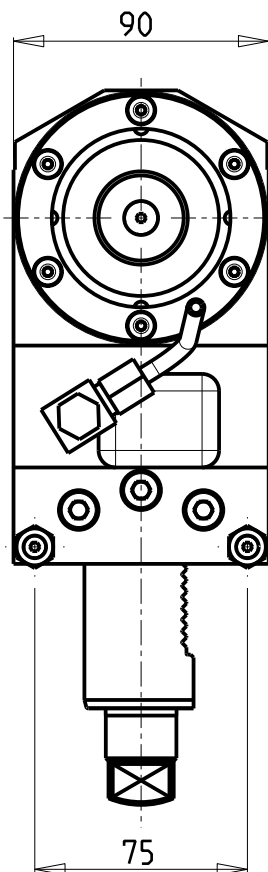
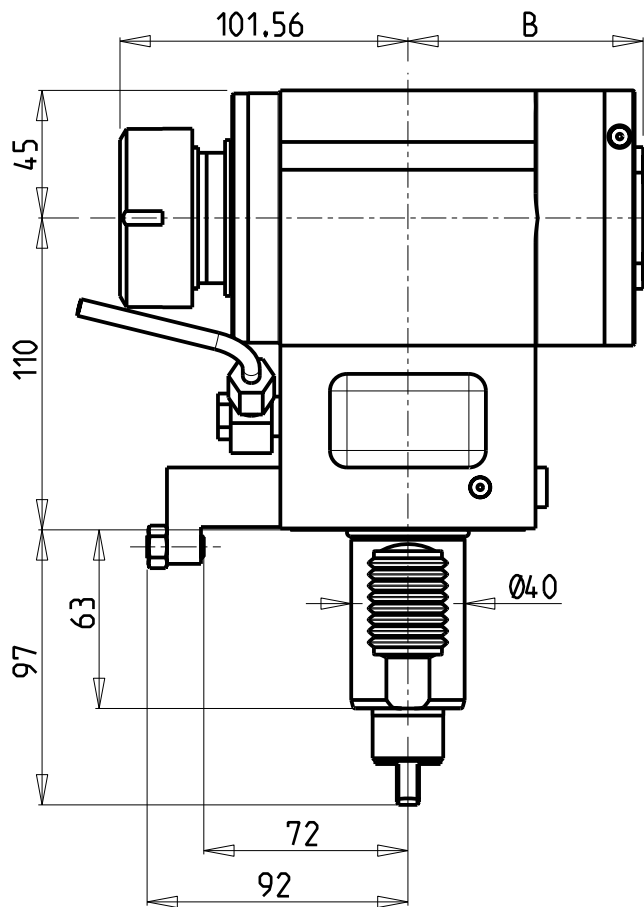


**M.T. srl**  
Via Casino Albini 480  
Tel. 0541/956034-957884  
Fax 0541/956341  
47842 S. GIOVANNI IN M. (RN)  
e-mail: mtma@mtmarchetti.com  
http://www.mtmarchetti.com

PRODUZIONE MODULI ROTANTI



PAGINA MZT150-2-10



### ATTENZIONE - ATTENTION - ACHTUNG

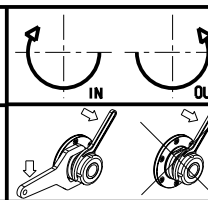
- Per lo smontaggio degli utensili utilizzare sempre la chiave di contrasto come indicato nel manuale d'uso.
- For disassembly of the tools use always the contrast key as mentioned in the user instructions.
- Fuer das Abmontieren der Werkzeuge immer den Gegenschlüssel benutzen wie in der Bedienungsanleitung erwaehnt.

Cod. MT	Mandrino Spindle Spindel	I	RPM	Coppia Max Max Torque Max Drehmoment	Lubrificazione int. Coolant through Innenkuehlung	Lubrificazione est. Ext. coolant Aussenkuehlung	B	CHIAVI NON INCLUSE Keys not included Schluesssel nicht einbegriffen	
MMT0011040	ER40	1:1	6000	70Nm		X	82.95	CHUB46	CHSTER40
MMT0011140	ER40	1:1	6000	70Nm	P=70bar	X	106.45	CHUB46	CHSTER40

DMG-MORI  
MOD: MT2000/2500 - ZT2500

MODULO MOTORIZZATO ASSIALE PER CONTROMANDRINO  
Axial driven tool sub spindle side  
Axial angetriebenes Werkzeug fuer Gegenspindel

Subject to change without notice.

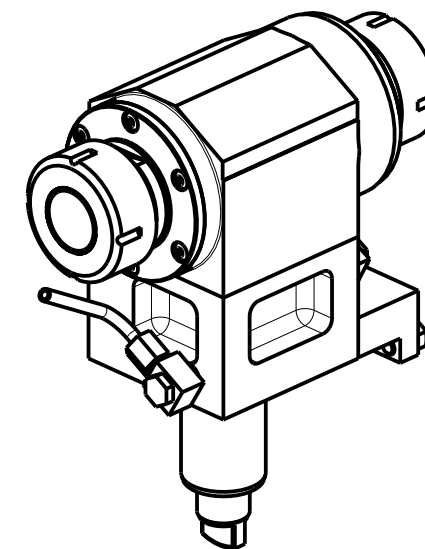
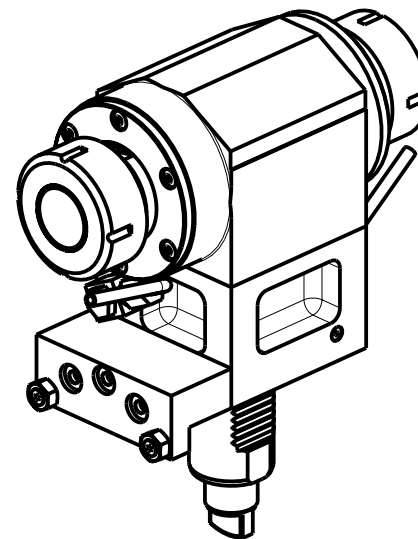
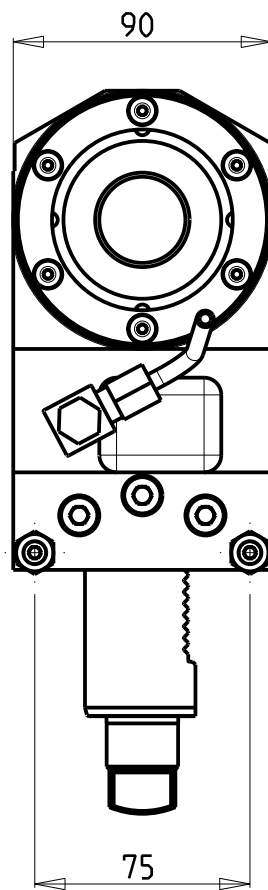
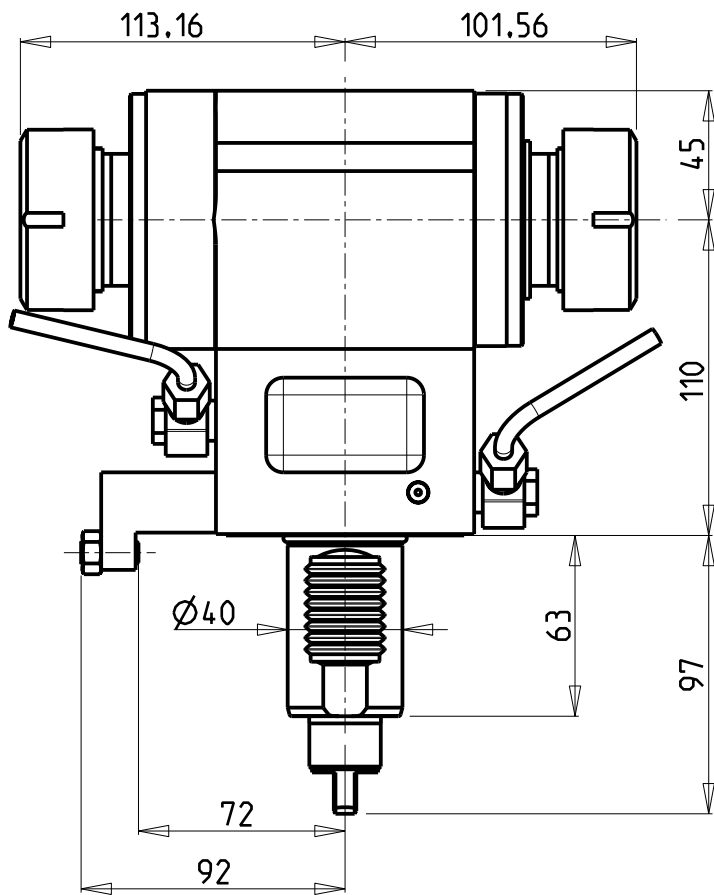


**M.T. srl**  
Via Casino Albini 480  
Tel. 0541/956034-957884  
Fax 0541/956341  
47842 S. GIOVANNI IN M. (RN)  
e-mail: mtma@mtmarchetti.com  
http://www.mtmarchetti.com

PRODUZIONE MODULI ROTANTI



PAGINA MZT155-2-10



### ATTENZIONE - ATTENTION - ACHTUNG

- Per lo smontaggio degli utensili utilizzare sempre la chiave di contrasto come indicato nel manuale d'uso.
- For disassembly of the tools use always the contrast key as mentioned in the user instructions.
- Fuer das Abmontieren der Werkzeuge immer den Gegenschlüssel benutzen wie in der Bedienungsanleitung erwaehnt.

Cod. MT	Mandrino Spindle Spindel	I	RPM	Coppia Max Max Torque Max Drehmoment	Lubrificazione est. Ext. coolant Aussenkuehlung	CHIAVI NON INCLUSE Keys not included Schluesssel nicht einbegriffen	
MMT0010240	ER40+ER40	1:1	6000	70Nm	X	CHUB46	CHSTER40

DMG-MORI

MOD: MT2000/2500 - ZT2500

MODULO MOTORIZZATO ASSIALE BISPORGENTE

Axial opposite face driven tool

Axial angetriebenes Werkzeug halb vorspringend

Subject to change without notice.

**M.T. srl**

Via Casino Albini 480  
Tel. 0541/956034-957884  
Fax 0541/956341  
47842 S. GIOVANNI IN M. (RN)  
e-mail: mtma@mtmarchetti.com  
http://www.mtmarchetti.com

PRODUZIONE MODULI ROTANTI



PAGINA MZT240-2-10