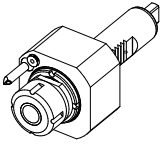
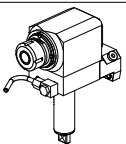
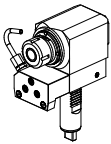
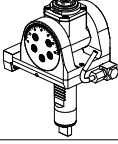
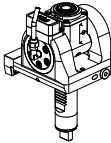
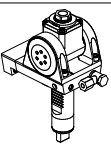
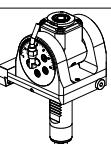
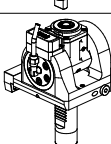
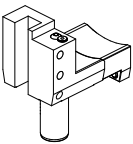
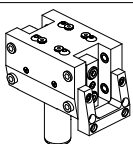
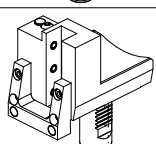
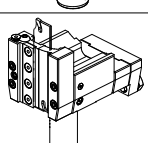
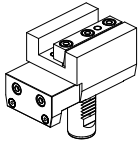
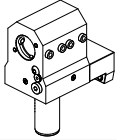
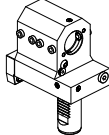
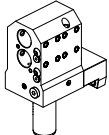
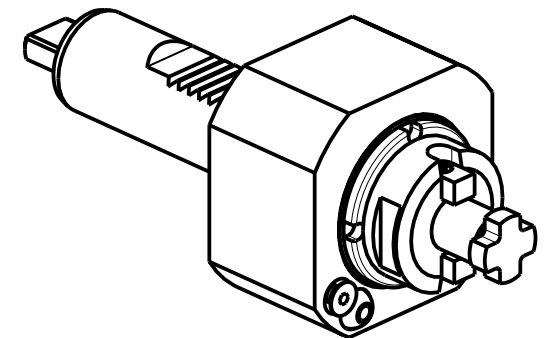
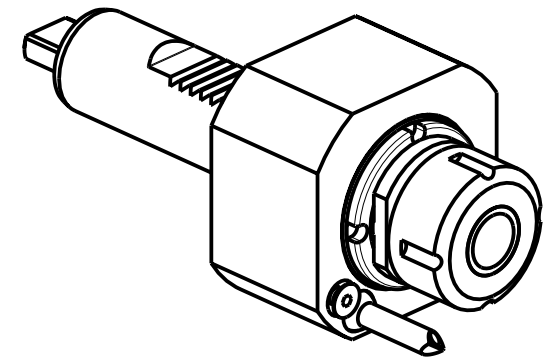
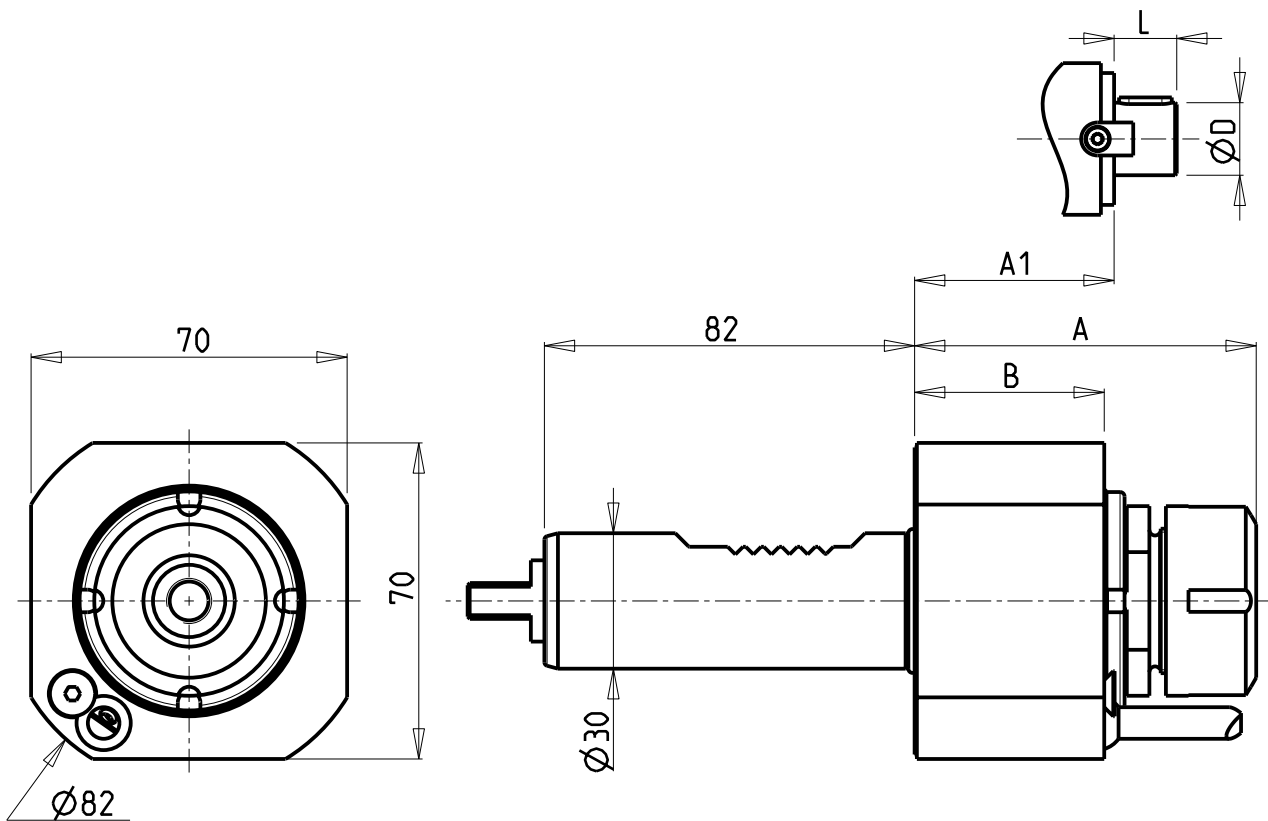


		PAGINA Page Seite
MODULO MOTORIZZATO RADIALE Radial driven tool Radial angetriebenes Werkzeug		MZT010.1.00
MODULO MOTORIZZATO ASSIALE Axial driven tool Axial angetriebenes Werkzeug		MZT150.1.10
MODULO MOTORIZZATO ASSIALE PER CONTROMANDRINO Axial driven tool sub spindle side Axial angetriebenes Werkzeug fuer Gegenspindel		MZT155.1.10
MODULO MOTORIZZATO ORIENTABILE ±90° ±90° adjustable angle driven tool Angetriebenes Werkzeug schwenkbar ±90°		MZT335.1.00
MODULO MOTORIZZATO ORIENTABILE ±90° CON NONIO DIGITALE ±90° adjustable angle driven tool with digital display Angetriebenes Werkzeug schwenkbar ±90° mit digital display		MZT335.1.01
MODULO MOTORIZZATO ORIENTABILE ±90° ±90° adjustable angle driven tool Angetriebenes Werkzeug schwenkbar ±90°		MZT335.1.10
MODULO MOTORIZZATO ORIENTABILE ±90° MOLTIPLICATO 1:2 ±90° adjustable angle driven tool geared-up 1:2 Angetriebenes Werkzeug schwenkbar ±90° uebersetzt 1:2		MZT336.1.00
MODULO MOTOR. ORIENTABILE ±90° MOLTIPL. 1:2 CON NONIO DIGITALE ±90° adjustable angle driven tool geared-up 1:2 with digital display Angetriebenes Werkzeug schwenkbar ±90° uebersetzt 1:2 mit digital display		MZT336.1.01
PORTAUTENSILE RADIALE SINGOLO QD=20mm / QD=3/4" Radial single static tool QD=20mm / QD=3/4" Radial Single-Werkzeughalter QD=20mm / QD=3/4"		MZT420.1.00
PORTAUTENSILE RADIALE DOPPIO QD=20mm / QD=3/4" Radial double static tool QD=20mm / QD=3/4" Radial Doppel-Werkzeughalter QD=20mm / QD=3/4"		MZT450.1.00
PORTAUT. RADIALE SINGOLO PER CONTROMANDRINO QD=20mm / QD=3/4" Radial single static tool sub spindle side QD=20mm / QD=3/4" Radial Single-Werkzeughalter fuer Gegenspindel QD=20mm / QD=3/4"		MZT480.1.00
PORTAUTENSILE PER LAMA DOPPIO Radial double blade holder Radial Doppel-Abstechhalter		MZT520.1.10

		PAGINA Page Seite
<p>PORTAUTENSILE ASSIALE SINGOLO QD=20mm / QD=3/4" Axial single static tool QD=20mm / QD=3/4" Axial Single-Werkzeughalter QD=20mm / QD=3/4"</p>		MZT550.1.00
<p>PORTAUTENSILE ASSIALE PER BARENO Ø 32mm / Ø 1 1/4" / Ø 40mm H=65mm Axial single boring bar holder Ø32mm / Ø 1 1/4" / Ø 40mm H=65mm Axial Bohrhalter Ø32mm / Ø 1 1/4" / Ø 40mm H=65mm</p>		MZT650.1.10
<p>PORTABARENO ARRETR. LATO MANDRINO, PROLUNGATO LATO CONTROM. Rear-set boring bar holder on main spindle side, extended on subspindle side Bohrhalter zurueckversetzt auf Hauptspindel-seite, verlaengert auf Gegenspindel-seite</p>		MZT850.1.00
<p>PORTAUTENSILE ASSIALE PER BARENO 2 POSIZIONI Ø 25mm / Ø 1" Axial double boring bar holder Ø25mm / Ø 1" Axial Bohrhalter 2 Positionen Ø25mm / Ø 1"</p>		MZT864.1.00



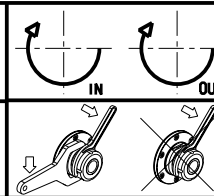
Cod. MT	Mandrino Spindel Spindel	I	RPM	Coppia Max Max Torque Max Drehmoment	Lubrificazione int. Coolant through Innenkuehlung	Lubrificazione est. Ext. coolant Aussenkuehlung	A	A1	B	D	L	CHIAVI NON INCLUSE Keys not included Schluessel nicht einbegriffen	
M0150125	ER25	1:1	6000	40Nm		X	75.66	-	42	-	-	CHUB36	CHSTER25
M0151125	ER25	1:1	6000	40Nm	P=30bar		95.66	-	62	-	-	CHUB36	CHSTER25
M0151617	Ø16x17	1:1	6000	40Nm		X	-	61	42	16	17	CHUB36	CH_VTCROCE_M08 ■
M0152219	Ø22x19	1:1	6000	40Nm		X	-	59	42	22	19	CHUB36	CH_VTCROCE_M10 ■

• Chiave inclusa
• Key included
• Schluessel inbegriffen

DMG-MORI
MOD: ZT1000/1500 12/16 STAZIONI

MODULO MOTORIZZATO RADIALE
Radial driven tool
Radial angetriebenes Werkzeug

Subject to change without notice.

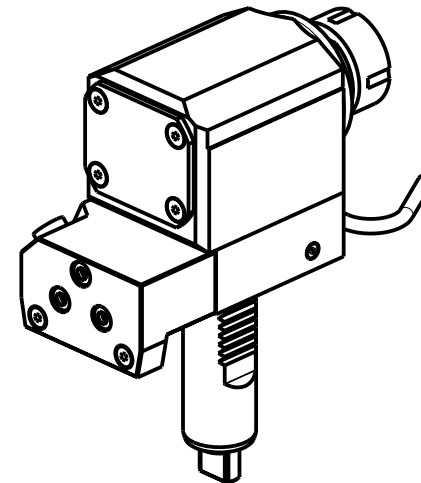
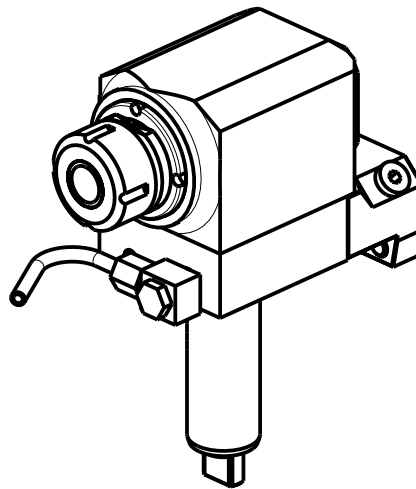
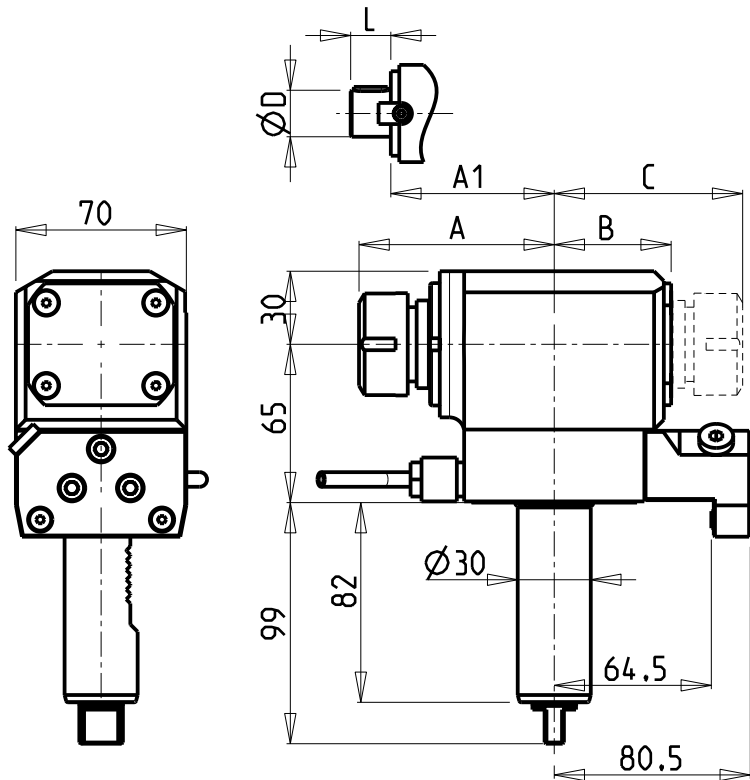


M.T. srl
Via Casino Albini 480
Tel. 0541/956034-957884
Fax 0541/956341
47842 S. GIOVANNI IN M. (RN)
e-mail: mtma@mtmarchetti.com
http://www.mtmarchetti.com

PRODUZIONE MODULI ROTANTI



PAGINA MZT010-1-00



ATTENZIONE - ATTENTION - ACHTUNG

- Per lo smontaggio degli utensili utilizzare sempre la chiave di contrasto come indicato nel manuale d'uso.
- For disassembly of the tools use always the contrast key as mentioned in the user instructions.
- Fuer das Abmontieren der Werkzeuge immer den Gegenschlüssel benutzen wie in der Bedienungsanleitung erwaeht.

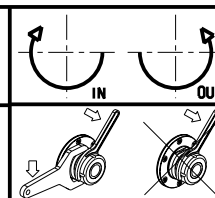
- Chiave inclusa
- Key included
- Schlüssel inbegriffen

Cod. MT	Cod. MORI-SEIKI	Mandrino Spindle Spindel	I	RPM	Coppia Max Max Torque Max Drehmoment	Lubr.interna Coolant through Innenkuehlung	Lubr.esterna Ext. coolant Aussenkuehlung	A	A1	B	C	D	L	CHIAVI NON INCLUDE Keys not included Schlüssel nicht einbegriffen	
M0121425	T32406	ER25	1:1	6000	40Nm		X	80.16	-	48	-	-	-	CHUB36	CHSTER25
M0121525	T32415	ER25	1:1	6000	40Nm	P=70bar	X	80.16	-	59	-	-	-	CHUB36	CHSTER25
M0132525	T32408	ER25+ER25	1:1	6000	40Nm		X	80.16	-	-	73.66	-	-	CHUB36	CHSTER25
M0121617	-	Ø16x17	1:1	6000	40Nm		X	-	63	48	-	16	17	CHUB36	CH_VTCROCE_M08 ▪
M0122219	-	Ø22x19	1:1	6000	40Nm		X	-	63	48	-	22	19	CHUB36	CH_VTCROCE_M10 ▪
M0122721	-	Ø27x21	1:1	6000	40Nm		X	-	65.5	48	-	27	21	CHUB36	CH_VTCROCE_M12 ▪

DMG-MORI
MOD: ZT1000/1500 12/16 STAZIONI

MODULO MOTORIZZATO ASSIALE
Axial driven tool
Axial angetriebenes Werkzeug

Subject to change without notice.

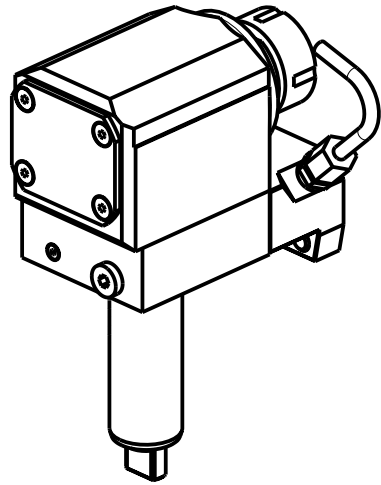
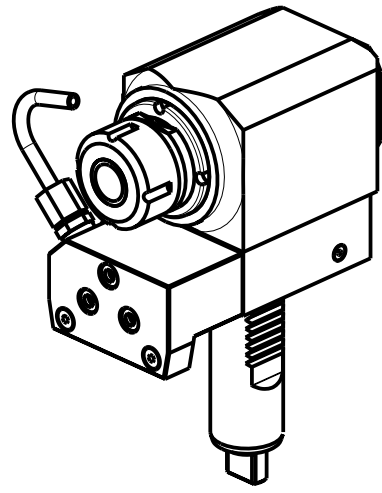
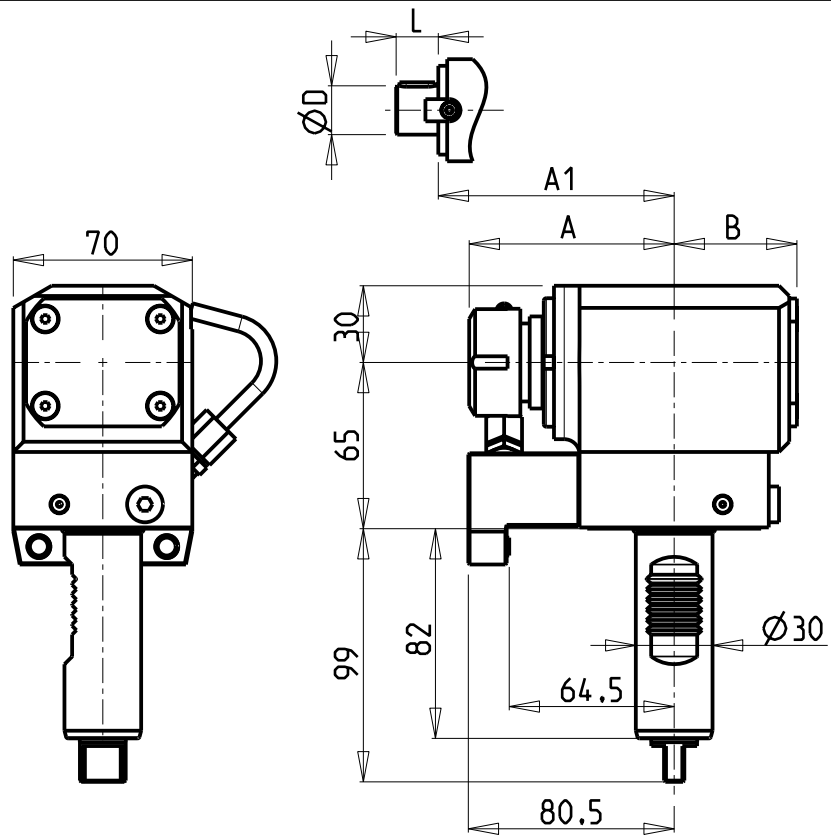


M.T. srl
Via Casino Albini 480
Tel. 0541/956034-957884
Fax 0541/956341
47842 S. GIOVANNI IN M. (RN)
e-mail: mtma@mtmarchetti.com
http://www.mtmarchetti.com

PRODUZIONE MODULI ROTANTI



PAGINA MZT150-1-10



ATTENZIONE - ATTENTION - ACHTUNG

- Per lo smontaggio degli utensili utilizzare sempre la chiave di contrasto come indicato nel manuale d'uso.
- For disassembly of the tools use always the contrast key as mentioned in the user instructions.
- Fuer das Abmontieren der Werkzeuge immer den Gegenschlüssel benutzen wie in der Bedienungsanleitung erwaeht.

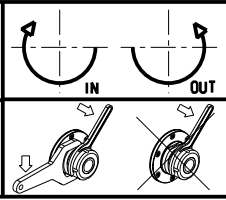
- Chiave inclusa
- Key included
- Schluessel inbegriffen

Cod. MT	Cod. MORI-SEIKI	Mandrino Spindle Spindel	I	RPM	Coppia Max Max Torque Max Drehmoment	Lubrificazione int. Coolant through Innenkuehlung	Lubrificazione est. Ext. coolant Aussenkuehlung	A	A1	B	D	L	CHIAVI NON INCLUSE Keys not included Schluessel nicht inbegriffen	
M0141425	T32407	ER25	1:1	6000	40Nm		X	80.16	-	48	-	-	CHUB36	CHSTER25
M0141525	-	ER25	1:1	6000	40Nm	P=70bar	X	80.16	-	59	-	-	CHUB36	CHSTER25
M0141617	-	Ø16x17	1:1	6000	40Nm		X	-	63	48	16	17	CHUB36	CH_VTCROCE_M08 •
M0142219	-	Ø22x19	1:1	6000	40Nm		X	-	63	48	22	19	CHUB36	CH_VTCROCE_M10 •
M0142721	-	Ø27x21	1:1	6000	40Nm		X	-	65.5	48	27	21	CHUB36	CH_VTCROCE_M12 •

DMG-MORI
MOD: ZT1000/1500 12/16 STAZIONI

MODULO MOTORIZ. ASSIALE PER CONTROMANDR.
Axial driven tool sub spindle side
Axial angetriebenes Werkzeug fuer Gegenspindel

Subject to change without notice.

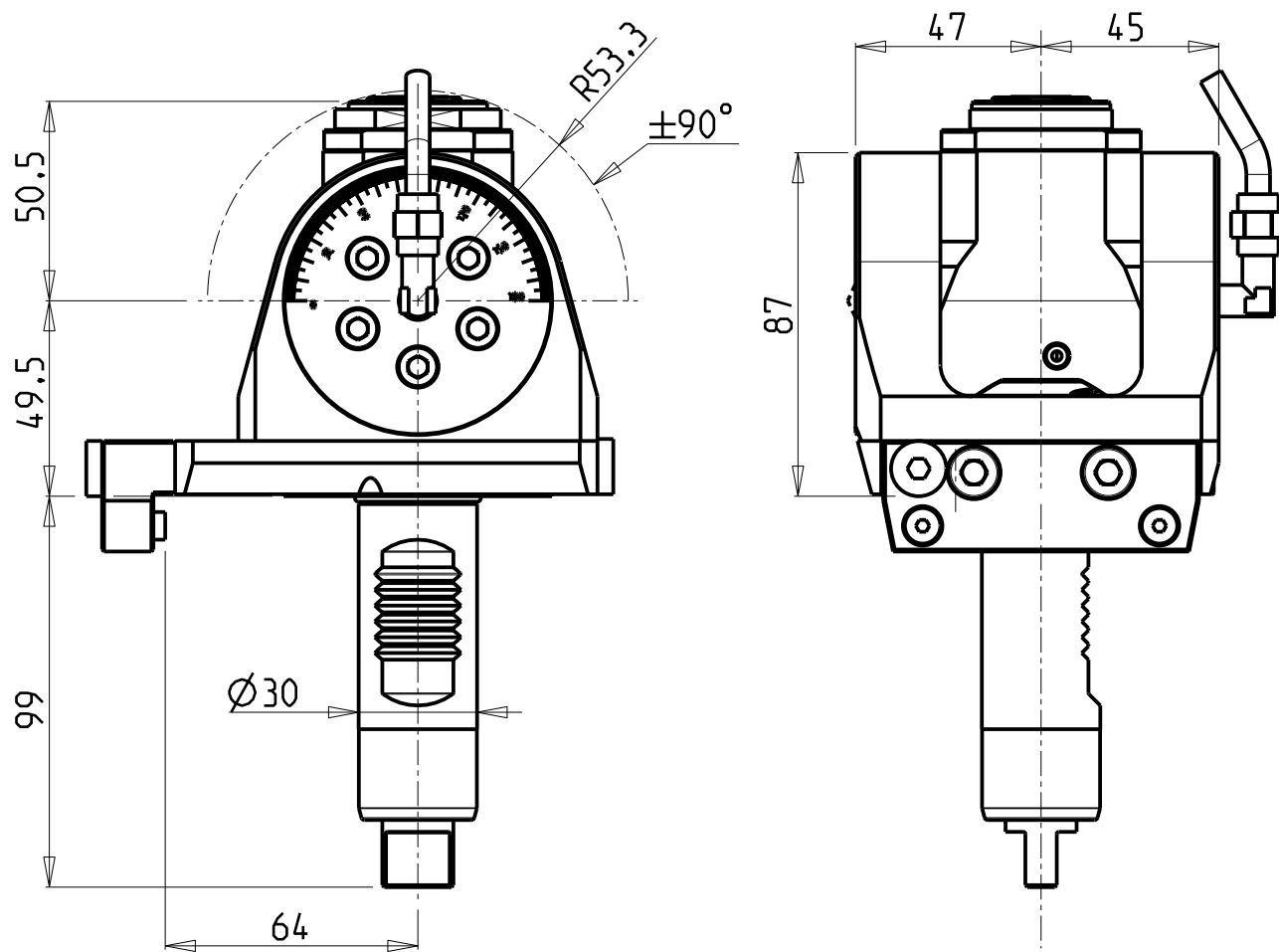


M.T. srl
Via Casino Albini 480
Tel. 0541/956034-957884
Fax 0541/956341
47842 S. GIOVANNI IN M. (RN)
e-mail: mtma@mtmarchetti.com
http://www.mtmarchetti.com

PRODUZIONE MODULI ROTANTI

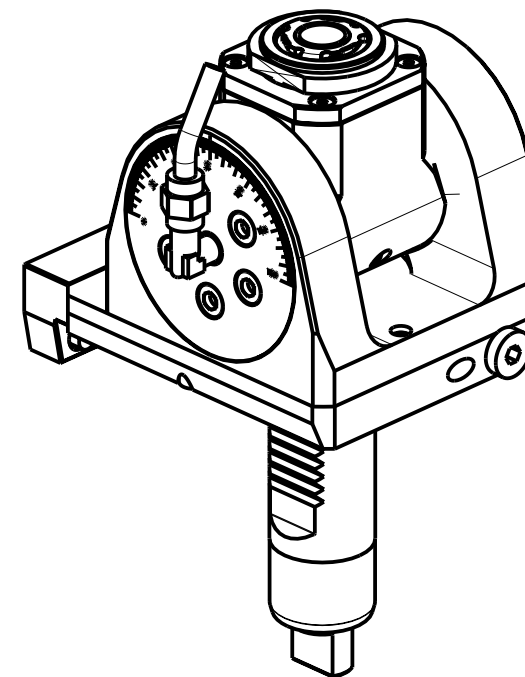


PAGINA MZT155-1-10



ATTENZIONE - ATTENTION - ACHTUNG

- Per lo smontaggio degli utensili utilizzare sempre la chiave di contrasto come indicato nel manuale d'uso.
- For disassembly of the tools use always the contrast key as mentioned in the user instructions.
- Fuer das Abmontieren der Werkzeuge immer den Gegenschlüssel benutzen wie in der Bedienungsanleitung erwäehnt.

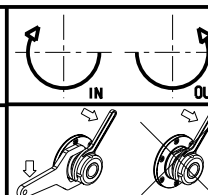


Cod. MT	Mandrino Spindle Spindel	I	RPM	Coppia Max Max Torque Max Drehmoment	Lubrificazione int. Coolant through Innenkuehlung	Lubrificazione est. Ext. coolant Aussenkuehlung	CHIAVI INCLUSE Keys included Schluessel inbegriffen		
MZT0050120	ER A 20	1:1	6000	30Nm		X	CHUB36	CHUB22	CHTAER20ZC
MZT0050220	ER A 20	1:1	6000	30Nm	P=70bar	X	CHUB36	CHUB22	CHTAER20ZC

DMG-MORI
MOD: ZT1000/1500 12 STAZIONI

MODULO MOTORIZZATO ORIENTABILE ±90°
±90° adjustable angle driven tool
Angetriebenes Werkzeug schwenkbar ±90°

Subject to change without notice.



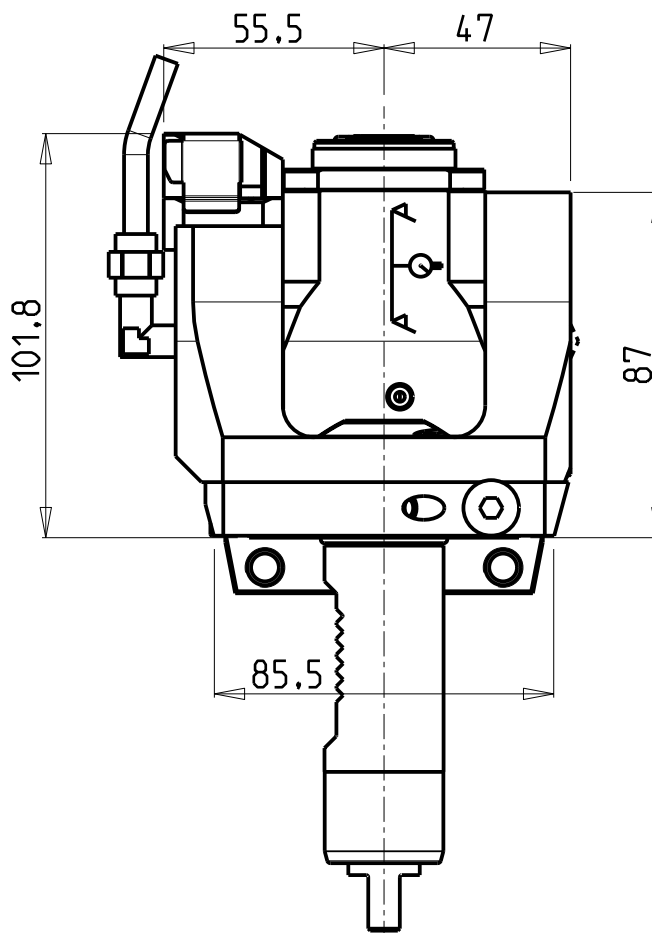
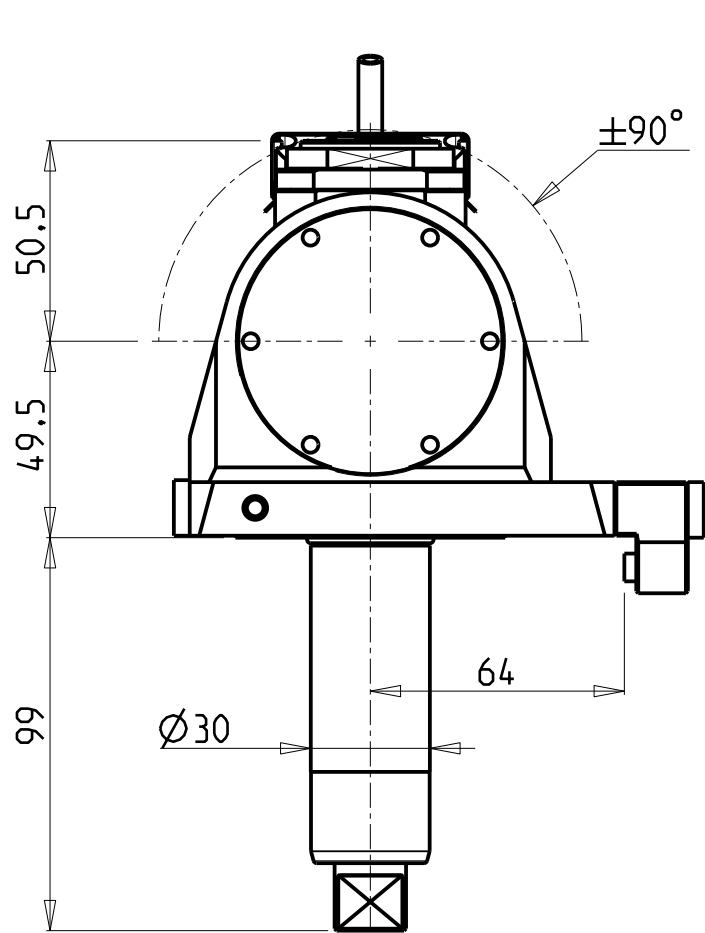
M.T. srl

Via Casino Albini 480
Tel. 0541/956034-957884
Fax 0541/956341
47842 S. GIOVANNI IN M. (RN)
e-mail: mtma@mtmarchetti.com
http://www.mtmarchetti.com

PRODUZIONE MODULI ROTANTI

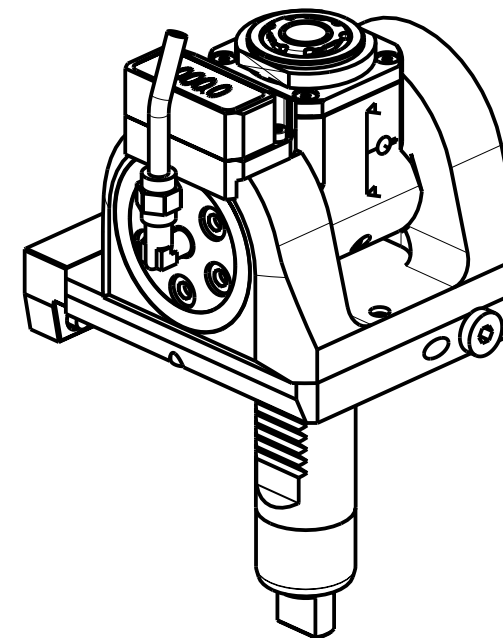


PAGINA MZT335-1-00



ATTENZIONE - ATTENTION - ACHTUNG

- Per lo smontaggio degli utensili utilizzare sempre la chiave di contrasto come indicato nel manuale d'uso.
- For disassembly of the tools use always the contrast key as mentioned in the user instructions.
- Fuer das Abmontieren der Werkzeuge immer den Gegenschlüssel benutzen wie in der Bedienungsanleitung erwaeht.

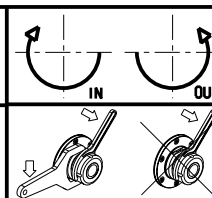


Cod. MT	Mandrino Spindle Spindel	I	RPM	Coppia Max Max Torque Max Drehmoment	Lubrificazione int. Coolant through Innenkuehlung	Lubrificazione est. Ext. coolant Aussenkuehlung	CHIAVI INCLUSE Keys included Schluessel inbegriffen		
MZT0055120	ER A 20	1:1	6000	30Nm	-	X	CHUB36	CHUB22	CHTAER20ZC
MZT0055220	ER A 20	1:1	6000	30Nm	P=70bar	X	CHUB36	CHUB22	CHTAER20ZC


DMG-MORI
MOD: ZT1000/1500 12 STAZIONI

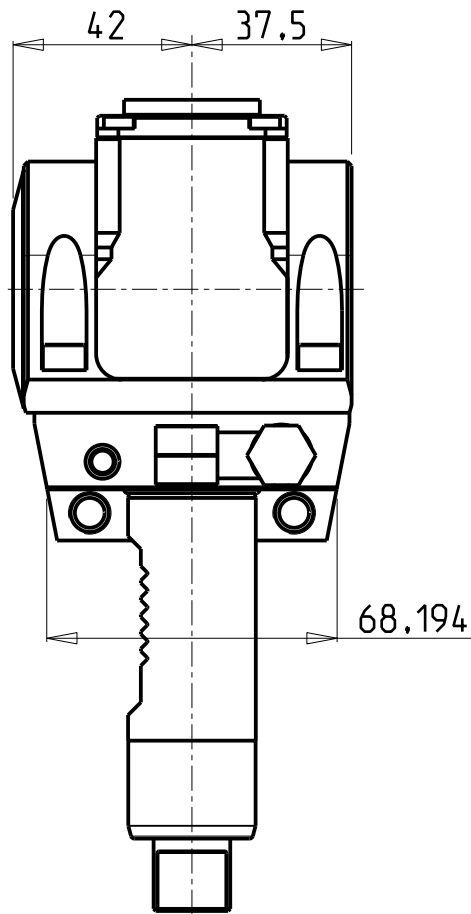
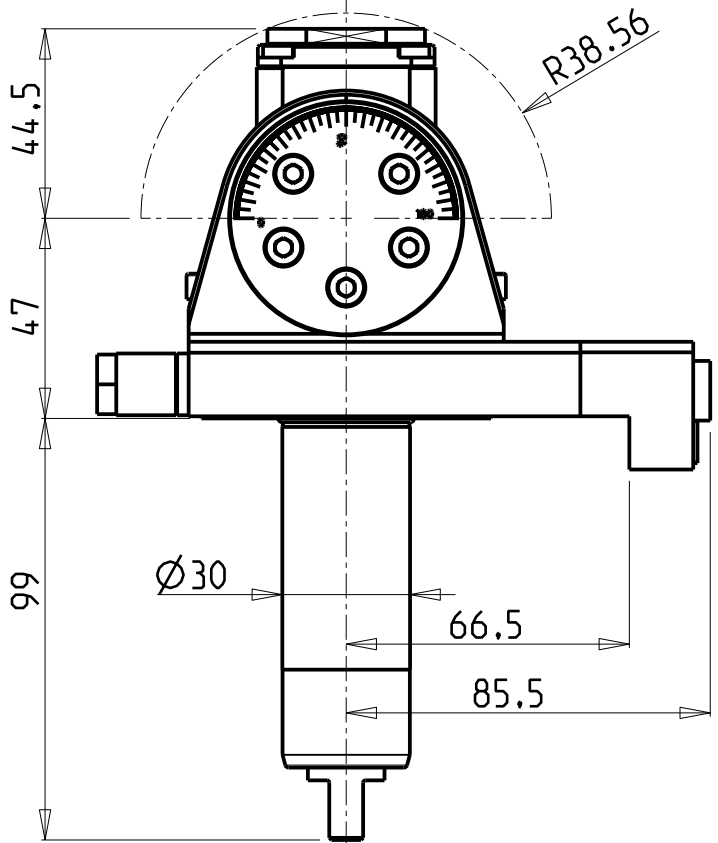
MODULO MOTORIZZATO ORIENTABILE ±90° CON NONIO DIGITALE
±90° adjustable angle driven tool with digital display
Angetriebenes Werkzeug schwenkbar ±90° mit digital display

Subject to change without notice.



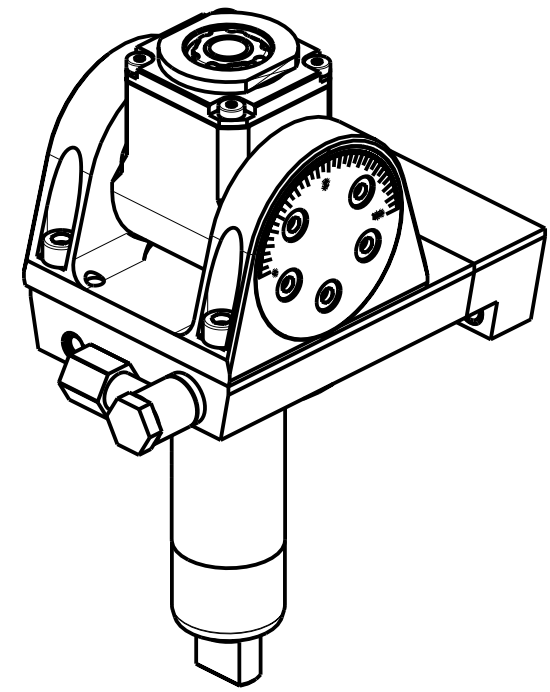
M.T. srl
Via Casino Albini 480
Tel. 0541/956034-957884
Fax 0541/956341
47842 S. GIOVANNI IN M. (RN)
e-mail: mtma@mtmarchetti.com
http://www.mtmarchetti.com

PRODUZIONE MODULI ROTANTI

PAGINA MZT335-1-01



ATTENZIONE - ATTENTION - ACHTUNG

- Per lo smontaggio degli utensili utilizzare sempre la chiave di contrasto come indicato nel manuale d'uso.
- For disassembly of the tools use always the contrast key as mentioned in the user instructions.
- Fuer das Abmontieren der Werkzeuge immer den Gegenschlüssel benutzen wie in der Bedienungsanleitung erwaeht.

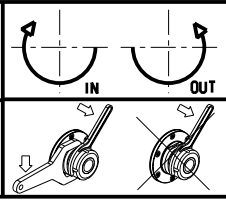


Cod. MT	Mandrino Spindle Spindel	I	RPM	Coppia Max Max Torque Max Drehmoment	Lubrificazione est. Ext. coolant Aussenkuehlung	CHIAVI INCLUSE Keys included Schlüssel inbegriffen		
MZT0040116	ER A 16	1:1	6000	20Nm	X	CHUB19_SP3	CHUB32	CHTAER16ZC

DMG-MORI
MOD: ZT1000/1500 12/16 STAZIONI

MODULO MOTORIZZATO ORIENTABILE ±90°
±90° adjustable angle driven tool
Angetriebenes Werkzeug schwenkbar ±90°

Subject to change without notice.

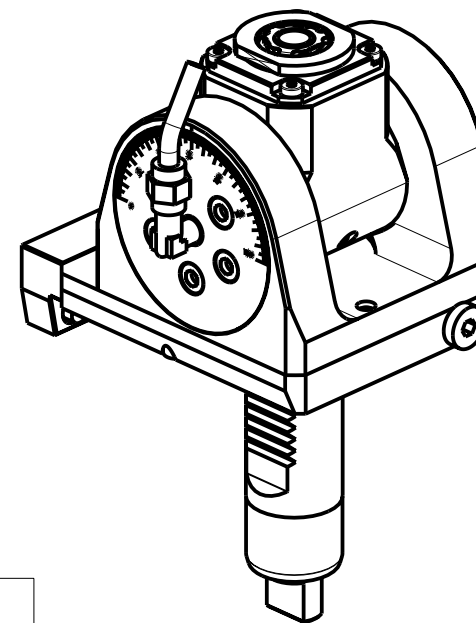
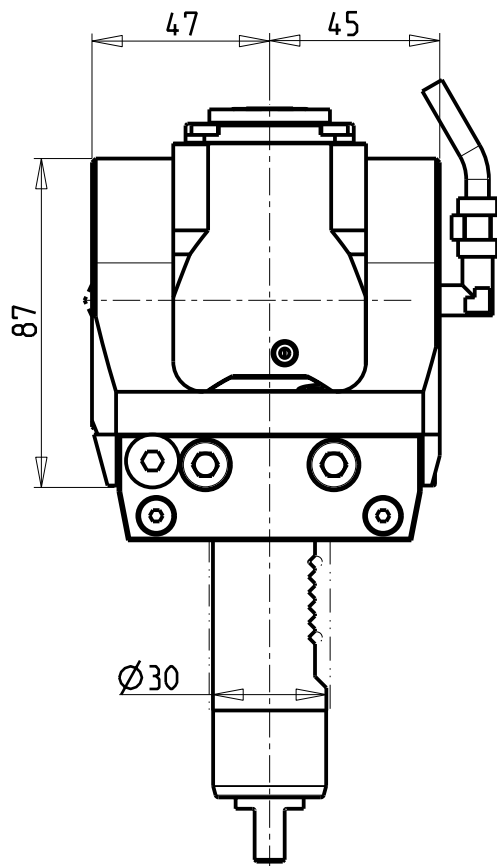
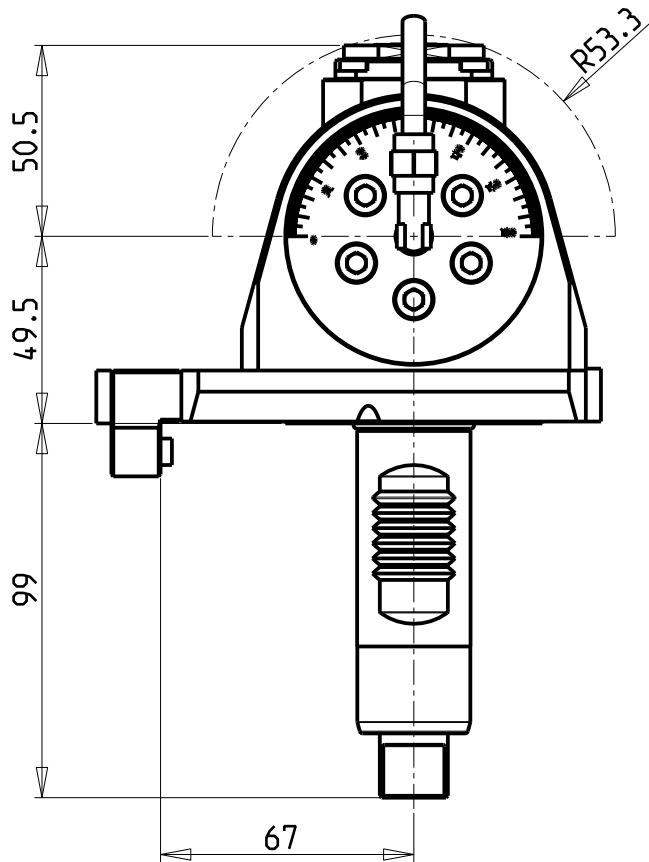


M.T. srl
Via Casino Albini 480
Tel. 0541/956034-957884
Fax 0541/956341
47842 S. GIOVANNI IN M. (RN)
e-mail: mtma@mtmarchetti.com
http://www.mtmarchetti.com

PRODUZIONE MODULI ROTANTI



PAGINA MZT335-1-10



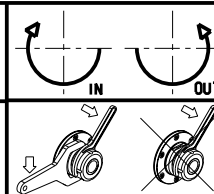
ATTENZIONE - ATTENTION - ACHTUNG

- Per lo smontaggio degli utensili utilizzare sempre la chiave di contrasto come indicato nel manuale d'uso.
- For disassembly of the tools use always the contrast key as mentioned in the user instructions.
- Fuer das Abmontieren der Werkzeuge immer den Gegenschlüssel benutzen wie in der Bedienungsanleitung erwäehnt.

Cod. MT	Mandrino Spindle Spindel	I	RPM	Coppia Max Max Torque Max Drehmoment	Lubrificazione int. Coolant through Innenkuehlung	Lubrificazione est. Ext. coolant Aussenkuehlung	CHIAVI INCLUSE Keys included Schluesssel inbegriffen		
MZT0050316	ERA16	1:2	12000	8Nm		X	CHUB19_SP3	CHUB32	CHTAER16ZC
MZT0050416	ERA16	1:2	12000	8Nm	P=70bar	X	CHUB19_SP3	CHUB32	CHTAER16ZC

DMG-MORI
MOD: ZT1000/1500 12 STAZIONI

MODULO MOTORIZZATO ORIENTABILE +/-90° MOLTIPLICATO I=1:2
+/-90° adjustable angle driven tool geared-up I=1:2
Angetriebenes Werkzeug schwenkbar +/-90° uebersetzt I=1:2



M.T. srl
Via Casino Albini 480
Tel. 0541/956034-957884
Fax 0541/956341
47842 S. GIOVANNI IN M. (RN)
e-mail: mtma@mtmarchetti.com
http://www.mtmarchetti.com

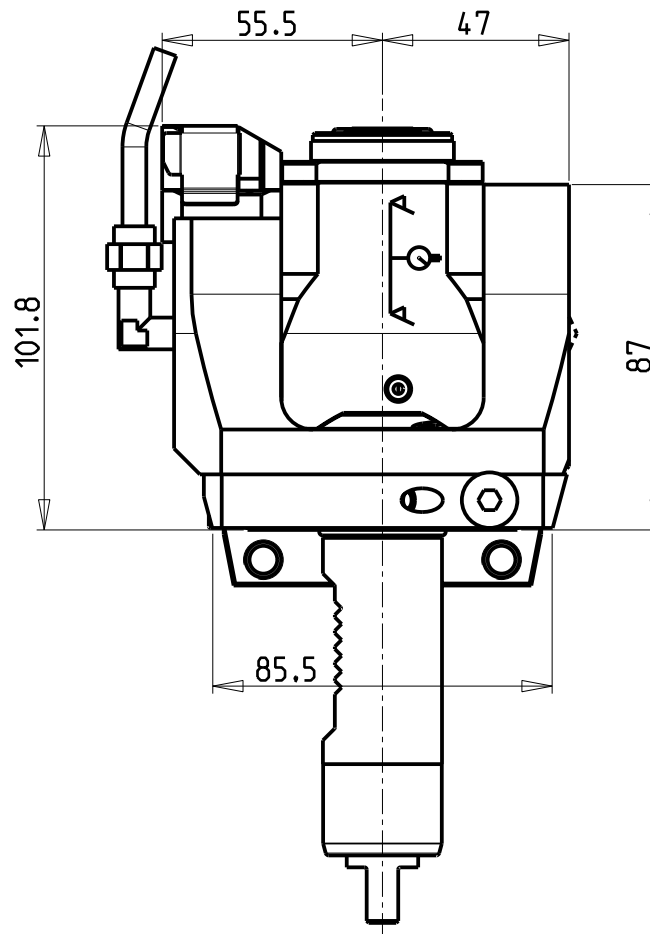
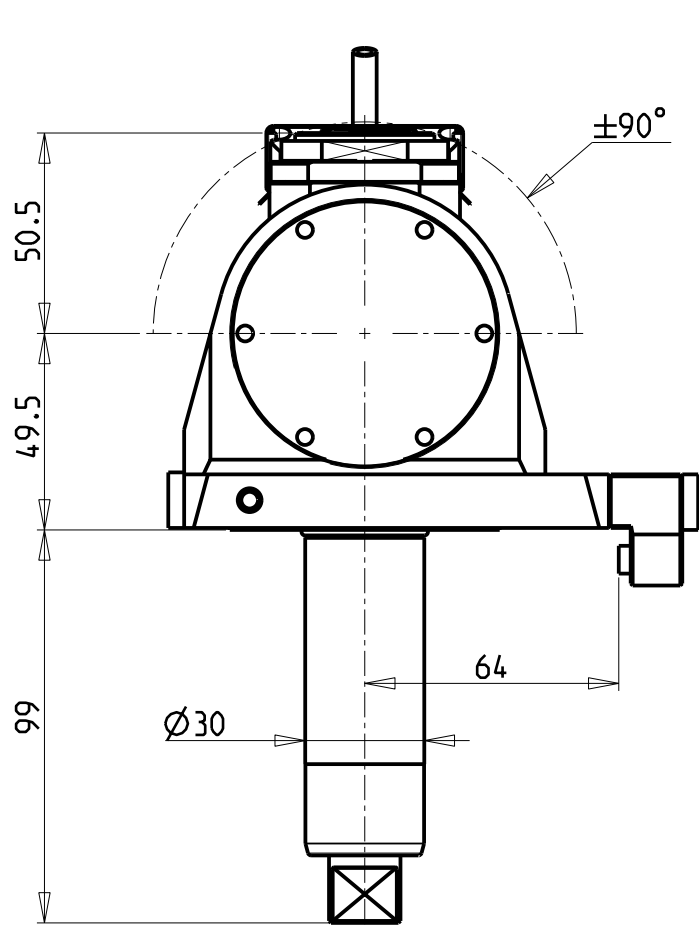
PRODUZIONE MODULI ROTANTI



PAGINA MZT336-1-00

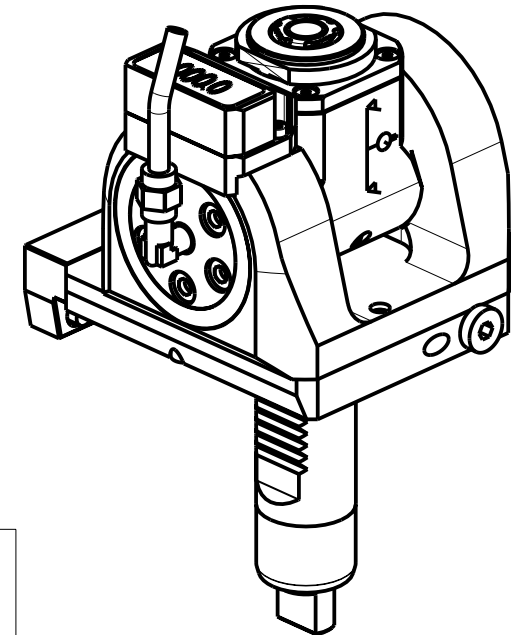
Subject to change without notice.

10/2018



ATTENZIONE - ATTENTION - ACHTUNG

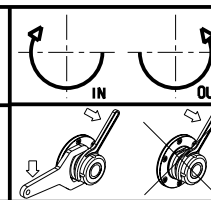
- Per lo smontaggio degli utensili utilizzare sempre la chiave di contrasto come indicato nel manuale d'uso.
- For disassembly of the tools use always the contrast key as mentioned in the user instructions.
- Fuer das Abmontieren der Werkzeuge immer den Gegenschlüssel benutzen wie in der Bedienungsanleitung erwäehnt.



Cod. MT	Mandrino Spindle Spindel	I	RPM	Coppia Max Max Torque Max Drehmoment	Lubrificazione int. Coolant through Innenkuehlung	Lubrificazione est. Ext. coolant Aussenkuehlung	CHIAVI INCLUSE Keys included Schluesssel inbegriffen		
MZT0055316	ERA16	1:2	12000	8Nm	-	X	CHUB19_SP3	CHUB32	CHTAER16ZC
MZT0055416	ERA16	1:2	12000	8Nm	P=70bar	X	CHUB19_SP3	CHUB32	CHTAER16ZC

DMG-MORI
MOD: ZT1000/1500 12 STAZIONI

MODULO MOTORIZZATO ORIENTABILE $\pm 90^\circ$ MOLTIPLICATO 1=1:2 CON NONIO DIGITALE
 $\pm 90^\circ$ adjustable angle driven tool geared-up 1=1:2 with digital display
 Angetriebenes Werkzeug schwenkbar $\pm 90^\circ$ uebersetzt 1=1:2 mit digital display



M.T. srl
 Via Casino Albini 480
 Tel. 0541/956034-957884
 Fax 0541/956341
 47842 S. GIOVANNI IN M. (RN)
 e-mail: mtma@mtmarchetti.com
 http://www.mtmarchetti.com

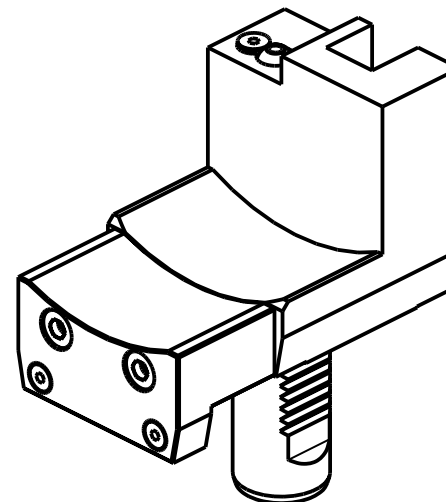
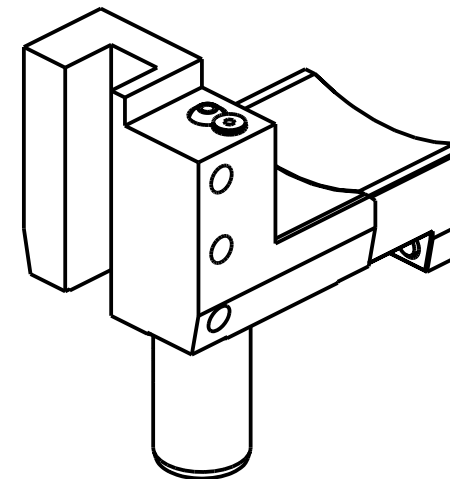
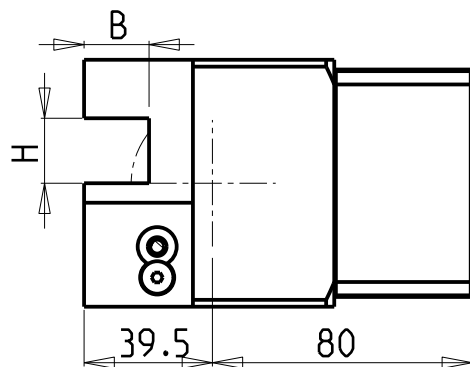
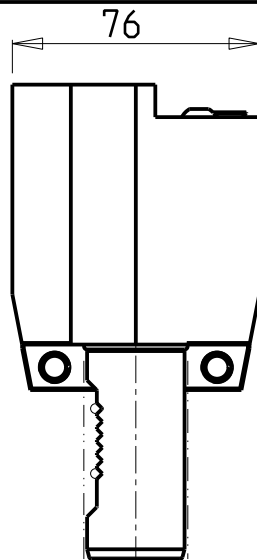
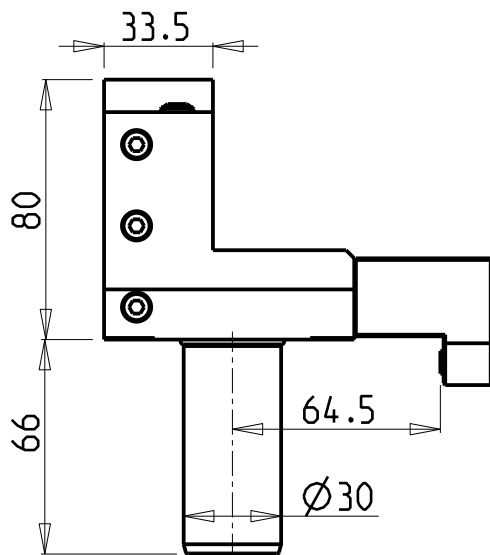
PRODUZIONE MODULI ROTANTI



PAGINA MZT336-1-01

Subject to change without notice.

10/2018



Cod. MT	Cod. MORI-SEIKI	N°Utensili N°Tools N°Werkzeuge	Misure Dimensions Masse	B	H
M0192000	T00336	1	mm	20	20
M0191905	-	1	Inch	3/4"	3/4"

DMG-MORI
MOD: ZT1000/1500 12/16 STAZIONI

PORTAUTENSILE RADIALE SINGOLO QD=20mm / QD=3/4"
Radial single static tool QD=20mm / QD=3/4"
Radial Single-Werkzeughalter QD=20mm / QD=3/4"

Subject to change without notice.

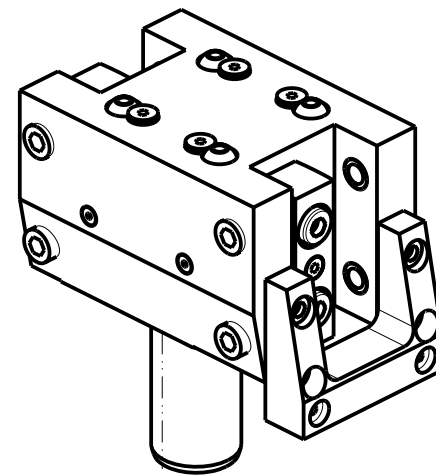
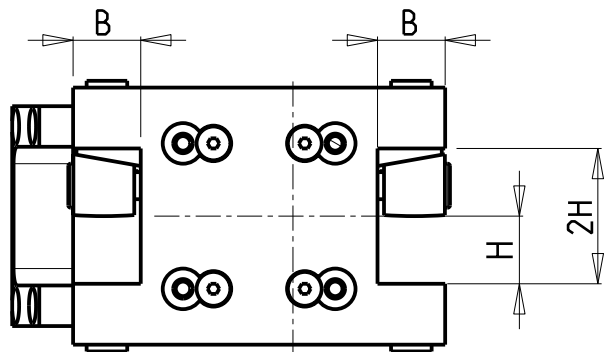
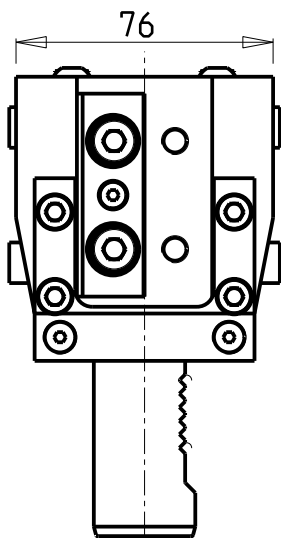
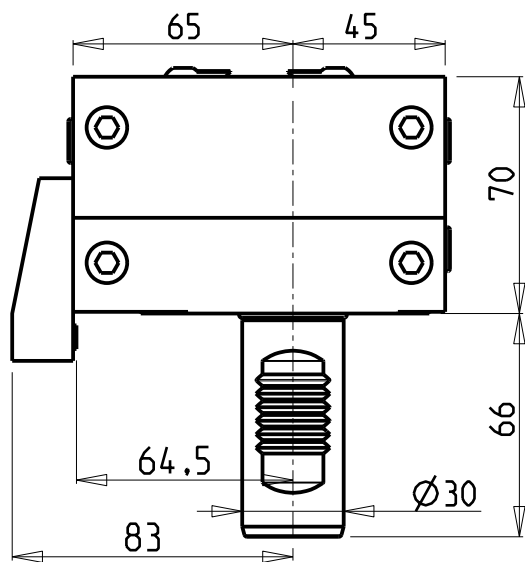
M.T. srl

Via Casino Albini 480
Tel. 0541/956034-957884
Fax 0541/956341
47842 S. GIOVANNI IN M. (RN)
e-mail: mtma@mtmarchetti.com
<http://www.mtmarchetti.com>

PRODUZIONE MODULI ROTANTI



PAGINA MZT420-1-00



Cod. MT	Cod. MORI-SEIKI	N°Utensili N°Tools N°Werkzeuge	Misure Dimensions Masse	B	H
M0172000	T00331	2/4	mm	20	20
M0171905	-	2/4	Inch	3/4"	3/4"

DMG-MORI

MOD: ZT1000/1500 12/16 STAZIONI

PORTAUTENSILE RADIALE DOPPIO QD=20mm / QD=3/4"

Radial double static tool QD=20mm / QD=3/4"

Radial Doppel-Werkzeughalter QD=20mm / QD=3/4"

Subject to change without notice.

M.T. srl

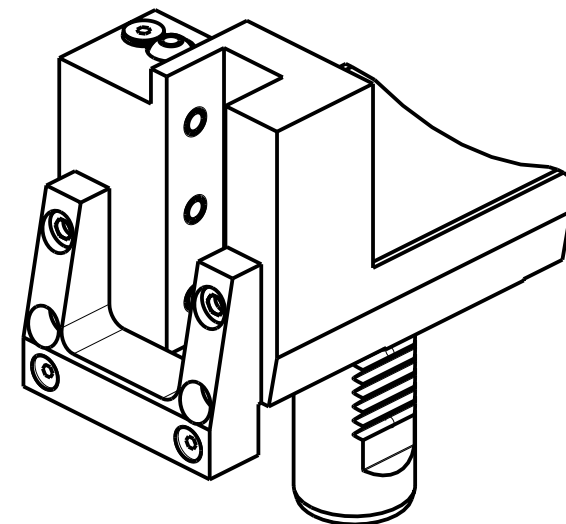
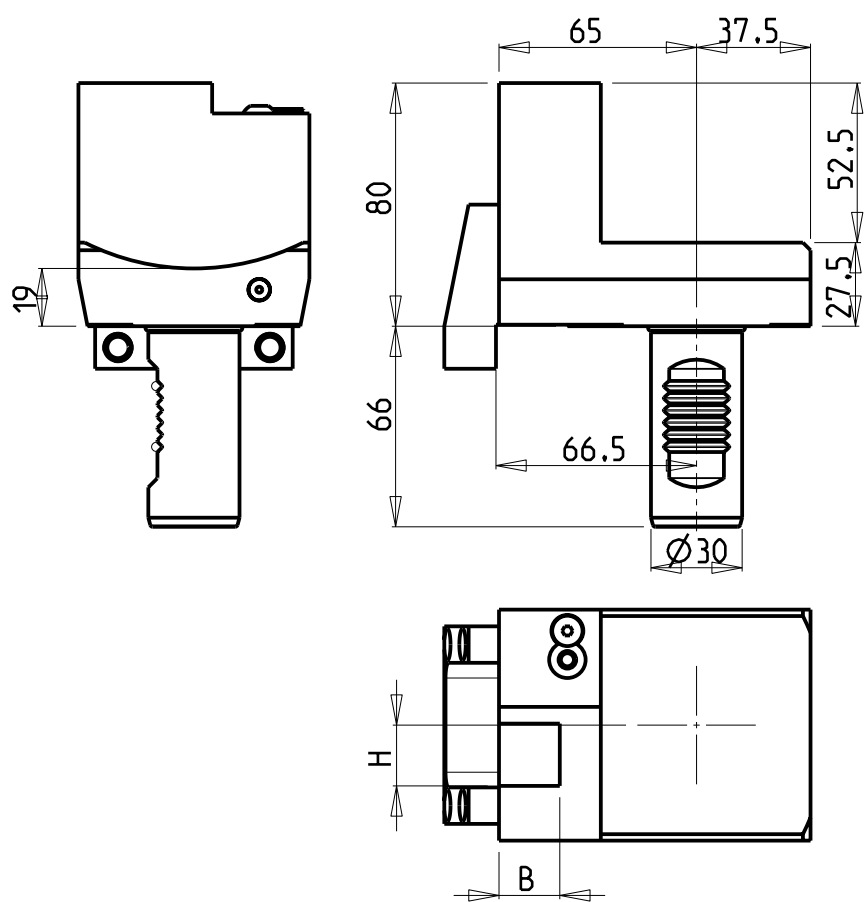
Via Casino Albini 480
Tel. 0541/956034-957884
Fax 0541/956341

47842 S. GIOVANNI IN M. (RN)
e-mail: mtma@mtmarchetti.com
http://www.mtmarchetti.com

PRODUZIONE MODULI ROTANTI



PAGINA MZT450-1-00



Cod. MT	Cod. MORI-SEIKI	N°Utensili N°Tools N°Werkzeuge	Misure Dimensions Masse	B	H
M0190120		1	mm	20	20
M0190119		1	Inch	3/4"	3/4"

DMG-MORI
MOD: ZT1000/1500 12/16 STAZIONI

PORTAUTENSILI RADIALE SINGOLO PER CONTROMANDRINO QD=20mm / QD=3/4"
Radial single static tool sub spindle side QD=20mm / QD=3/4"
Radial Single-werkzeughalter fuer Gegenspindel QD=20mm / QD=3/4"

Subject to change without notice.

M.T. srl

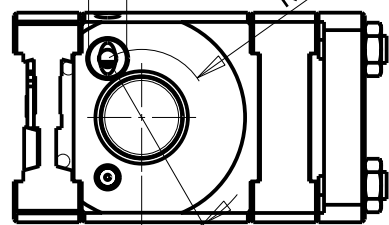
Via Casino Albini 480
Tel. 0541/956034-957884
Fax 0541/956341
47842 S. GIOVANNI IN M. (RN)
e-mail: mtma@mtmarchetti.com
http://www.mtmarchetti.com

PRODUZIONE MODULI ROTANTI

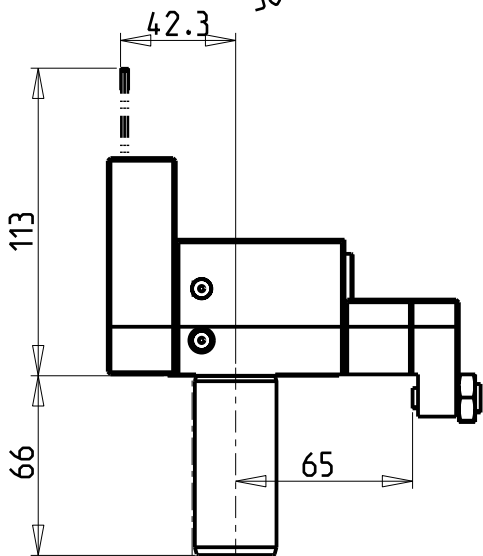


PAGINA MZT480-1-00

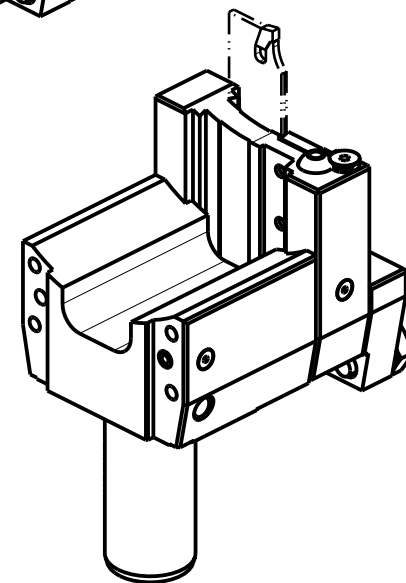
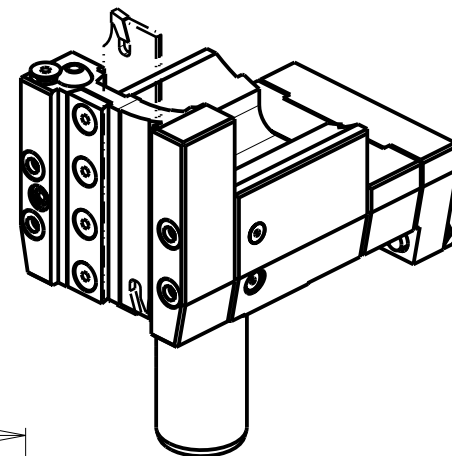
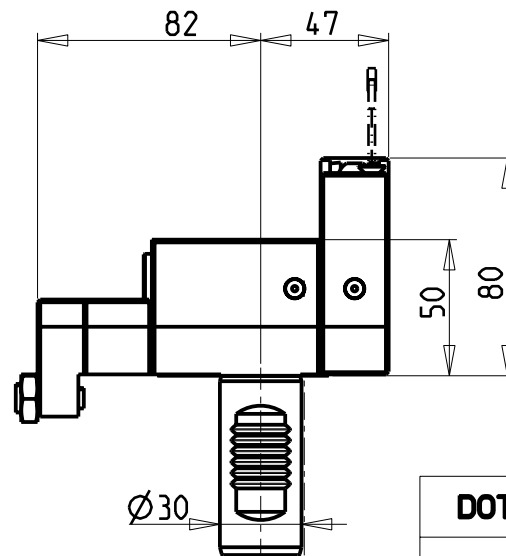
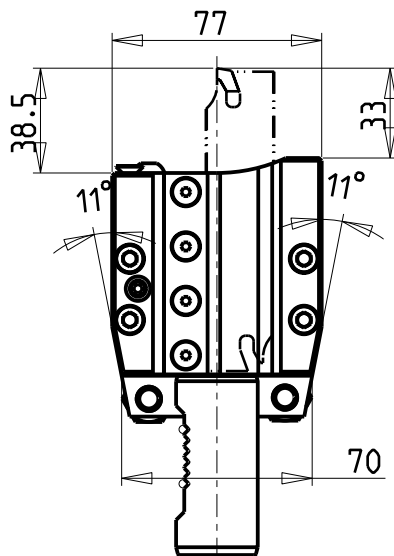
Ø14^{+0.15}_{-0.10}
Utile 9



30°



POSSIBILITA' DI LAVORO M3/M4
OPTION OF M3/M4 WORKING
ARBEITSMOGLICHKEIT M3/M4



DOTAZIONI - SUPPLIED WITH - AUSSTATTUNG

- N°1 - LAMA - BLADE - KLINGE KENNAMETAL H=26 Sp. 3/4mm
- N°10 - INSERTI - INSERTS - EINLAGEN
- N°1 - CHIAVE A T PER MONTAGGIO INSERTI
- T-WRENCH FOR INSERT SET UP
- T-SCHLUESSEL FUER EINSATZSTUECK-MONTAGE

Cod. MT	N°Utensili N°Tools N°Werkzeuge
---------	--------------------------------------

MZT0030126	1
------------	---

DMG-MORI
MOD: ZT1000/1500 12/16 STAZIONI

PORTAUTENSILE PER LAMA DOPPIO
Radial double blade holder
Radial Doppel-Abstechhalter

Subject to change without notice.

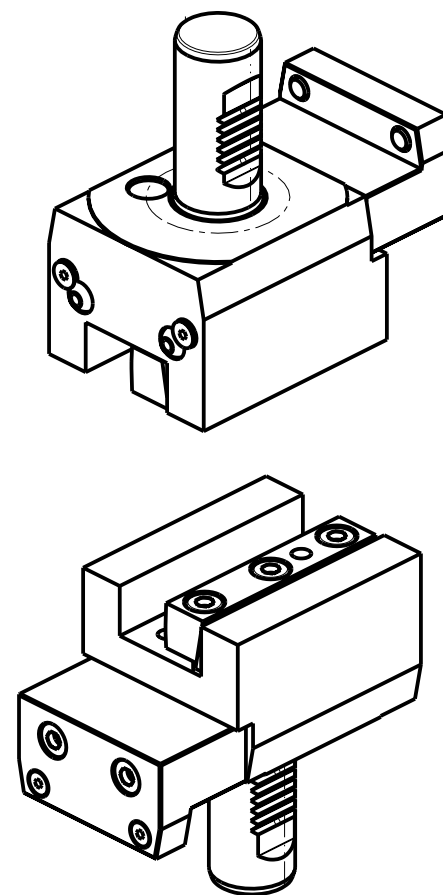
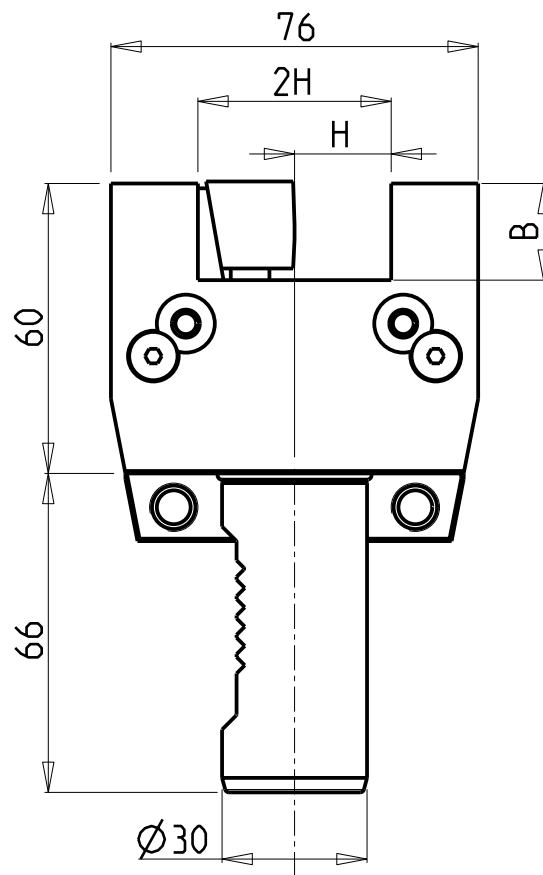
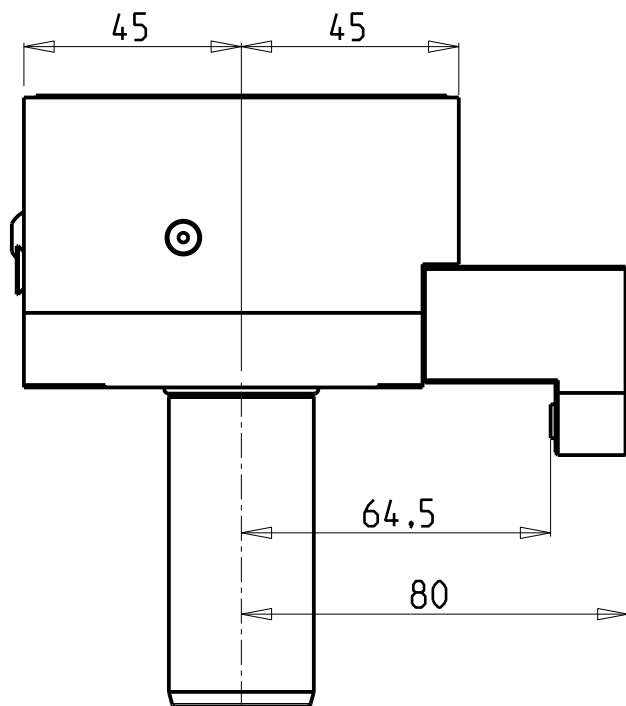
M.T. srl

Via Casino Albini 480
Tel. 0541/956034-957884
Fax 0541/956341
47842 S. GIOVANNI IN M. (RN)
e-mail: mtma@mtmarchetti.com
http://www.mtmarchetti.com

PRODUZIONE MODULI ROTANTI



PAGINA MZT520-1-10



Cod. MT	Cod. MORI-SEIKI	N°Utensili N°Tools N°Werkzeuge	Misure Dimensions Masse	B	H
M0202000	T03113	1	mm	20	20
M0201905	-	1	Inch	3/4"	3/4"

DMG-MORI
MOD: ZT1000/1500 12/16 STAZIONI

PORTAUTENSILE ASSIALE SINGOLO QD=20mm / QD=3/4"
Axial single static tool QD=20mm / QD=3/4"
Axial Single-Werkzeughalter QD=20mm / QD=3/4"

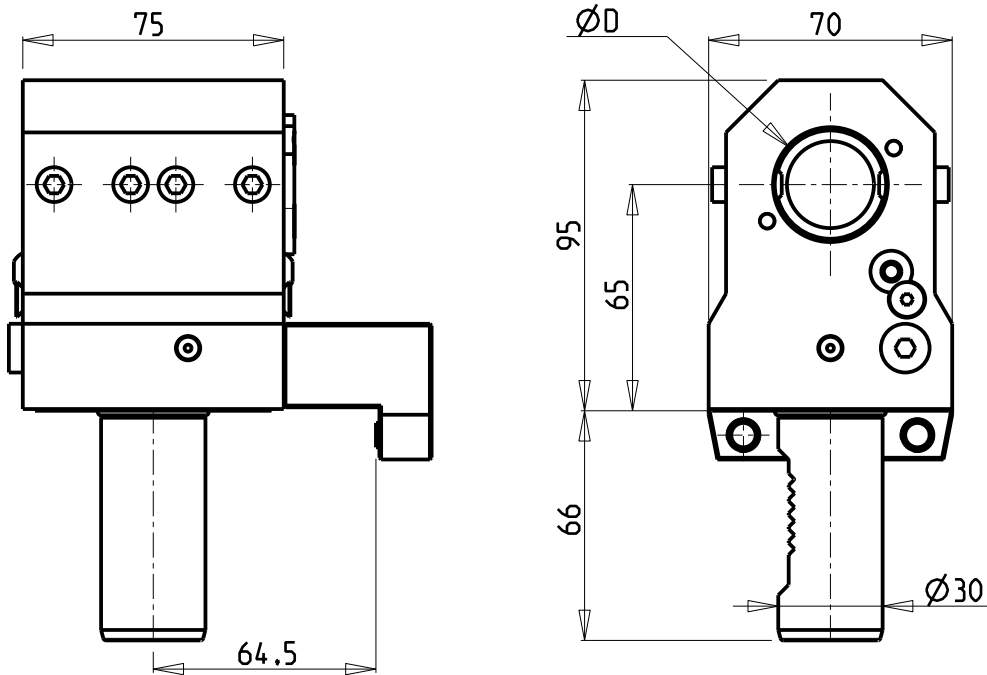
Subject to change without notice.

M.T. srl
Via Casino Albini 480
Tel. 0541/956034-957884
Fax 0541/956341
47842 S. GIOVANNI IN M. (RN)
e-mail: mtma@mtmarchetti.com
<http://www.mtmarchetti.com>

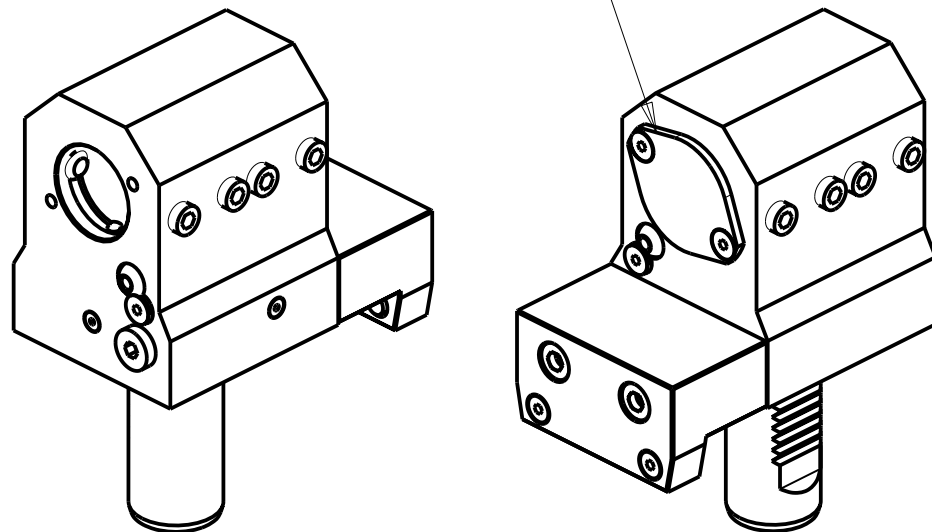
PRODUZIONE MODULI ROTANTI



PAGINA MZT550-1-00



KIT ADDUZIONE INTERNA (OPZIONALE)
 KIT FOR INTERNAL COOLANT (OPTIONAL)
 KIT FUER INTERNE KUEHLMITTELZUFUHR (OPTIONAL)
 Ø32 / Ø1 1/4" cod. KIT1000001
 Ø40 cod. KIT1000003



PER BOCCOLE DI RIDUZIONE VEDI PAG. TBL150-1-00
 FOR REDUCING BUSHINGS SEE PAGE TBL150-1-00
 FÜR REDUZIERBUCHSE SIEHE SEITE TBL150-1-00

Cod. MT	Cod. MORI-SEIKI	N°Utensili N°Tools N°Werkzeuge	Lubrificazione int. opzionale Coolant through optional Innenkuehlung Optional	Lubrificazione est. Ext. coolant Aussenkuehlung	Misure Dimensions Masse	D
M0163200	T15003	1	X	X	mm	32
M0163175	-	1	X	X	Inch	1 1/4"
M0164000	-	1	X	X	mm	40

DMG-MORI
 MOD: ZT1000/1500 12/16 STAZIONI

PORTAUTENSILE ASSIALE PER BARENO Ø32mm / Ø1 1/4" / Ø40mm H=65mm
 Axial single boring bar holder Ø32mm / Ø1 1/4" / Ø40mm H=65mm
 Axial Bohrhalter Ø32mm / Ø1 1/4" / Ø40mm H=65mm

Subject to change without notice.

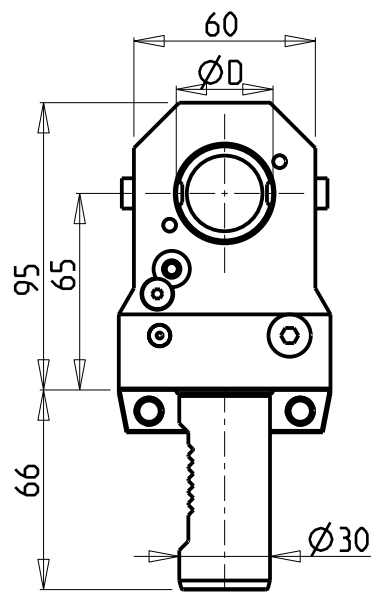
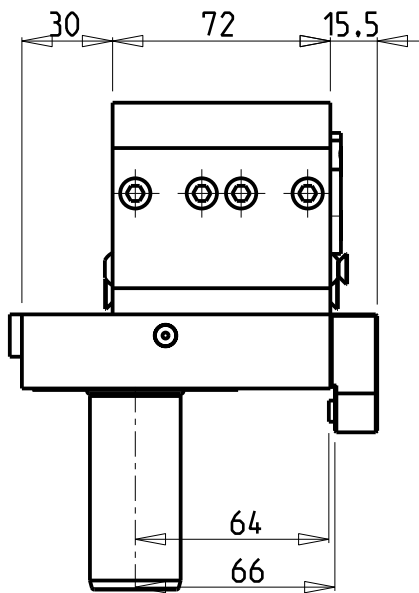
M.T. srl

Via Casino Albini 480
 Tel. 0541/956034-957884
 Fax 0541/956341
 47842 S. GIOVANNI IN M. (RN)
 e-mail: mtma@tmarchetti.com
 http://www.tmmarchetti.com

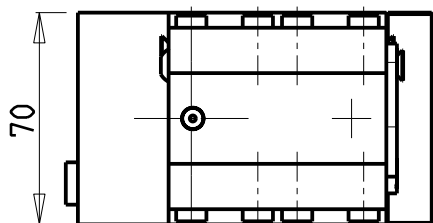
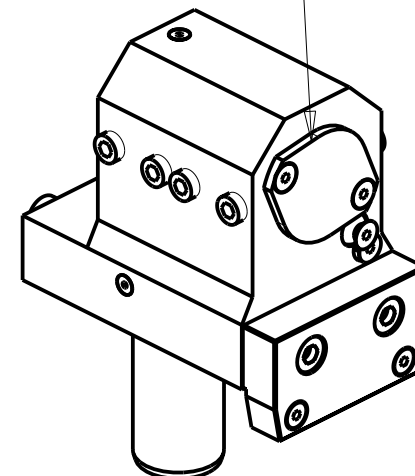
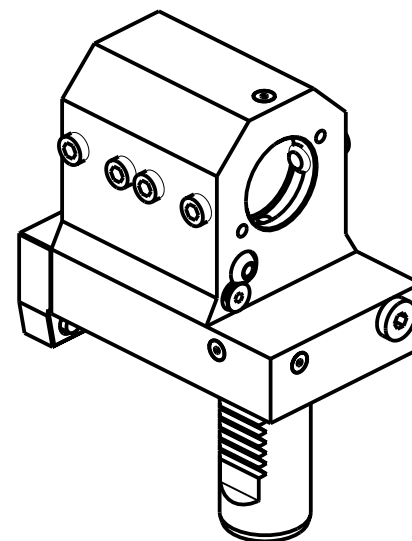
PRODUZIONE MODULI ROTANTI



PAGINA MZT650-1-10



KIT ADDUZIONE INTERNA (OPZIONALE)
 KIT FOR INTERNAL COOLANT (OPTIONAL)
 KIT FUER INTERNE KUEHLMITTELZUFUHR (OPTIONAL)
 Ø32 / Ø1 1/4" cod. KIT1000001



PER BOCCOLE DI RIDUZIONE VEDI PAG. TBL150-1-00
 FOR REDUCING BUSHINGS SEE PAGE TBL150-1-00
 FÜR REDUZIERBUCHSE SIEHE SEITE TBL150-1-00

Cod. MT	Cod. MORI SEIKI	N°Utensili N°Tools N°Werkzeuge	Lubrificazione int. opzionale Coolant through optional Innenkuehlung Optional	Lubrificazione est. Ext. coolant Aussenkuehlung	Misure Dimensions Masse	D
MZT0023200	-	1	X	X	mm	32
MZT0023175	-	1	X	X	Inch	1 1/4"

DMG-MORI
 MOD: ZT1000/1500 12/16 STAZIONI

PORTABARENO ARRETR. LATO MANDRINO. PROLUNGATO LATO CONTROMAND. Ø32mm / Ø1 1/4" H=65mm
 Rear-set boring bar holder on main spindle side, extended on subspindle side
 Bohrhälter zurueckversezt auf Hauptspindel-seite, verlaengert auf Gegenspindel-seite

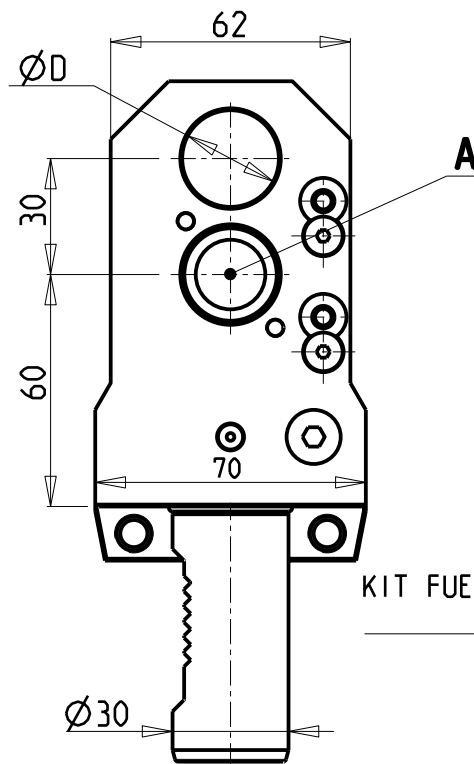
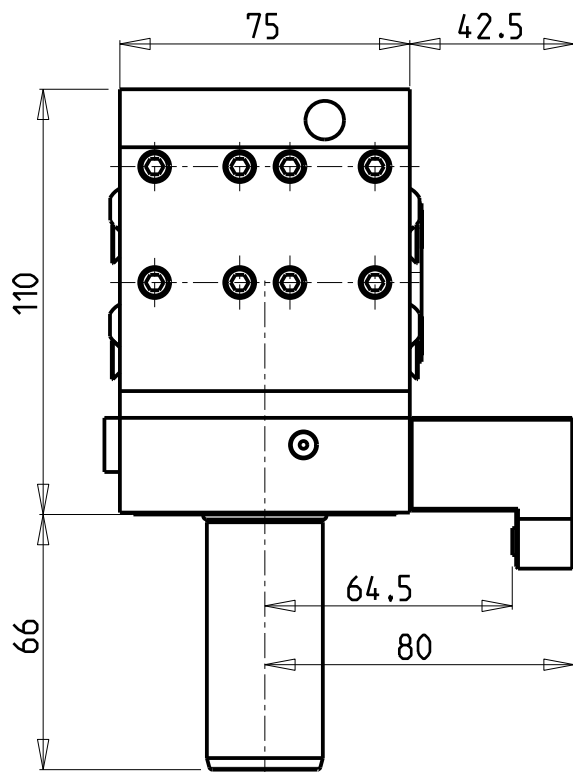
Subject to change without notice.

M.T. srl
 Via Casino Albini 480
 Tel. 0541/956034-957884
 Fax 0541/956341
 47842 S. GIOVANNI IN M. (RN)
 e-mail: mtma@mtmarchetti.com
 http://www.mtmarchetti.com

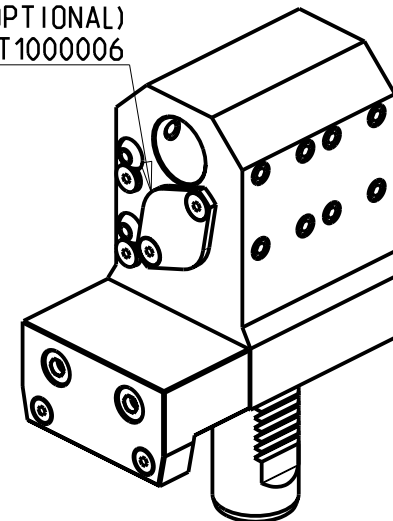
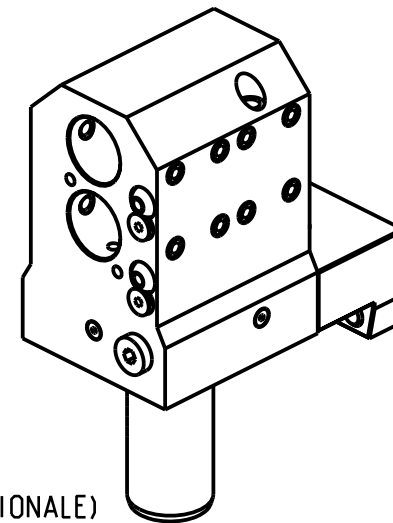
PRODUZIONE MODULI ROTANTI



PAGINA MZT850-1-00



KIT ADDUZIONE INTERNA (OPZIONALE)
 KIT FOR INTERNAL COOLANT (OPTIONAL)
 KIT FUER INTERNE KUEHLMITTELZUFUHR (OPTIONAL)
 cod. KIT1000006



PER BOCCOLE DI RIDUZIONE VEDI PAG. TBL150-1-00
 FOR REDUCING BUSHINGS SEE PAGE TBL150-1-00
 FÜR REDUZIERBUCHSE SIEHE SEITE TBL150-1-00

Cod. MT	Cod. MORI-SEIKI	N°Utensili N°Tools N°Werkzeuge	A Lubrificazione int. solo foro A Coolant through hole A only Innenkuehlung nur loch A	Lubrificazione est. opzionale Ext. coolant optional Aussenkuehlung Optional	Misure Dimensions Masse	D
M0212500	-	2	X	X	mm	25
M0212540	-	2	X	X	Inch	1"

DMG-MORI
 MOD: ZT1000/1500 12/16 STAZIONI

PORTAUTENSILE ASSIALE PER BARENO 2 POSIZIONI Ø25mm / Ø1"
 Axial double boring bar holder Ø25mm / Ø1"
 Axial Bohrhälter 2 Positionen Ø25mm / Ø1"

Subject to change without notice.

M.T. srl

Via Casino Albini 480
 Tel. 0541/956034-957884
 Fax 0541/956341
 47842 S. GIOVANNI IN M. (RN)
 e-mail: mtma@mtmarchetti.com
 http://www.mtmarchetti.com

PRODUZIONE MODULI ROTANTI



PAGINA MZT864-1-00