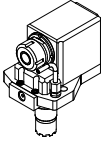
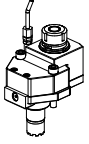
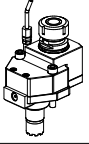
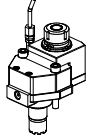
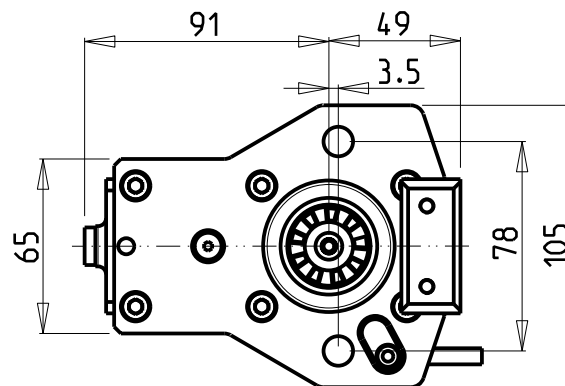
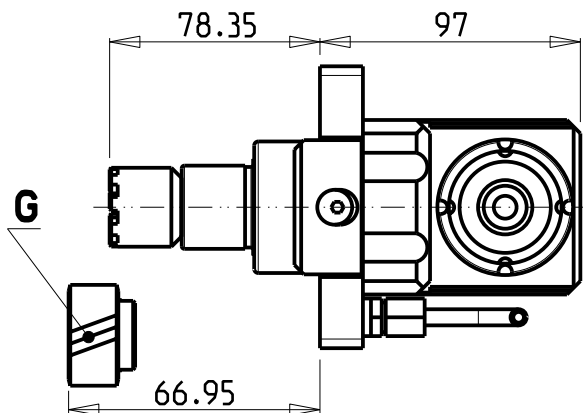
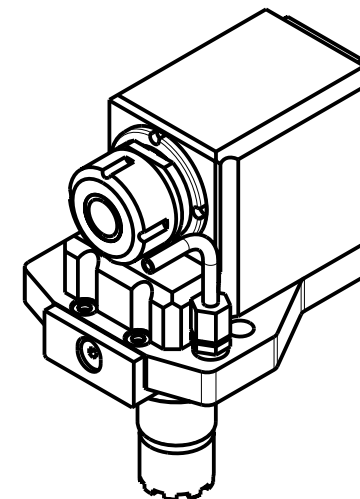


		PAGINA Page Seite
<p>MODULO MOTORIZZATO RADIALE Radial driven tool Radial angetriebenes Werkzeug</p>		BID010.1.00
<p>MODULO MOTORIZZATO ASSIALE Axial driven tool Axial angetriebenes Werkzeug</p>		BID150.1.10
<p>MODULO MOTORIZZATO ASSIALE RIDOTTO 1=2:1 Axial geared-down 1=2:1 driven tool Axial angetriebenes Werkzeug untersetzt 1=2:1</p>		BID190.1.10
<p>MODULO MOTORIZZATO ASSIALE MOLTIPLICATO 1=1:2 Axial geared-up 1=1:2 driven tool Axial angetriebenes Werkzeug uebersetzt 1=1:2</p>		BID200.1.10



TORRETTA IDRAULICA
Hydraulic turret
Hydraulik Revolver

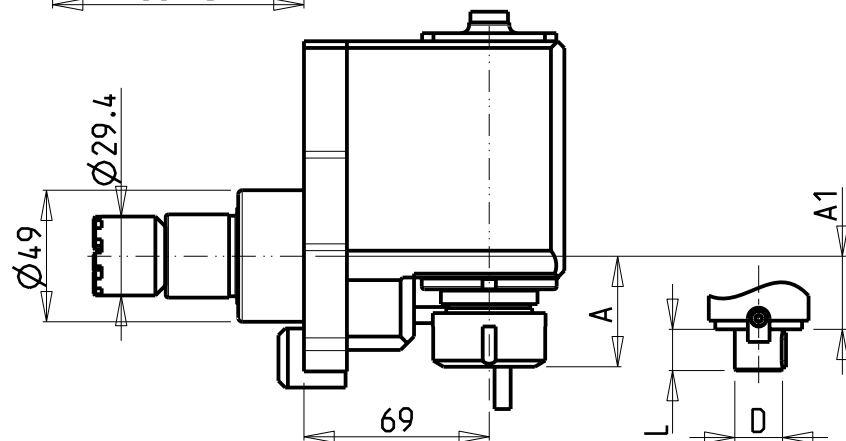


PER ORDINARE CON INGRANAGGIO
AGGIUNGERE "G" AL CODICE IN TABELLA.
ESEMPIO: 0081225 DIVENTA 0081225G

TO ORDER WITH GEARS
ADD A "G" IN THE CODE-CHARTS.
EXAMPLE: 0081225 BECOMES 0081225G

UM MIT ZAHNRAD ZU BESTELLEN, MUSS MAN
DEM TABELLEN-CODE EIN "G" ANHÄNGEN.
BEISPIEL: 0081225 WIRD DANN 0081225G

- Chiave inclusa
- Key included
- Schluessel inbegriffen



Cod. MT	Cod. BIGLIA	Mandrino Spindle Spindel	I	RPM	Coppia Max Max Torque Max Drehmoment	Lubr.esterna Ext. coolant Aussenkuehlung	Presa di moto frontale Front-type drive Frontzapfwelle-Anschluss	Presa di moto con ingranaggio Gear-type drive Getriebezapfwelle-Anschluss	A	A1	D	L	CHIAVI NON INCLUDE Keys not included Schluessel nicht einbegriffen	
													CHSTER25	CHUB36
0081225	T134-00004	ER25	1:1	3500	40Nm	X	X	X	41.26	-	-	-	CHSTER25	CHUB36
0081132	T134-00041	ER32	1:1	3500	40Nm	X	X	X	54.96	-	-	-	CHSTER32	CHUB36
0081617	-	Ø16x17	1:1	3500	40Nm	X	X	X	-	22.90	16	17	CH_VTCROCE_M08	CHUB36

BIGLIA (torretta idraulica - Hydraulic turret - Hydraulik Revolver)

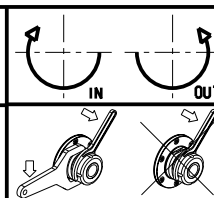
MOD: B500 B501 B1000 B56

MODULO MOTORIZZATO RADIALE

Radial driven tool

Radial angetriebenes Werkzeug

Subject to change without notice.



M.T. srl

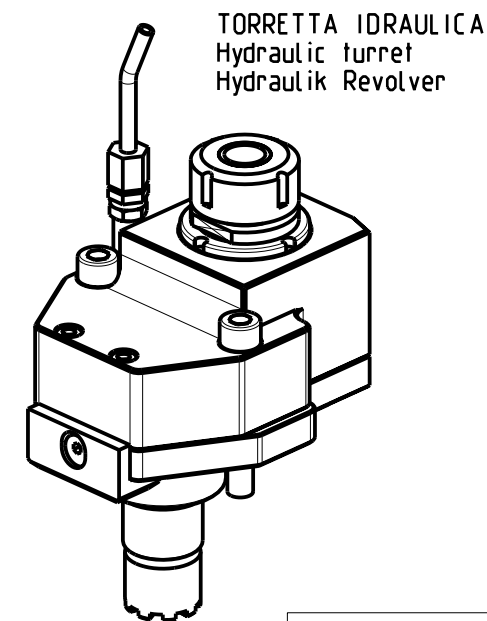
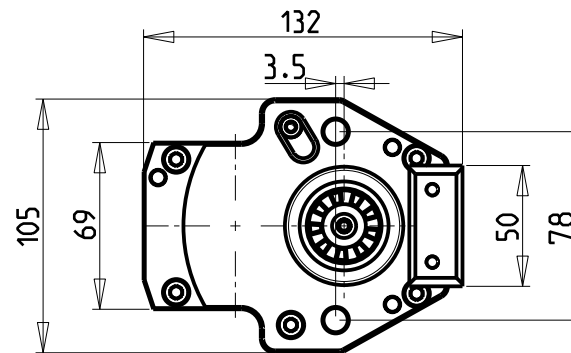
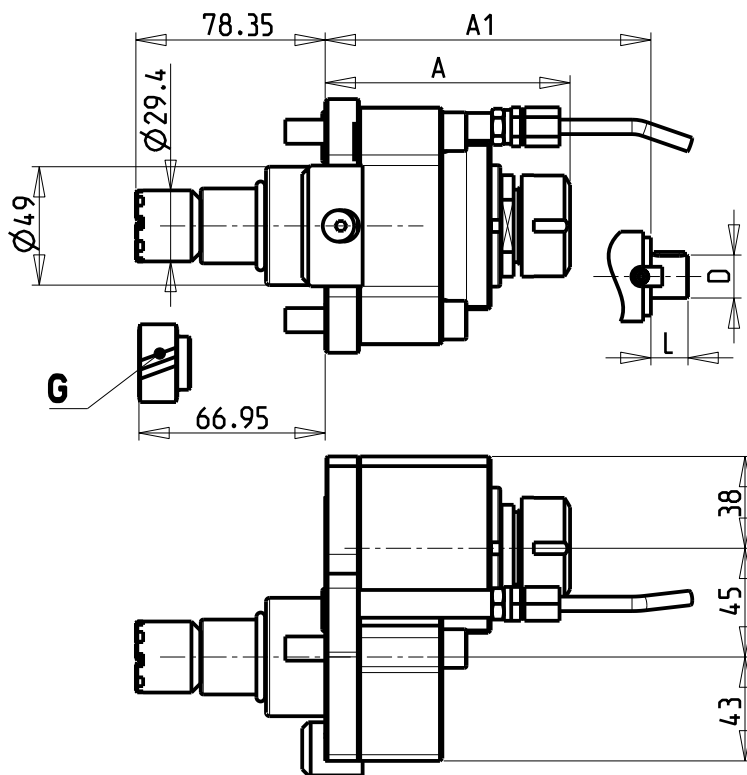
Via Casio Albini 480
Tel. 0541/956034-957884
Fax 0541/956341

47842 S. GIOVANNI IN M. (RN)
e-mail: mtma@mtmarchetti.com
http://www.mtmarchetti.com

PRODUZIONE MODULI ROTANTI



PAGINA BID010-1-00



PER ORDINARE CON INGRANAGGIO
AGGIUNGERE "G" AL CODICE IN TABELLA.
ESEMPIO: 0090425 DIVENTA 0092425G

TO ORDER WITH GEARS
ADD A "G" IN THE CODE-CHARTS.
EXAMPLE: 0092425 BECOMES 0092425G

UM MIT ZAHNRAD ZU BESTELLEN, MUSS MAN
DEM TABELLEN-CODE EIN "G" ANHÄNGEN.
BEISPIEL: 0092425 WIRD DANN 0092425G

- Chiave inclusa
- Key included
- Schlüssel inbegriffen

Cod. MT	Cod. BIGLIA	Mandrino Spindle Spindel	I	RPM	Coppia Max Max Torque Max Drehmoment	Lubr.esterna Ext. coolant Aussenkühlung	Preso di moto frontale Front-type drive Frontzapfwelle-Anschluss	Preso di moto con ingranaggio Gear-type drive Getriebezapfwelle-Anschluss	A	A1	D	L	CHIAVI NON INCLUSE Keys not included Schlüssel nicht einbegriffen	
0090425	T134-00005	ER25	1:1	3500	40Nm	X	X	X	101.36	-	-	-	CHSTER25	CHUB36
0090332	T134-00039	ER32	1:1	3500	40Nm	X	X	X	115	-	-	-	CHSTER32	CHUB36
0091617	-	Ø16x17	1:1	3500	40Nm	X	X	X	-	83	16	17	CH_VTCROCE_M08	CHUB36
0092219	-	Ø22x19	1:1	3500	40Nm	X	X	X	-	85	22	19	CH_VTCROCE_M10	CHUB36
0092721	41.32.152.00	Ø27x21	1:1	3500	40Nm	X	X	X	-	87	27	21	CH_VTCROCE_M12	CHUB36

BIGLIA (torretta idraulica - Hydraulic turret - Hydraulik Revolver)

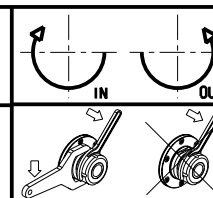
MOD: B500 B501 B1000 B56

MODULO MOTORIZZATO ASSIALE

Axial driven tool

Axial angetriebenes Werkzeug

Subject to change without notice.



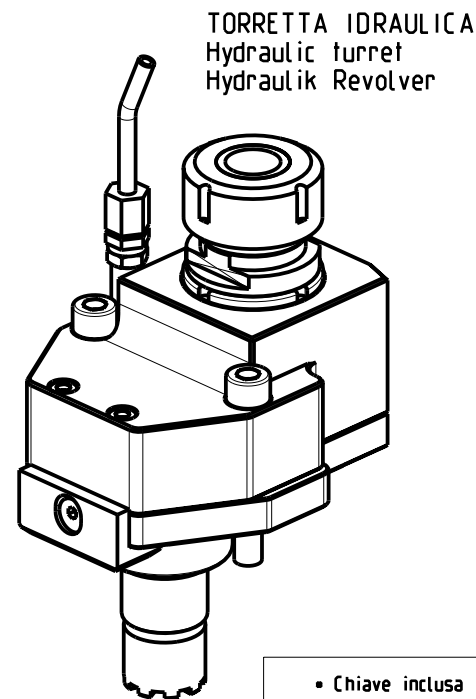
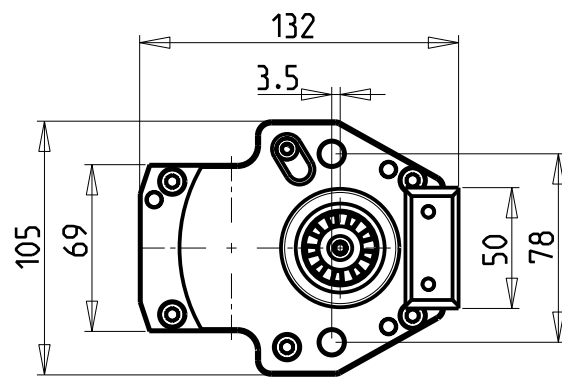
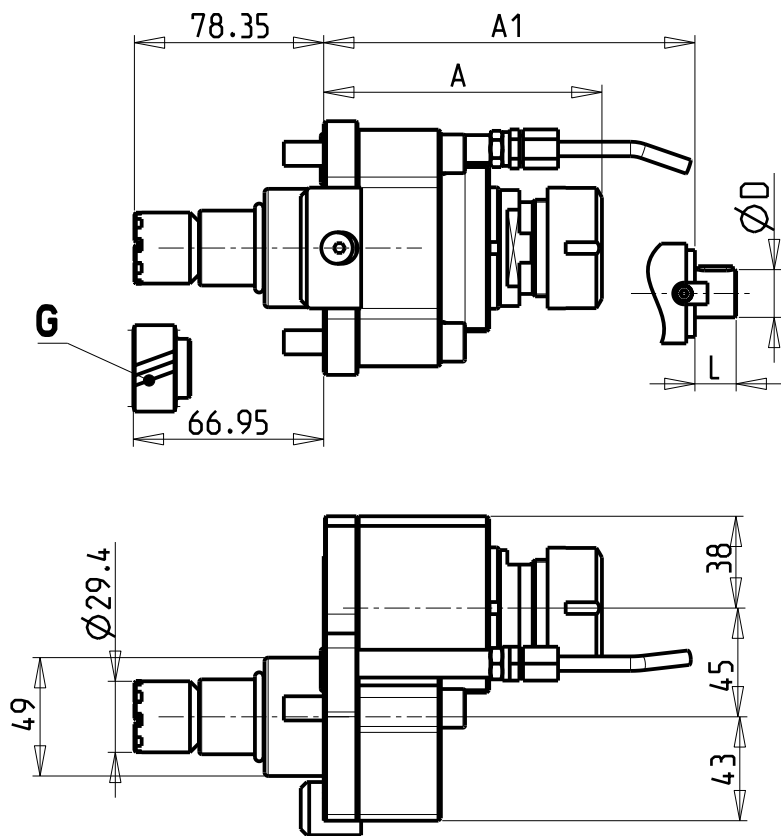
M.T. srl

Via Casino Albini 480
Tel. 0541/956034-957884
Fax 0541/956341
47842 S. GIOVANNI IN M. (RN)
e-mail: mtma@tmarchetti.com
http://www.tmmarchetti.com

PRODUZIONE MODULI ROTANTI



PAGINA BID150-1-10



PER ORDINARE CON INGRANAGGIO
AGGIUNGERE "G" AL CODICE IN TABELLA.
ESEMPIO: 0160025 DIVENTA 0160025G

TO ORDER WITH GEARS
ADD A "G" IN THE CODE-CHARTS.
EXAMPLE: 0160025 BECOMES 0160025G

UM MIT ZAHNRAD ZU BESTELLEN, MUSS MAN
DEM TABELLEN-CODE EIN "G" ANHANGEN.
BEISPIEL: 0160025 WIRD DANN 0160025G

- Chiave inclusa
- Key included
- Schluessel inbegriffen

Cod. MT	Mandrino Spindle Spindel	I	RPM	Coppia Max Max Torque Max Drehmoment	Lubr.esterna Ext. coolant Aussenkuehlung	Preso di moto frontale Front-type drive Frontzapfwelle-Anschluss	Preso di moto con ingranaggio Gear-type drive Getriebezapfwelle-Anschluss	A	A1	D	L	CHIAVI NON INCLUSE Keys not included Schluessel nicht einbegriffen	
0160025	ER25	2:1	1750	60Nm	X	X	X	101.36	-	-	-	CHSTER25	CHUB36
0160032	ER32	2:1	1750	60Nm	X	X	X	115	-	-	-	CHSTER32	CHUB36
0161617	Ø16x17	2:1	1750	60Nm	X	X	X	-	83	16	17	CH_VTCROCE_M08	CHUB36
0162219	Ø22x19	2:1	1750	60Nm	X	X	X	-	85	22	19	CH_VTCROCE_M10	CHUB36
0162721	Ø27x21	2:1	1750	60Nm	X	X	X	-	87	27	21	CH_VTCROCE_M12	CHUB36

BIGLIA (torretta idraulica - Hydraulic turret - Hydraulik Revolver)

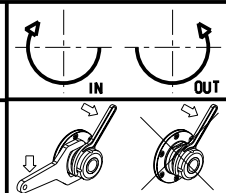
MOD: B500 B501 B1000 B56

MODULO MOTORIZZATO ASSIALE RIDOTTO I=2:1

Axial geared-down I=2:1 driven tool

Axial angetriebenes Werkzeug untersetzt I=2:1

Subject to change without notice.

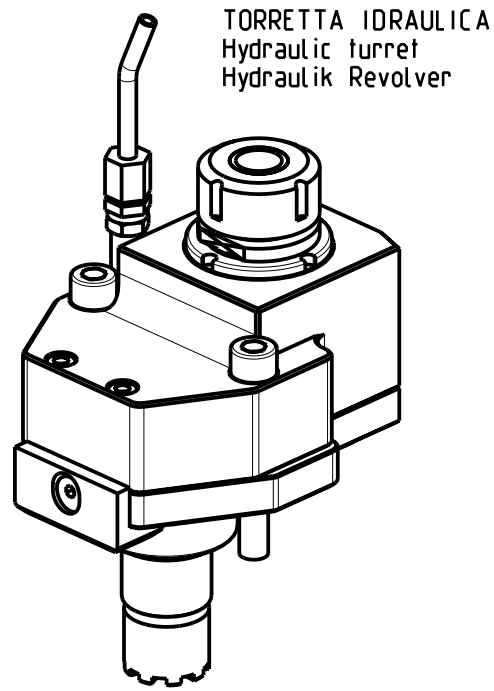
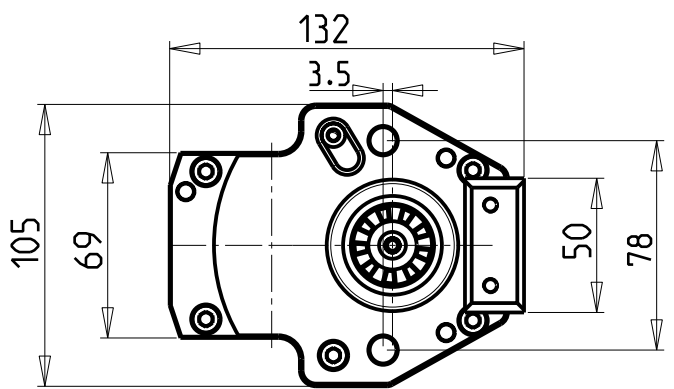
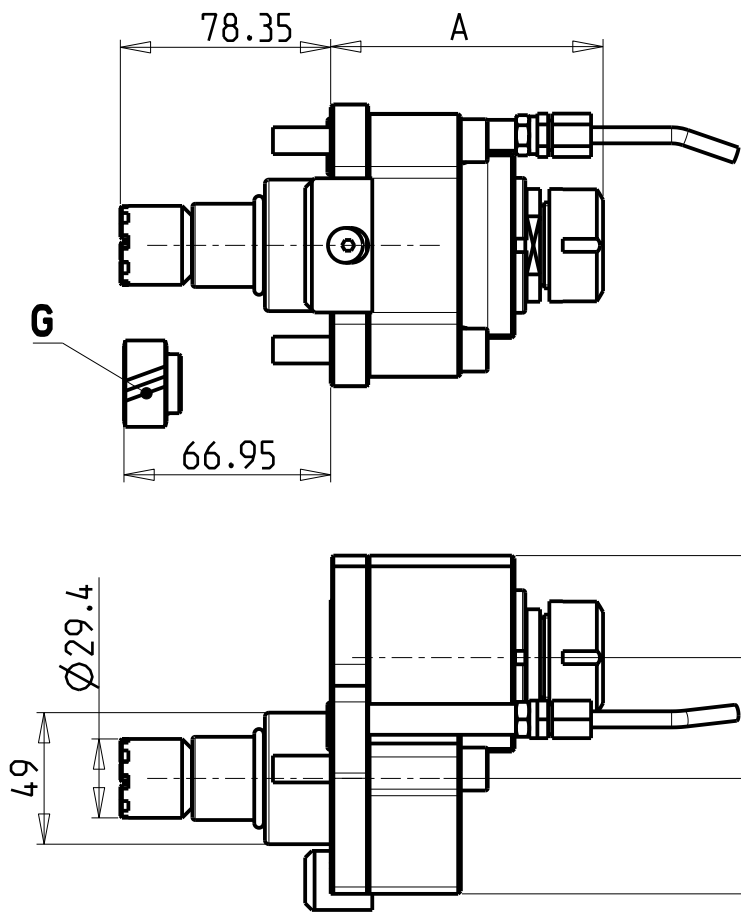


M.T. srl
Via Casino Albini 480
Tel. 0541/956034-957884
Fax 0541/956341
47842 S. GIOVANNI IN M. (RN)
e-mail: mtma@mtmarchetti.com
http://www.mtmarchetti.com

PRODUZIONE MODULI ROTANTI



PAGINA BID190-1-10



PER ORDINARE CON INGRANAGGIO
AGGIUNGERE "G" AL CODICE IN TABELLA.
ESEMPIO: 0120025 DIVENTA 0120025G

TO ORDER WITH GEARS
ADD A "G" IN THE CODE-CHARTS.
EXAMPLE: 0120025 BECOMES 0120025G

UM MIT ZAHNRAD ZU BESTELLEN, MUSS MAN
DEM TABELLEN-CODE EIN "G" ANHANGEN.
BEISPIEL: 0120025 WIRD DANN 0120025G

Cod. MT	Mandrino Spindle Spindel	I	RPM	Coppia Max Max Torque Max Drehmoment	Lubrificazione est. Ext. coolant Aussekkuehlung	Presenza di moto frontale Front-type drive Frontzapfwelle-Anschluss	Presenza di moto con ingranaggio Gear-type drive Getriebezapfwelle-Anschluss	A	CHIAVI NON INCLUSE Keys not included Schlüssel nicht einbegriffen	
0120025	ER25	1:2	7000	30Nm	X	X	X	103.16	CHSTER25	CHUB36
0120032	ER32	1:2	7000	30Nm	X	X	X	115.66	CHSTER32	CHUB36

BIGLIA (torretta idraulica - Hydraulic turret - Hydraulik Revolver)

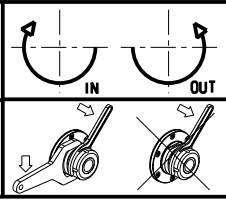
MOD: B500 B501 B1000 B56

MODULO MOTORIZZATO ASSIALE MOLTIPLICATO I=1:2

Axial geared-up I=1:2 driven tool

Radial angetriebenes Werkzeug uebersetzt I=1:2

Subject to change without notice.



M.T. srl
Via Casino Albini 480
Tel. 0541/956034-957884
Fax 0541/956341
47842 S. GIOVANNI IN M. (RN)
e-mail: mtma@mtmarchetti.com
http://www.mtmarchetti.com

PRODUZIONE MODULI ROTANTI



PAGINA BID200-1-10