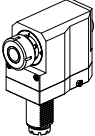
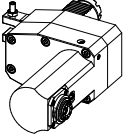
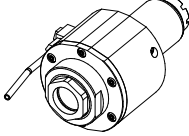
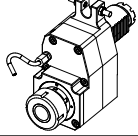
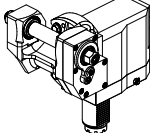
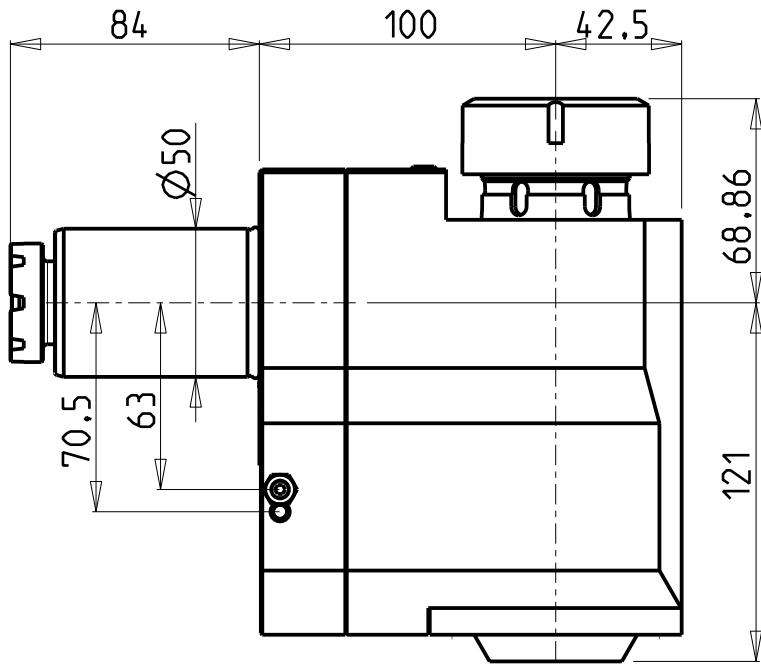
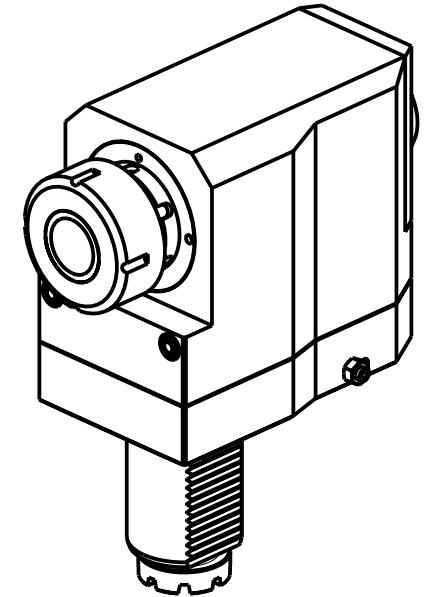
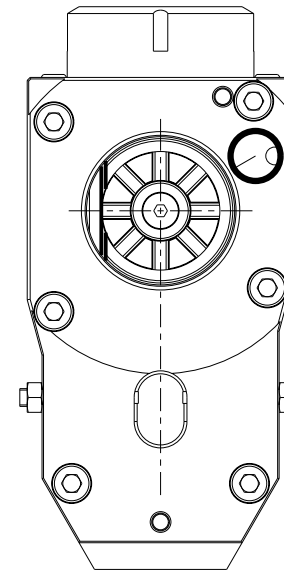
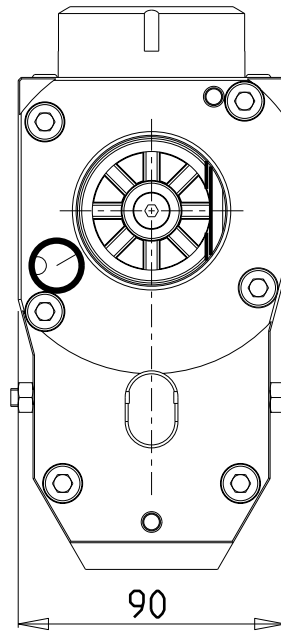


		PAGINA Page Seite
<p>MODULO MOTORIZZATO RADIALE VDI50 Radial driven tool VDI50 Radial angetriebenes Werkzeug VDI50</p>		BAR012.3.10
<p>MODULO MOTORIZZATO RADIALE PER LAVORAZIONI INTERNE VDI50 Radial driven tool for internal tooling VDI50 Radial angetriebenes Werkzeug fuer interne verarbeitungen VDI50</p>		BAR125.3.00
<p>MODULO MOTORIZZATO ASSIALE VDI50 Axial driven tool VDI50 Axial angetriebenes Werkzeug VDI50</p>		BAR150.3.10
<p>MODULO MOTORIZZATO ASSIALE DISASSATO 60mm VDI50 Axial driven tool re-directed by 60mm VDI50 Axial angetriebenes Werkzeug achsversetzt um 60mm VDI50</p>		BAR160.3.00
<p>MODULO MOTORIZZATO PORTACREATORE VDI50 Driven gear hobber VDI50 Angetriebenes Zahnradwaelzfraes-Werkzeug VDI50</p>		BAR340.3.00



versione dx
right version
version rechts

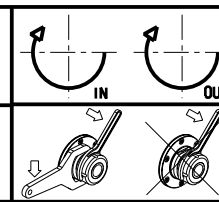
versione sx
left version
version links



Cod. MT	Mandrino Spindle Spindel	i	RPM	Coppia Max Max Torque Max Drehmoment	Lubrificazione est. Ext. coolant Aussenkuehlung	CHIAVI NON INCLUSE Keys not included Schluessel nicht einbegriffen		VDI
181BAR_R40_50C00	ER40	1:1	4000	100Nm	X	CHSTER40	CHSE5255	DESTRO - Right - Recht
181BAR_R40_50C20	ER40	1:1	4000	100Nm	X	CHSTER40	CHSE5255	SINISTRO - Left - Links

BARUFFALDI
VDI 50

MODULO MOTORIZZATO RADIALE VDI50
Radial driven tool VDI50
Radial angetriebenes Werkzeug VDI50



M.T. srl
Via Casino Albini 480
Tel. 0541/956034-957884
Fax 0541/956341
47842 S. GIOVANNI IN M. (RN)
e-mail: mtma@mtmarchetti.com
http://www.mtmarchetti.com

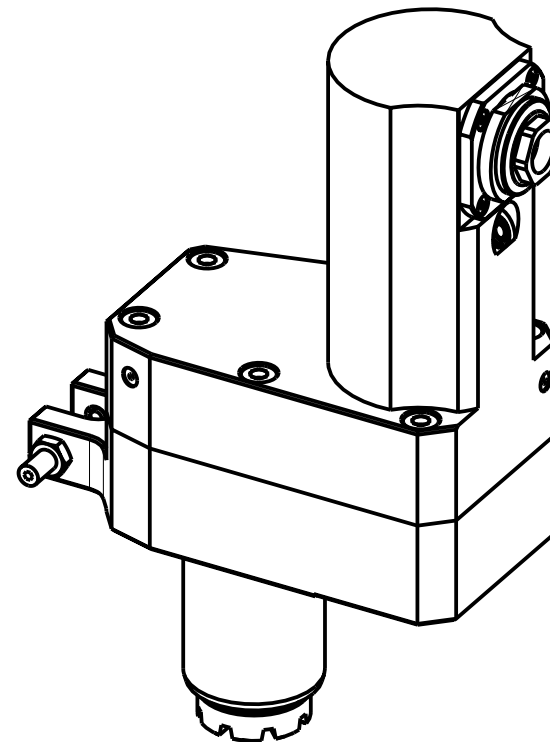
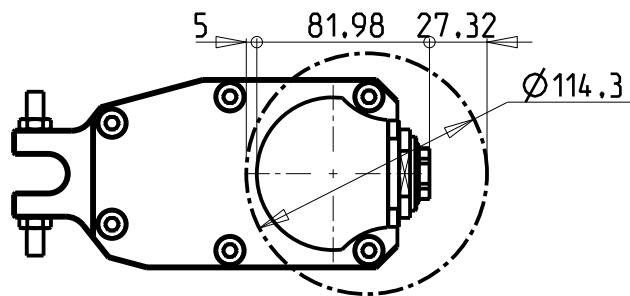
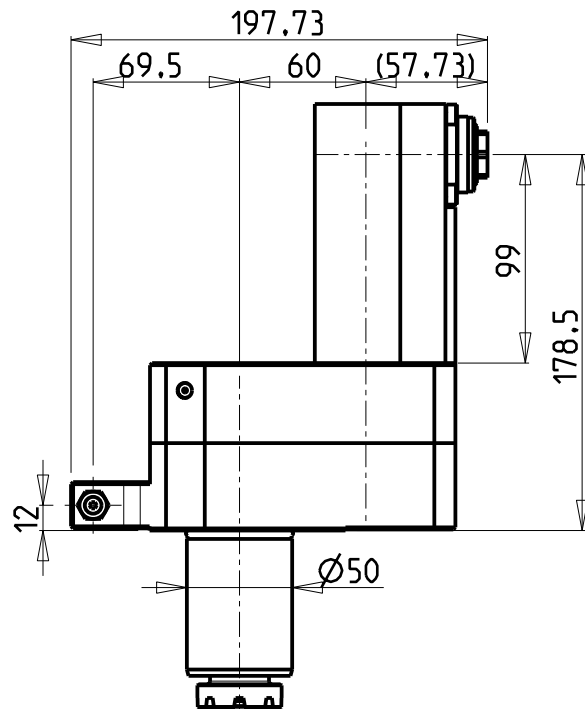
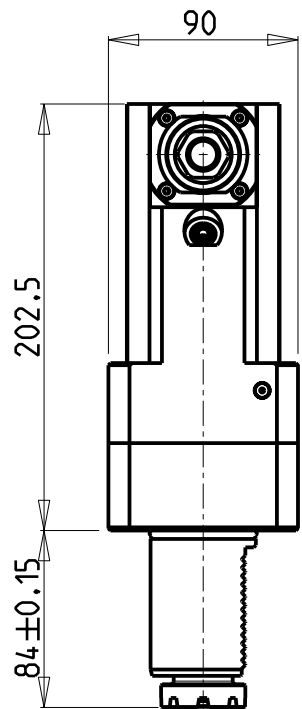
PRODUZIONE MODULI ROTANTI



PAGINA BAR012-3-10

Subject to change without notice.

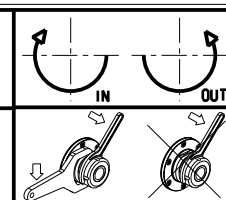
10/2018




Cod. MT	Mandrino Spindle Spindel	I	RPM MAX	Coppia Max Max Torque Max Drehmoment	Lubrificazione est. Ext. coolant Ausseinkuehlung	CHIAVI INCLUSE Keys included Schluessel inbegriffen		VDI
BAR0010120	ER A 20	1:1	4000	25Nm	X	CHUB22	CHUB36	DESTRO - Right - Recht

BARUFFALDI
VDI 50

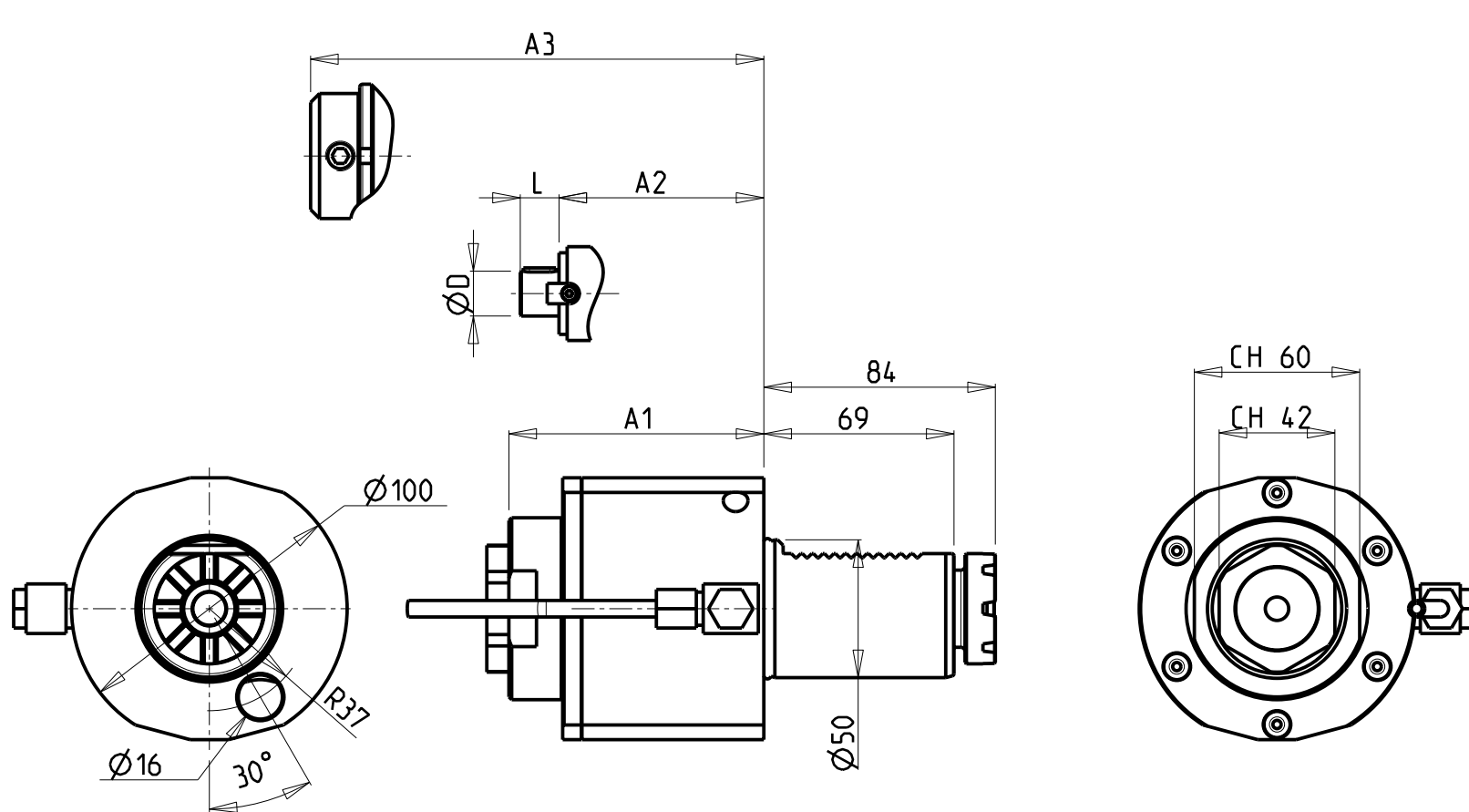
MODULO MOTORIZZATO RADIALE PER LAVORAZIONI INTERNE VDI50
Radial driven tool for internal tooling VDI50
Radial angetriebenes Werkzeug fuer interne verarbeitungen VDI50



M.T. srl
Via Casino Albini 480
Tel. 0541/956034-957884
Fax 0541/956341
47842 S. GIOVANNI IN M. (RN)
e-mail: mtma@mtmarchetti.com
http://www.mtmarchetti.com

PRODUZIONE MODULI ROTANTI

PAGINA BAR125-3-00

Subject to change without notice.

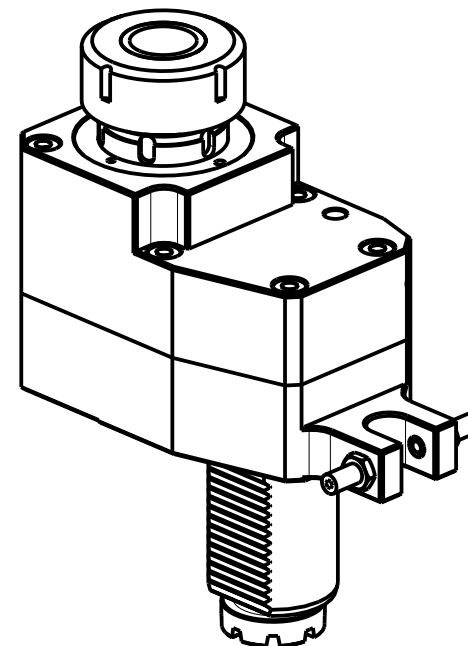
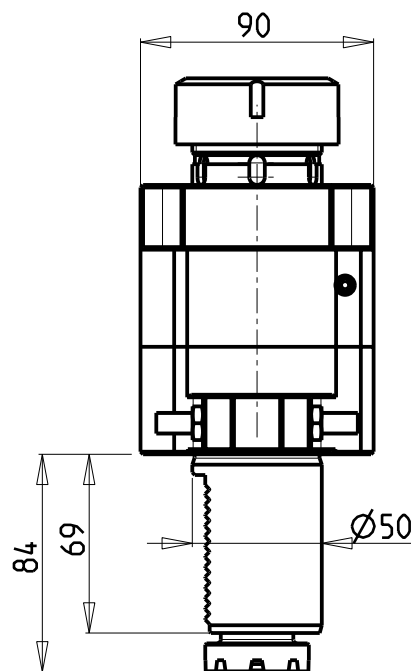
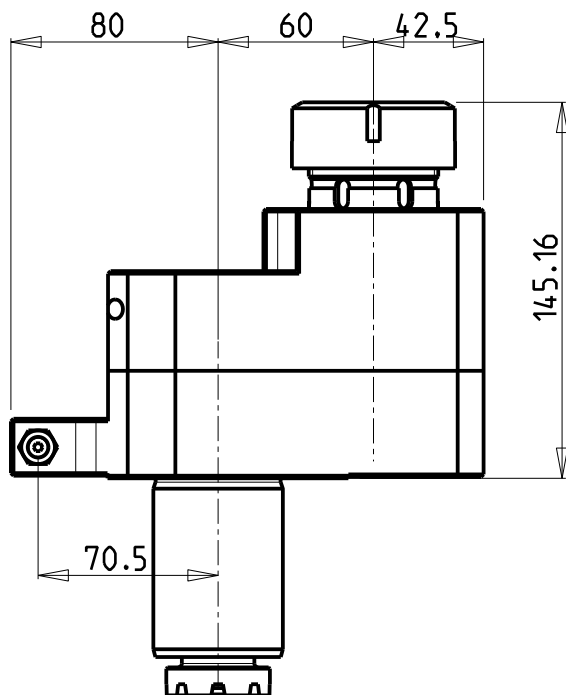
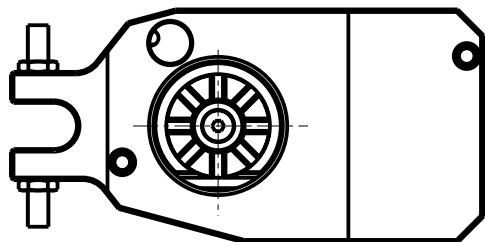


- Chiave inclusa
- Key included
- Schlüssel inbegriffen

Cod. MT	Mandrino Spindel Spindel	I	RPM	Coppia Max Max Torque Max Drehmoment	Lubrificazione int. Coolant through Innenkuehlung	Lubrificazione est. Ext. coolant Aussenkuehlung	A1	A2	A3	ØD	L	CHIAVI NON INCLUDE Keys not included Schlüssel nicht einbegriffen	
												CHUB42	CHUB60
BAR0020140	ERA40	1:1	4000	100Nm		X	92.5					CHUB42	CHUB60
BAR0020240	ERA40	1:1	4000	100Nm	P=30bar	X	92.5					CHUB42	CHUB60
BAR0020522	Ø22x19	1:1	4000	100Nm		X		88.5		22	19	CHUB60	CH_VTCROCE_M08
BAR0020725	WELDON25	1:1	4000	100Nm	P=30bar	X			116.5			-	-

BARUFFALDI VDI 50 MODULO MOTORIZZATO ASSIALE VDI50 Axial driven tool VDI50 Axial angetriebenes Werkzeug VDI50		M.T. srl Via Casino Albini 480 Tel. 0541/956034-957884 Fax 0541/956341 47842 S. GIOVANNI IN M. (RN) e-mail: mtma@mtmarchetti.com http://www.mtmarchetti.com	PRODUZIONE MODULI ROTANTI 	PAGINA BAR150-3-10
---	--	---	-------------------------------	--------------------

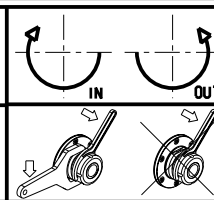
Subject to change without notice.



Cod. MT	Mandrino Spindle Spindel	I	RPM	Coppia Max Max Torque Max Drehmoment	Lubrificazione est. Ext. coolant Aussenkuehlung	CHIAVI NON INCLUSE Keys not included Schlüssel nicht einbegriffen	VDI
185BAR_A40_50C00	ER40	1:1	4000	100Nm	X	CHSTER40 CHSE5255	DESTRO - Right - Recht

BARUFFALDI
VDI 50

MODULO MOTORIZZATO ASSIALE DISASSATO 60mm VDI50
Axial driven tool re-directed by 60mm VDI50
Axial angetriebenes Werkzeug achsversetzt um 60mm VDI50



M.T. srl
Via Casino Albini 480
Tel. 0541/956034-957884
Fax 0541/956341
47842 S. GIOVANNI IN M. (RN)
e-mail: mtma@mtmarchetti.com
http://www.mtmarchetti.com

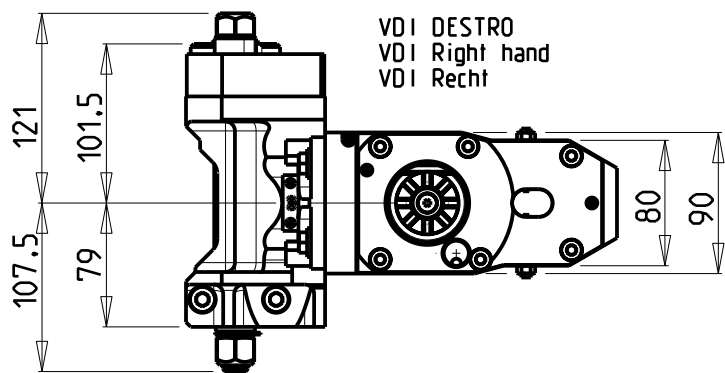
PRODUZIONE MODULI ROTANTI



PAGINA BAR160-3-00

Subject to change without notice.

10/2018

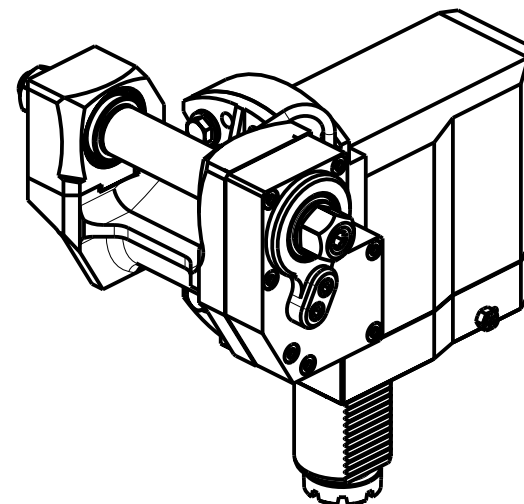
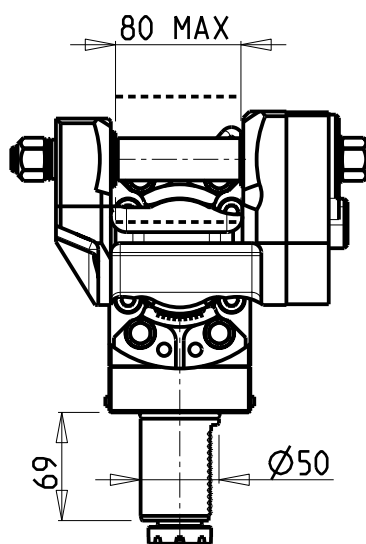
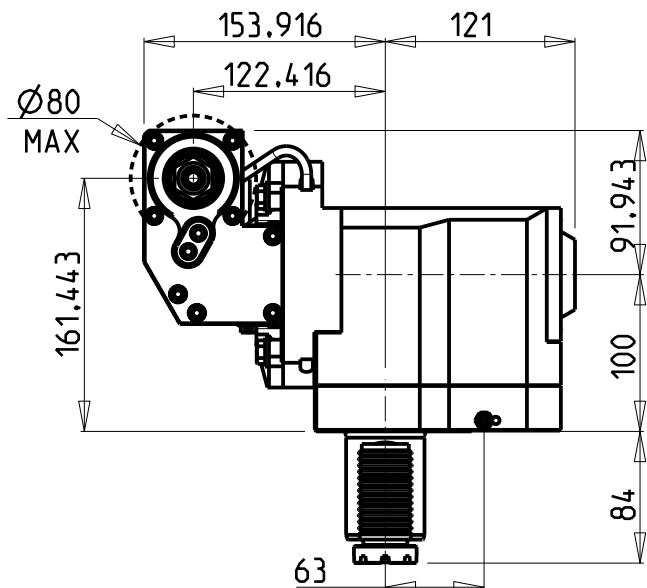


VDI DESTRO
VDI Right hand
VDI Recht

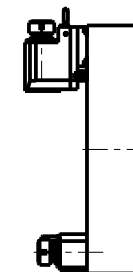
PER ALBERI E DISTANZIALI VEDI PAG. TBL250-1-00
FOR SHAFT END SPACER SEE PAGE TBL250-1-00
FUER DORN UND ABSTANDSSTUECK SEITE TBL250-1-00

DOTAZIONI - SUPPLIED WITH - AUSSTATTUNG

mm / inch	- N°1 ALBERO + DISTANZIALI - N°1 SHAFT + SPACER - N°1 DORN + ABSTANDSSTUECK
-----------	---



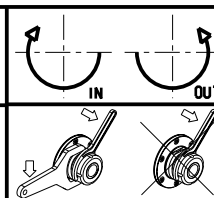
**TORRETTE ASSIALI
AXIAL TURRETS
AXIAL REVOLVER**



Cod. MT	I	RPM max	Coppia Max Max Torque Max Drehmoment	Lubrificazione est. Ext. coolant Aussenkuehlung	D (mm)	D (Inch)	CHIAVI INCLUSE Keys included Schluessel inbegriffen			VDI
BAR0051100	1:1	4000	60Nm	X	16-22-27-32	3/4"-1"-1 1/4"	CHUB24	CHUB13	CHESL08	DESTRO - Right - Recht
BAR0052100	2:1	2000	80Nm	X	16-22-27-32	3/4"-1"-1 1/4"	CHUB24	CHUB13	CHESL08	DESTRO - Right - Recht

BARUFFALDI
VDI 50

MODULO MOTORIZZATO PORTACREATORE VDI50
Driven gear hobber VDI50
Angetriebenes Zahnradwaelzfraes-Werkzeug VDI50



M.T. srl
Via Casino Albini 480
Tel. 0541/956034-957884
Fax 0541/956341
47842 S. GIOVANNI IN M. (RN)
e-mail: mtma@mtmarchetti.com
http://www.mtmarchetti.com

PRODUZIONE MODULI ROTANTI



PAGINA BAR340-3-00

Subject to change without notice.

10/2018

