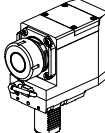

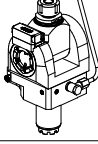
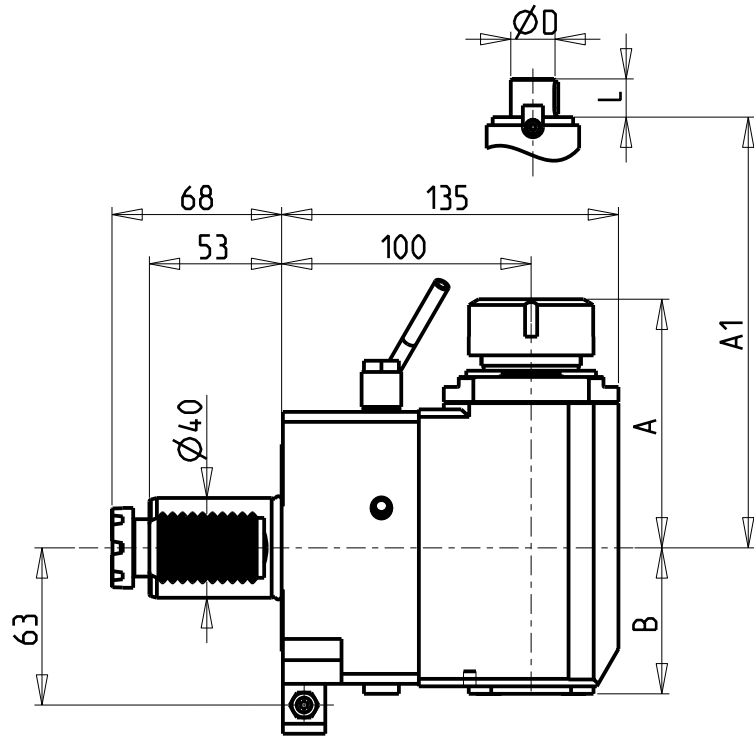
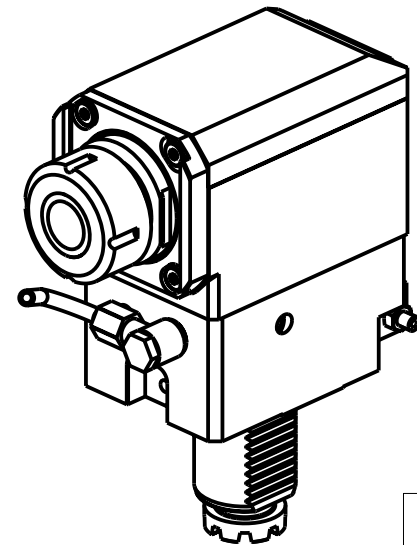
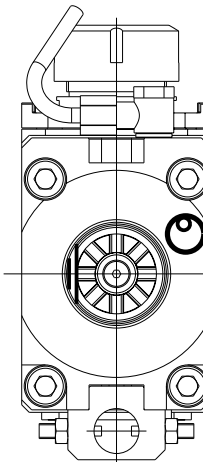
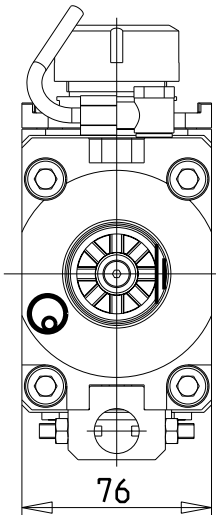


		PAGINA Page Seite
MODULO MOTORIZZATO RADIALE VDI40 H=100mm Radial driven tool VDI40 H=100mm Radial angetriebenes Werkzeug VDI40 H=100mm		BAR012.2.10
MODULO MOTORIZZATO RADIALE ARRETRATO VDI40 H=85mm Radial rear-set driven tool VDI40 H=85mm Radial angetriebenes Werkzeug zurueckversetzt VDI40 H=85mm		BAR013.2.00
MODULO MOTORIZZATO RADIALE ARRETRATO RIDOTTO I=2:1 VDI40 H=85mm Radial geared-down I=2:1 rear-set driven tool VDI40 H=85mm Radial angetriebenes Werkzeug zurueckversetzt untersetzt I=2:1 VDI40 H=85mm		BAR018.2.71
MODULO MOTORIZZATO ASSIALE VDI40 Axial driven tool VDI40 Axial angetriebenes Werkzeug VDI40		BAR150.2.10
MODULO MOTORIZZATO ASSIALE MTSK VDI40 Axial MTSK driven tool VDI40 Axial MTSK angetriebenes Werkzeug VDI40		BAR150.2.10.K 
MODULO MOTORIZZATO ASSIALE DISASSATO 42mm VDI40 Axial driven tool re-directed by 42mm VDI40 Axial angetriebenes Werkzeug achsversetzt um 42mm VDI40		BAR160.2.00
MODULO MOTORIZZATO ASSIALE RIDOTTO I=2:1 DISASSATO 42mm VDI40 Axial geared-down I=2:1 driven tool re-directed by 42mm VDI40 Axial angetriebenes Werkzeug untersetzt I=2:1 achsversetzt um 42mm VDI40		BAR160.2.10
MODULO MOTORIZZ. ASSIALE MOLTIPLICATO I=1:2 DISASSATO 42mm VDI40 Axial geared-up I=1:2 driven tool re-directed by 42mm VDI40 Axial angetriebenes Werkzeug uebersetzt I=1:2 achsversetzt um 42mm VDI40		BAR160.2.20
MODULO MOTORIZZATO ORIENTABILE ±90° VDI40 ±90° adjustable angle driven tool VDI40 Angetriebenes Werkzeug schwenkbar ±90° VDI40		BAR333.2.00
MODULO MOTORIZZATO ORIENTABILE ±90° CON NONIO DIGITALE VDI40 ±90° adjustable angle driven tool with digital display VDI40 Angetriebenes Werkzeug schwenkbar ±90° mit digital display VDI40		BAR333.2.01
MODULO MOTORIZZATO STOZZATORE CORSA 50mm VDI40 Slotting driven tool 50mm stroke VDI40 Keilnutenstossmaschine 50mm Hub VDI40		BAR360.2.30
MODULO MOTORIZZATO STOZZATORE CORSA 25mm VDI40 Slotting driven tool 25mm stroke VDI40 Keilnutenstossmaschine 25mm Hub VDI40		BAR360.2.31



versione dx
right version
version rechts

versione sx
left version
version links



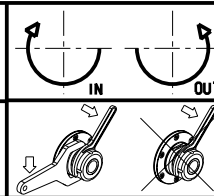
- Chiave inclusa
- Key included
- Schlüssel inbegriffen

Cod. MT		Mandrino Spindle Spindel	I	RPM	Coppia Max Max Torque Max Drehmoment	Lubrificazione int. Coolant through Innenkuehlung	Lubrificazione est. Ext. coolant Aussenkuehlung	A	A1	B	D	L	CHIAVI NON INCLUDE Keys not included Schlüssel nicht einbegriffen	
versione dx right version version rechts	versione sx left version version links													
BAR0210132	BAR0211132	ER32	1:1	4000	70Nm	-	X	99.7	-	58.5	-	-	OKU0650004	CHSTER32
BAR0210232	BAR0211232	ER32	1:1	4000	70Nm	P=70bar	X	99.7	-	69.5	-	-	OKU0650004	CHSTER32
BAR0210140	BAR0211140	ER40	1:1	4000	70Nm	-	X	103.7	-	58.5	-	-	OKU0650004	CHSTER40
BAR0210240	BAR0211240	ER40	1:1	4000	70Nm	P=70bar	X	103.7	-	69.5	-	-	OKU0650004	CHSTER40
BAR0210522	BAR0211522	Ø22x19	1:1	4000	70Nm	-	X	-	78.5	58.5	22	19	CHUB41	CH_VTCROCE_M10
BAR0210527	BAR0211527	Ø27x21	1:1	4000	70Nm	-	X	-	78.5	58.5	27	21	CHUB41	CH_VTCROCE_M12

BARUFFALDI
VDI 40

MODULO MOTORIZZATO RADIALE VDI40 H=100mm
Radial driven tool VDI40 H=100mm
Radial angetriebenes Werkzeug VDI40 H=100mm

Subject to change without notice.



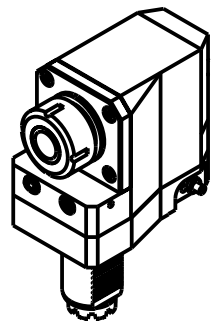
M.T. srl

Via Casino Albini 480
Tel. 0541/956034-957884
Fax 0541/956341
47842 S. GIOVANNI IN M. (RN)
e-mail: mtma@mtmarchetti.com
http://www.mtmarchetti.com

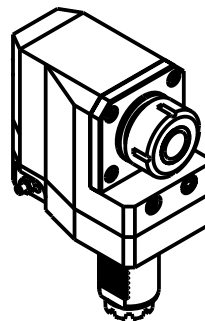
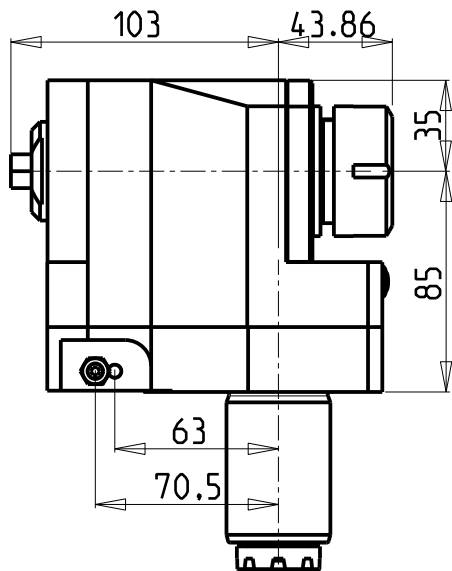
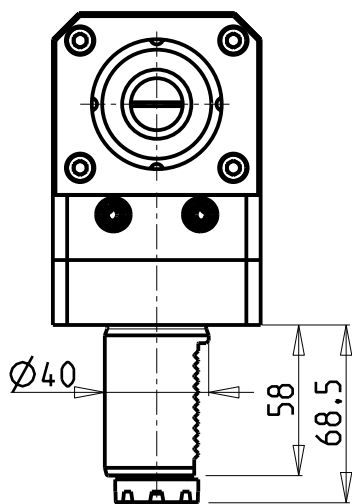
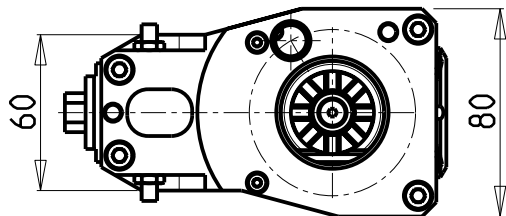
PRODUZIONE MODULI ROTANTI



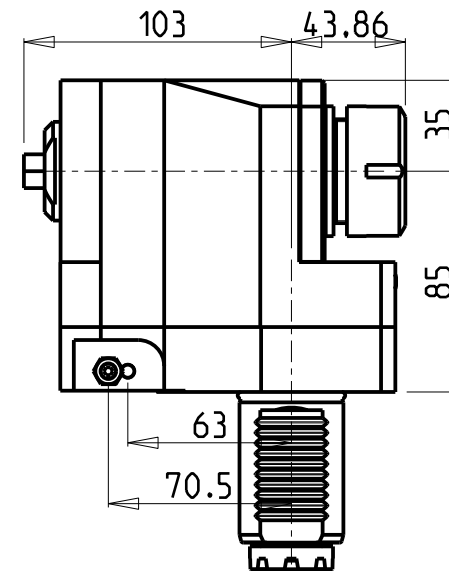
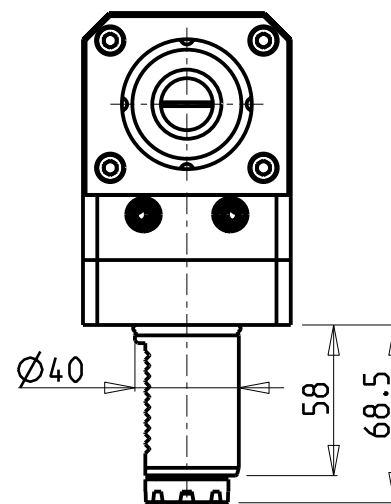
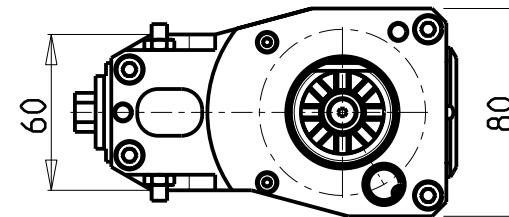
PAGINA BAR012-2-10



VDI DESTRO
VDI Right hand
VDI Recht



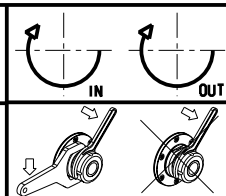
VDI SINISTRO
VDI Left hand
VDI Link



Cod. MT	Mandrino Spindle Spindel	i	RPM	Coppia Max Max Torque Max Drehmoment	Lubrificazione est. Ext. coolant Aussenkuehlung	CHIAVI NON INCLUSE Keys not included Schluessel nicht einbegriffen		VDI
						CHSTER32	CHUB13	
161BAR_R32_40C00	ER32	1:1	4000	70Nm	X	CHSTER32	CHUB13	DESTRO - Right - Recht
161BAR_R32_40C20	ER32	1:1	4000	70Nm	X	CHSTER32	CHUB13	SINISTRO - Left - Link

BARUFFALDI
VDI 40

MODULO MOTORIZZATO RADIALE ARRETRATO VDI40 H=85mm
Radial rear-set driven tool VDI40 H=85mm
Radial angetriebenes Werkzeug zurueckversetzt VDI40 H=85mm



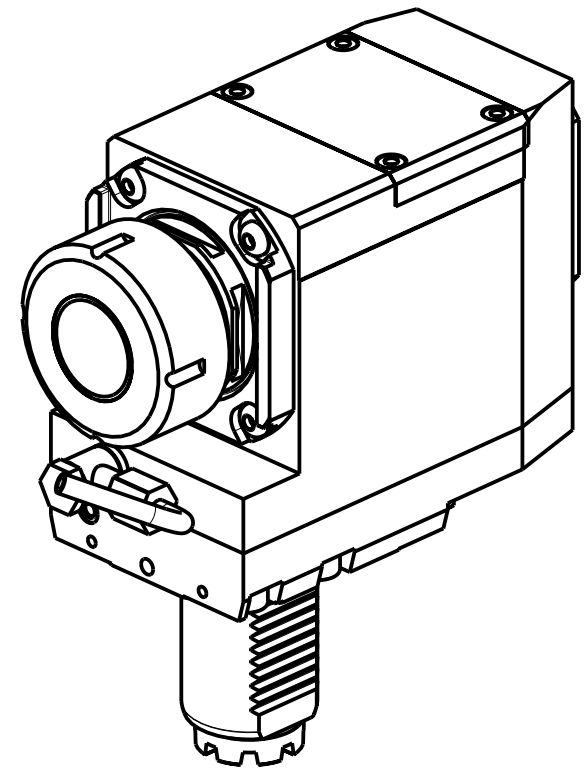
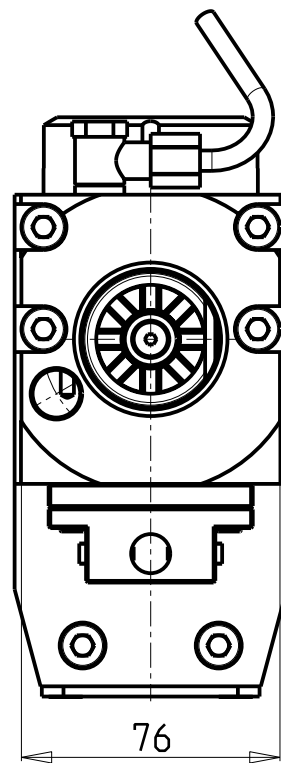
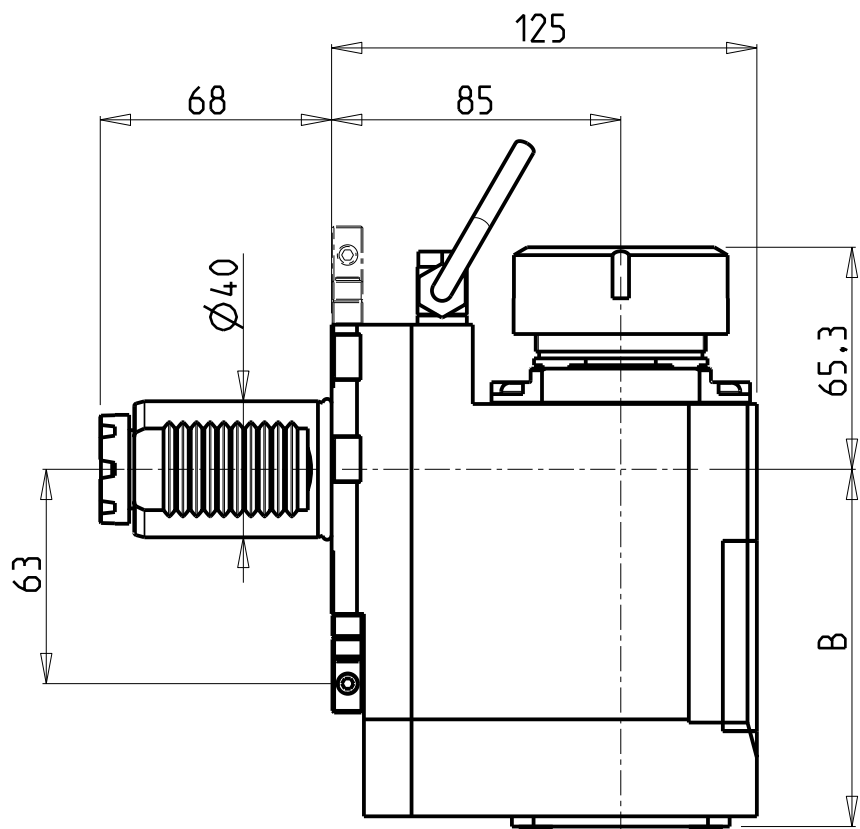
M.T. srl
Via Casino Albini 480
Tel. 0541/956034-957884
Fax 0541/956341
47842 S. GIOVANNI IN M. (RN)
e-mail: mtma@mtmarchetti.com
http://www.mtmarchetti.com

PRODUZIONE MODULI ROTANTI

PAGINA BAR013-2-00

Subject to change without notice.

10/2018



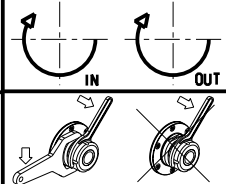
- Chiave inclusa
- Key included
- Schluessel inbegriffen

Cod. MT	Mandrino Spindle Spindel	I	RPM	Coppia Max Max Torque Max Drehmoment	Lubrificazione int. Coolant through Innenkuehlung	Lubrificazione est. Ext. coolant Aussenkuehlung	B	CHIAVI NON INCLUSE Keys not included Schluessel nicht einbegriffen	VDI
BAR0150140	ER40	2:1	2000	90Nm	-	X	105	CHSTER40 OKU0650004 •	DESTRO - Right - Recht
BAR0150240	ER40	2:1	2000	90Nm	P=70bar	X	117.5	CHSTER40 OKU0650004 •	DESTRO - Right - Recht

BARUFFALDI
VDI 40

MODULO MOTORIZZATO RADIALE ARRETRATO RIDOTTO I=2:1 VDI40 H=85
Radial geared-down I=2:1 rear-set driven tool VDI40 H=85
Radial angetriebenes Werkzeug zurueckversetzt untersetzt I=2:1 VDI40 H=85

Subject to change without notice.

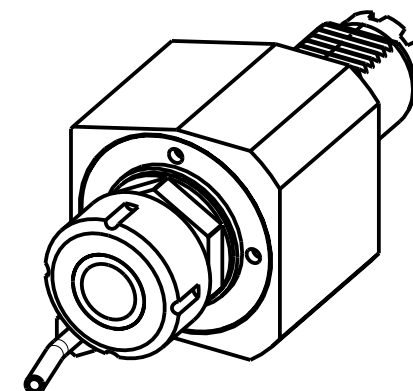
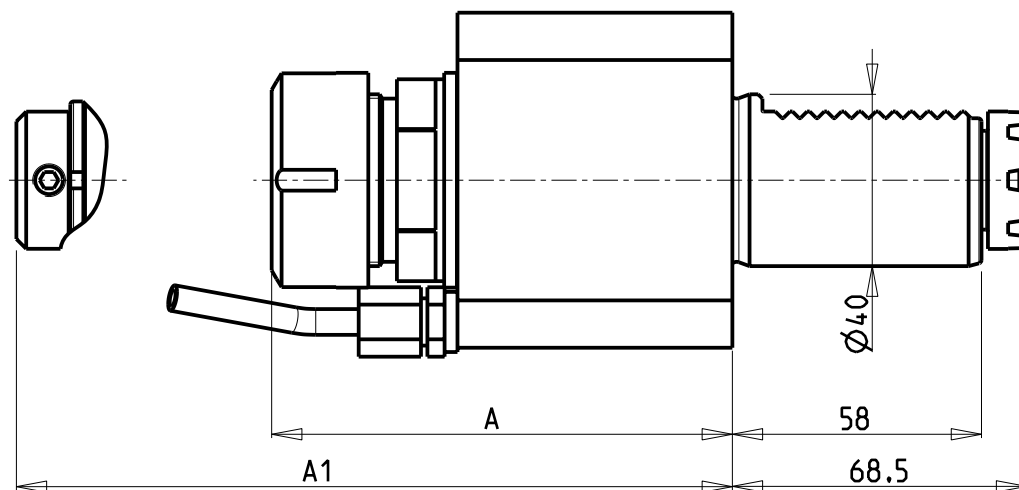
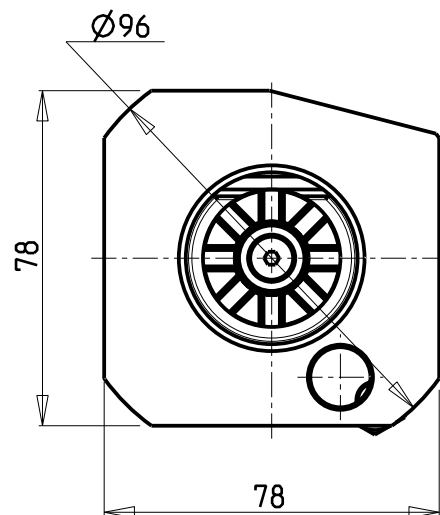


M.T. srl
Via Casino Albini 480
Tel. 0541/956034-957884
Fax 0541/956341
47842 S. GIOVANNI IN M. (RN)
e-mail: mtma@mtmarchetti.com
http://www.mtmarchetti.com

PRODUZIONE MODULI ROTANTI



PAGINA BAR018-2-71

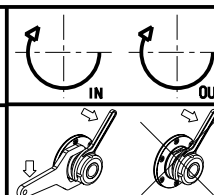


Cod. MT	Mandrino Spindle Spindel	I	RPM	Coppia Max Max Torque Max Drehmoment	Lubrificazione int. Coolant through Innenkuehlung	Lubrificazione est. Ext. coolant Aussenkuehlung	A	A1	CHIAVI NON INCLUSE Keys not included Schlüssel nicht einbegriffen	
162BAR_A32_40C00	ER32	1:1	4000	70Nm	-	X	107.3	-	CHSTER32	CHUB41
BAR0130232	ER32	1:1	4000	70Nm	P=30bar	X	110.5	-	CHSTER32	CHUB41
BAR0130420	WELDON 20	1:1	4000	70Nm	-	X	-	97.3	-	-

BARUFFALDI
VDI 40

MODULO MOTORIZZATO ASSIALE VDI40
Axial driven tool VDI40
Axial angetriebenes Werkzeug VDI40

Subject to change without notice.



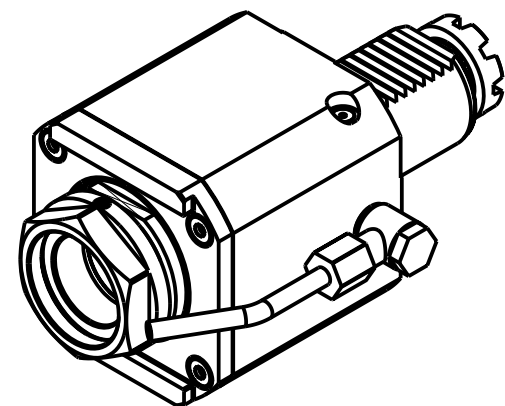
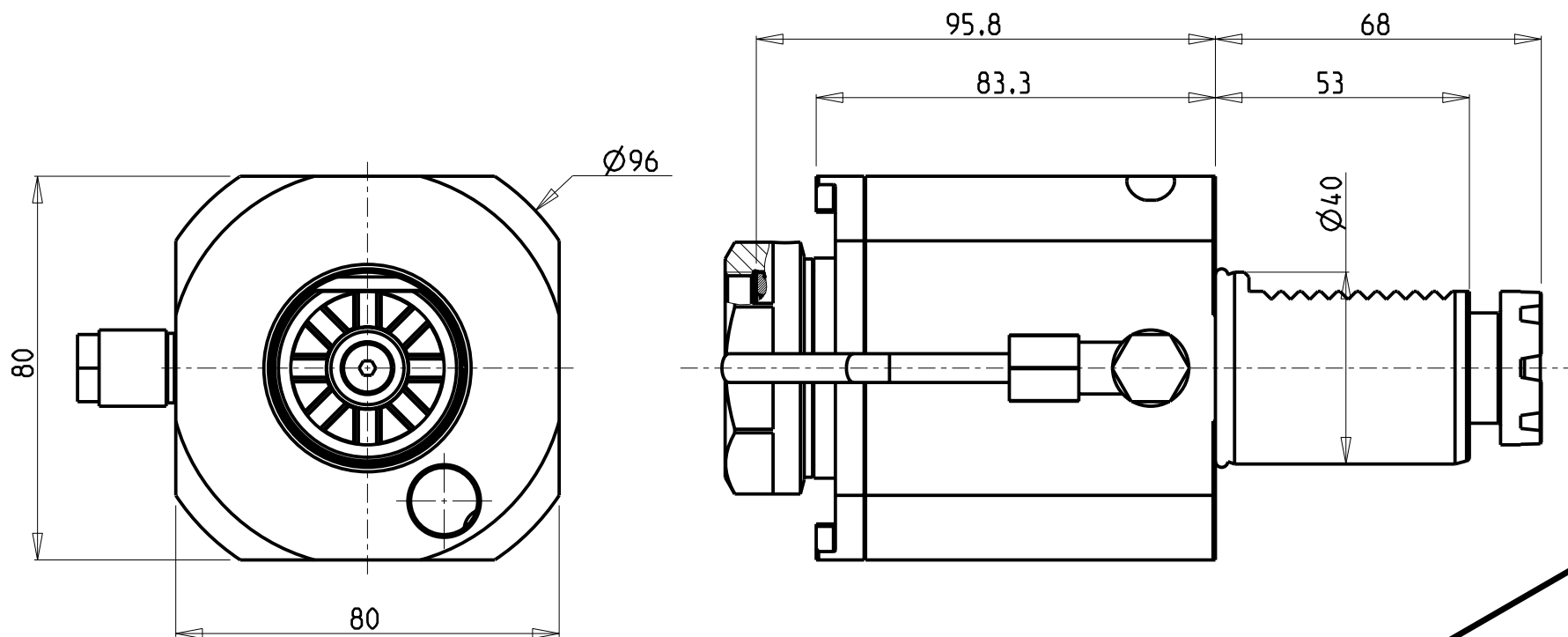
M.T. srl
Via Casino Albini 480
Tel. 0541/956034-957884
Fax 0541/956341
47842 S. GIOVANNI IN M. (RN)
e-mail: mtma@mtmarchetti.com
http://www.mtmarchetti.com

PRODUZIONE MODULI ROTANTI



PAGINA BAR150-2-10

10/2018



- Chiave inclusa
- Key included
- Schluessel inbegriffen

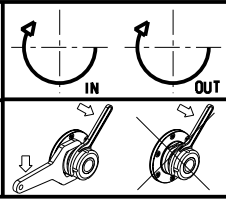
PER PORTAUTENSILI MODULARI MTSK-40 VEDI PAG. TBL300-1-40
 FOR MTSK-40 QUIK CHANGE TOOLHOLDERS CLAMPINGS SEE PAGE TBL300-1-40
 FUER MTSK-40 MODULARE WERKZEUGAUFNAHMEN SIEHE SEITE TBL300-1-40

Cod. MT	Mandrino Spindle Spindel	I	RPM	Coppia Max Max Torque Max Drehmoment	Lubrificazione est. Ext. coolant Ausseinkuehlung	CHIAVI NON INCLUSE Keys not included Schluessel nicht einbegriffen	
BAR0220140	MTSK-40	1:1	4000	70Nm	X	CHUB46	OKU0650004


NEW

BARUFFALDI
 VDI 40

MODULO MOTORIZZATO ASSIALE MTSK VDI40
 Axial MTSK driven tool VDI40
 Axial MTSK angetriebenes Werkzeug VDI40

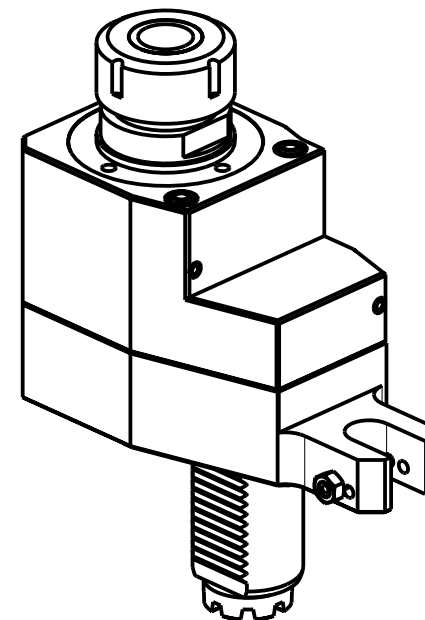
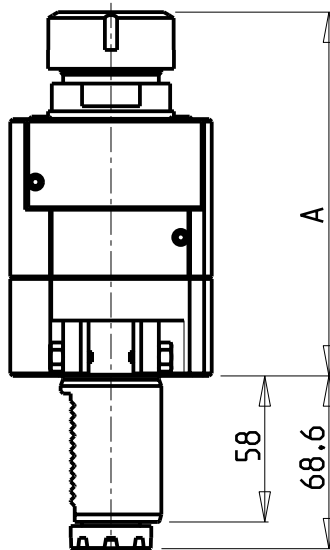
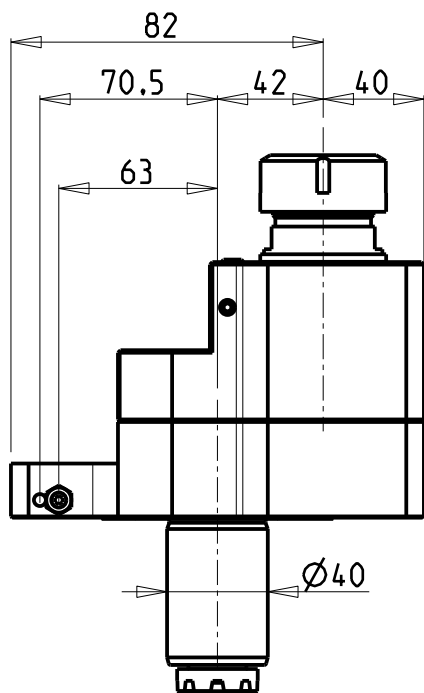
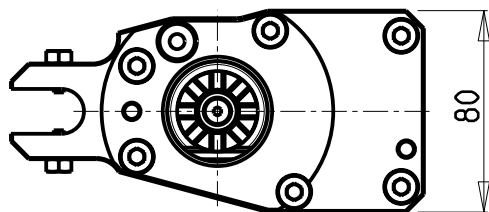


M.T. srl
 Via Casino Albini 480
 Tel. 0541/956034-957884
 Fax 0541/956341
 47842 S. GIOVANNI IN M. (RN)
 e-mail: mtma@mtmarchetti.com
 http://www.mtmarchetti.com

PRODUZIONE MODULI ROTANTI


PAGINA BAR150-2-10-K

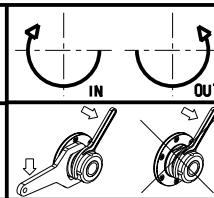
Subject to change without notice.



Cod. MT	Mandrino Spindle Spindel	I	RPM	Coppia Max Max Torque Max Drehmoment	Lubrificazione int. Coolant through Innenkuehlung	Lubrificazione est. Ext. coolant Aussenkuehlung	A	CHIAVI NON INCLUSE Keys not included Schlüssel nicht einbegriffen		VDI
								CHSTER32	CHUB41	
165BAR_A32_40C00	ER32	1:1	4000	70Nm		X	144.46	CHSTER32	CHUB41	DESTRO - Right - Recht
165BAR_A32_40C10	ER32	1:1	4000	70Nm	P=30bar		164.96	CHSTER32	CHUB38	DESTRO - Right - Recht

BARUFFALDI
VDI 40

MODULO MOTORIZZATO ASSIALE DISASSATO 42mm VDI40
Axial driven tool re-directed by 42mm VDI40
Axial angetriebenes Werkzeug achsversetzt um 42mm VDI40



M.T. srl
Via Casino Albini 480
Tel. 0541/956034-957884
Fax 0541/956341
47842 S. GIOVANNI IN M. (RN)
e-mail: mtma@mtmarchetti.com
http://www.mtmarchetti.com

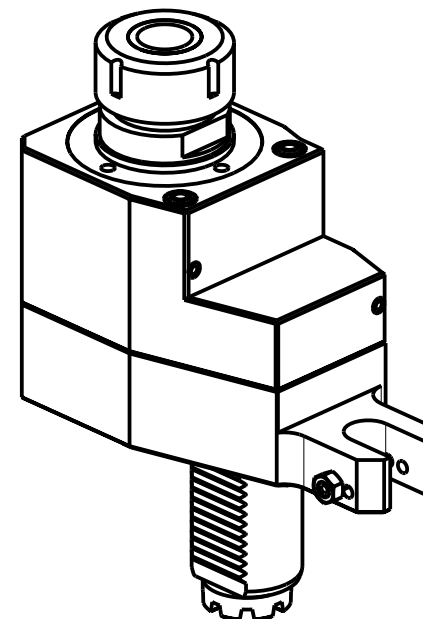
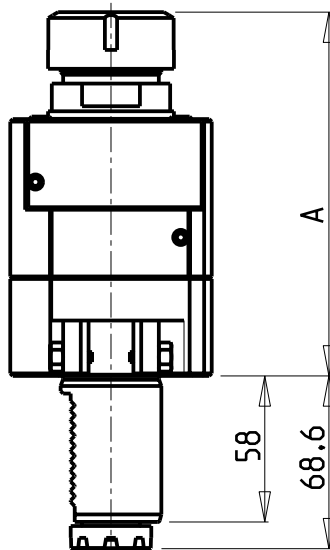
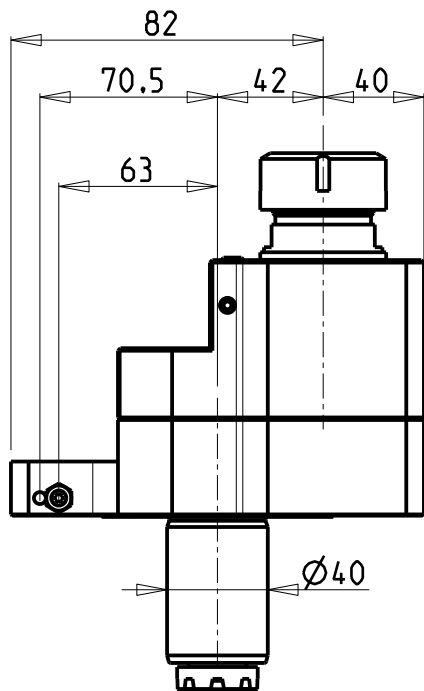
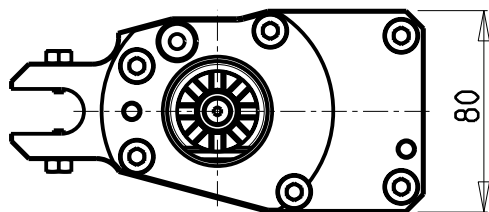
PRODUZIONE MODULI ROTANTI



PAGINA BAR160-2-00

Subject to change without notice.

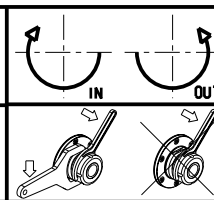
10/2018



Cod. MT	Mandrino Spindle Spindel	I	RPM	Coppia Max Max Torque Max Drehmoment	Lubrificazione int. Coolant through Innenkuehlung	Lubrificazione est. Ext. coolant Aussenkuehlung	A	CHIAVI NON INCLUSE Keys not included Schluessel nicht einbegriffen		VDI
165BAR_A32_40C 20	ER32	2:1	2000	100Nm		X	144.46	CHSTER32	CHUB41	DESTRO - Right - Recht
165BAR_A32_40C 30	ER32	2:1	2000	100Nm	P=30bar		164.96	CHSTER32	CHUB38	DESTRO - Right - Recht

BARUFFALDI
VDI 40

MODULO MOTORIZZATO ASSIALE RIDOTTO I=2:1 DISASSATO 42mm VDI40
Axial geared-down I=2:1 driven tool re-directed by 42mm VDI40
Axial angetriebenes Werkzeug untersetzt I=2:1 achsversetzt um 42mm VDI40



M.T. srl
Via Casino Albini 480
Tel. 0541/956034-957884
Fax 0541/956341
47842 S. GIOVANNI IN M. (RN)
e-mail: mtma@mtmarchetti.com
http://www.mtmarchetti.com

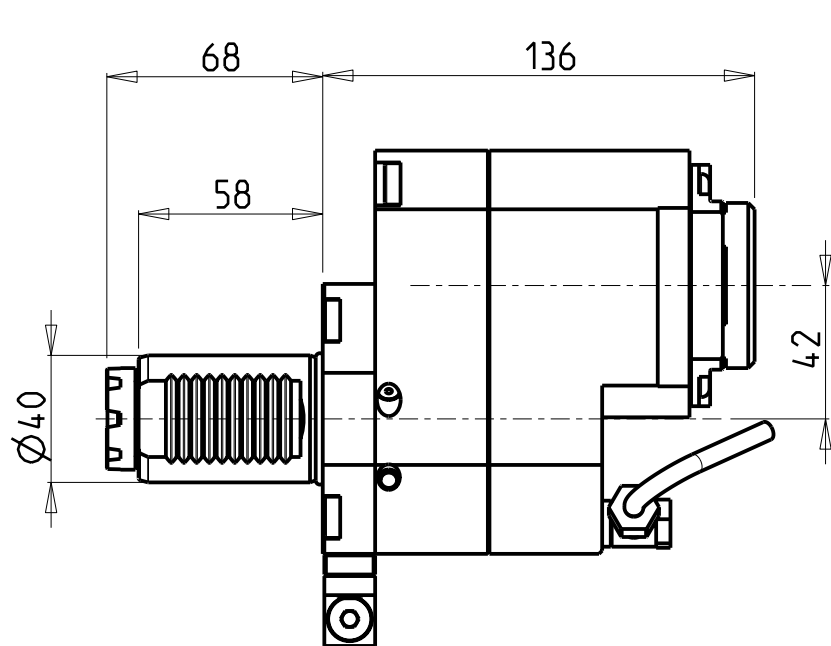
PRODUZIONE MODULI ROTANTI



PAGINA BAR160-2-10

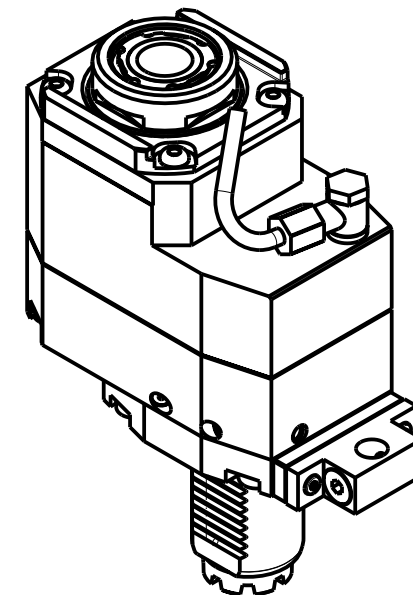
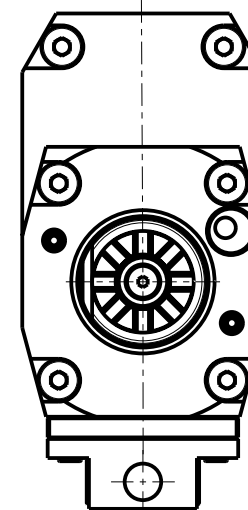
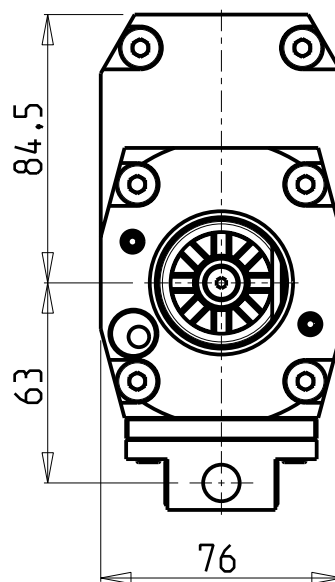
Subject to change without notice.

10/2018



versione dx
right version
version rechts

versione sx
left version
version links

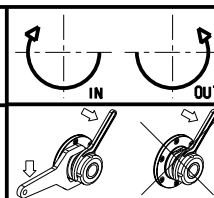


Cod. MT		Mandrino Spindle Spindel	i	RPM	Coppia Max Max Torque Max Drehmoment	Lubrificazione int. Coolant through Innenkuehlung	Lubrificazione est. Ext. coolant Aussenkuehlung	CHIAVI NON INCLUSE Keys not included Schlüssel nicht einbegriffen		
versione dx right version version rechts	versione sx left version version links							CHUB30	CHTAER32ZC *	OKU0650004 *
BAR0126132	BAR0127132	ERA32	1:2	8000	45Nm	-	X	CHUB30	CHTAER32ZC *	OKU0650004 *
BAR0126232	BAR0127232	ERA32	1:2	8000	45Nm	P=70bar	X	CHUB30	CHTAER32ZC *	OKU0650004 *

- Chiave inclusa
- Key included
- Schlüssel inbegriffen

BARUFFALDI
VDI 40

MODULO MOTORIZZATO ASSIALE MOLTIPLICATO I=1:2 DISASSATO 42mm VDI40
Axial geared-up I=1:2 driven tool re-directed by 42mm VDI40
Axial angetriebenes Werkzeug uebersetzt I=1:2 achsversetzt um 42mm VDI40



M.T. srl
Via Casino Albini 480
Tel. 0541/956034-957884
Fax 0541/956341
47842 S. GIOVANNI IN M. (RN)
e-mail: mtma@mtmarchetti.com
http://www.mtmarchetti.com

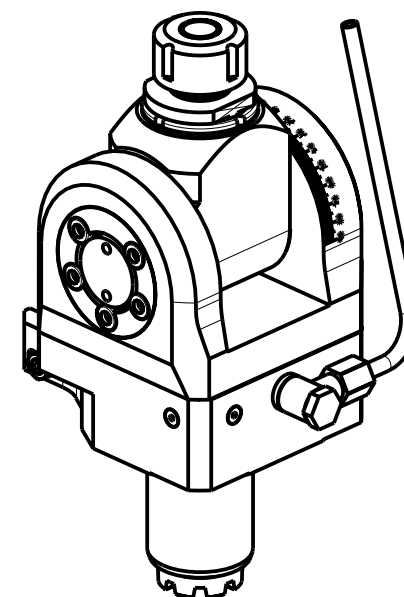
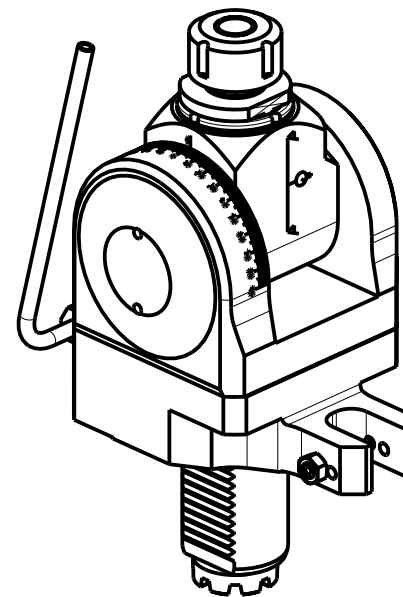
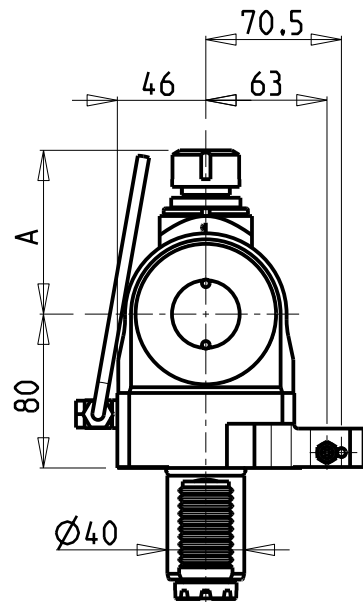
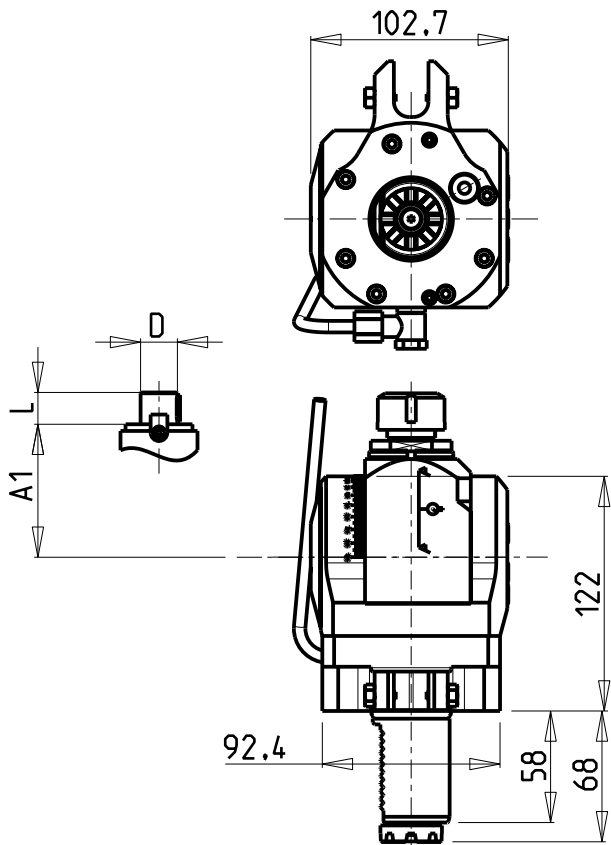
PRODUZIONE MODULI ROTANTI



PAGINA BAR160-2-20

Subject to change without notice.

10/2018

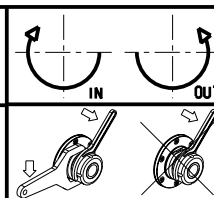


Cod. MT	Mandrino Spindle Spindel	I	RPM	Coppia Max Max Torque Max Drehmoment	Lubrificazione est. Ext. coolant Aussenkuehlung	A	A1	D	L	CHIAVI INCLUSE Schluessel inbegriffen Keys included	VDI	
BAR0200120	ER20	1:1	4000	40Nm	X	85.16	-	-	-	CHSTER20	C HUB36	DESTRO - Right - Recht
BAR0200125	ER25	1:1	4000	40Nm	X	86.16	-	-	-	CHSTER25	C HUB36	DESTRO - Right - Recht
BAR0200516	Ø16x17	1:1	4000	40Nm	X	-	65	16	17	CH_VTCROCE_M08	C HUB36	DESTRO - Right - Recht
BAR0200522	Ø22x19	1:1	4000	40Nm	X	-	66	22	19	CH_VTCROCE_M10	C HUB36	DESTRO - Right - Recht
BAR0200519	Ø3/4"x3/4"	1:1	4000	40Nm	X	-	65	3/4"	3/4"	CH_VTCROCE_M08	C HUB36	DESTRO - Right - Recht

BARUFFALDI
VDI 40

MODULO MOTORIZZATO ORIENTABILE ±90° VDI40
±90° adjustable angle driven tool VDI40
Angetriebenes Werkzeug schwenkbar ±90° VDI40

Subject to change without notice.



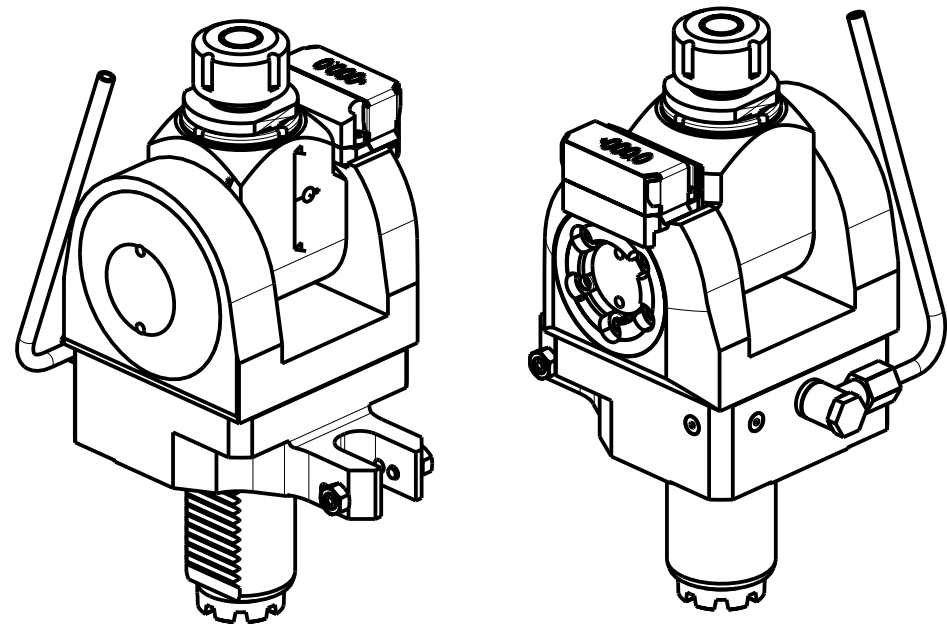
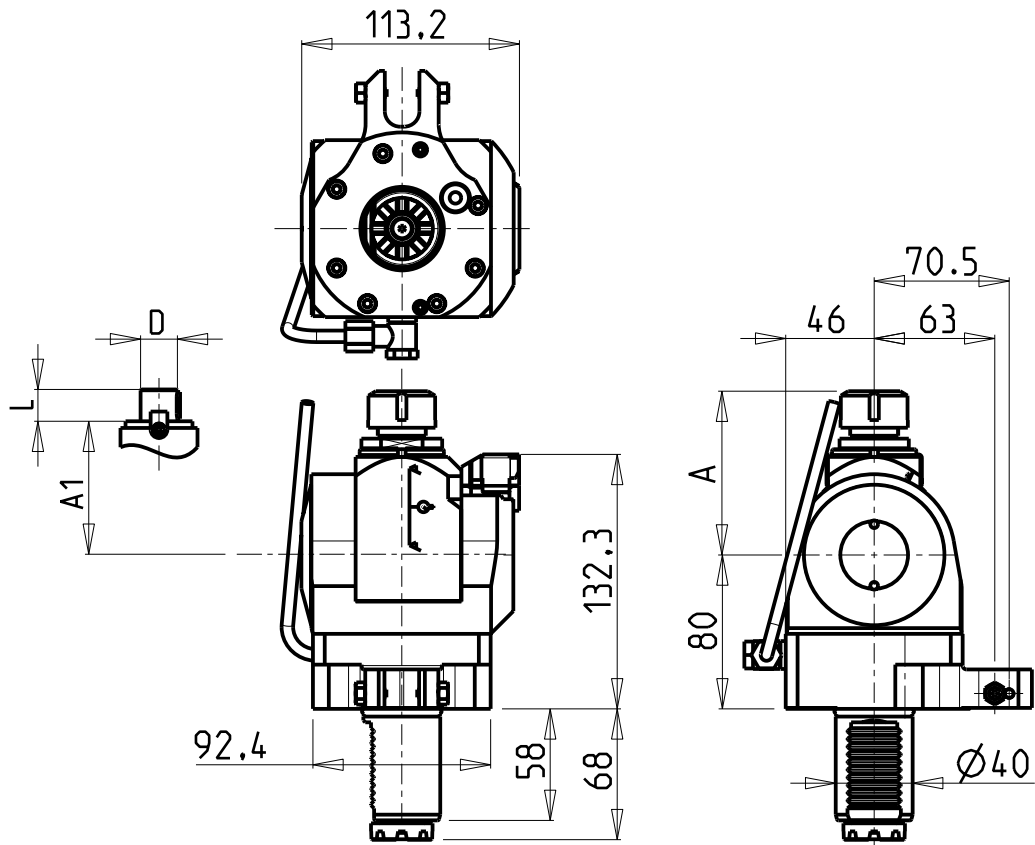
M.T. srl

Via Casino Albini 480
Tel. 0541/956034-957884
Fax 0541/956341
47842 S. GIOVANNI IN M. (RN)
e-mail: mtma@mtmarchetti.com
http://www.mtmarchetti.com

PRODUZIONE MODULI ROTANTI



PAGINA BAR333-2-00

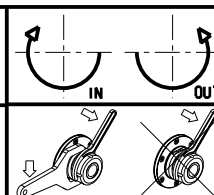


Cod. MT	Mandrino Spindle Spindel	I	RPM	Coppia Max Max Torque Max Drehmoment	Lubrificazione est. Ext. coolant Aussenkuehlung	A	A1	D	L	CHIAVI INCLUSE Schluessel inbegriffen Keys included	VDI
BAR0190120	ER20	1:1	4000	40Nm	X	85.16	-	-	-	CHSTER20 CHUB36	DESTRO - Right - Recht
BAR0190125	ER25	1:1	4000	40Nm	X	86.16	-	-	-	CHSTER25 CHUB36	DESTRO - Right - Recht
BAR0190516	Ø16x17	1:1	4000	40Nm	X	-	65	16	17	CH_VTCROCE_M08 CHUB36	DESTRO - Right - Recht
BAR0190522	Ø22x19	1:1	4000	40Nm	X	-	66	22	19	CH_VTCROCE_M10 CHUB36	DESTRO - Right - Recht
BAR0190519	Ø3/4"x3/4"	1:1	4000	40Nm	X	-	65	3/4"	3/4"	CH_VTCROCE_M08 CHUB36	DESTRO - Right - Recht

BARUFFALDI
VDI 40

MODULO MOTORIZZATO ORIENTABILE ±90° CON NONIO DIGITALE VDI40
±90° adjustable angle driven tool with digital display VDI40
Angetriebenes Werkzeug schwenkbar ±90° mit digital display VDI40

Subject to change without notice.



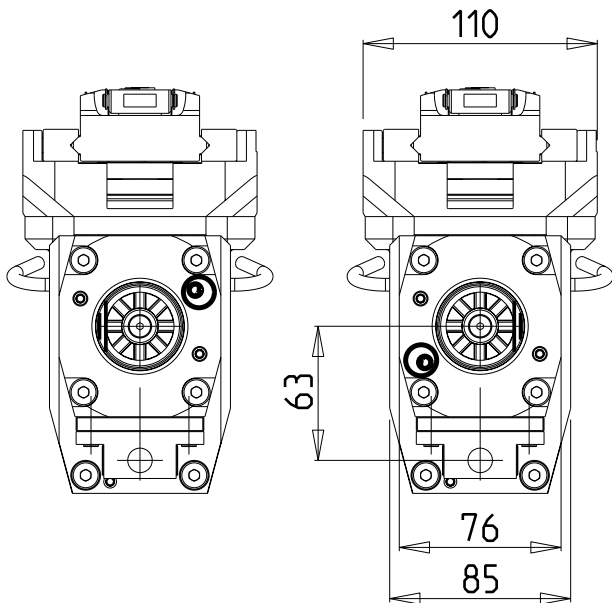
M.T. srl

Via Casino Albini 480
Tel. 0541/956034-957884
Fax 0541/956341
47842 S. GIOVANNI IN M. (RN)
e-mail: mtma@mtmarchetti.com
http://www.mtmarchetti.com

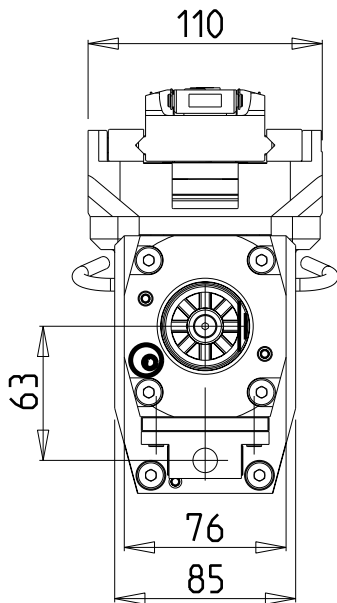
PRODUZIONE MODULI ROTANTI



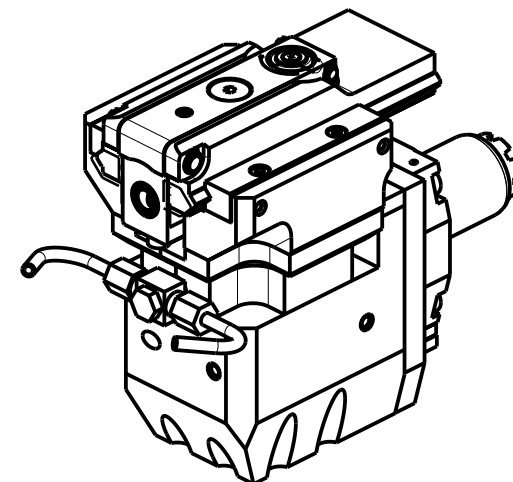
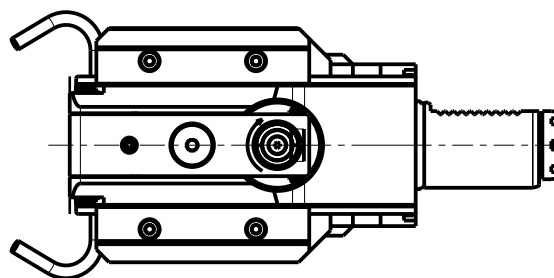
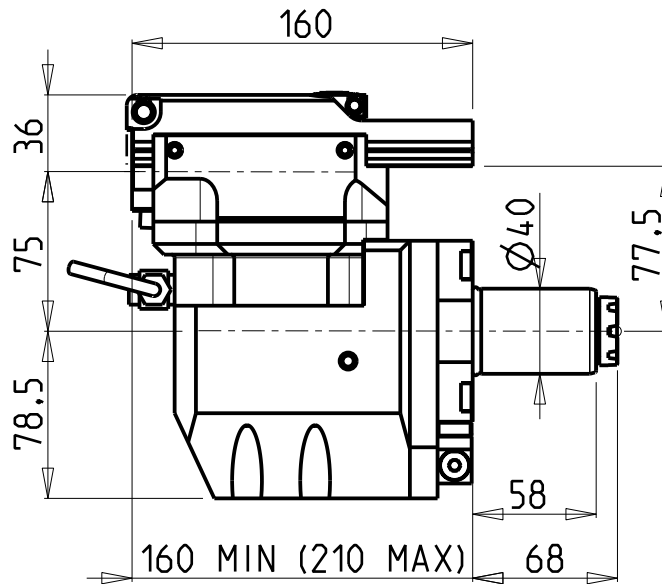
PAGINA BAR333-2-01



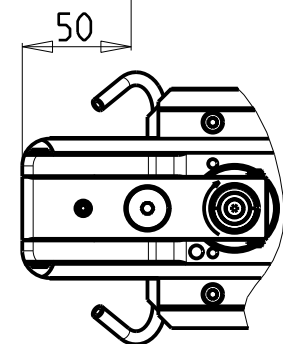
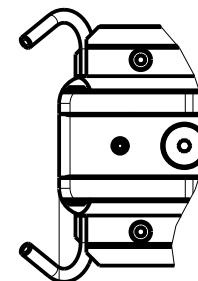
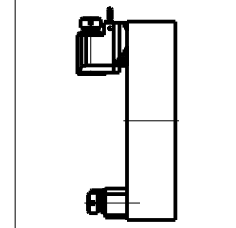
versione sx
left version
version links



versione dx
right version
version rechts



**TORRETTE ASSIALI
AXIAL TURRETS
AXIAL REVOLVER**



PER UTENSILI STOZZATORI VEDI PAG. TBL400-1-00
FOR DRIVEN SLOTTING TOOL CUTTING-TOOLS SEE PAGE TBL400-1-00
FÜR NUTENSTOSS-WERKZEUG SCHNEIDWERKZEUGE SIEHE SEITE TBL400-1-00

Cod. MT	I	RPM MAX	Lubr. esterna Ext. coolant Aussenkuehlung	VDI
BAR0180100	4:1	2000	X	DESTRO - Right - Recht
BAR0181100	4:1	2000	X	SINISTRO - Left - Link

BARUFFALDI
VDI 40

MODULO MOTORIZZATO STOZZATORE CORSA 50mm VDI40
Slotting driven tool 50mm stroke VDI40
Keilnutenstossmaschine 50mm Hub VDI40

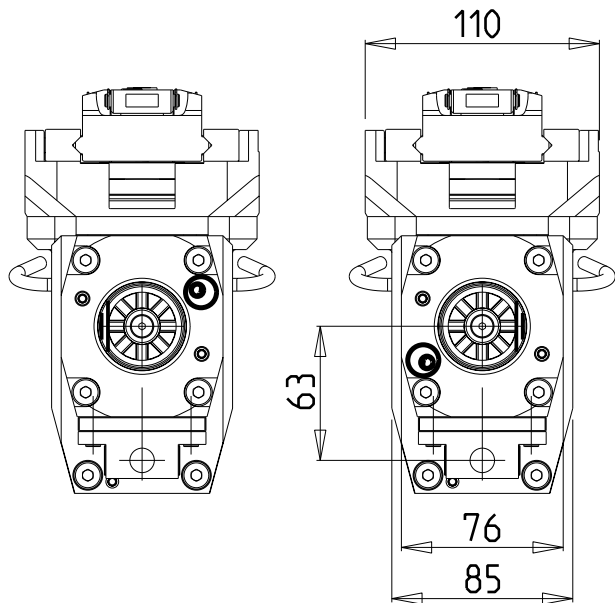
Subject to change without notice.

M.T. srl
Via Casino Albini 480
Tel. 0541/956034-957884
Fax 0541/956341
47842 S. GIOVANNI IN M. (RN)
e-mail: mtma@mtmarchetti.com
<http://www.mtmarchetti.com>

PRODUZIONE MODULI ROTANTI

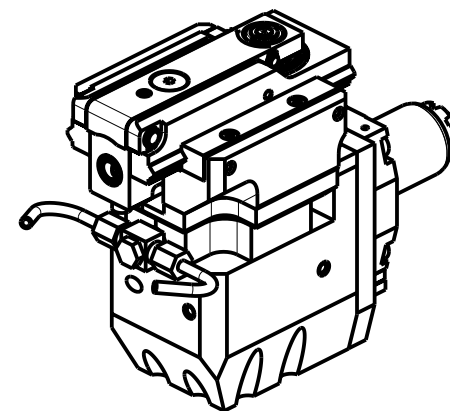
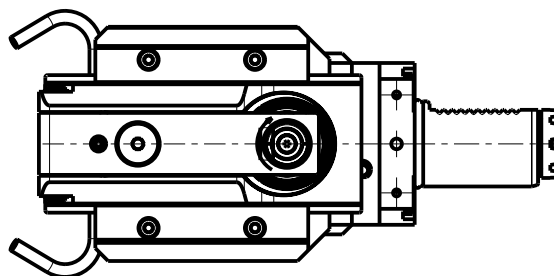
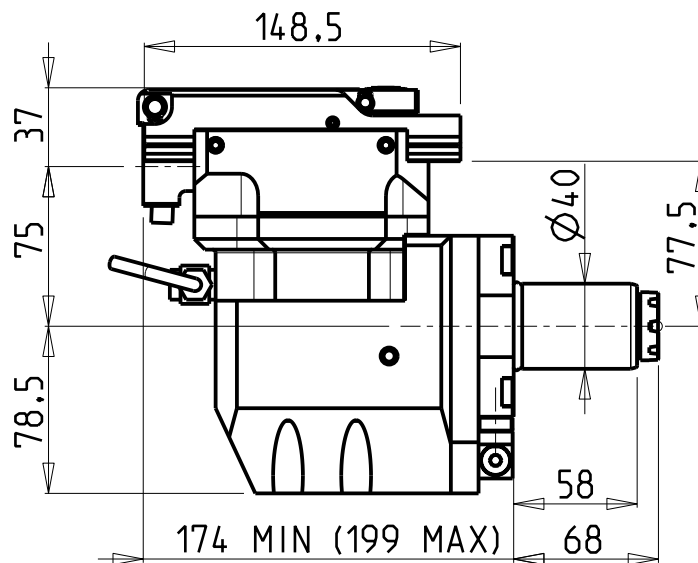


PAGINA BAR360-2-30

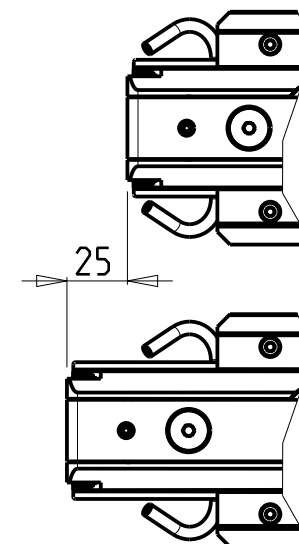
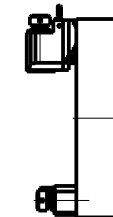


versione sx
left version
version links

versione dx
right version
version rechts



TORRETTE ASSIALI
AXIAL TURRETS
AXIAL REVOLVER



PER UTENSILI STOZZATORI VEDI PAG. TBL400-1-00
FOR DRIVEN SLOTTING TOOL CUTTING-TOOLS SEE PAGE TBL400-1-00
FÜR NUTENSTOSS-WERKZEUG SCHNEIDWERKZEUGE SIEHE SEITE TBL400-1-00

Cod. MT	I	RPM MAX	Lubr. esterna Ext. coolant Aussenkuehlung	VDI
BAR0180200	4:1	2400	X	DESTRO - Right - Recht
BAR0181200	4:1	2400	X	SINISTRO - Left - Link

BARUFFALDI
VDI 40

MODULO MOTORIZZATO STOZZATORE CORSA 25mm VDI40
Slotting driven tool 25mm stroke VDI40
Keilnutenstossmaschine 25mm Hub VDI40

Subject to change without notice.

M.T. srl

Via Casino Albini 480
Tel. 0541/956034-957884
Fax 0541/956341
47842 S. GIOVANNI IN M. (RN)
e-mail: mtma@mtmarchetti.com
http://www.mtmarchetti.com

PRODUZIONE MODULI ROTANTI



PAGINA BAR360-2-31